

# What's New

## Summary

**Link Forms/Business Processes to Files** – Team members can now reference (“link”) files and file versions in the Buzzsaw file hierarchy.

**Document Register** – We have addressed some customer usability requests and have made it easier to add new files and revisions to the Document Register.

**New Workflow Option for “RFI with Comments”** – We now list this form/business process separately and have added the “Gatekeeper” workflow option. In addition, there is now a workflow option for displaying the consultant comments in the final response.

**Miscellaneous Defects Fixed**

## Link Forms / Business Processes to Files

Buzzsaw Professional forms are used to track various business processes. In many cases, team members need to reference other documents, such as drawings or spreadsheets. Traditionally, Buzzsaw Professional has provided users with the ability to “attach” electronic documents to the form/business process. This new feature provides team members with the ability to reference (“link”) files and file versions in the Buzzsaw file hierarchy (in addition to existing “attachment” functionality). This feature was designed to improve review and approval business processes, and is available for all standard forms as well as forms created using the Buzzsaw Professional Form Designer feature.

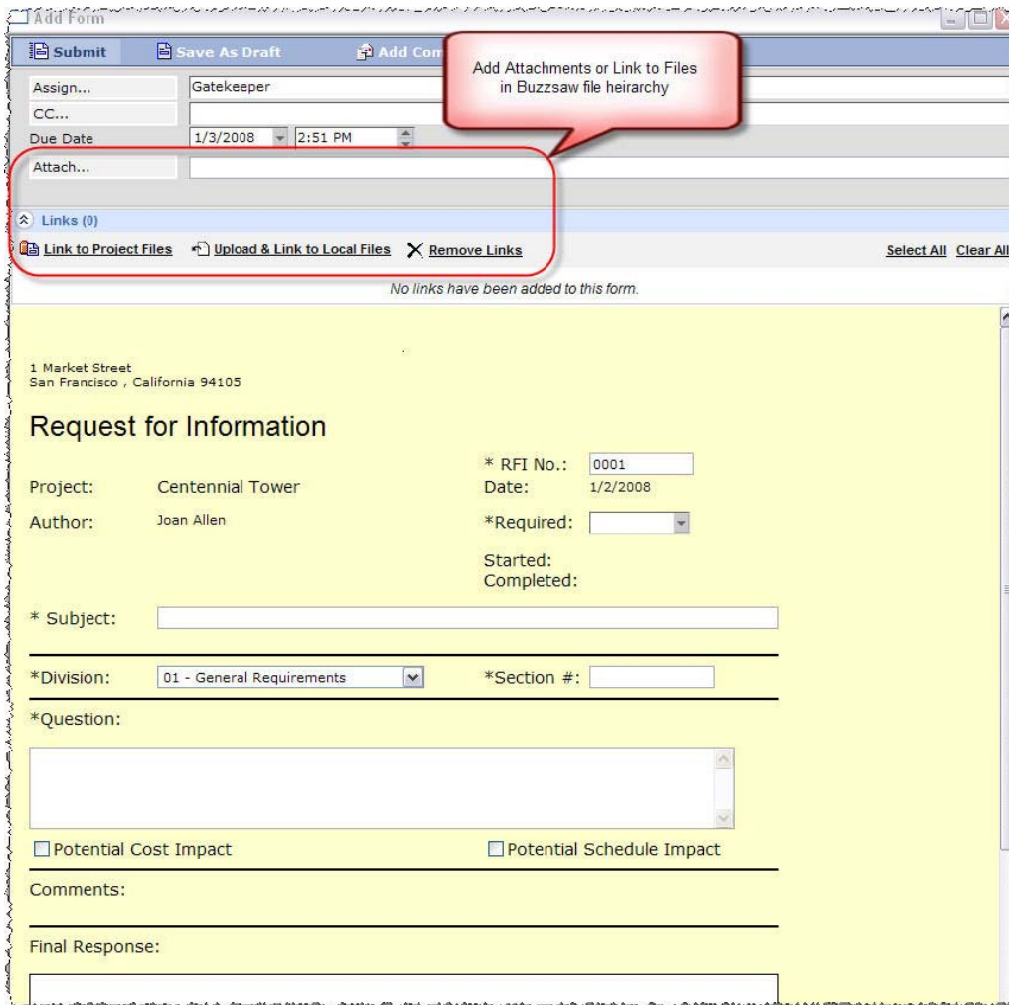


Figure 1: Linking to a File from a Form/Business Process

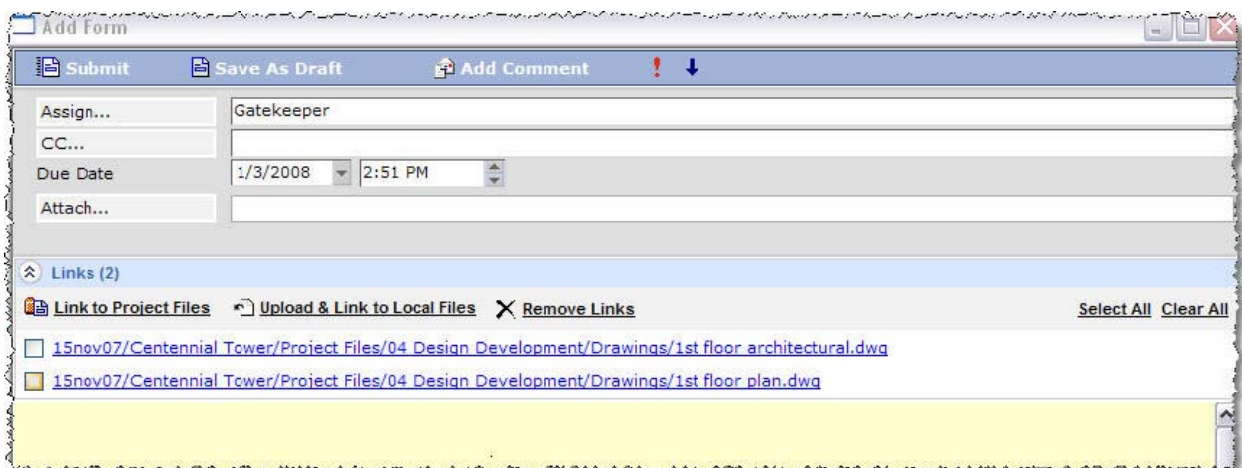


Figure 2: Display Links on Form



Figure 3: Cross-reference from the File Hierarchy

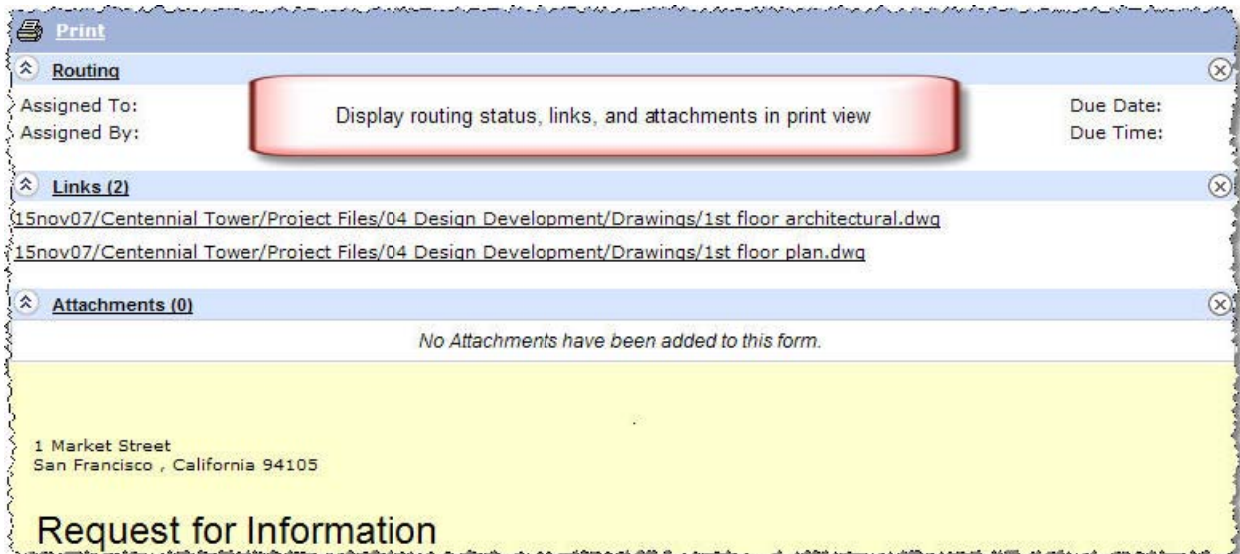
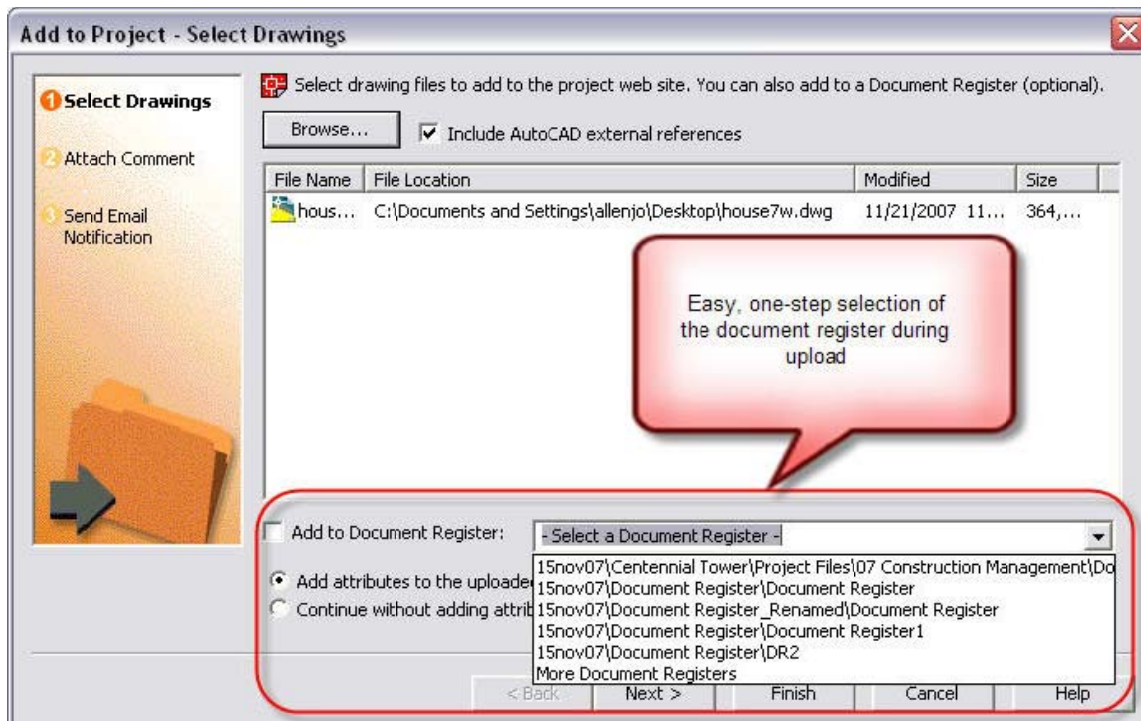


Figure 4: Display Routing Status, Links, and Attachments in Print View


## Document Register Enhancements

We have addressed some customer usability requests and have made it easier to add new files and revisions to the Document Register.

- Simplified the process of selecting a document register during file upload.
- When adding files from Buzzsaw to a document register, the browse button will default to the folder that contains the document register. After selecting a file, the browse button will default to the last folder where files were selected (the system will remember the previously selected folder for the remainder of the session)
- When revisions are being added to a document register, the system will pre-populate attributes with the values from the previous revision. The user may then edit the values.
- Enabled the ability to toggle the visibility of the file path in the upload wizard. By default visibility is on.
- Pagination / Sorting / Filtering settings remembered
- Better representation of missing files in the register along with information about the missing file, such as where the file was located on the site and when it was removed.
- Enabled the ability to suppress the hyphens added between revision prefix and suffix.



**Figure 5: Easier Selection of Document Register During Upload**

E101	<a href="#">Electrical Plan 1st Floor</a>	Electrical	X	1/2/2008	
	<a href="#">1st floor architectural</a>		 X	1/2/2008	

Now Showing 1 of 1

This file has been moved or deleted from Buzzsaw. Previous location: /15nov07/Centennial Tower/Project Files/05 Construction Documents/01 Drawings/1st floor architectural.dwg

**Figure 6: Clear Indication of Missing Documents**

### New Workflow Option for “RFI with Comments”

This form was previously available by selecting “RFI” with the “Gatekeeper with Distributor” workflow. With this release, we are listing this form/business process separately and have added the “Gatekeeper” workflow option.

RFI2 0001

Print

**Routing**

Assigned To: \_\_\_\_\_ Due Date: \_\_\_\_\_  
Assigned By: \_\_\_\_\_ Due Time: \_\_\_\_\_

**Links (2)**

[15nov07/Centennial Tower/Project Files/04 Design Development/Drawings/1st floor architectural.dwg](#)  
[15nov07/Centennial Tower/Project Files/04 Design Development/Drawings/1st floor plan.dwg](#)

**Attachments (0)**

No Attachments have been added to this form.

1 Market Street  
San Francisco, California 94105

### Request for Information

Project:	Centennial Tower	RFI No.:	0001
Author:	Joan Allen	Date:	1/2/2008
		Required:	1/4/2008
		Started:	
		Completed:	

Title: Lighting and Ceiling Plan, 1st Floor

---

Division #: 16 - Electrical      Section #: 16080

Question:

There is a discrepancy between the architectural plans and the lighting plans for the 1st floor. The Architectural plan shows 2x2 fixtures along the east wall, but the electrical plan shows 2x4 fixtures in this location. Please advise

Potential Cost Impact: Yes      Potential Schedule Impact: Yes

Comments:

Final Response:

The architectural drawings are correct (2x2 lighting). We will issue revised electrical drawings by Friday 4 January.

Responded By: Gatekeeper      Date: 1/2/2008

DRAWINGS:

Figure 7: RFI with Comments Form



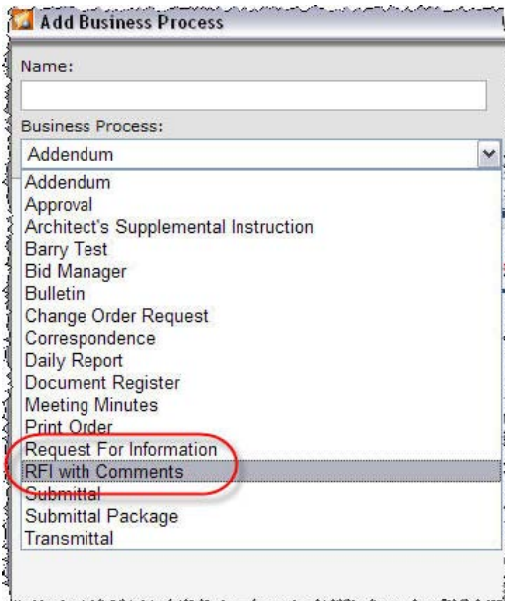


Figure 8: Choose Between Two RFI Types During Add Business Process Setup

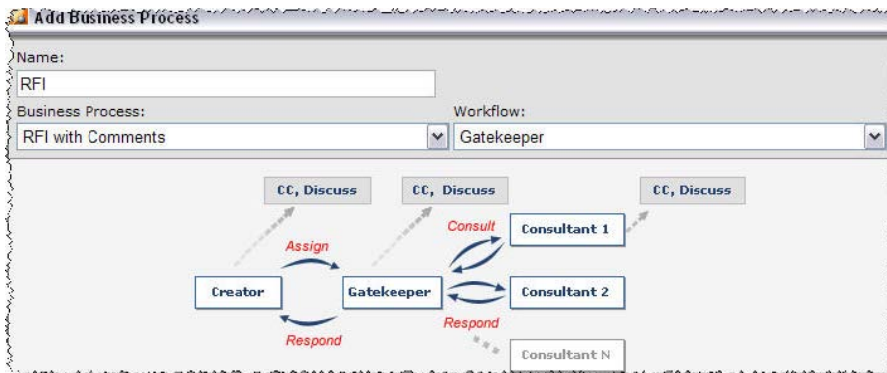


Figure 9: RFI with Comments, Gatekeeper Workflow Option

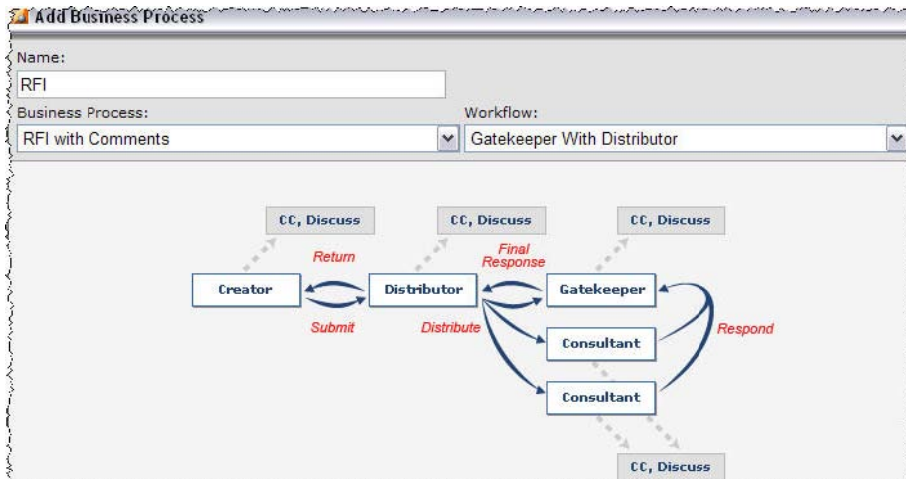


Figure 10: RFI with Comments, Gatekeeper with Distributor Workflow Option

We have also added a workflow option for displaying the consultant comments in the final response.

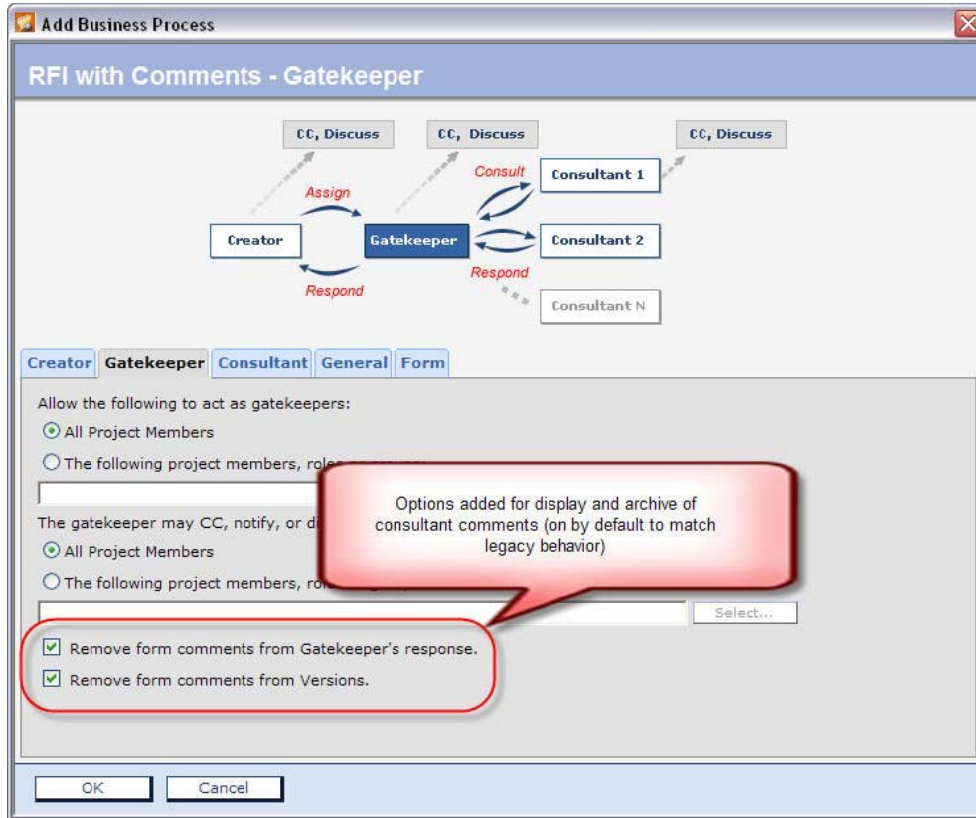


Figure 11: Workflow Options for “RFI with Comments”

## Notable Defects Fixed in 2008.1 (January 2008)

ID	DESCRIPTION
<a href="#">BZ-805</a>	Find: Make "Full Content Search" Checkbox "sticky"
<a href="#">BZ-540</a>	Errors when editing DWG files and including external references
<a href="#">BZ-488</a>	Problem with List Report for InfoPath created form
<a href="#">BZ-433</a>	Member Management: Disabled members (Site Admins) listed as Enabled member in Project Setup member tab
<a href="#">BZ-399</a>	Email notification of file upload in Web Access (thin client) fails if recipient has multiple email addresses
<a href="#">BZ-463</a>	Email notification in Web Access (thin client) fails for BCC users with multiple email addresses
<a href="#">BZ-394</a>	Selecting & adding multiple members to a participant set does not remove selected members from available list
<a href="#">BZ-149</a>	Buzzsaw users on one site are receiving duplicate workflow emails after 2007.4 release
<a href="#">BZ-148</a>	Error received when selecting Project Setup Menu under certain conditions
<a href="#">BZ-143</a>	BZ Thick Client crashes when adding Company under certain conditions
<a href="#">BZ-137</a>	Versions Tab refresh issue
<a href="#">BZ-135</a>	Reset password email is sent to the old email address
<a href="#">BZ-132</a>	Projects nested under folders not listed on the Limits Tab
<a href="#">BZ-130</a>	Newly Created site only - In DR upload wizard's Edit Attribute dialog, the attribute values are not maintained when editing second time
<a href="#">BZ-128</a>	Buzzsaw->Tools->Notification Manager: While editing a Notification type assigned to an existing Project/File/Folder/Formlog, the Edit dialogue box remains even after clicking OK button.
<a href="#">BZ-127</a>	Fix to better handle submitting forms that are in error state
<a href="#">BZ-126</a>	Site Admin has new project displayed Version Limit of 0
<a href="#">BZ-123</a>	Thick Client Menu toolbar   "Form" option in "File" menu toolbar not available even on selection of Form Log.
<a href="#">BZ-122</a>	Project Administration: Companies: Invalid date in Last Updated column.
<a href="#">BZ-120</a>	Editing a DWG with no working folder set causes error with design review
<a href="#">BZ-118</a>	Crash when you send email from BZ Group Properties page
<a href="#">BZ-117</a>	Deposit permissions allow other user to see folders posted
<a href="#">BZ-116</a>	View All Site Members Check Box issue in new member properties window
<a href="#">BZ-115</a>	Buzzsaw UI not displaying project level groups
<a href="#">BZ-114</a>	Upload wizard maximizes and minimizes incorrectly
<a href="#">BZ-113</a>	Cloning a Project with project level groups appears to delete all the groups
<a href="#">BZ-98</a>	Data is not showing up in certain forms in a custom form log
<a href="#">BZ-38</a>	"&" symbol in path to file prevent links from taking user directly to the file.
<a href="#">BZ-13</a>	When using drag and drop feature, all folders explode within folder hierarchy.
<a href="#">BZ-609</a>	Add South African Rand to available currencies on Buzzsaw
<a href="#">BZ-408</a>	Help File: Cosmetic inconsistency with "Using Properties" pages
<a href="#">BZ-407</a>	Help File: Instructions for renaming a project in Project Administration - General Tab is incorrect
<a href="#">BZ-138</a>	Help File - Missing Icons in numerous places in the Buzzsaw Web Access help section and System Requirements page doesn't load properly.