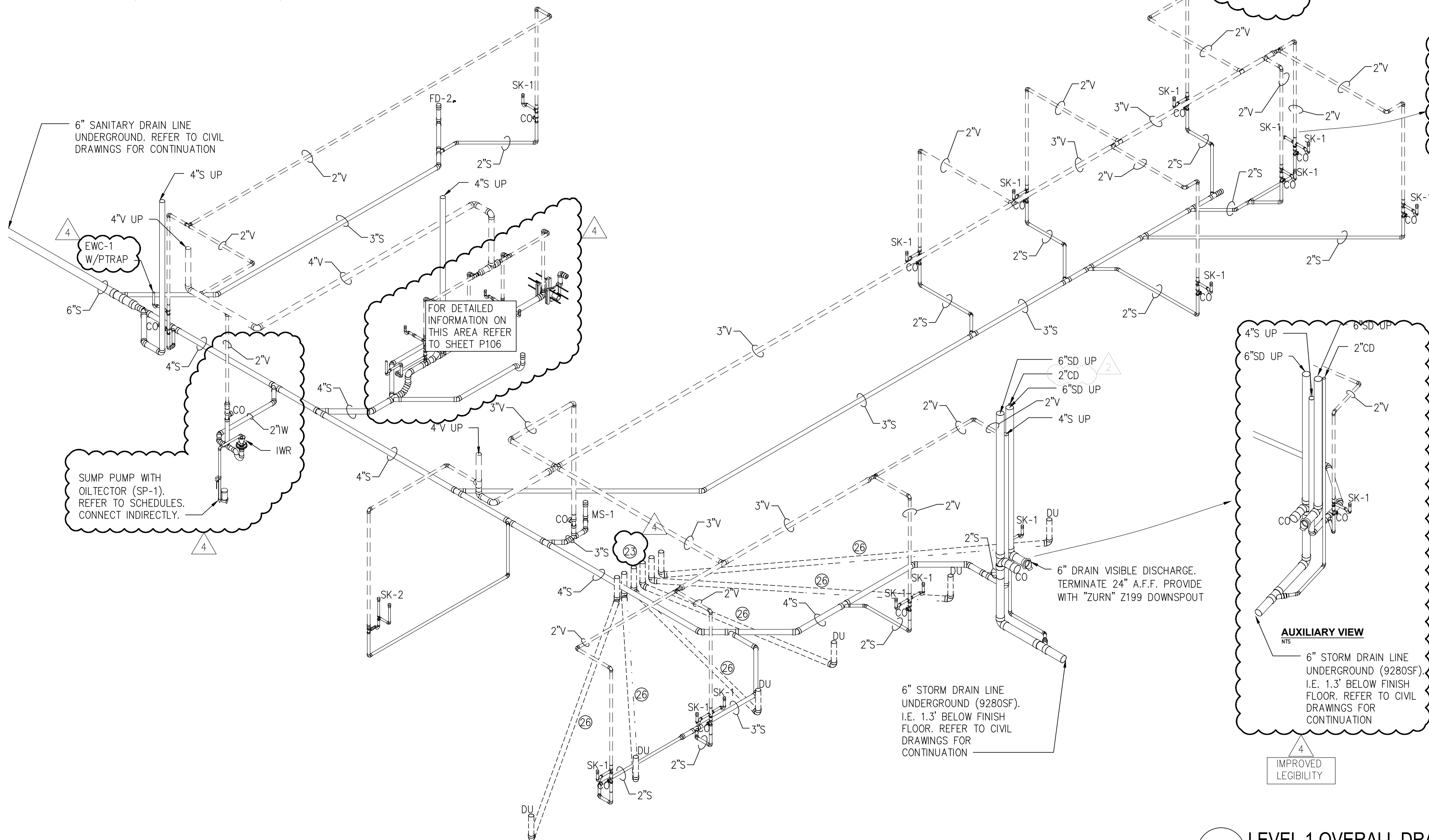
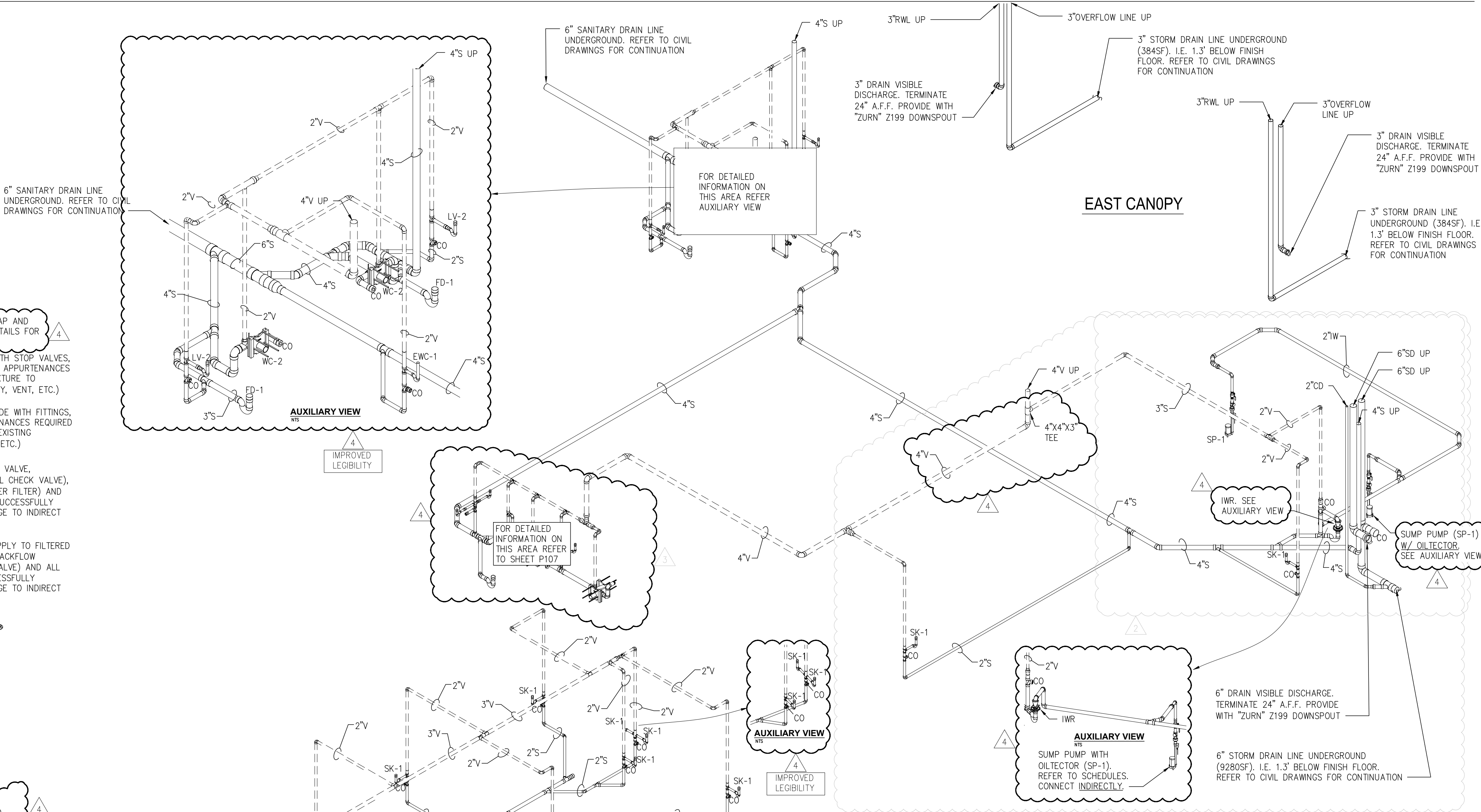


- ① NEW ELECTRIC WATER COOLER (EWC-1). PROVIDE WITH P-TRAPS, STOP VALVES, FILTER, FITTINGS, SUPPORT AND ALL RELATED APPURTENANCES REQUIRED TO SUCCESSFULLY CONNECT NEW FIXTURE TO PLUMBING SERVICES (WATER, SANITARY, VENT, ETC.)
- ② NEW WATER CLOSET (WC-1). CONTRACTOR TO PROVIDE STOP VALVE/FLUSH VALVE, FITTINGS, SUPPORT AND ALL RELATED APPURTENANCES REQUIRED TO SUCCESSFULLY CONNECT NEW FIXTURE TO PLUMBING SERVICES (WATER, SANITARY, VENT, ETC.)
- ③ NEW ADA COMPLIANT WATER CLOSET (WC-2). CONTRACTOR TO PROVIDE STOP VALVE, FITTINGS, SUPPORT AND ALL RELATED APPURTENANCES REQUIRED TO SUCCESSFULLY CONNECT NEW FIXTURE TO PLUMBING SERVICES (WATER, SANITARY, VENT, ETC.)
- ④ NEW URINAL (UR-1). CONTRACTOR TO PROVIDE FITTINGS, FLUSH VALVE, SUPPORT AND ALL RELATED APPURTENANCES REQUIRED TO SUCCESSFULLY CONNECT NEW FIXTURE TO PLUMBING SERVICES (WATER, SANITARY, VENT, ETC.)
- ⑤ NEW COUNTER LAVATORY (LV-1). CONTRACTOR TO PROVIDE STOP VALVES, FITTINGS, FAUCET, SUPPORT AND ALL RELATED APPURTENANCES REQUIRED TO SUCCESSFULLY CONNECT NEW FIXTURE TO PLUMBING SERVICES (WATER, SANITARY, VENT, ETC.)
- ⑥ NEW A.D.A. LAVATORY (LV-2). CONTRACTOR TO PROVIDE STOP VALVES, FITTINGS, FAUCET, SUPPORT AND ALL RELATED APPURTENANCES REQUIRED TO SUCCESSFULLY CONNECT NEW FIXTURE TO PLUMBING SERVICES (WATER, SANITARY, VENT, ETC.)
- ⑦ NEW FLOOR DRAIN (FD-1). PROVIDE WITH P-TRAP AND RESEAL FROM NEAREST FIXTURE. REFER TO DETAILS FOR FURTHER INFORMATION
- ⑧ NEW SINK (SK-1). CONTRACTOR TO PROVIDE WITH STOP VALVES, FITTINGS, FAUCET, SUPPORT AND ALL RELATED APPURTENANCES REQUIRED TO SUCCESSFULLY CONNECT NEW FIXTURE TO EXISTING PLUMBING SERVICES (WATER, SANITARY, VENT, ETC.)
- ⑨ NEW MOP SINK (MS-1). CONTRACTOR TO PROVIDE WITH FITTINGS, FAUCET, SUPPORT AND ALL RELATED APPURTENANCES REQUIRED TO SUCCESSFULLY CONNECT NEW FIXTURE TO EXISTING PLUMBING SERVICES (WATER, SANITARY, VENT, ETC.)
- ⑩ NEW COFFEE MAKER (CM). PROVIDE WITH STOP VALVE, BACKFLOW PREVENTER ("WATTS" SERIES 7 DUAL CHECK VALVE), FILTER ("WATTS" PREMIER-5 YEAR IN-LINE WATER FILTER) AND ALL RELATED APPURTENANCES REQUIRED TO SUCCESSFULLY CONNECT TO WATER SUPPLY. PROVIDE DRAINAGE TO INDIRECT WASTE RECEPTACLE (2" MIN OF AIR GAP)
- ⑪ NEW REFRIGERATOR (RF). CONNECT WATER SUPPLY TO FILTERED WATER SERVICE. PROVIDE WITH STOP VALVE, BACKFLOW PREVENTER ("WATTS" SERIES 7 DUAL CHECK VALVE) AND ALL RELATED APPURTENANCES REQUIRED TO SUCCESSFULLY CONNECT TO WATER SUPPLY. PROVIDE DRAINAGE TO INDIRECT WASTE RECEPTACLE (2" MIN OF AIR GAP)



# 1 LEVEL 1 OVERALL DRAIN/VENT ISOMETRIC DIAGRAM - PLUMBING

- ⑫ ELECTRIC WATER HEATER (EWH-1). CONTRACTOR TO PROVIDE WITH FITTINGS, SUPPORT AND ALL RELATED APPURTENANCES REQUIRED TO SUCCESSFULLY CONNECT TO COLD, HOT AND RECIRCULATING HOT WATER SYSTEMS. REFER TO DETAILS AND SCHEDULES FOR FURTHER INFORMATION
- ⑬ SUMP PUMP (SP-1). REFER TO SCHEDULE, DETAILS AND NOTE #28 FOR FURTHER INFORMATION
- ⑭ NEW ICE MAKER (IM). PROVIDE WITH STOP VALVE, BACKFLOW PREVENTER ("WATTS" SERIES 7 DUAL CHECK VALVE), FILTER ("WATTS" PREMIER-5 YEAR IN-LINE WATER FILTER) AND ALL RELATED APPURTENANCES REQUIRED TO SUCCESSFULLY CONNECT TO WATER SUPPLY. PROVIDE DRAINAGE TO INDIRECT WASTE RECEPTACLE (2" MIN OF AIR GAP). COORDINATE CLOSELY WITH FURNITURE PRIOR TO INSTALLATION
- ⑮ DRAIN/IWR (FD-2). PROVIDE WITH INDIRECT WASTE RECEPTOR TO RECEIVE INDIRECT WASTE FROM ICE MAKER (2" MIN. GAP). PROVIDE WITH P-TRAP AND 1/2" RESEAL LINE FROM TRAP PRIMER. CONTRACTOR TO FIELD-COORDINATE EXACT LOCATION
- ⑯ 1/2" COLD WATER SUPPLY LINE FOR LIEBERT UNIT HUMIDIFIER. PROVIDE WITH BACKFLOW PREVENTER ASSEMBLY, TYPICAL OF "WATTS" 0090T. FOR FURTHER INFORMATION REFER TO MECHANICAL DRAWINGS
- ⑰ 1" CONDENSATE DRAIN (INSULATED ABOVE GROUND) FROM LIEBERT UNIT. CONNECT TO DEDICATED CONDENSATE RISER. COORDINATE WITH MECHANICAL CONTRACTOR, PROVIDE P-TRAP AND CONNECT TO STORM RISER
- ⑱ ISOLATION VALVE (TYP)
- ⑲ HOT WATER RECIRCULATING PUMP (HWP-1) TYPICAL OF "TACO", MODEL 111 (5GPM@13FT, 3/4HP/115V/1725RPM), BRONZE CONSTRUCTION. PROVIDE WITH TIMER AND DISCHARGE CHECK VALVE. REFER TO MANUFACTURER'S INSTALLATION GUIDELINES
- ⑳ ASW ASTAT. WIRE TO HWP-1 STARTER
- ㉑ BALANCING COCK VALVE (TYP)
- ㉒ FUTURE DENTAL UNIT (DU) SHOWN FOR REFERENCE ONLY. DETAILED INFORMATION TO BE PROVIDED VIA SHOP DRAWINGS
- ㉓ AREA RESERVED FOR FUTURE VACUUM PUMP, FILTRATION SYSTEM & AIR COMPRESSOR SHOWN FOR REFERENCE ONLY. DETAILED INFORMATION TO BE PROVIDED VIA SHOP DRAWINGS
- ㉔ NOT USED
- ㉕ 4" PVC SLEEVE FOR FUTURE DENTAL UNIT SERVICES (FILTERED WATER, VACUUM, COMPRESSED AIR, ETC)
- ㉖ NEW SINK (SK-2). CONTRACTOR TO PROVIDE WITH STOP VALVES, FITTINGS, FAUCET, SUPPORT AND ALL RELATED APPURTENANCES REQUIRED TO SUCCESSFULLY CONNECT NEW FIXTURE TO EXISTING PLUMBING SERVICES (WATER, SANITARY, VENT, ETC.)
- ㉗ DRAIN/IWR (FD-3). PROVIDE WITH INDIRECT WASTE RECEPTOR IN ACCORDANCE WITH FBC-PLUMB(14)-802.2 TO RECEIVE INDIRECT WASTE FROM SUMP PUMP DISCHARGE. PROVIDE WITH REMOVABLE BARRIER TO PREVENT SPLASHING



Humana

Project  
Humana CAC Little Havana  
1200 SW 1st Street  
Miami, FL 33135  
Prepared for  
Humana, Inc.  
Contract No: 13.01605.00



Hellmuth, Obata & Kassabaum Inc.  
Architecture, Structures, Landscape and Lighting  
10 South Broadway, Suite 200  
St. Louis, MO 63102 USA  
t +1 314 421 2000 f +1 314 421 6073  
Architecture - Certificate of Authorization # AAC001139  
Structural Eng - Certificate of Authorization # 4301  
Landscape - Certificate of Authorization # TLC34

All reproduction & intellectual property rights reserved © 2015  
In Association with



Civil Works  
Civil Engineer  
Certificate of Authorization # 07528  
8491 NW 17th Street, Suite 108  
Doral, FL 33126  
P: 305.591.4323  
F: 305.591.4074  
www.civilworks.com



SDM  
MEP Engineer  
Certificate of Authorization # EB00003791  
135 Almeria Avenue  
Coral Gables, FL 33134  
P: 305.446.2788  
F: 305.443.5944  
www.sdmcorp.com

Key Plan



Professional Seals

ERNESTO ALONSA P.E. 53623		JOSE L. MARTINEZ P.E. 53779	
No.	Issue Description	YYYY-MM-DD	
1	ISSUE FOR PERMIT AND BID	2015-10-30	
2	BUILDING DEPT COMMENTS	2016-06-04	
3	ADDENDUM 2	2016-05-31	
4	BULLETIN 01	2016-08-15	

Drawn by

Reviewed by

Project No 13.01605.00

Sheet Title:

LEVEL 1 OVERALL  
DRAIN/VENT ISOMETRIC  
DIAGRAM - PLUMBING

Original drawing is 36 x 24. Do not scale contents of this drawing

Sheet Number

P103