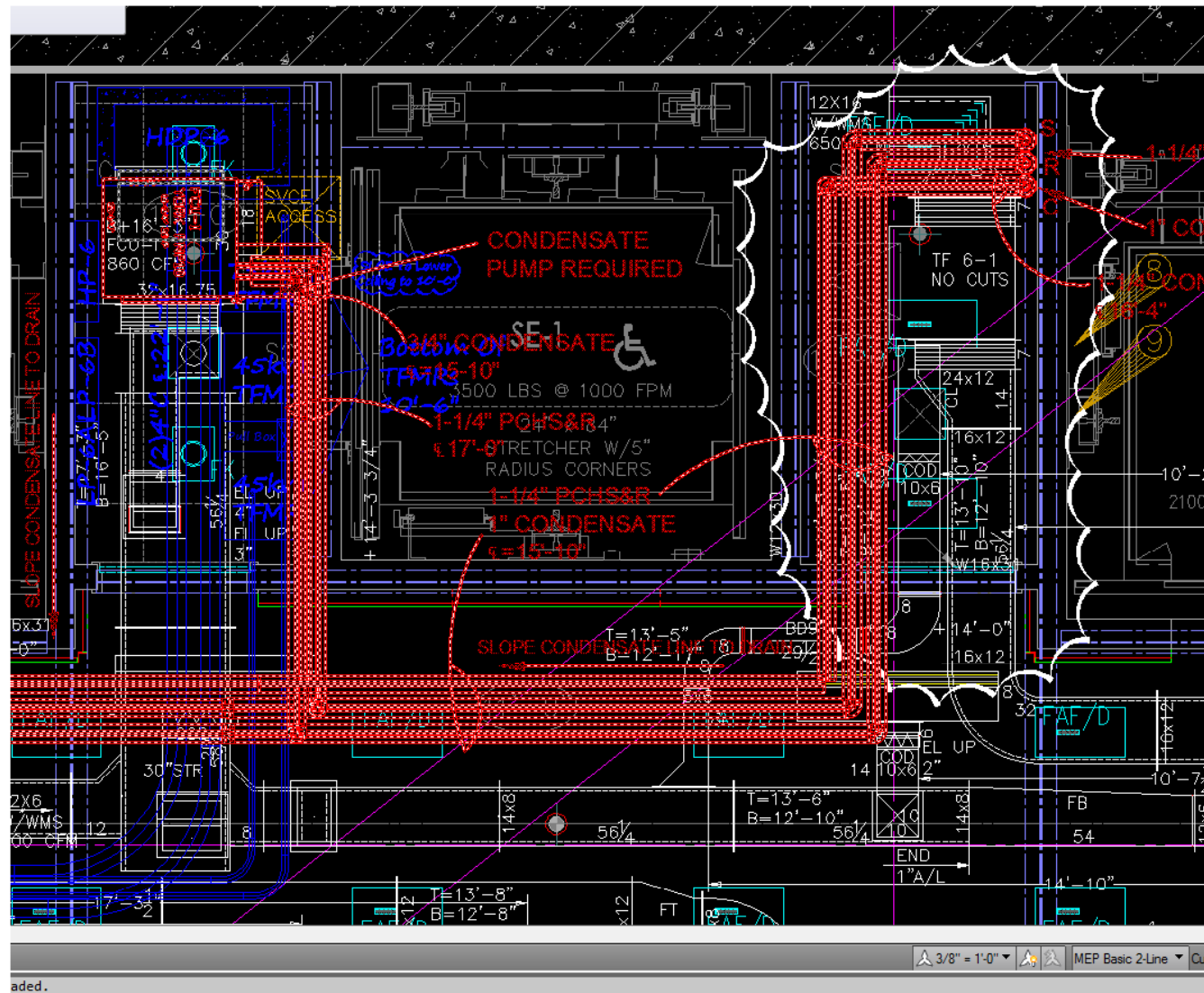


ORIGINAL FILE SAVED IN 2010 FORMAT  
USING 'MEP BASIC 2 LINE' DISPLAY



FILE THAT WAS MODIFIED IN 2013, BUT THEN BACK  
SAVED TO 2010 FORMAT.

NOTE RED AND BLUE MEP OBJETS NOW DISPLAY AS  
HEAVY POLYLINES.

PORTIONS OF 2010 FORMAT DRAWINGS CAN NOW  
NO LONGER BE PASTED INTO THE FILE.

THE DISPLAY STYLE CAN NOT BE CHANGED.

