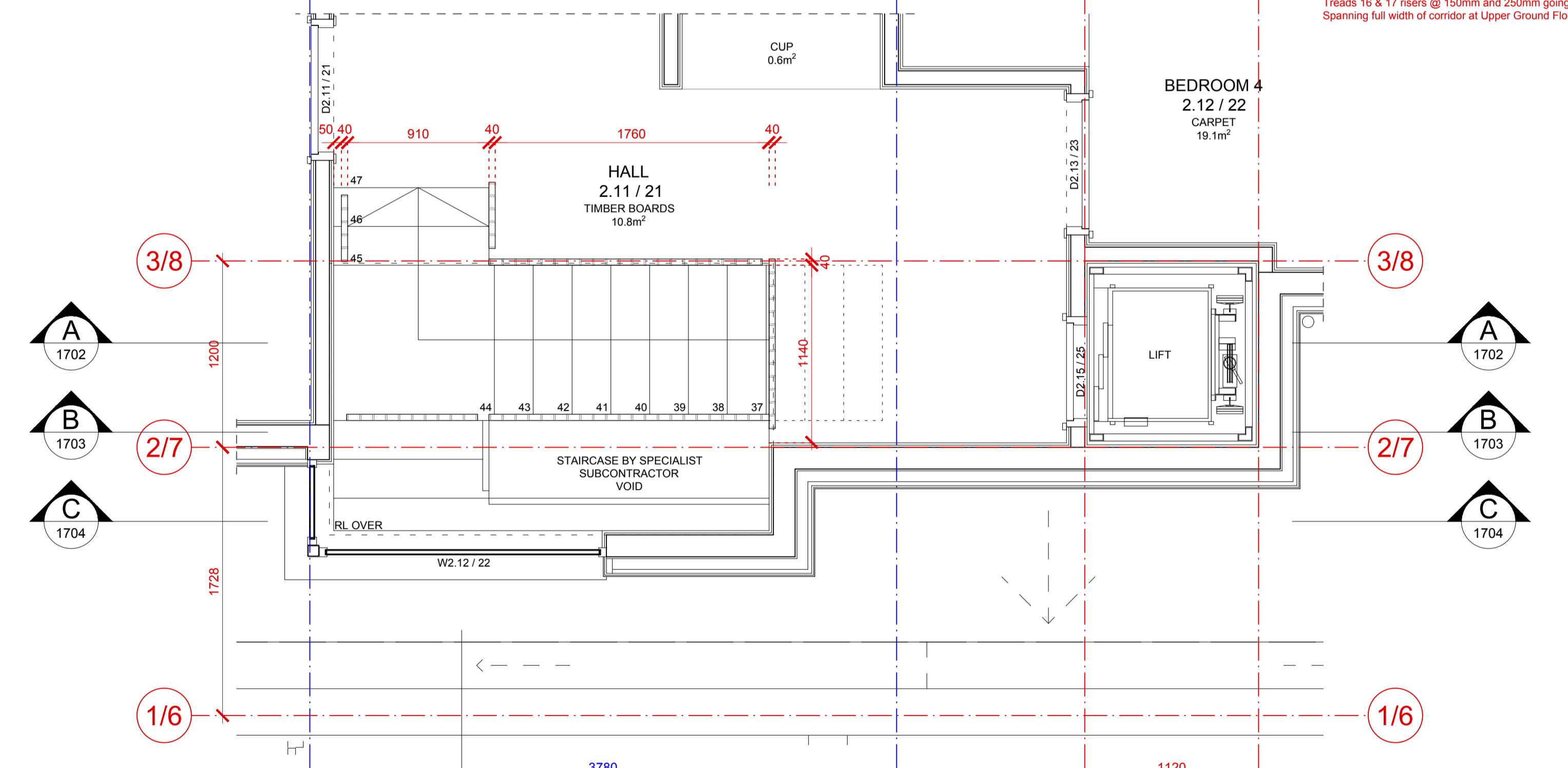
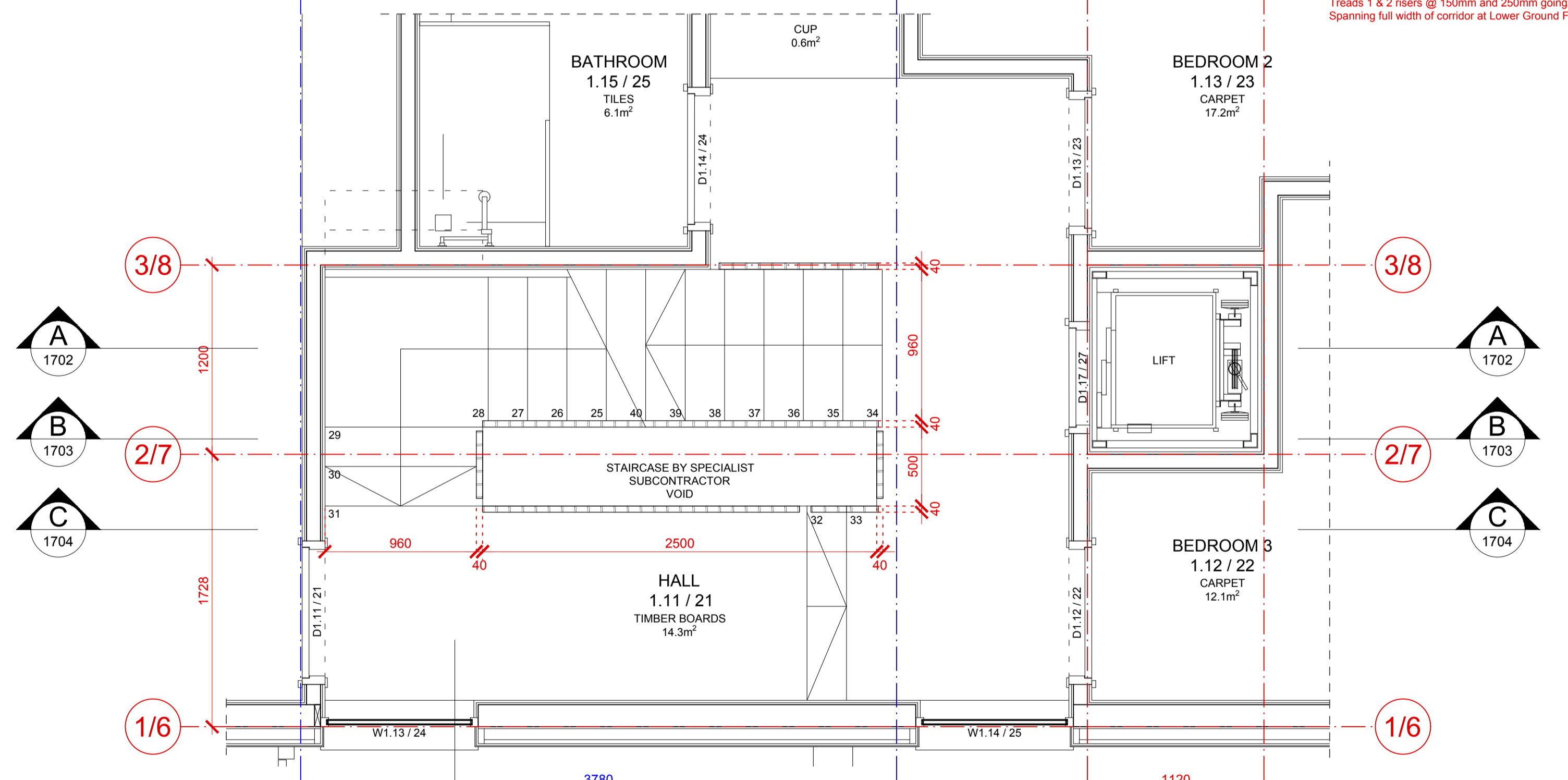


LOWER GROUND FLOOR PLAN

UPPER GROUND FLOOR PLAN



FIRST FLOOR PLAN

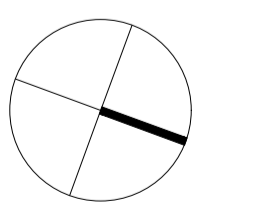
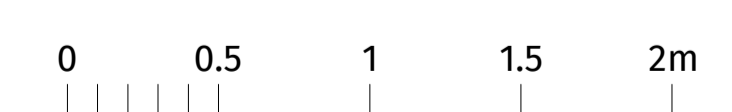
SECOND FLOOR PLAN

HOUSE 1 & 2 - STAIR PLANS

Lower Ground Floor to Upper Ground Floor Flight
13 Risers at 192.31mm
Goings @ 250mm
Folded Steel and Timber Treads with
Welded Steel Handrails and Balustrades
Treads 1 & 2 risers @ 150mm and 250mm goings
Spanning full width of corridor at Lower Ground Floor

Upper Ground Floor to First Floor Flight
14 Risers at 192.86mm
Goings @ 250mm
Folded Steel and Timber Treads with
Welded Steel Handrails and Balustrades
Treads 16 & 17 risers @ 150mm and 250mm goings
Spanning full width of corridor at Upper Ground Floor

First Floor to Second Floor Flight
14 Risers at 192.86mm
Goings @ 250mm
Folded Steel and Timber Treads with
Welded Steel Handrails and Balustrades
Treads 32 & 33 risers @ 150mm and 250mm goings
Spanning full width of corridor at First Floor



**SALT
+WHITE**
architects

19-20 Great Sutton St
London EC1V 0DR
020 7490 4862
www.saltwhite.co.uk

Revisions:

Project:

30-31 Whitecliff Road, Poole BH14 8DX

Status:

Tender

Drawing:

Stair Plans

Scale:

1:25@A1 / 1:50@A3

Date:

August 2017

Drawing No:

0421-1701-T0