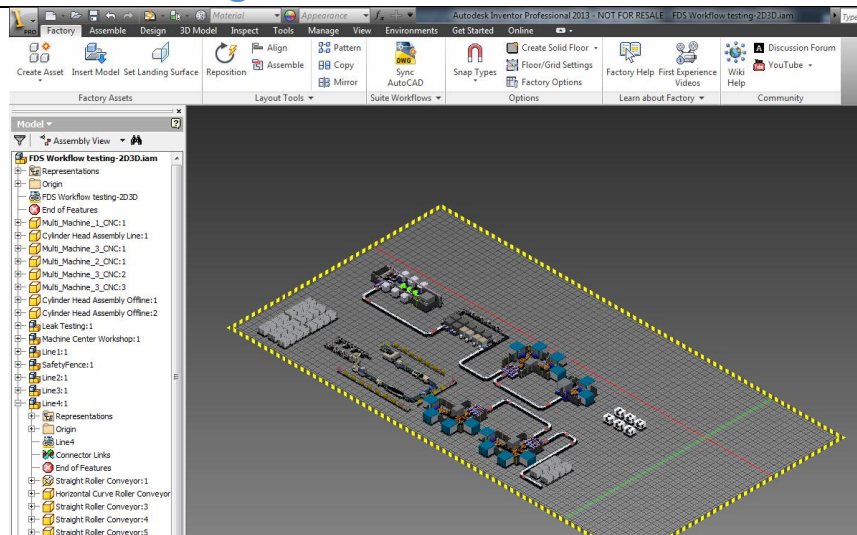


Basic Workflow Testing

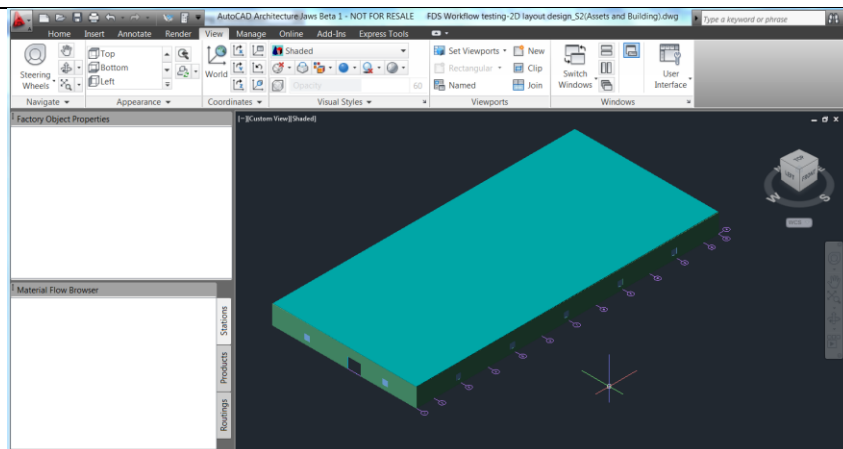
- **Focus:** Plan and Section Views
- **Key functions:** Convert AEC Objects to 3D Solid; Import DWG Solids; Inventor Drawing
- **Case Designer:** Xuesong Bai
- **Tester:** Xuesong Bai

Integrate 3Dlayout and Building

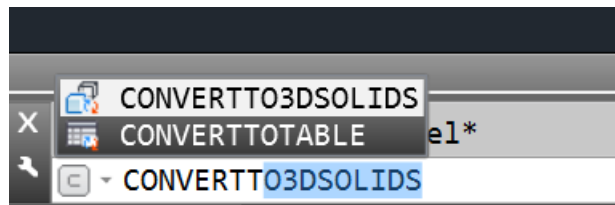
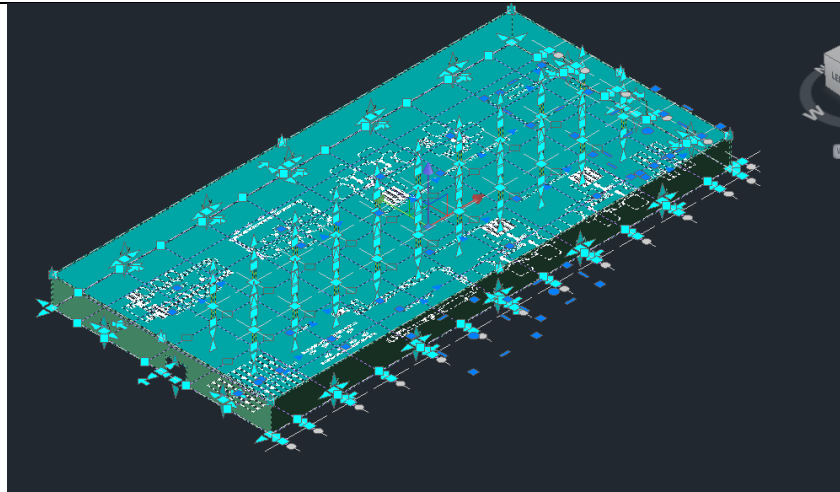
1) Sync Inventor to get the 3D layout design in Inventor



2) Launch AutoCAD Architecture
• Open the AutoCAD Architecture Buildings Design

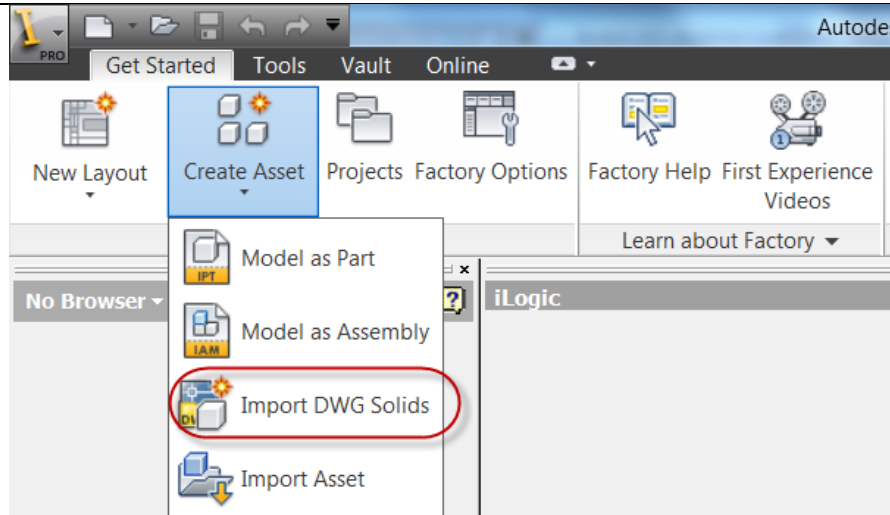


- 3) Convert AEC objects to 3D solid
- Select all AEC Objects
 - Start **CONVERTT03DSOLIDS** command

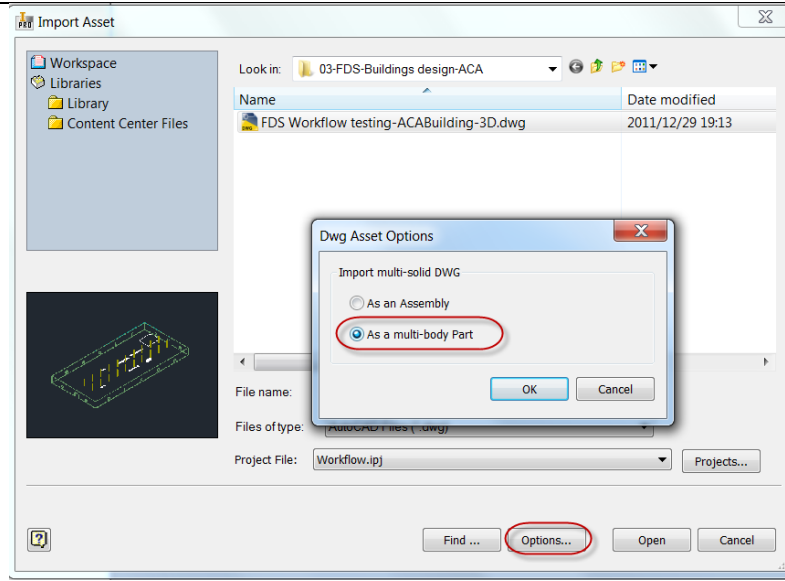


- 4) Back to 3D layout design in Inventor

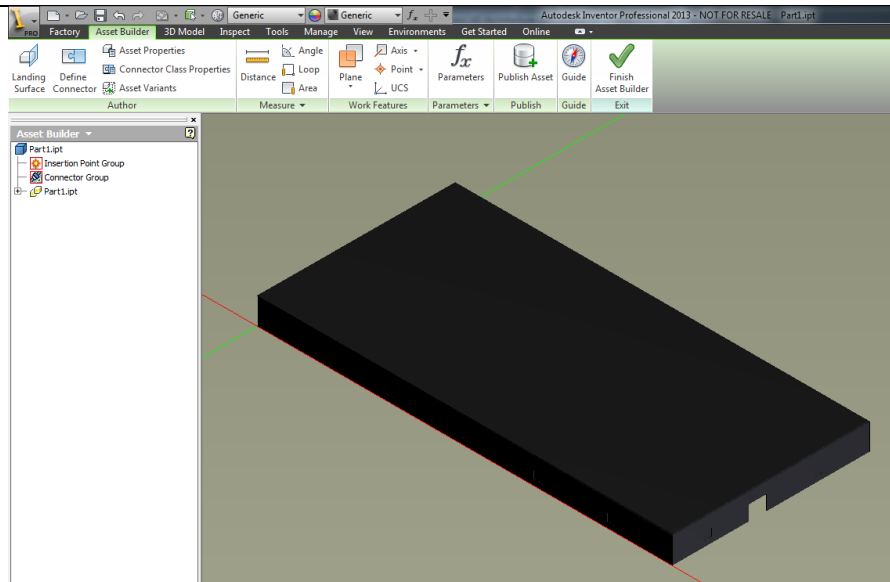
- 5) Click Get Started Tab>-Create Asset>-Import DWG Solids



6) Select the Exported 3D DWG building and check As a multi-body part in option dialog

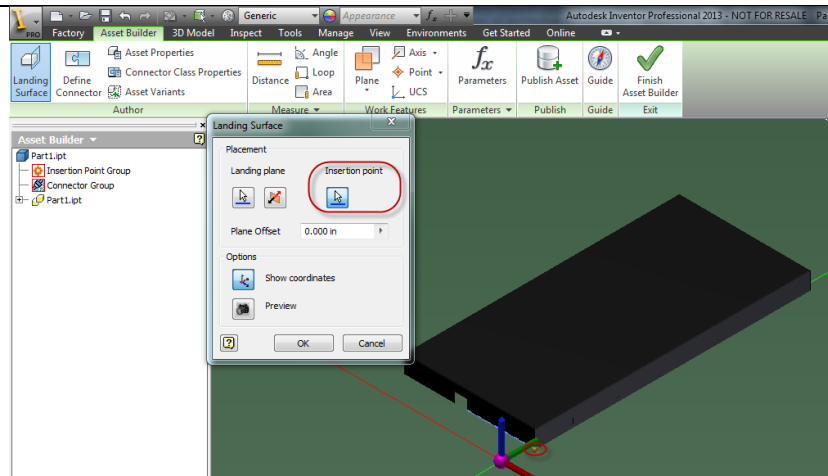


7) The 3D part is entered to the asset builder environment automatically.

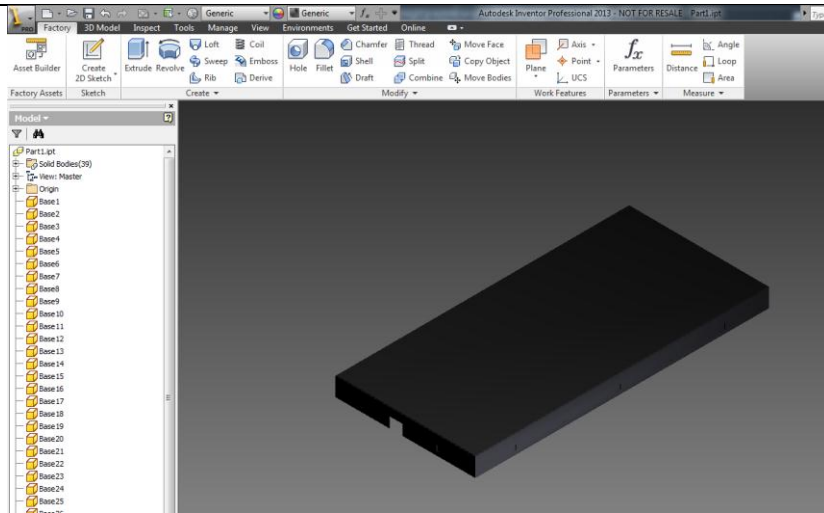


8) Launch Landing surface command

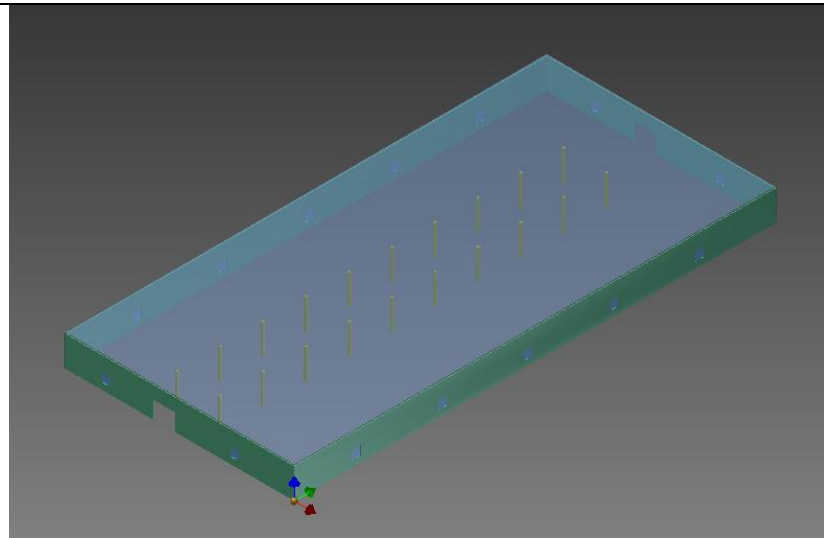
- Set the landing surface to the bottom surface of wall
- Set insertion point to the outside corner



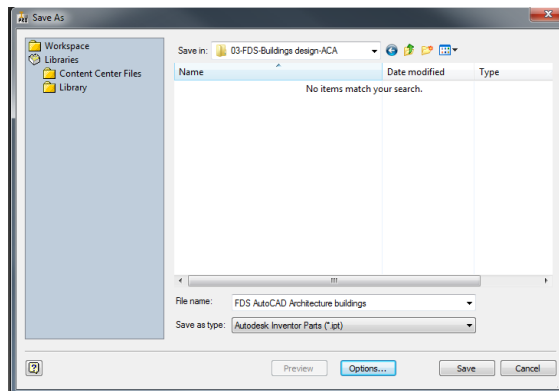
9) Exit the Asset Builder environment



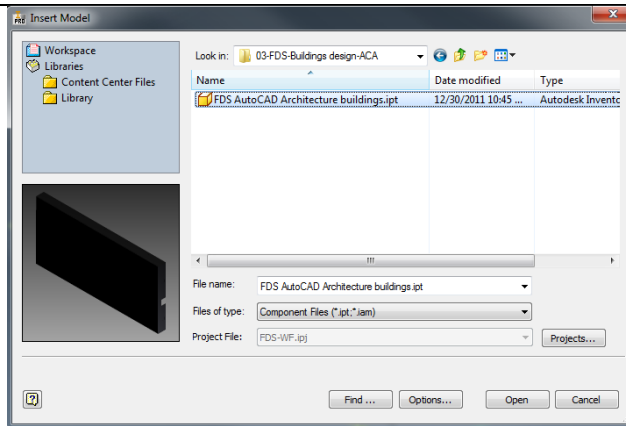
10) Change the Appearance of the asset



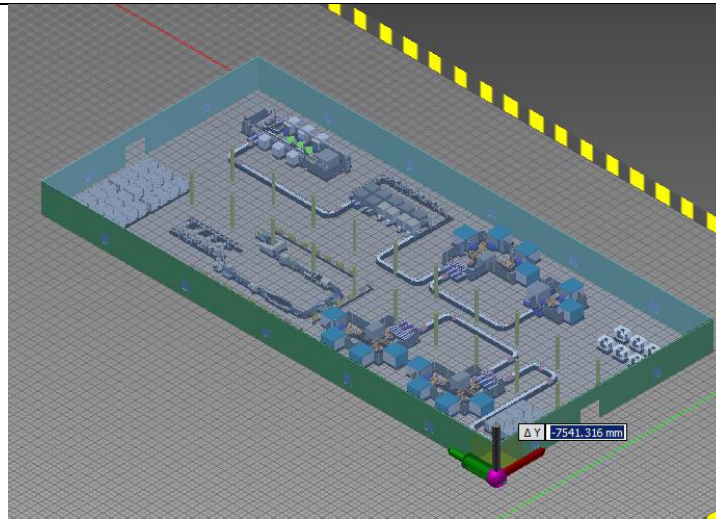
11) Save the building's design



- 12) Launch Insert Model command
- Select the building's design above

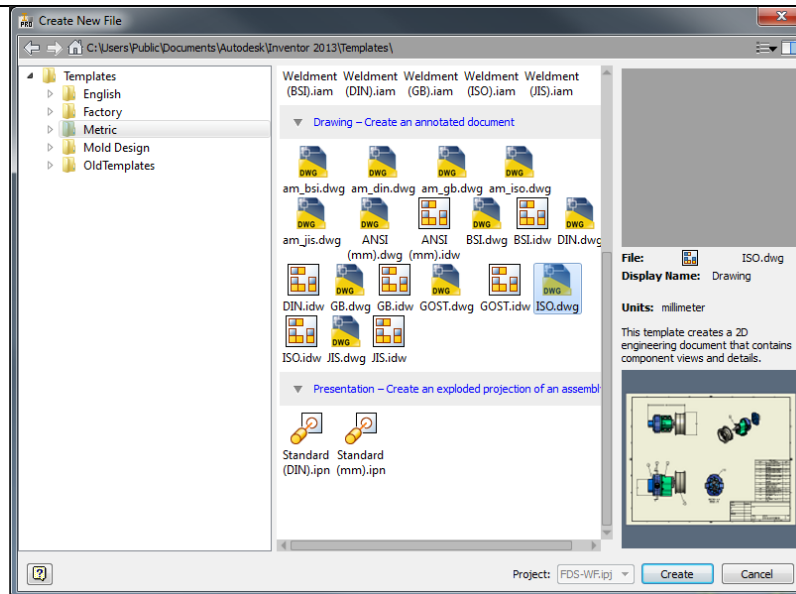


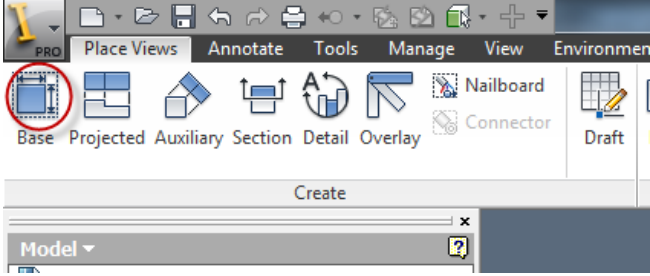
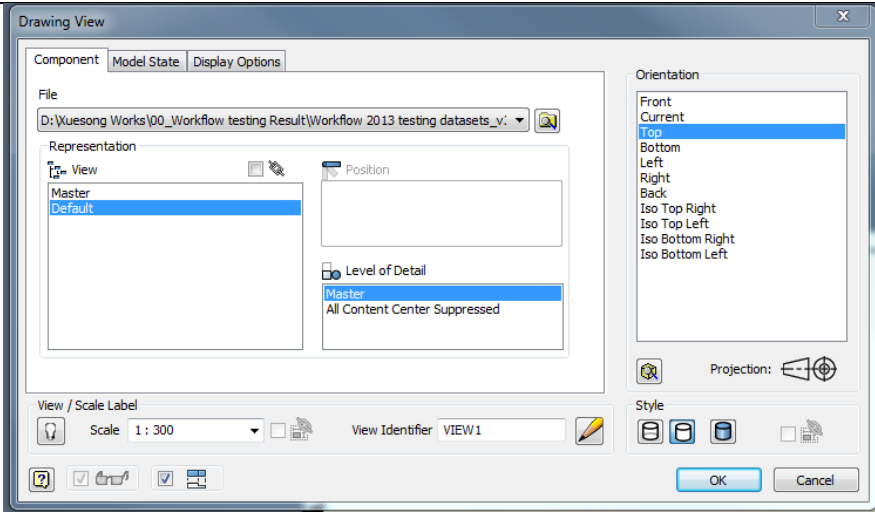
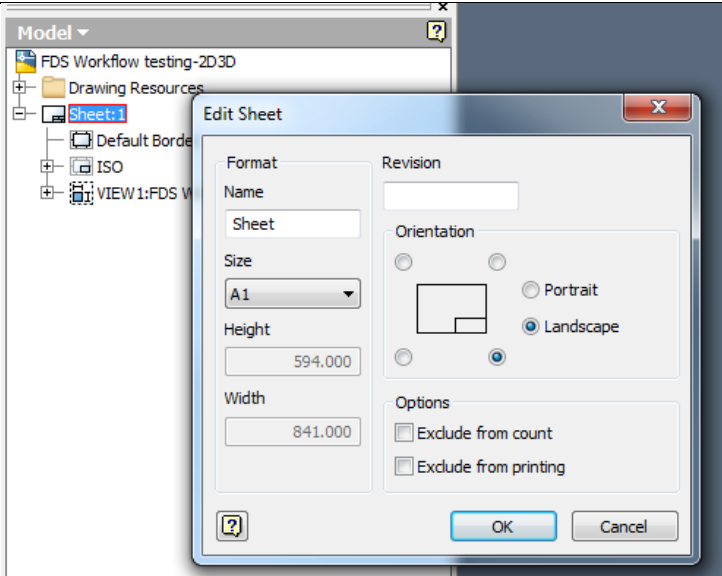
- 13) Launch Reposition command
- Select the building part
 - Move it to right position

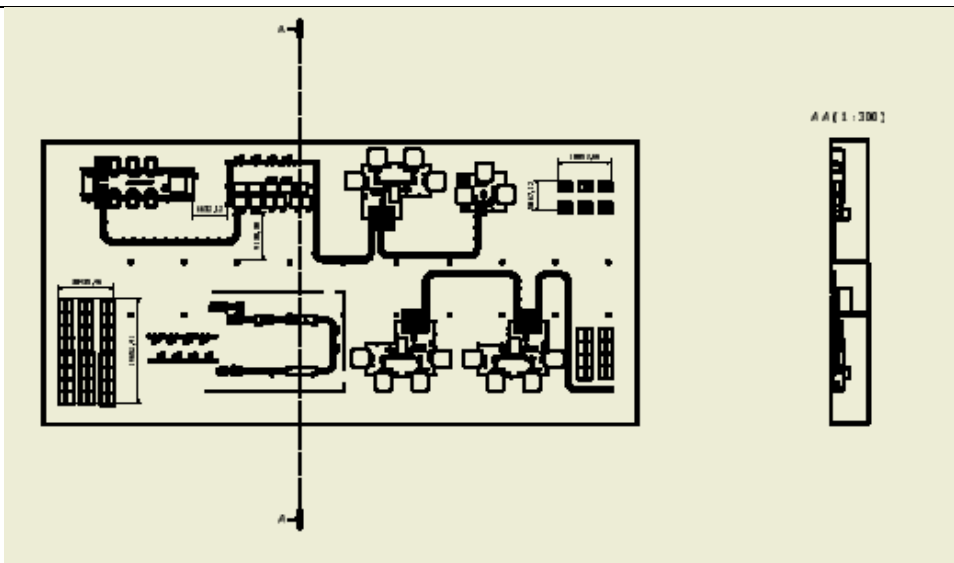
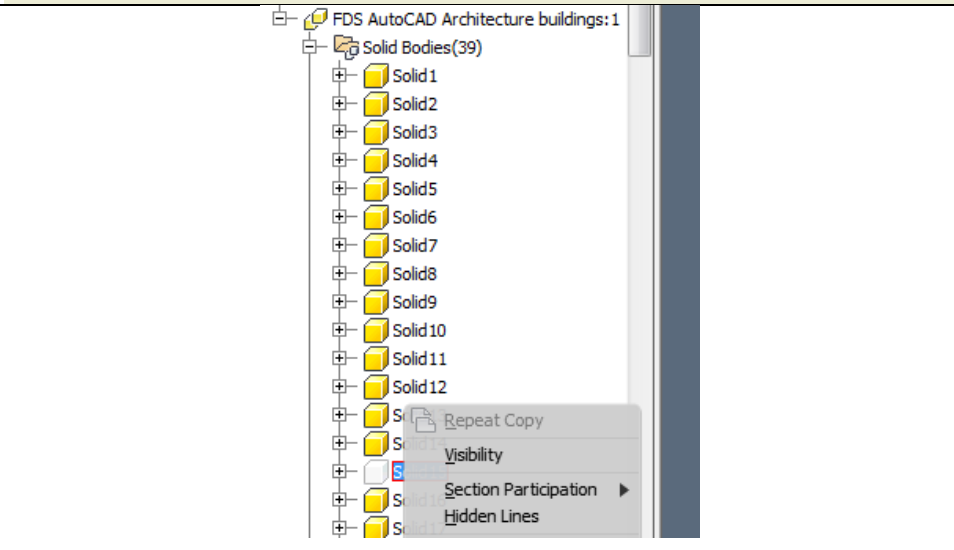
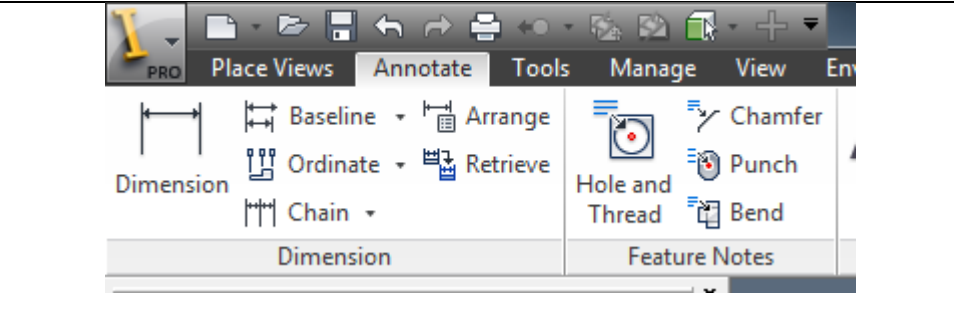


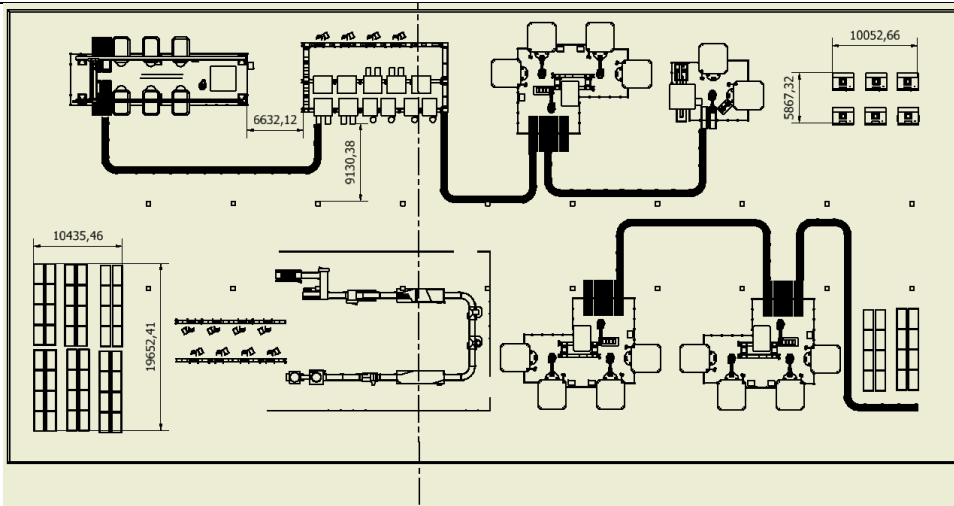
■ Inventor Drawing

- 14) New Inventor Drawing and select DWG template

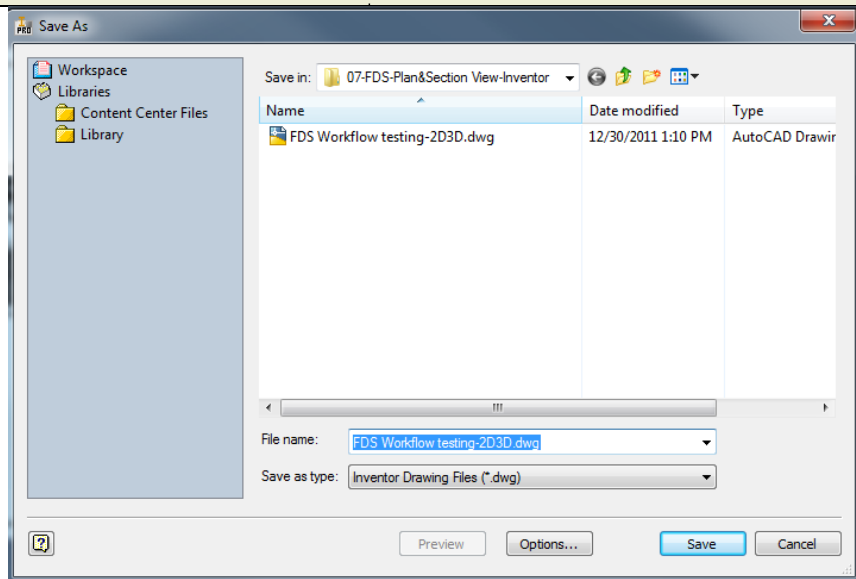


<p>15) Click Base view command</p>		
<p>16) In the following dialog</p> <ul style="list-style-type: none"> • Select the 3D layout as Base View • Select the Orientation as Top view • Set the Scale as 1:300 		
<p>17) Edit the sheet and set the size as A1</p>		
<p>18) Click Place Views>-Section command</p> <ul style="list-style-type: none"> • Select the base view • Draw section line • Place section 		

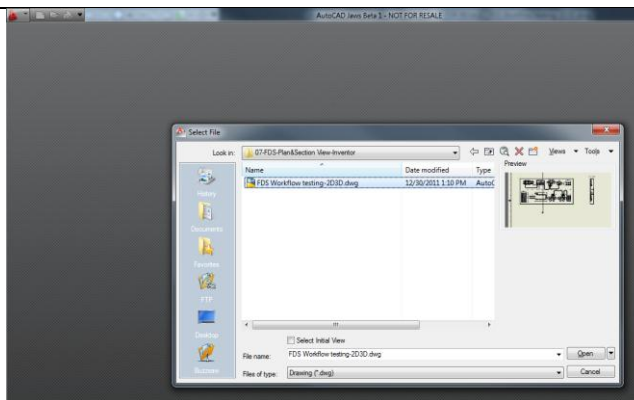
<p>view in the proper position</p>		
<p>19) Expand the Building part and make the roof body as invisible</p>		
<p>20) Go to Annotation Tab and click Dimension command</p> <ul style="list-style-type: none"> • Dimension the drawing 		



21) Save the DWG drawing



22) Open it in ACAD



FDS2013 Workflow Testing

