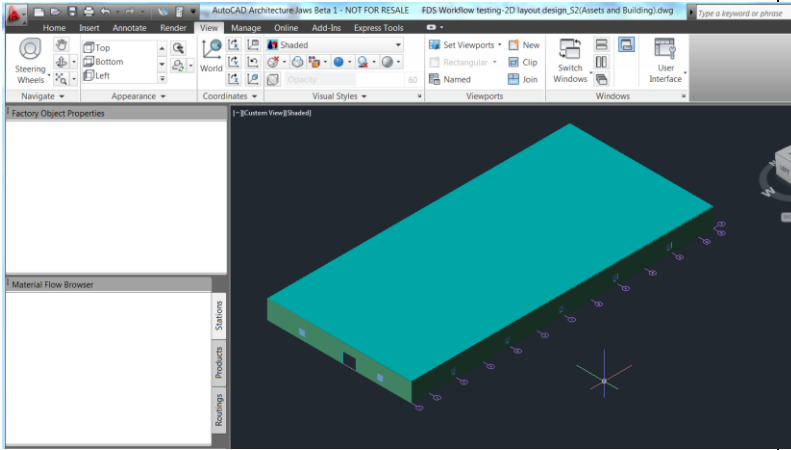
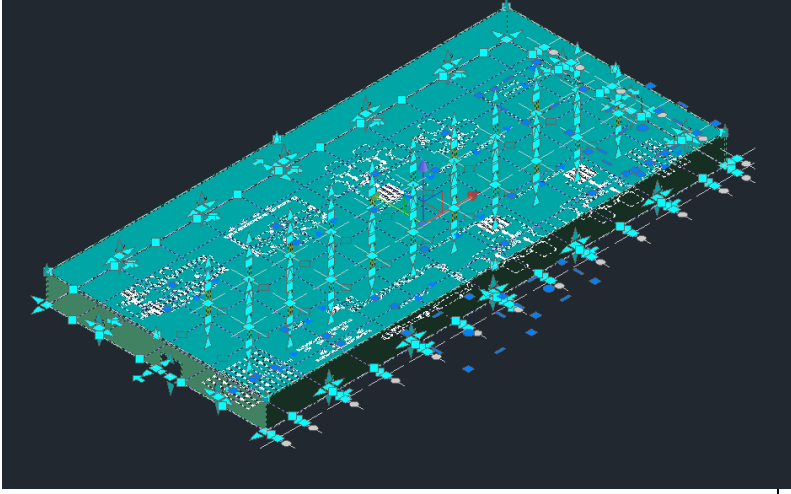
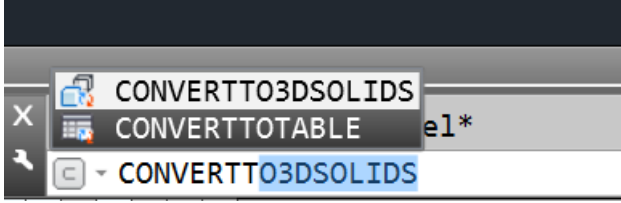
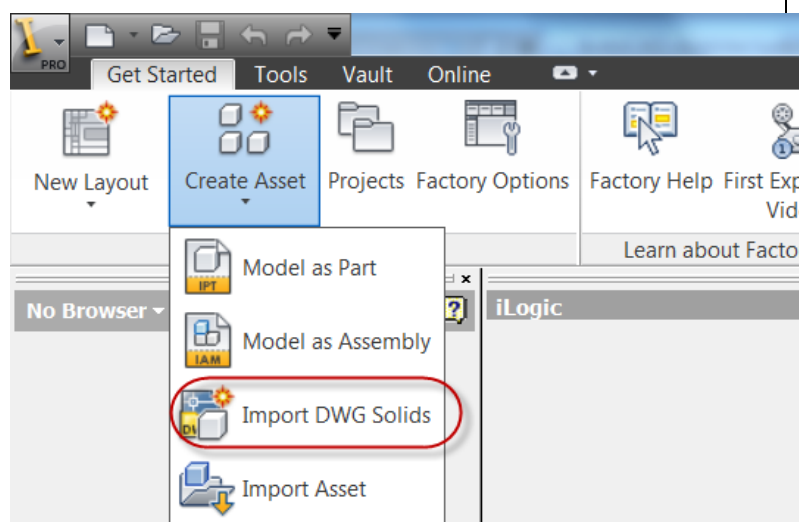


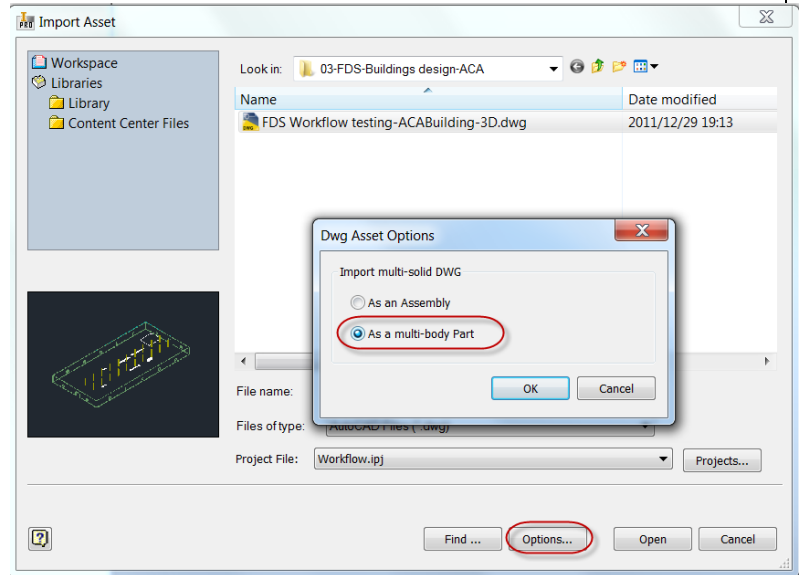
■ Integrate 3Dlayout and Building

<p>1) Launch AutoCAD Architecture</p> <ul style="list-style-type: none"> <li>• Open the AutoCAD Architecture Buildings Design</li> </ul>	
<p>2) Convert AEC objects to 3D solid</p> <ul style="list-style-type: none"> <li>• Select all AEC Objects</li> <li>• Start <b>CONVERTTO3DSOLIDS</b> command</li> </ul>	 
<p>3) Launch Inventor</p>	

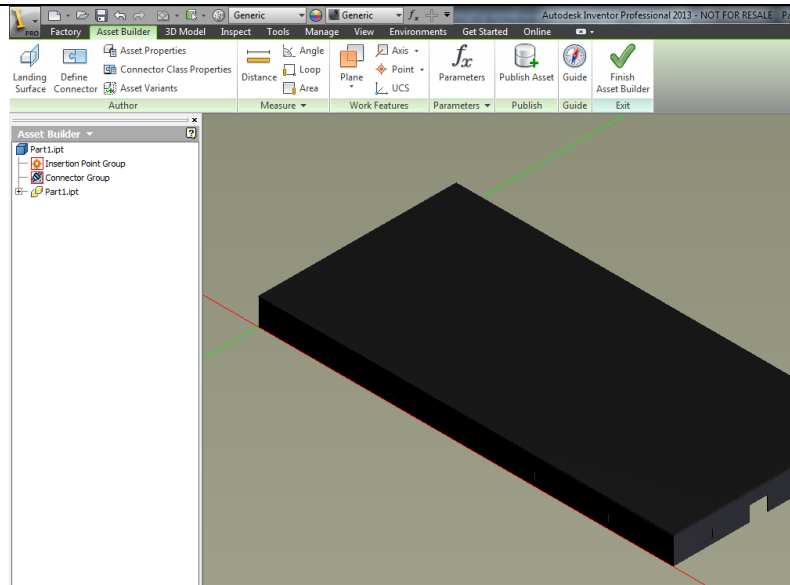
4) Click Get Started Tab>-Create Asset>-Import DWG Solids



5) Select the Exported 3D DWG building and check As a multi-body part in option dialog

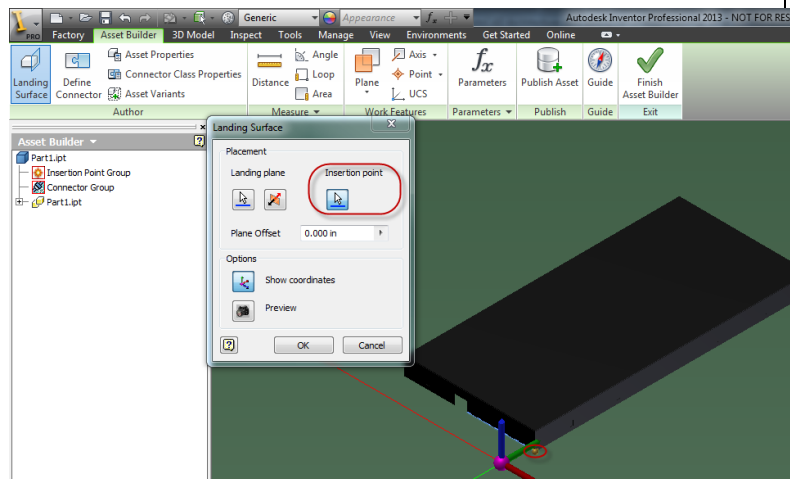


6) The 3D part is entered to the asset builder environment automatically.

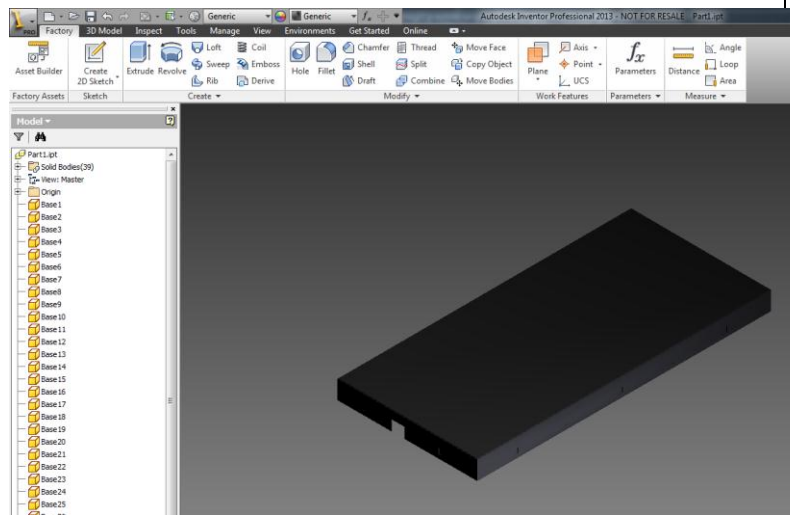


7) Launch Landing surface command

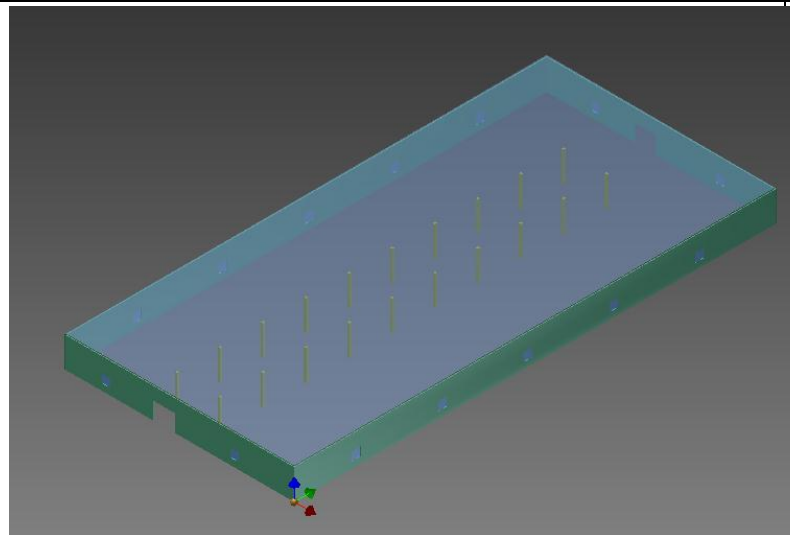
- Set the landing surface to the bottom surface of wall
- Set insertion point to the outside corner



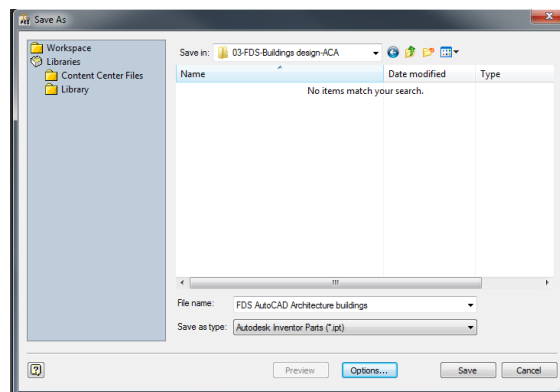
8) Exit the Asset Builder environment



9) Change the Appearance of the asset

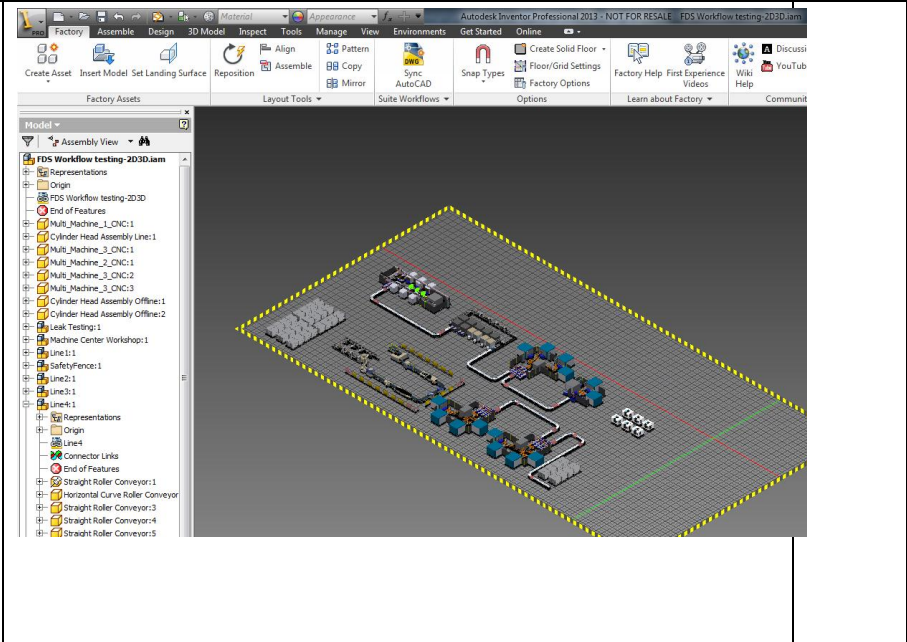


10) Save the building's design



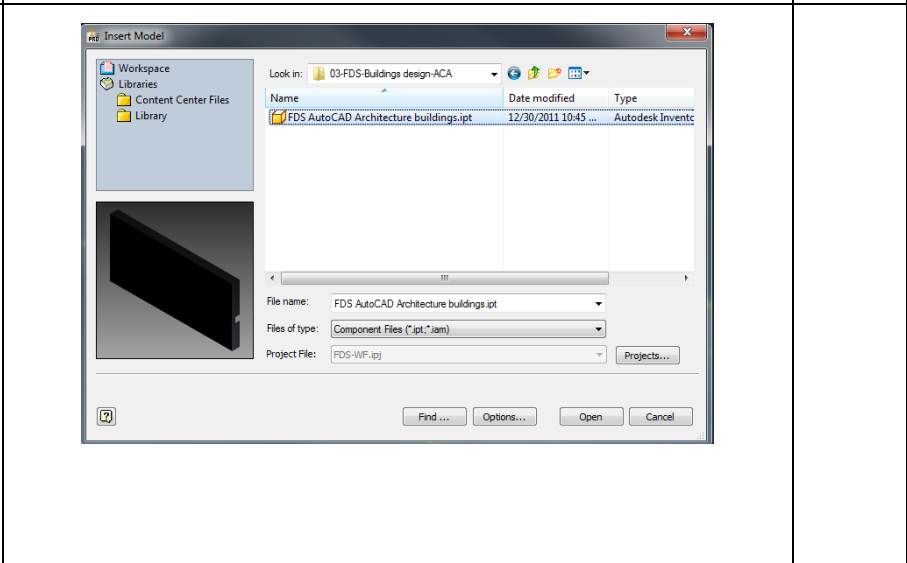
--	--	--

11) Open the 3D layout design in 04-FDS Workflow Testing-2D-3D.docx



12) Launch Insert Model command

- Select the building's design above



- 13) Launch  
Reposition  
command
- Select the  
building  
part
  - Move it to  
right  
position

