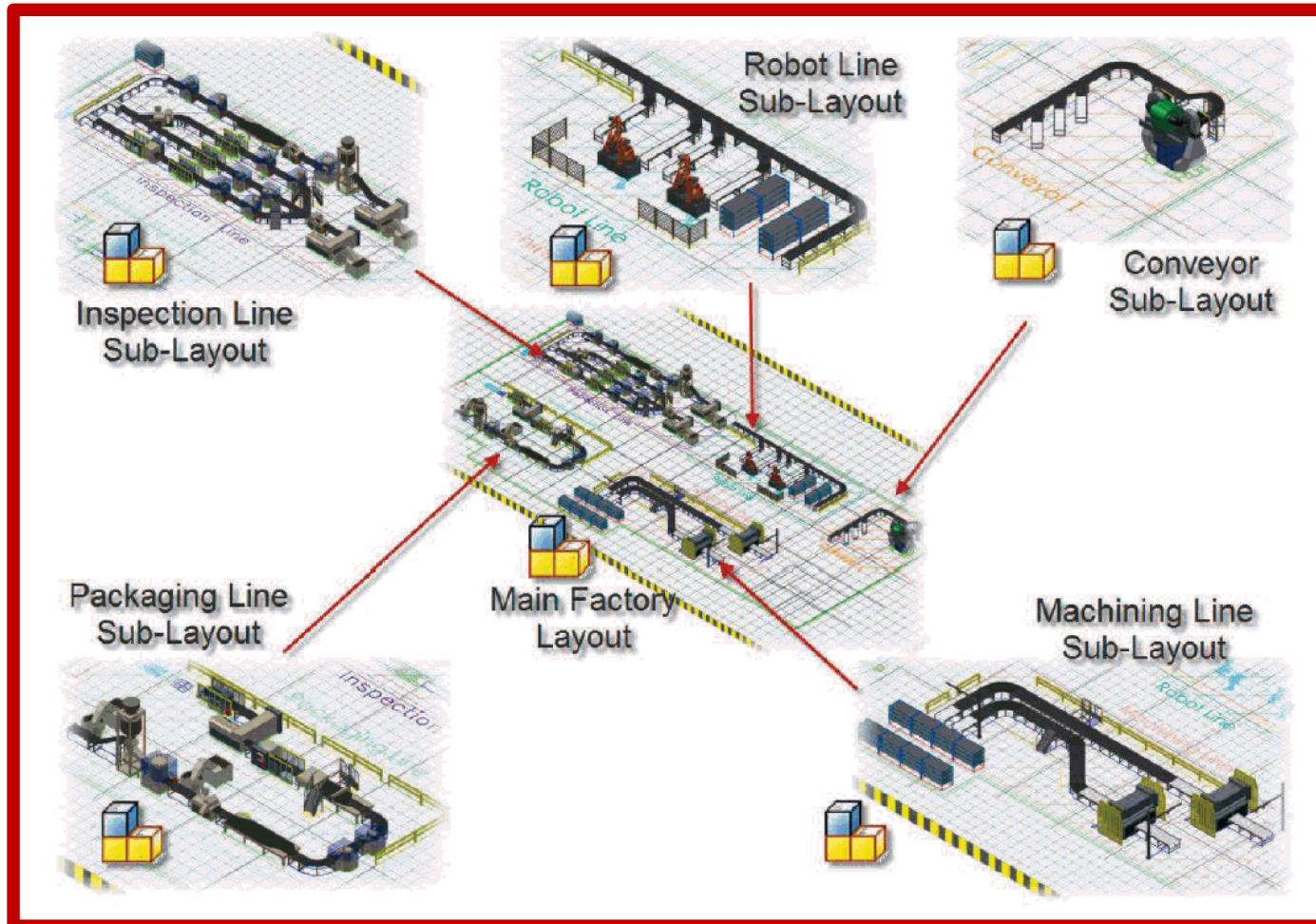




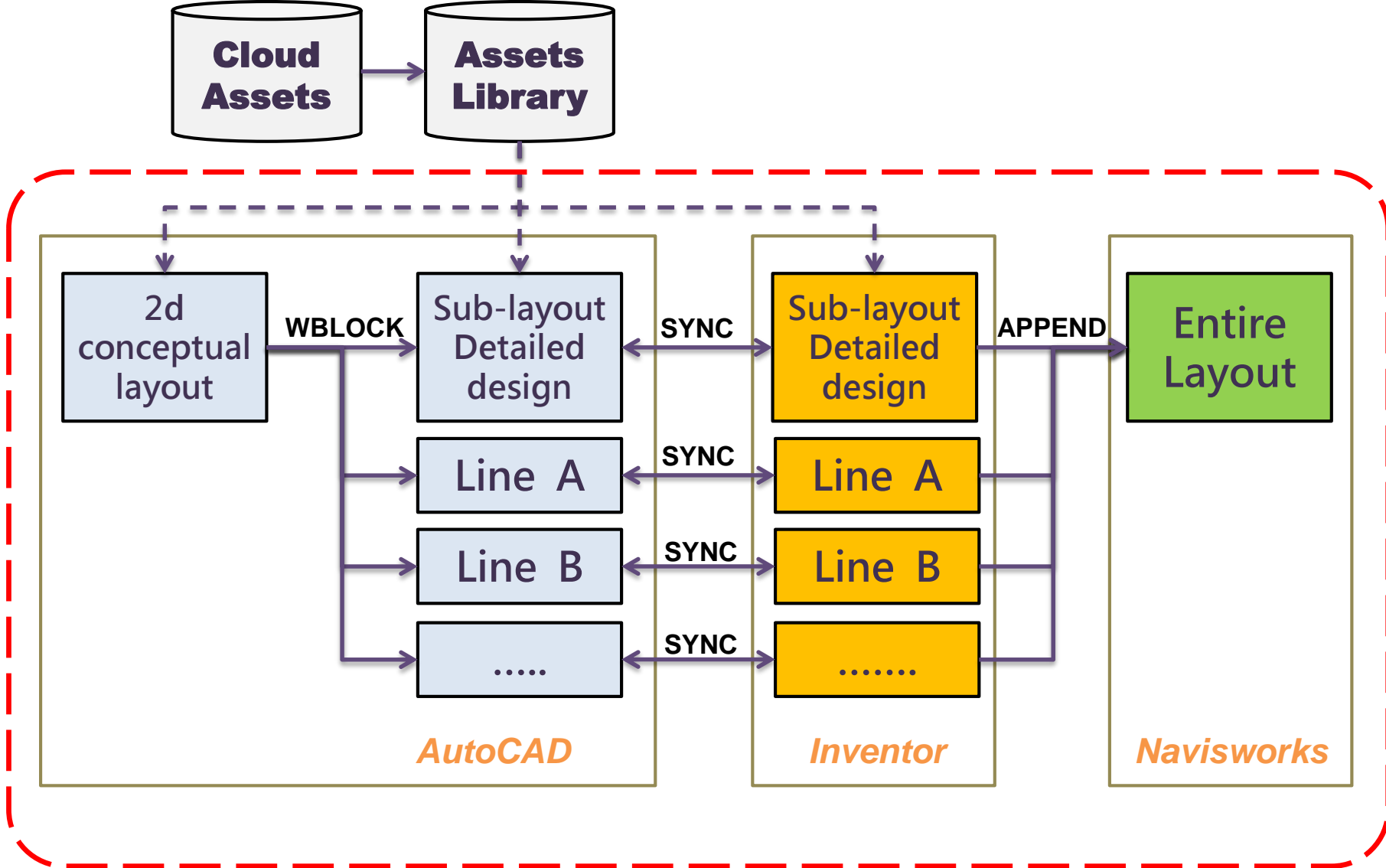
The Workflow To Large Production Line In FDS 2014

Xuesong Bai

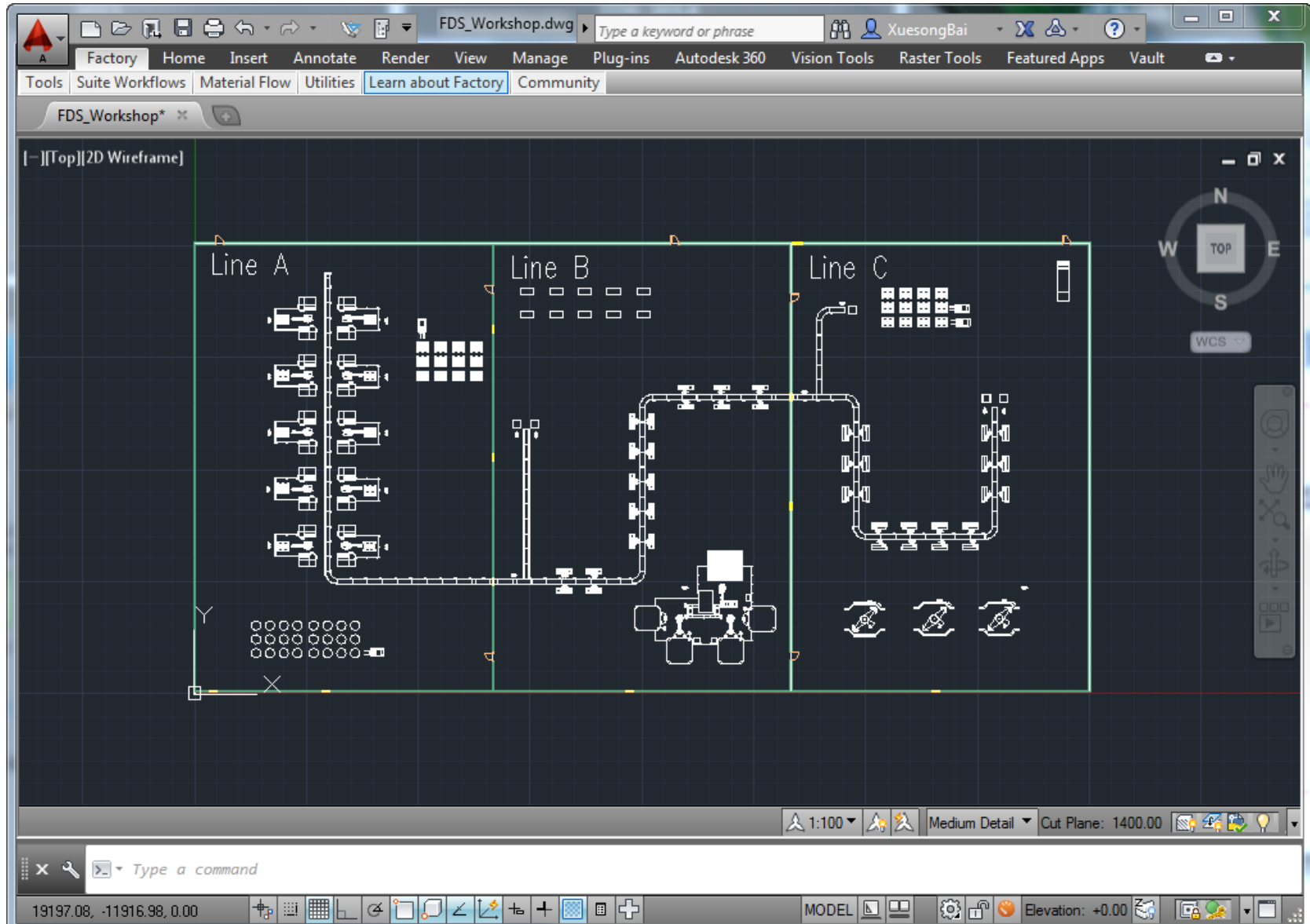
Goal: Synchronous design, split line, reduction of project time



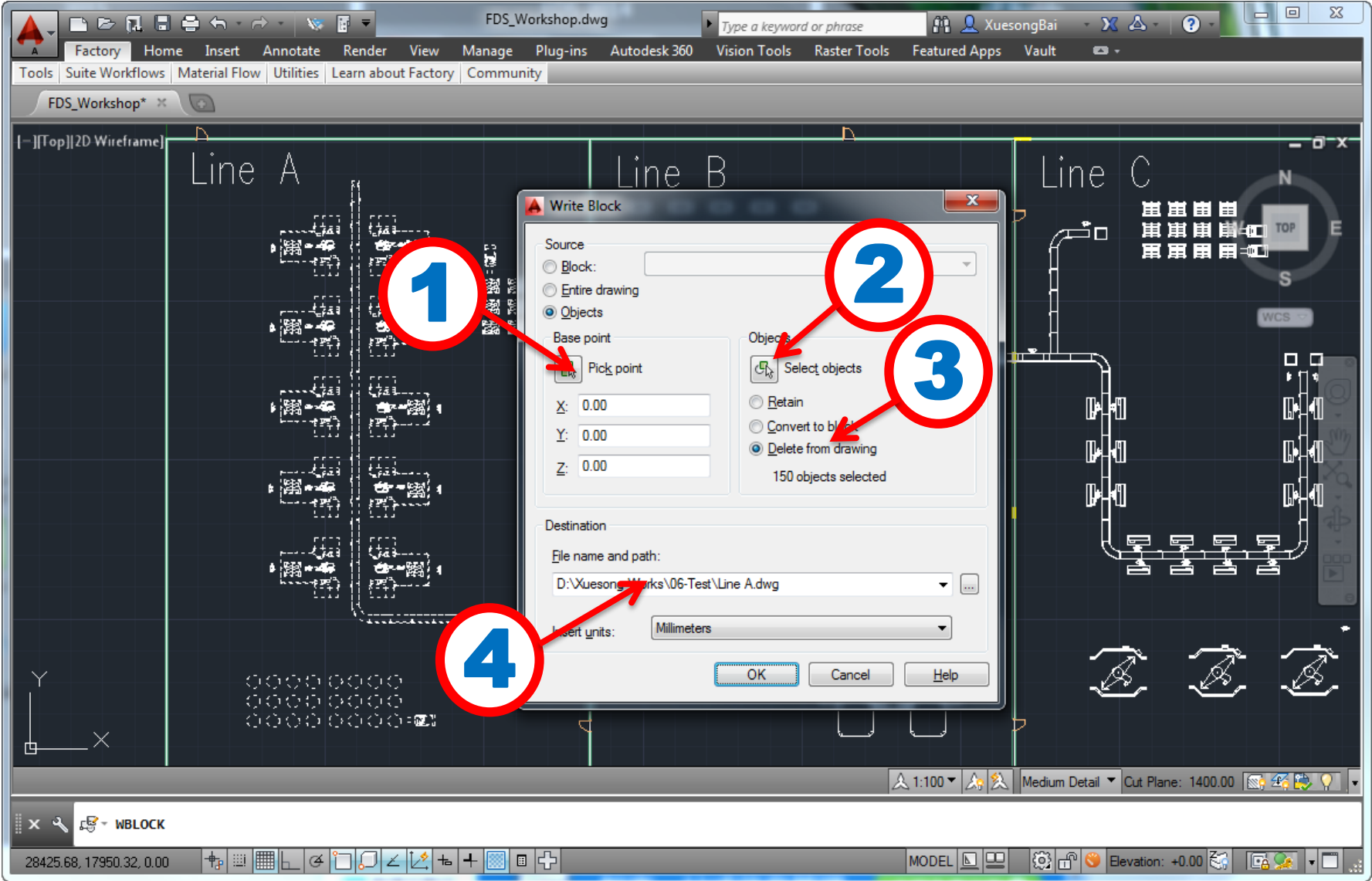
FDS 2014 workflow of synchronous design for large production line



Step 1: Site planning and conceptual 2d layout design by chief engineer

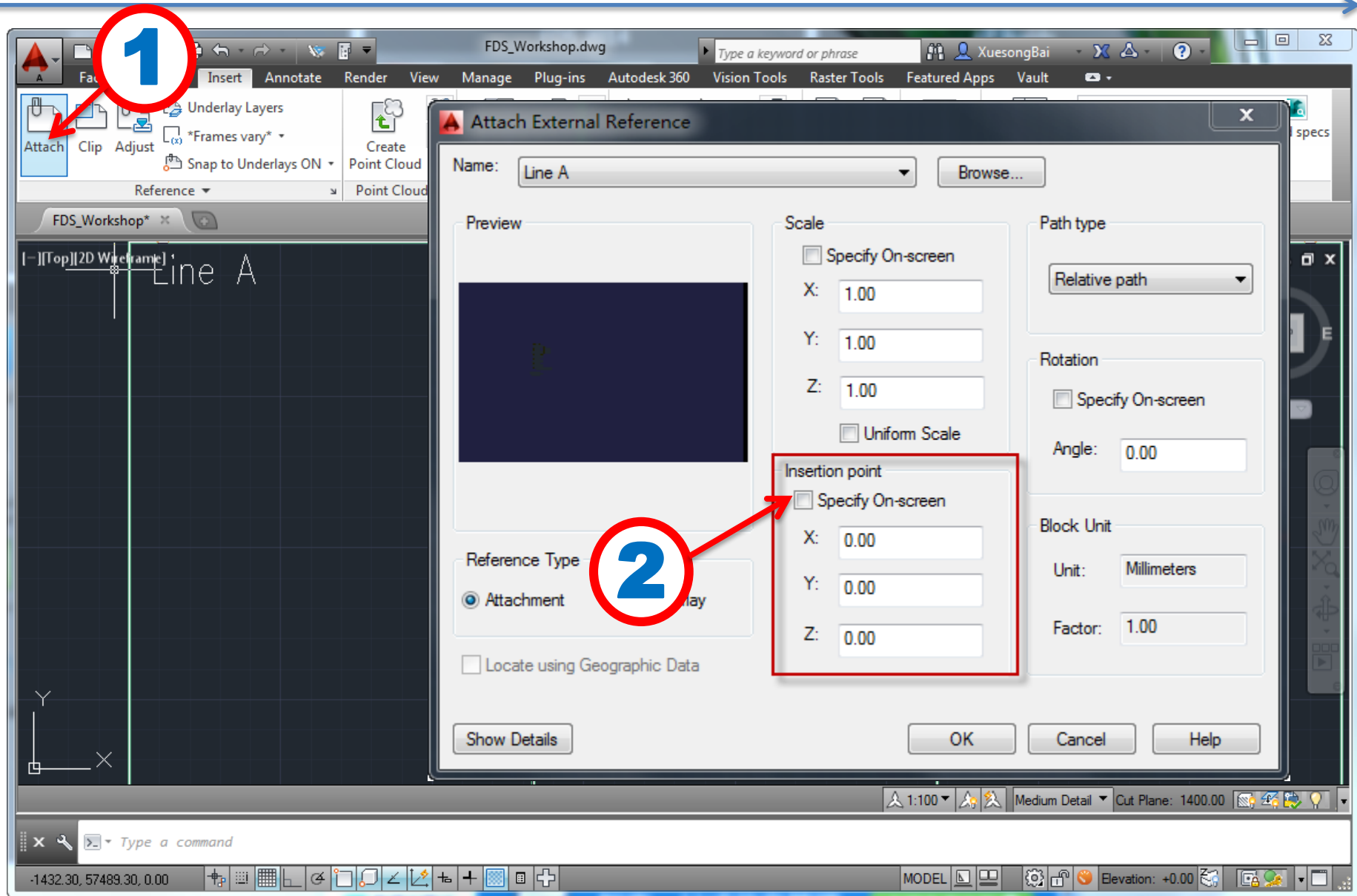


Step 2: Split the production line with WBLOCK command



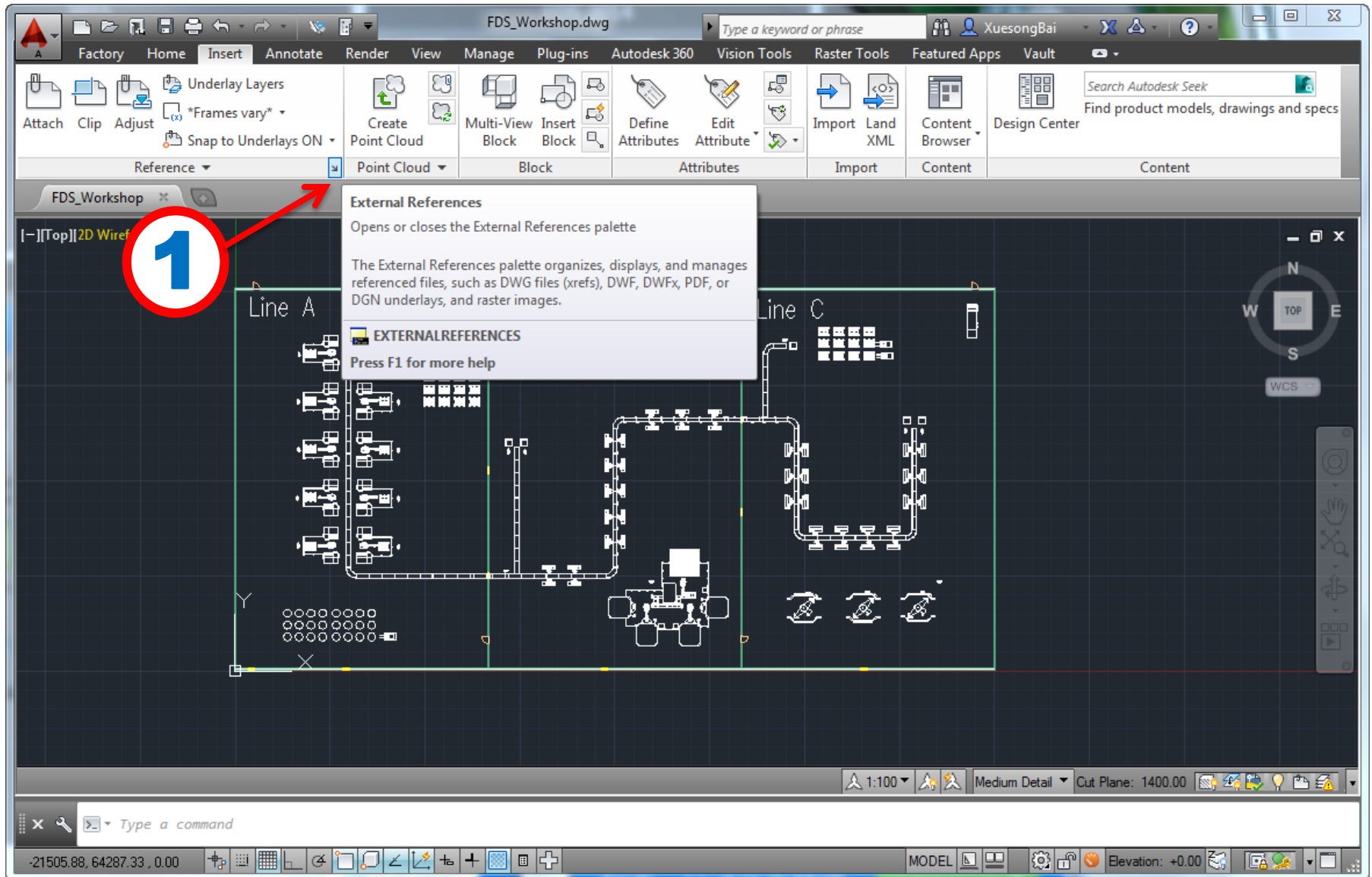
※※※ Following step 1,2,3,4 for the each sub-layout

Step 3: Attach the sub-layout back to top layout

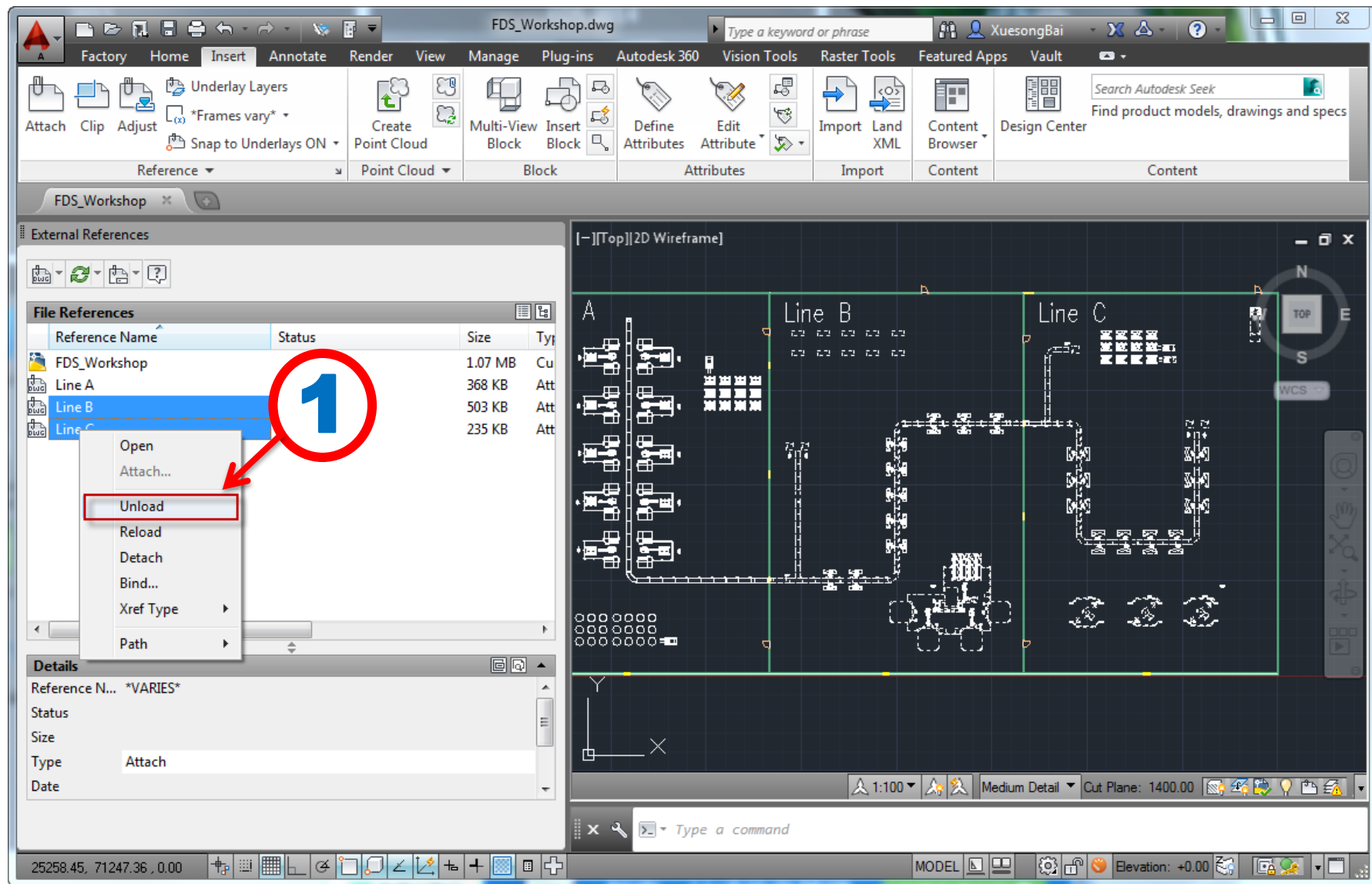


Uncheck "Specify On-screen", the original location will be same.

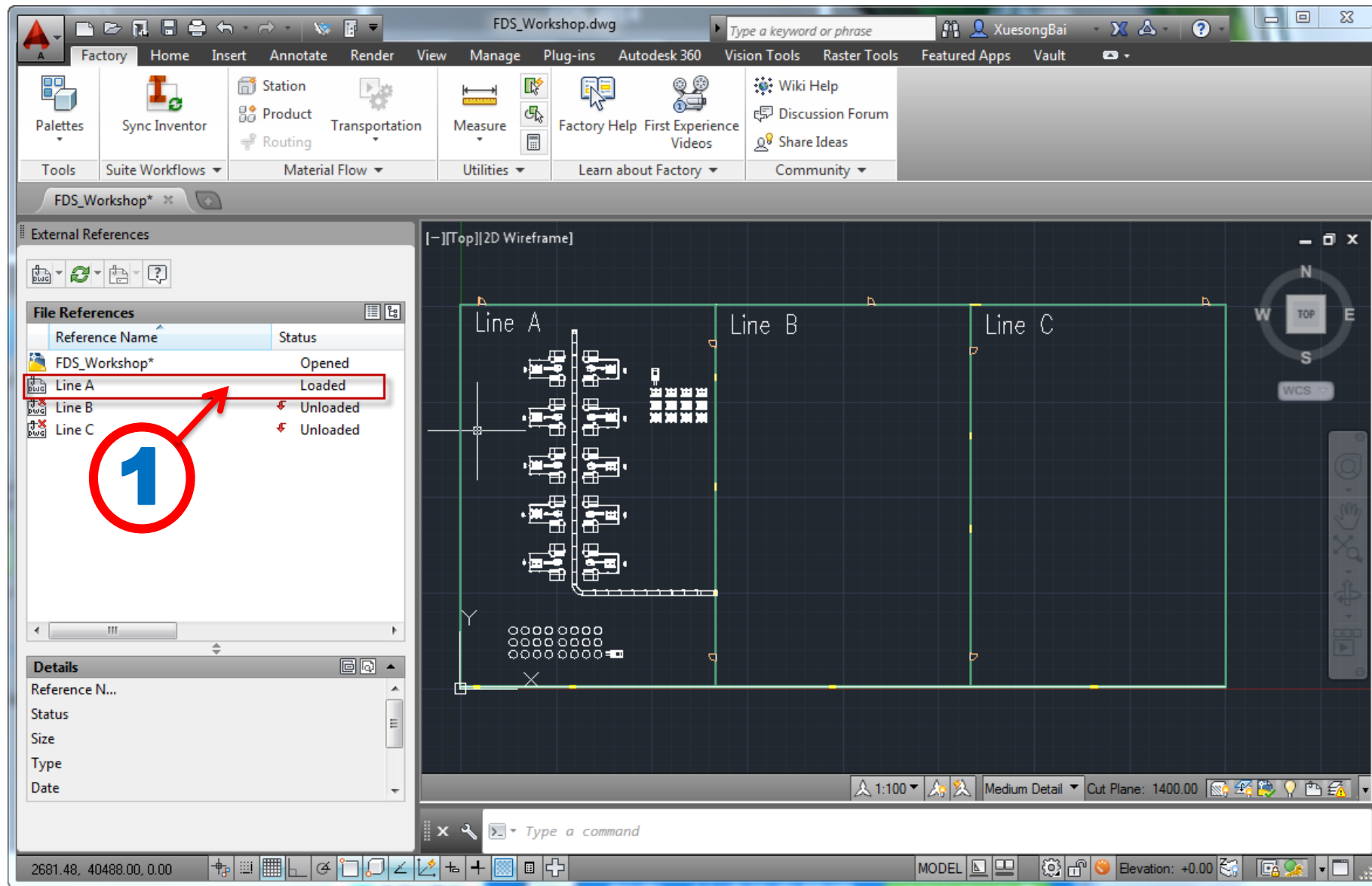
Step 4: Display and manage referenced files by XREF command



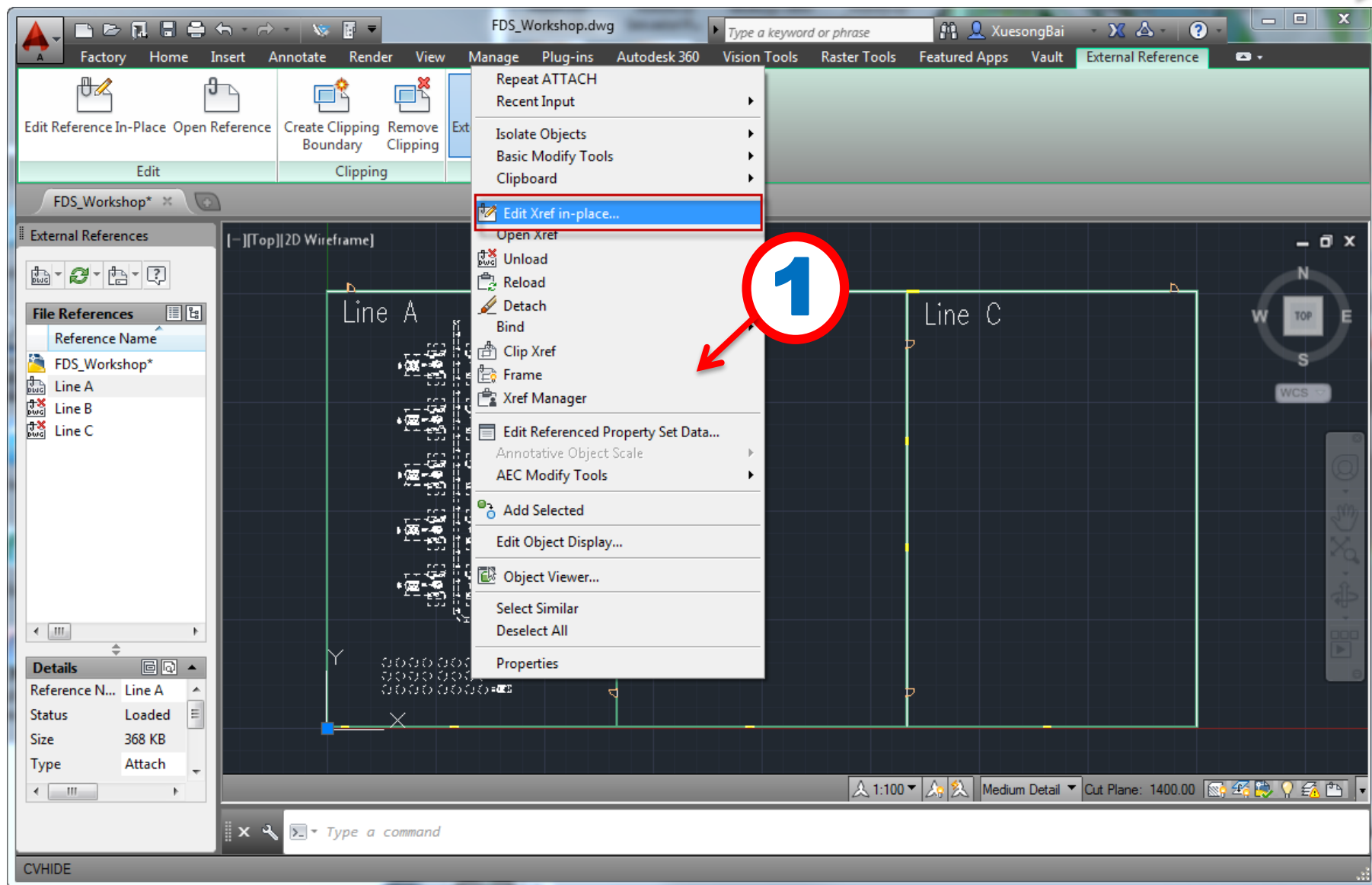
Step 5: Unload sub-layout



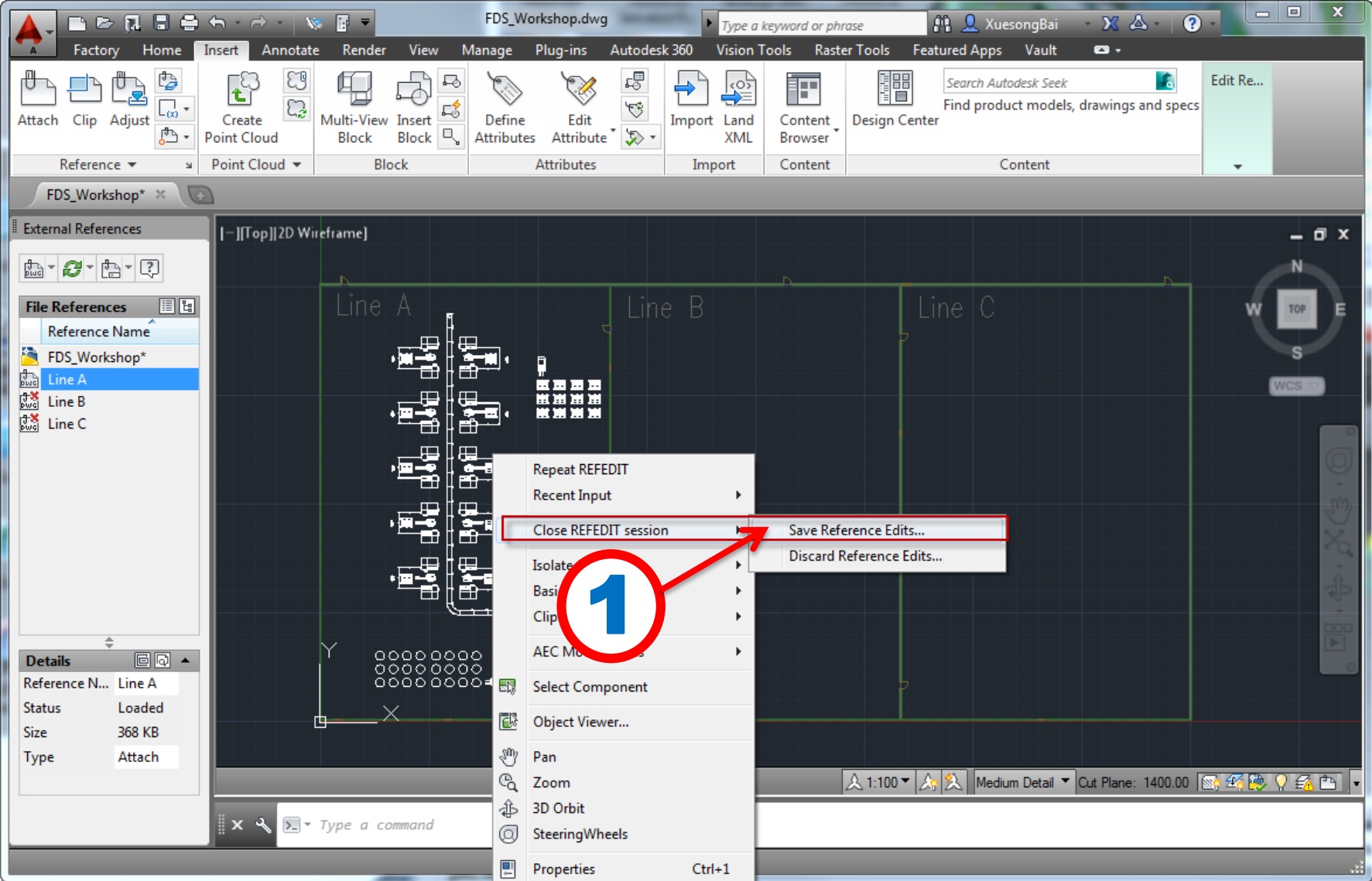
Step 6 : Retain only the ongoing sub-layout



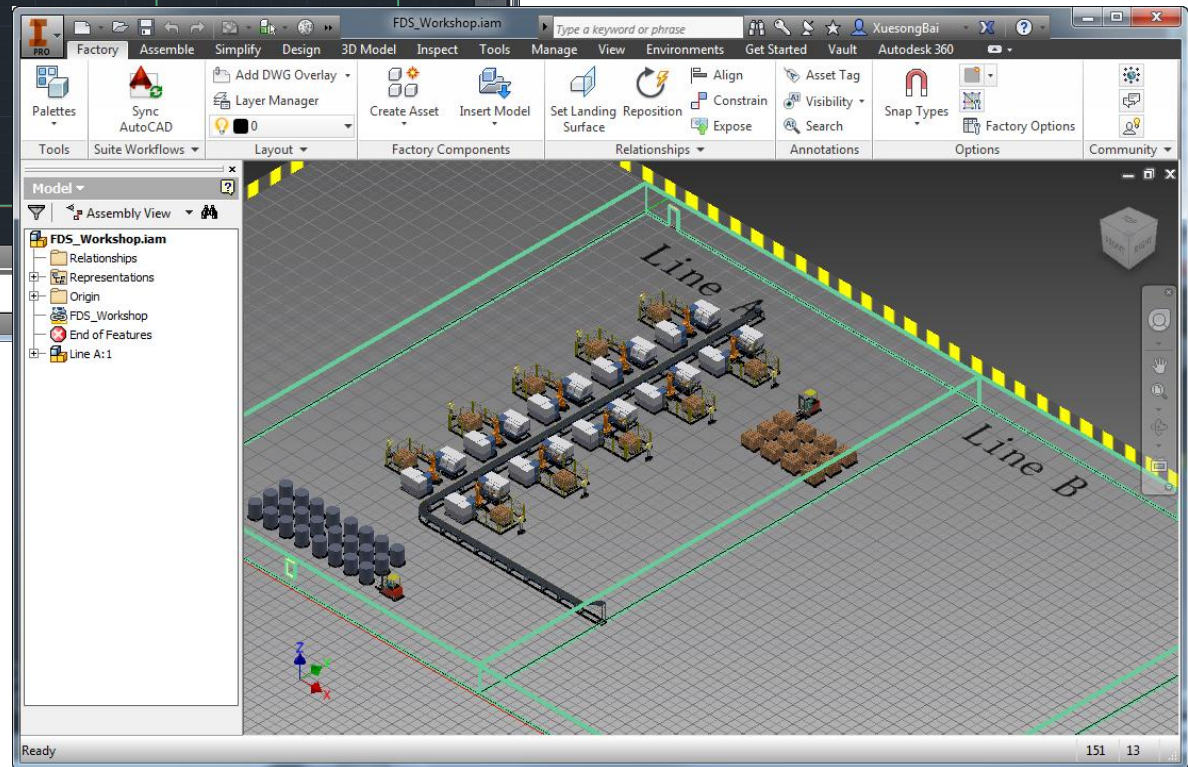
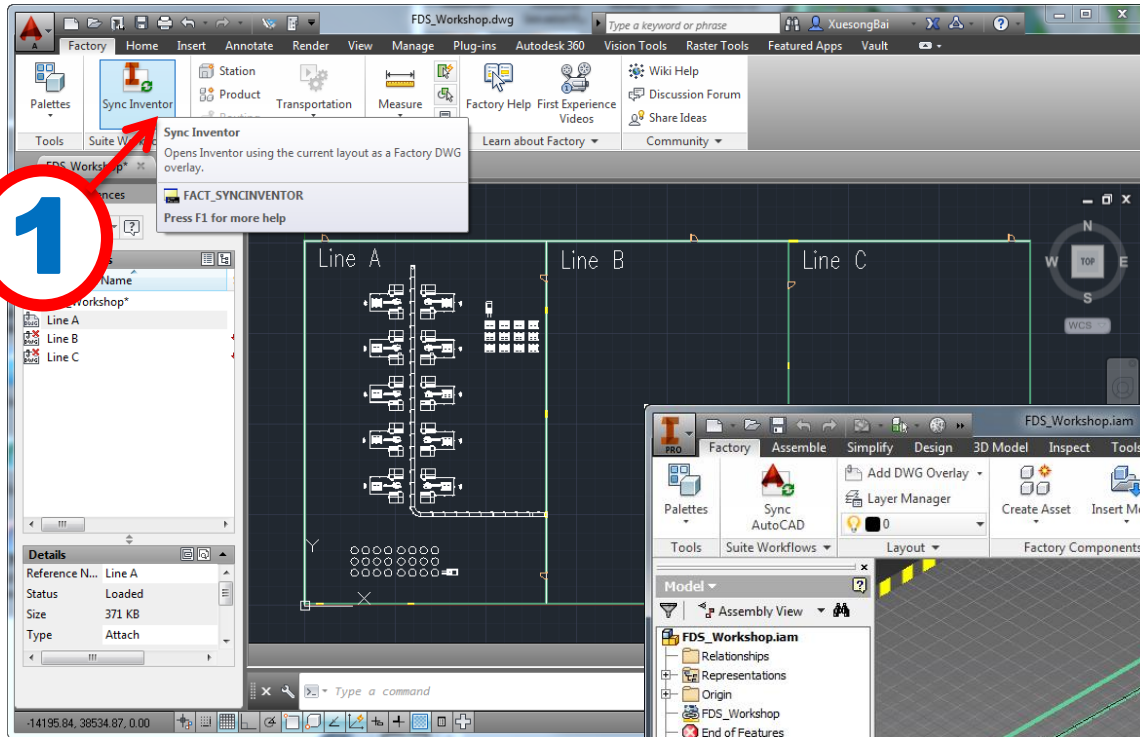
Step 7: Select “Edit Xref in-place” command to continue to complete the detailed layout design



Step 8: End the detailed layout design



Step 9 : Sync 2d/3d



✘ Repeat step 5-8 for the other sub-layouts

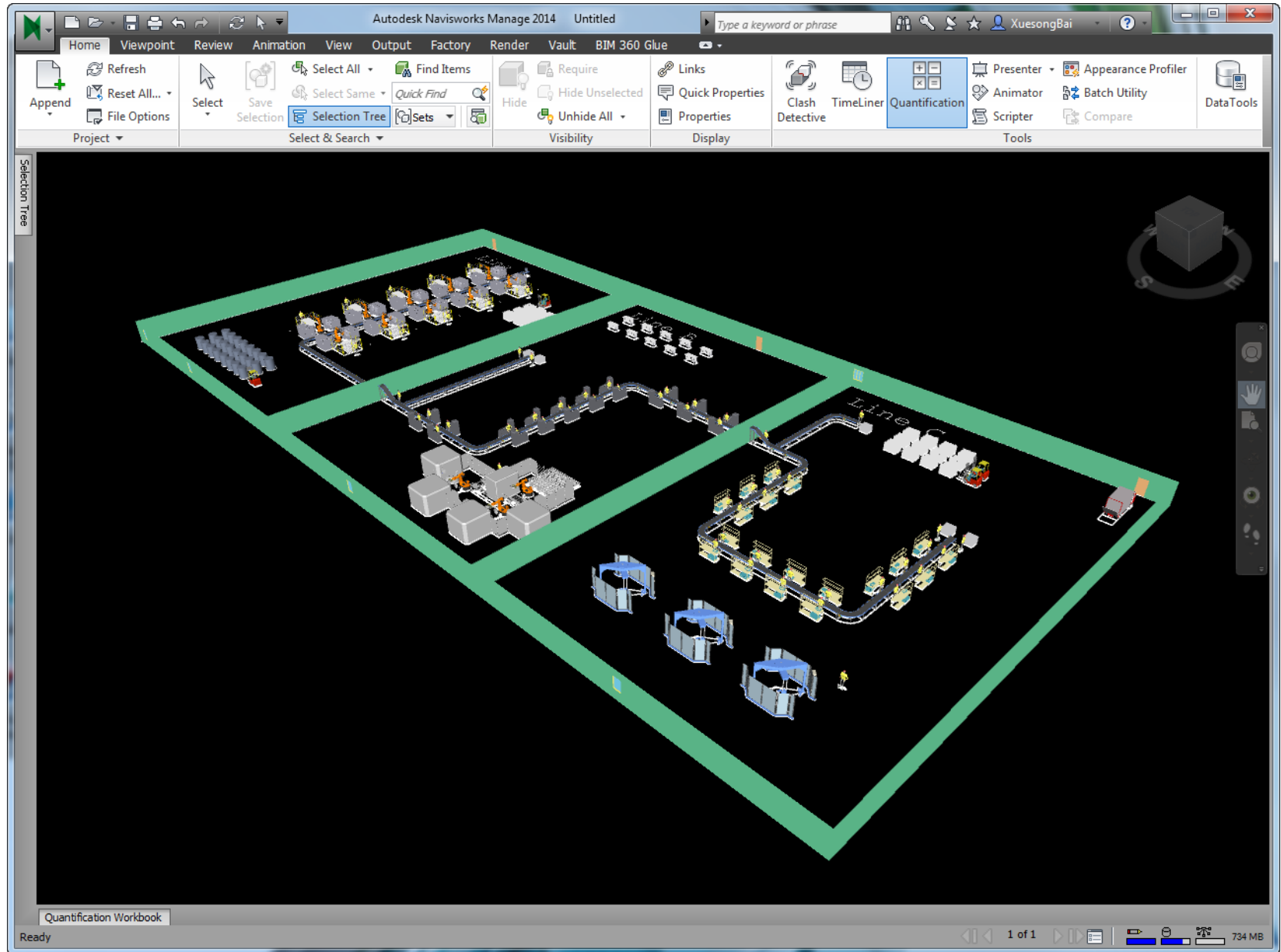
✳ Repeat step 5-9 for the other sub-layouts

The screenshot displays the AutoCAD Architecture 2014 interface. The main workspace shows a 2D wireframe layout of a building plan, divided into three sub-layouts: Line A, Line B, and Line C. The layout includes various architectural elements such as walls, doors, windows, and furniture. The interface includes a ribbon with tabs like Factory, Home, Insert, Annotate, Render, View, Manage, Plug-ins, Autodesk 360, Vision Tools, and Featured Apps. The External References panel on the left shows a list of file references, including the current drawing and three attached sub-layouts (Line A, Line B, and Line C). The Details panel at the bottom left shows the details for the selected reference, Line A. The Command Line at the bottom displays the message: "Line A_3d" is orphaned.

Reference ...	Status	Size	Type	Date
FDS_Worksh...	Open...	1,07 ...	Current	16.12.2013
Line A	Unlo...		Attach	
Line A_3d	Unref...	186 KB	Attach	16.12.2013
Line B	Load...	503 KB	Attach	16.12.2013
Line C	Load...	433 KB	Attach	16.12.2013

Reference ...	Status	Size	Type	Date
Line A	Unloaded		Attach	

Step 10 : Append All 2d/3d sub-layout into Navisworks



Thank You
for the
reading!