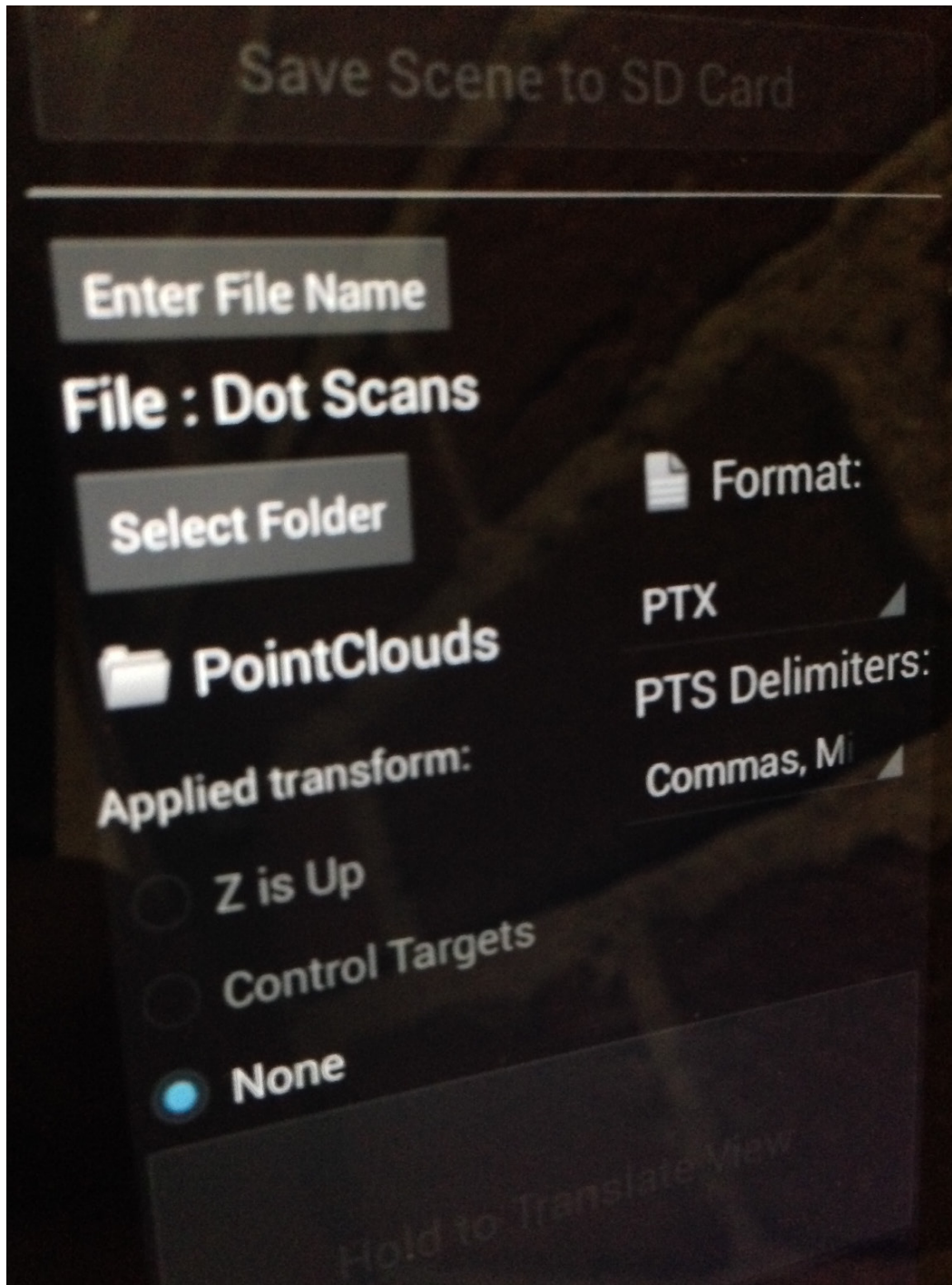


Aligning DOT product scans with other structured data in ReCap Pro

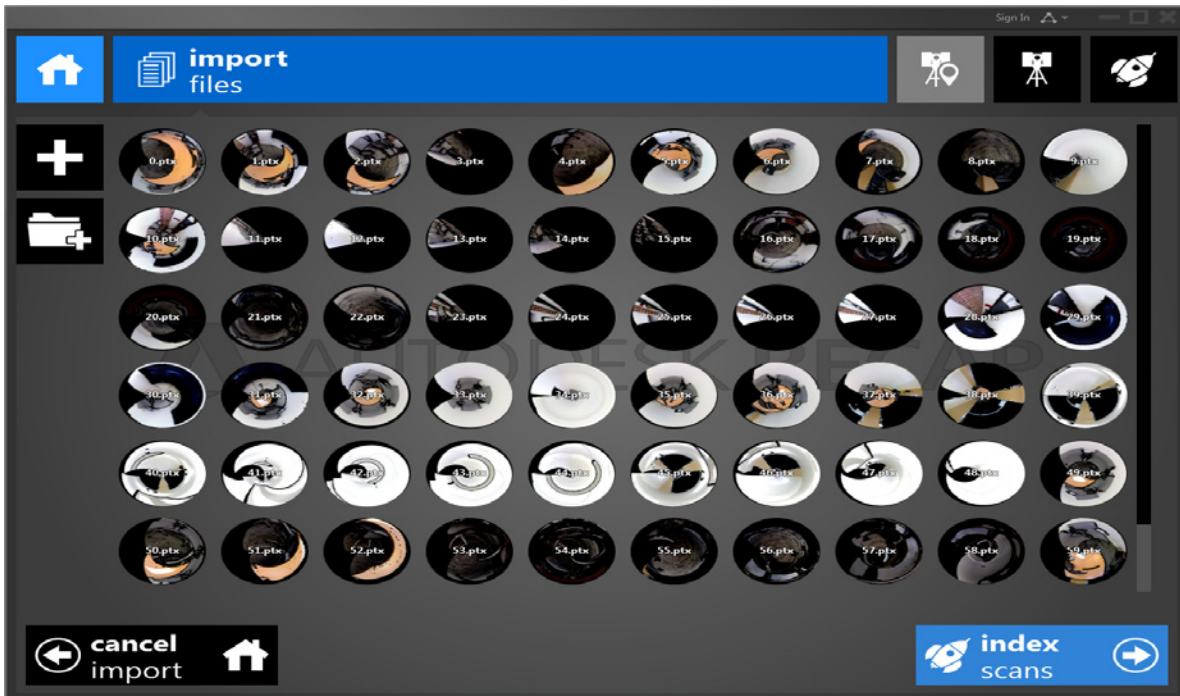
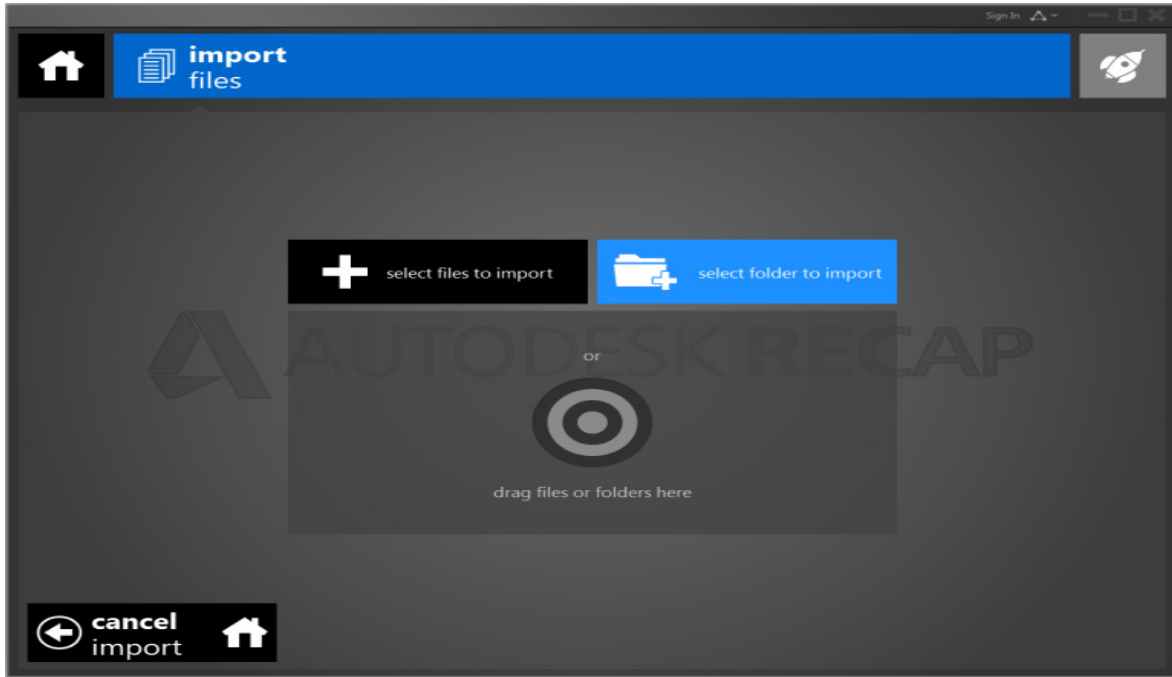
Reality Solutions Team



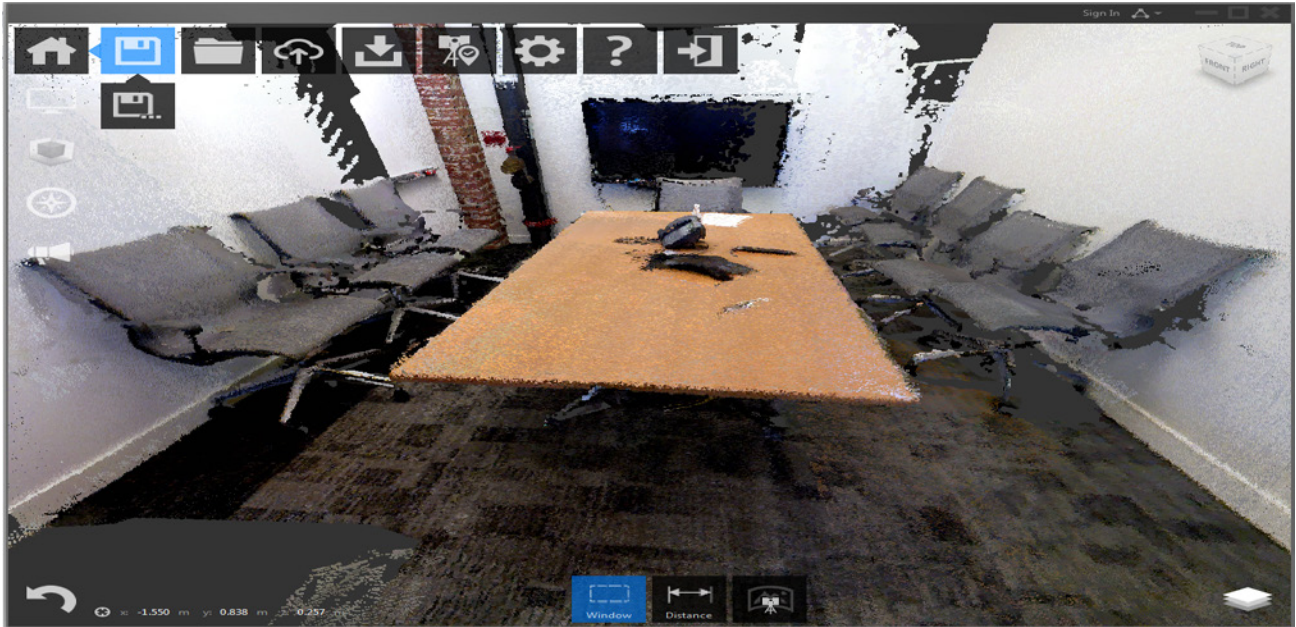
- I. Optimize and export the scene as PTX from the DOT scanner;
 - Select **"Z is Up"** if necessary;



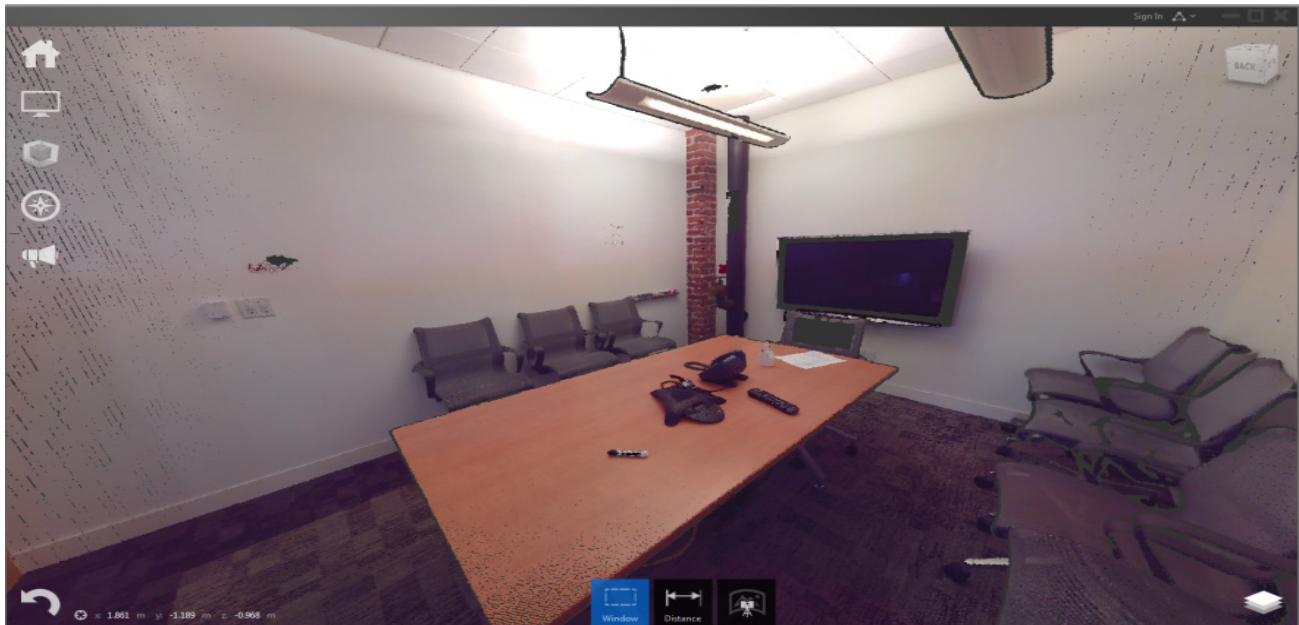
- II. Create new ReCap Project and click on **“Select Folder to Import”**;
 - Select the PTX scans folder and index your files;



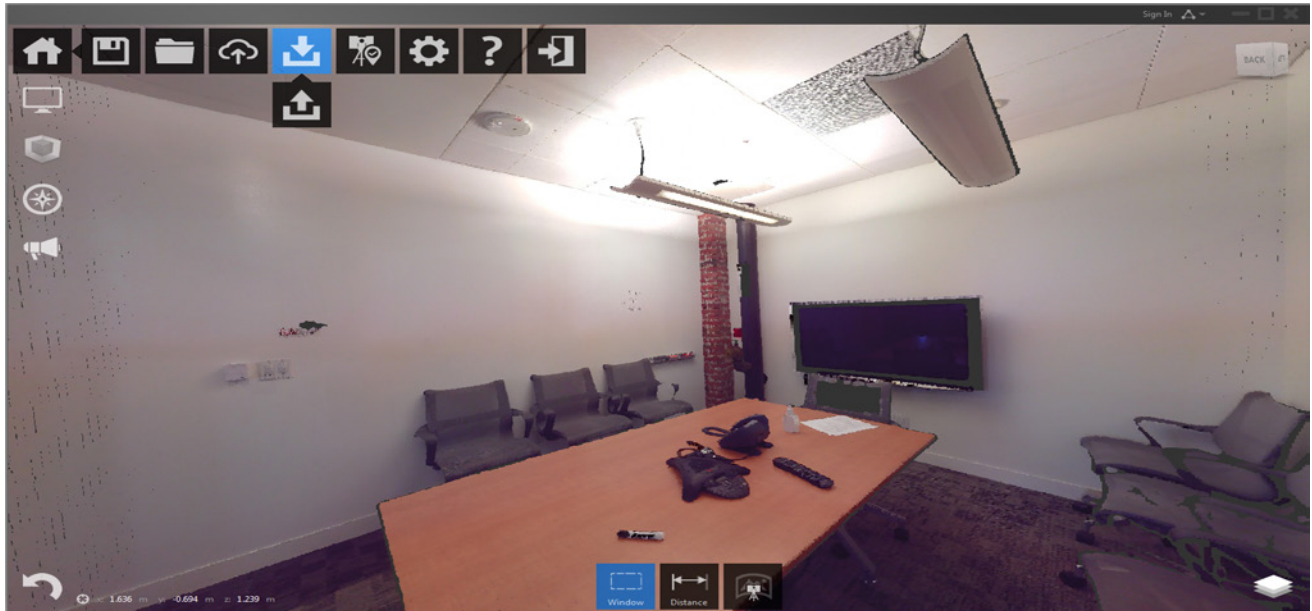
III. After index save your project in ReCap;



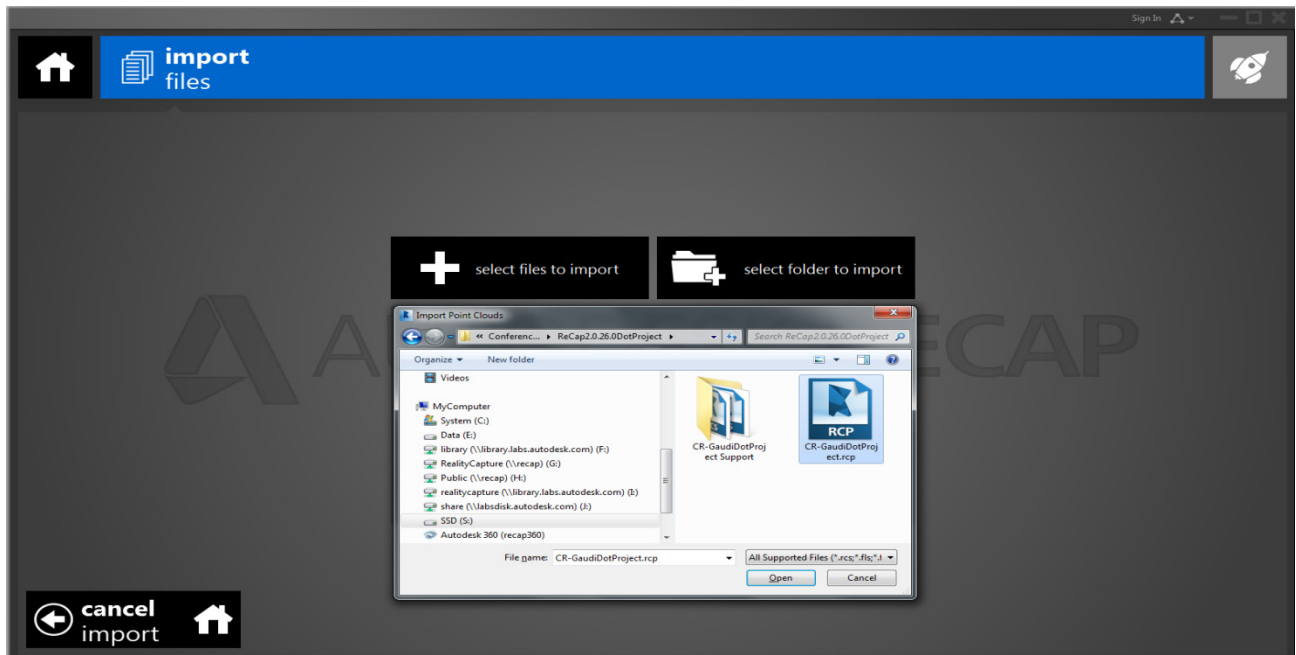
IV. Then, open the RCP project in ReCap containing the structured data;
- In this case the project with FARO Focus 3D scans;



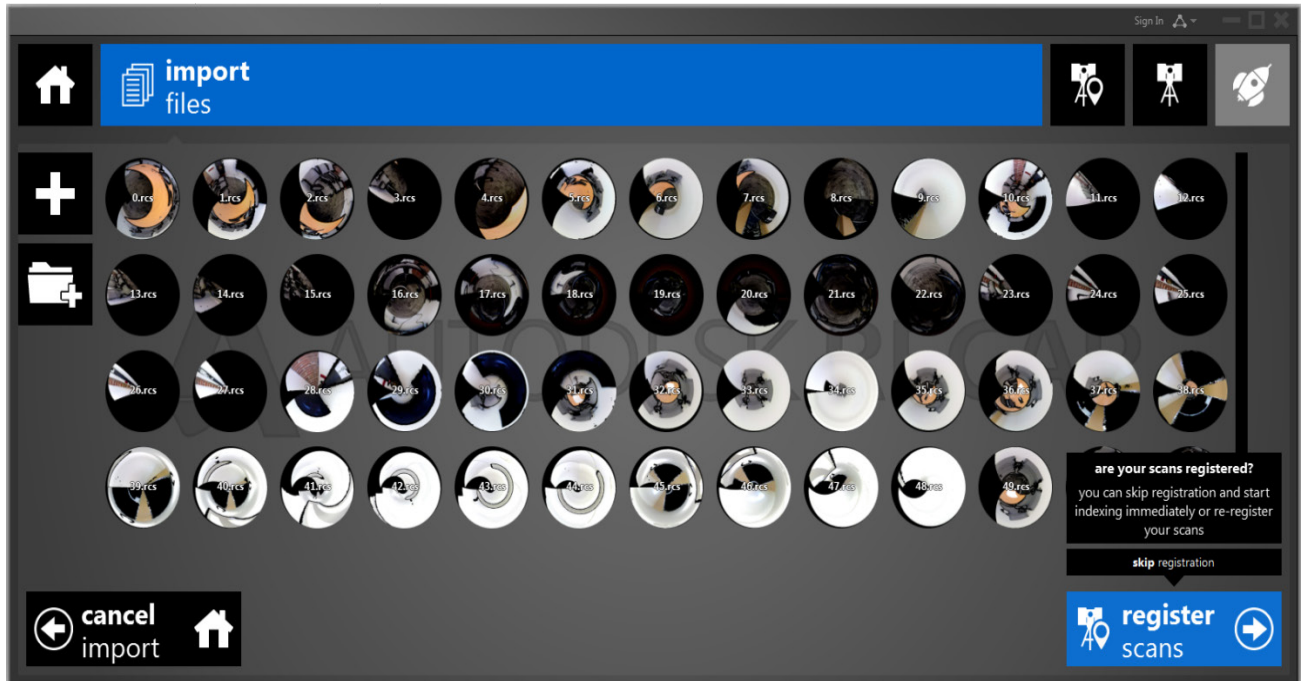
- V. Click on Home > Import;
 - To import the DOT product scans;



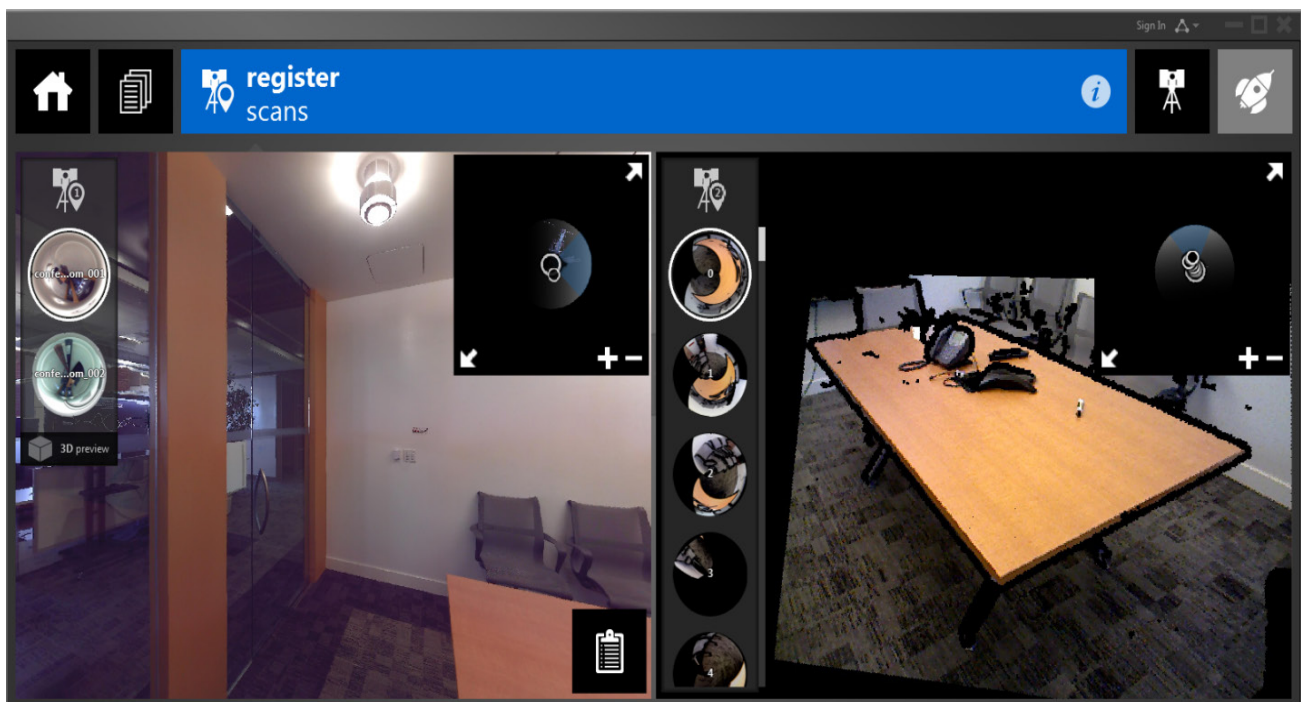
- VI. Click on **“Select file(s) to import”** and select the RCP project file with the DOT product scans;



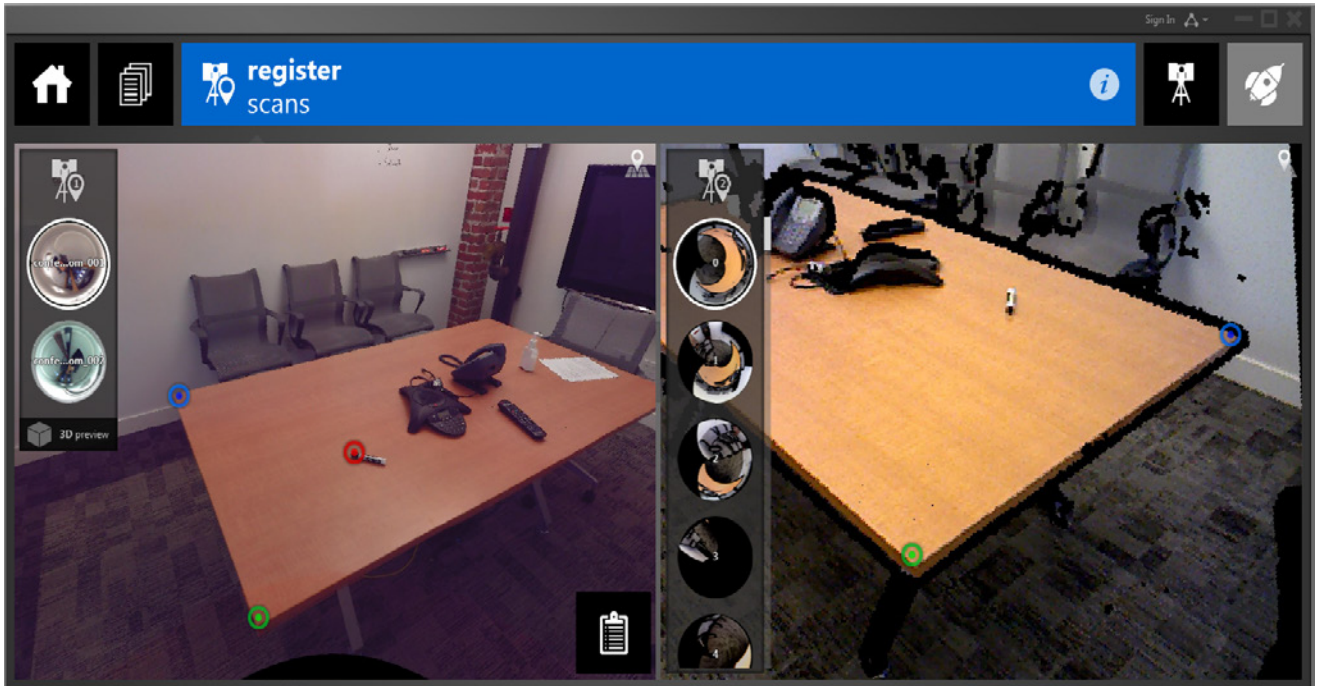
VII. Click on **“Register Scans”** to start the registration process;



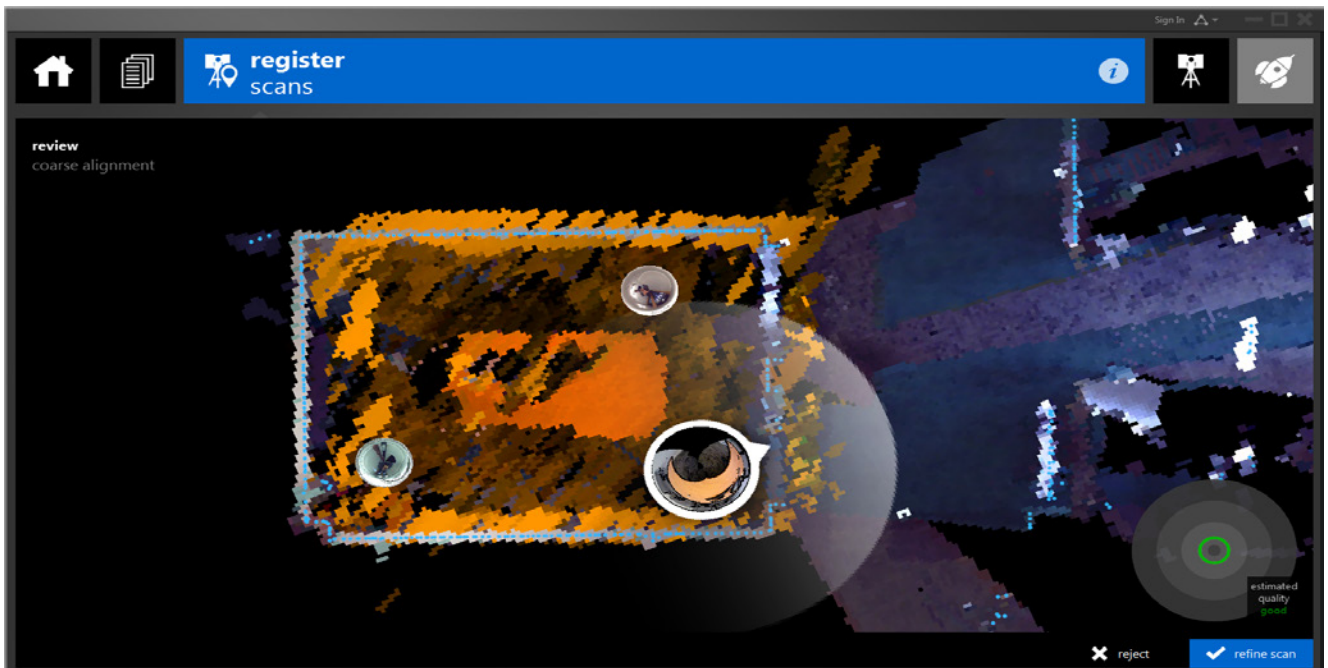
VIII. You should get 2 registration groups;



- IX. Choose the most similar views from the two registration groups and select 3 identical features;



- X. If the results are in the "Green zone", click on the "Refine Scan" button;



XI. Confirm the alignment and launch your project;

