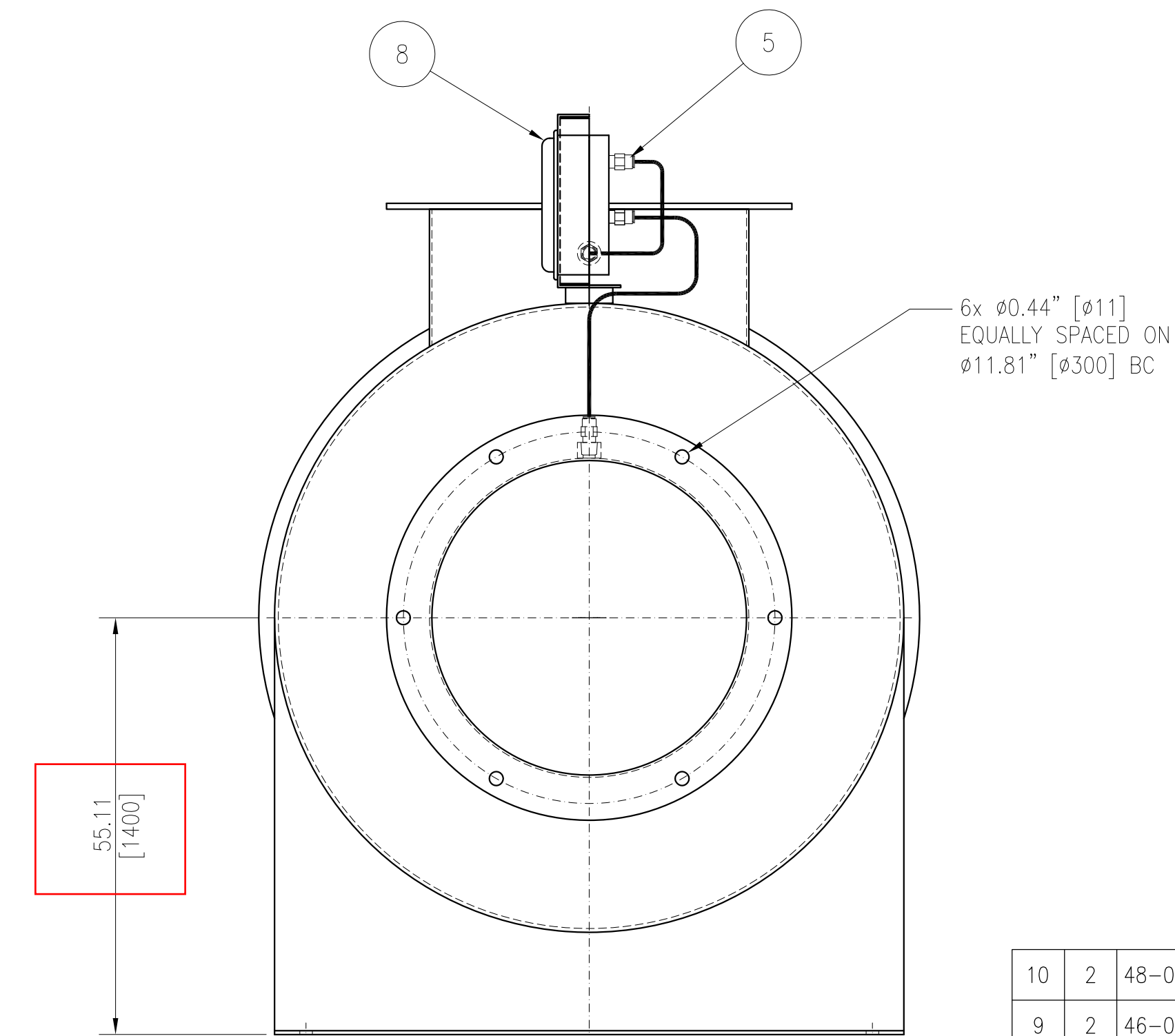
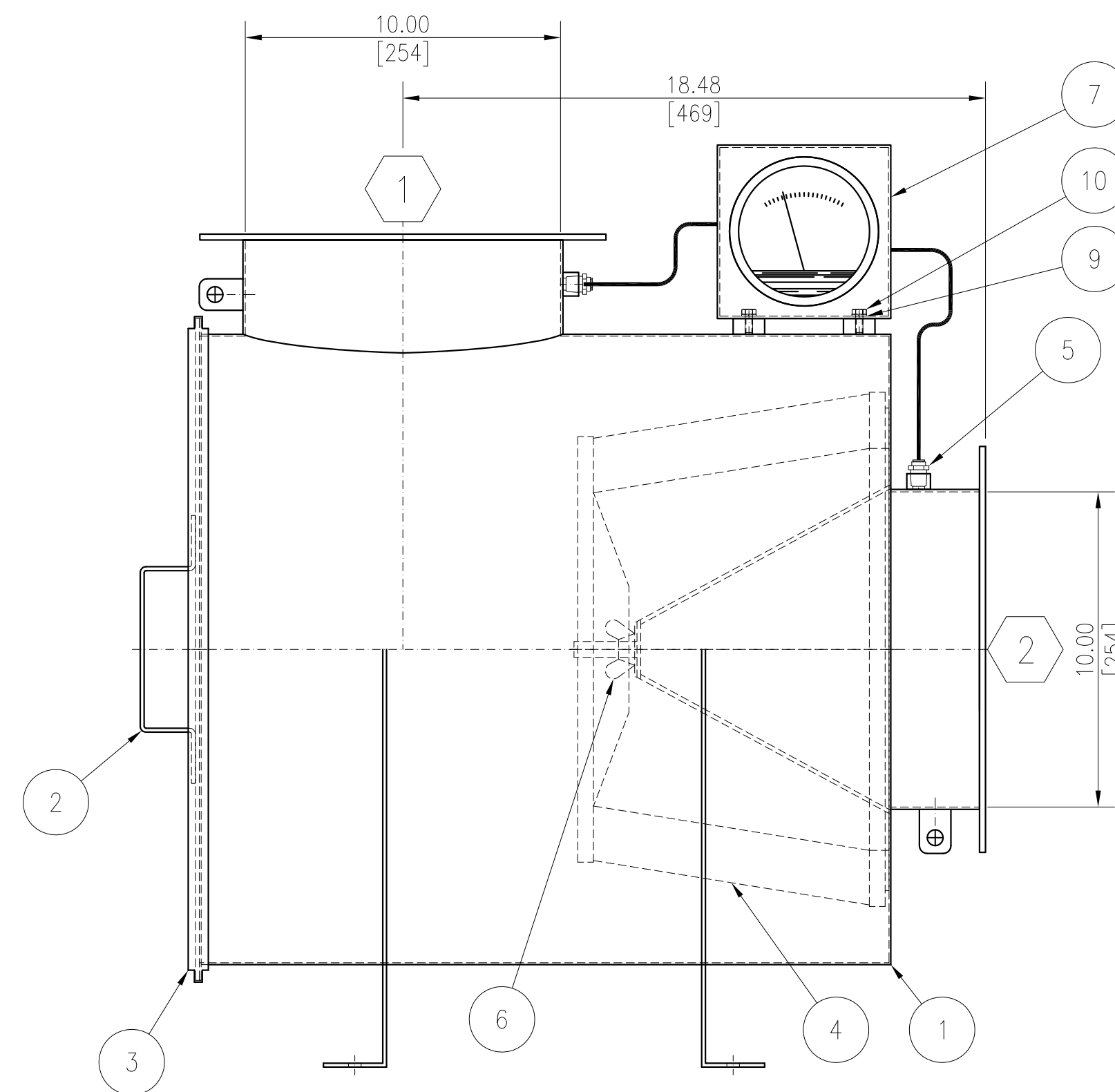
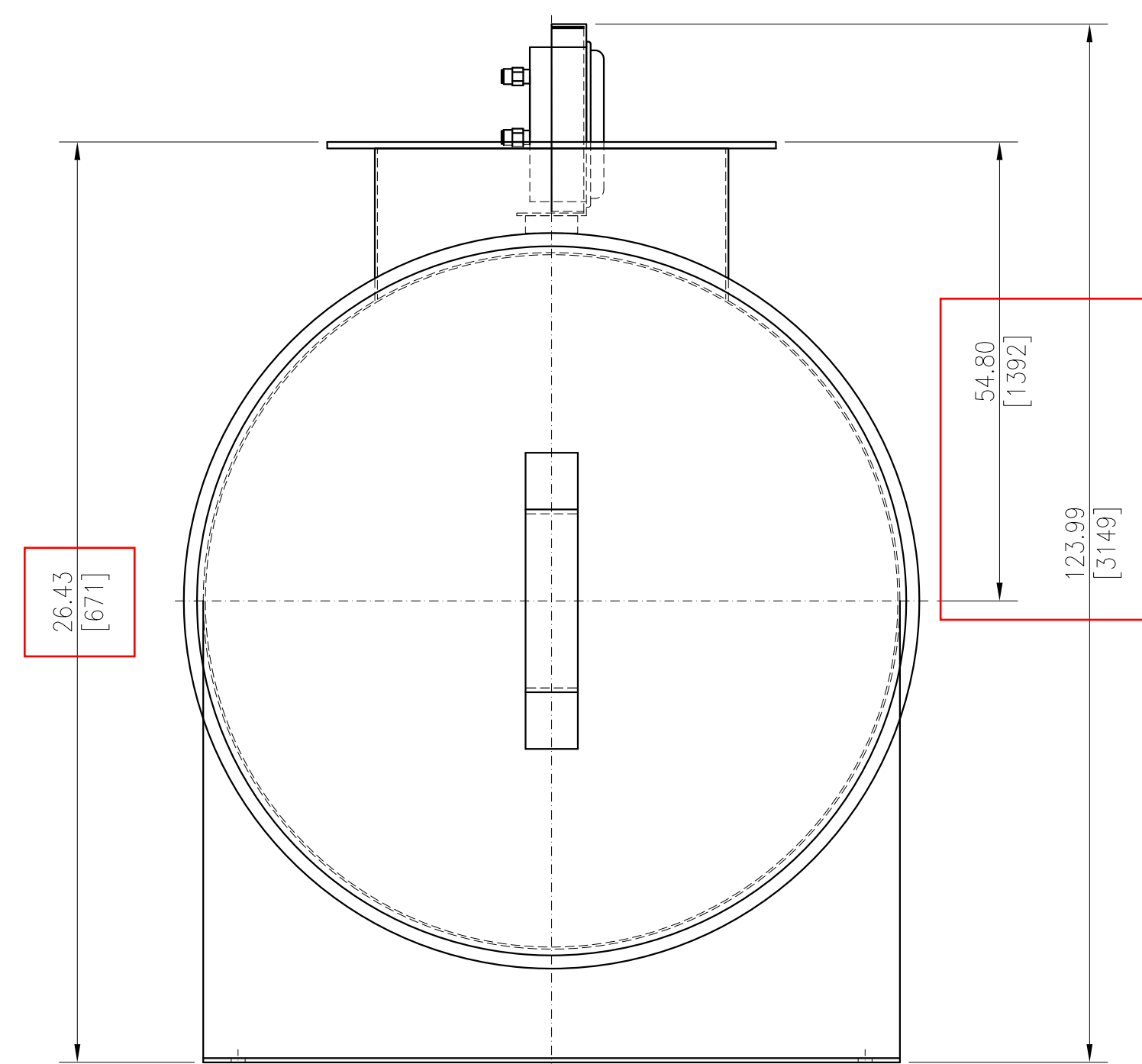
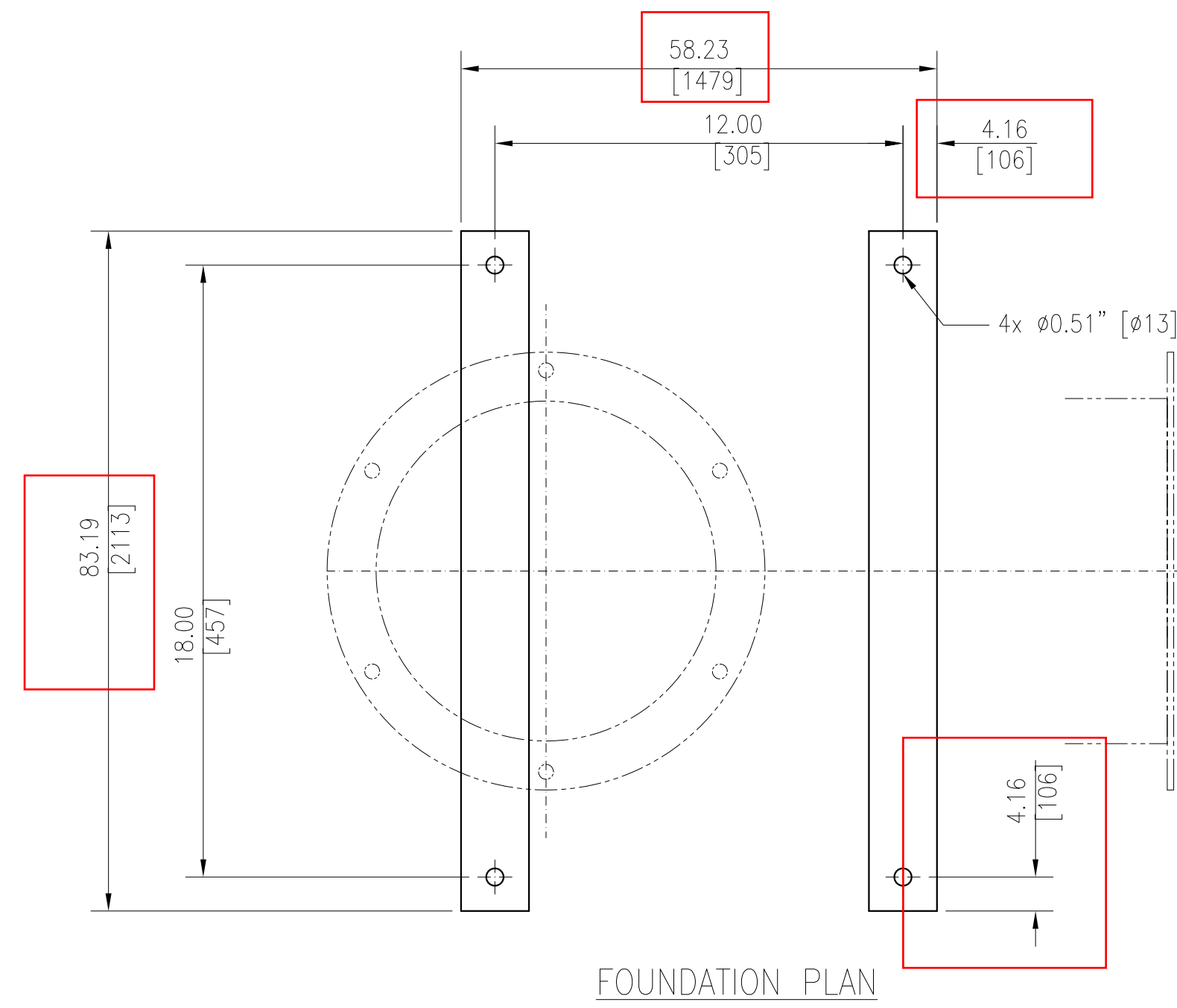


| DESIGN DATA              |   |
|--------------------------|---|
| APPLICATION              | DUST REMOVAL FROM AIR STREAM                        |
| AIR VOLUME               | 31 M <sup>3</sup> /min [1,100 ft <sup>3</sup> /min] |
| OPERATING TEMP           | AMBIENT   |
| APPROX. WEIGHT           | 55 kg [120 lb]                                      |
| FILTER TYPE              | ULTRA SYNTHETIC POLYESTER                           |
| FILTER RATING            | 3750 CFM @ 100% OF RATED FLOW                       |
| MEDIA                    | 99.97% @ 1.0 MICRON                                 |
| MATERIAL OF CONSTRUCTION | 2 mm [14 GAGE] 304 STAINLESS STEEL                  |



| TAG | TYPE         | SIZE           | APPLICATION                   |
|-----|--------------|----------------|-------------------------------|
| 2   | ROUND FLANGE | Ø10.00" [Ø250] | AIR OUTLET- DUCT RING PATTERN |
| 1   | ROUND FLANGE | Ø10.00" [Ø250] | AIR INLET- DUCT RING PATTERN  |

NOZZLE CONNECTIONS

| BASIC TOLERANCES<br>(unless otherwise marked) |                 |
|---|-----------------|
| FRACTIONAL:                                   | ± 1/16          |
| ANGULAR:                                      | ± 1 DEG         |
|   | X.XX (± 0.03)   |
|   | X.XXX (± 0.010) |

NOTE:  
 DESIGN PROTECTED BY U.S. COPYRIGHT LAWS AND UNDER PATENT NO. 7,621,975; 7,380,670; 6,595,369; 5,035,331; 6,951,354; 7,300,074; 6,032,804 AND PATENT PENDING.  
 THIS CONTENTS OF THIS DRAWING OR COPY OF THIS DRAWING IS THE SOLE PROPERTY OF PELLETRON CORPORATION AND IS ON LOAN AND SUBJECT TO RETURN UPON REQUEST. ALL CONTENTS HEREIN IS CONFIDENTIAL AND SHALL BE USED ONLY BY AUTHORIZED PERSONS.  
 REPRODUCTION OR DUPLICATION OF ANY PARTS IS PROHIBITED AND SHALL NOT BE PUT ON DISPLAY OR SHOWN TO UNAUTHORIZED PERSONS.

| NO. | DATE | DESCRIPTION | BY | APPR. | SCALE | SIZE |
|-----|------|-------------|----|-------|-------|------|
| -   | -    | -           | -  | -     | -     | -    |
|     |      | DESCRIPTION |    |       |       |      |
|     |      | REVISIONS   |    |       |       |      |

| NO | QTY | PART NO    | DESCRIPTION                      | MATERIAL |
|----|-----|------------|----------------------------------|----------|
| 10 | 2   | 48-0009-05 | HHCS: M6 X 1 X 16MM              | ZP CS    |
| 9  | 2   | 46-0007-05 | LOCK WASHER: SPLIT TYPE M6       | ZP CS    |
| 8  | 1   | 50-0001-00 | MAGNEHELIC GAUGE                 | -        |
| 7  | 1   | 50-0004-01 | GAUGE BRACKET                    | 304 SS   |
| 6  | 1   | 47-0002-07 | WING NUT M12                     | 304 SS   |
| 5  | 2   | 52-0006-08 | TUBE FITTING; 1/8 NPT x 1/4 TUBE | BRASS    |
| 4  | 1   | 33-0004-11 | FILTER ELEMENT                   |          |
| 3  | 1   | 52-0003-07 | CLAMP RING; Ø21 INCH             | 304 SS   |
| 2  | 1   | 14-0033-01 | FILTER LID, Ø21 INCH             | 304 SS   |
| 1  | 1   | 14-0052-00 | FILTER ASSEMBLY, Ø20 INCH        | 304 SS   |

| BILL OF MATERIAL |             |
|------------------|-------------|
| CHECKED          | sb          |
| DESIGNER         | DAK         |
| DATE             | 16 MAY 2013 |
| SCALE            | 1 : 4       |
| SHT NO.          | 1 OF 1      |
| SIZE             | D           |

PELLETRON CORPORATION  
 1866 COLONIAL VILLAGE LANE  
 LANCASTER, PA 17601

Ø20.00 OD 10 DUCT FLANGE ASSEMBLY

DWG. NO. 14-0051-00