

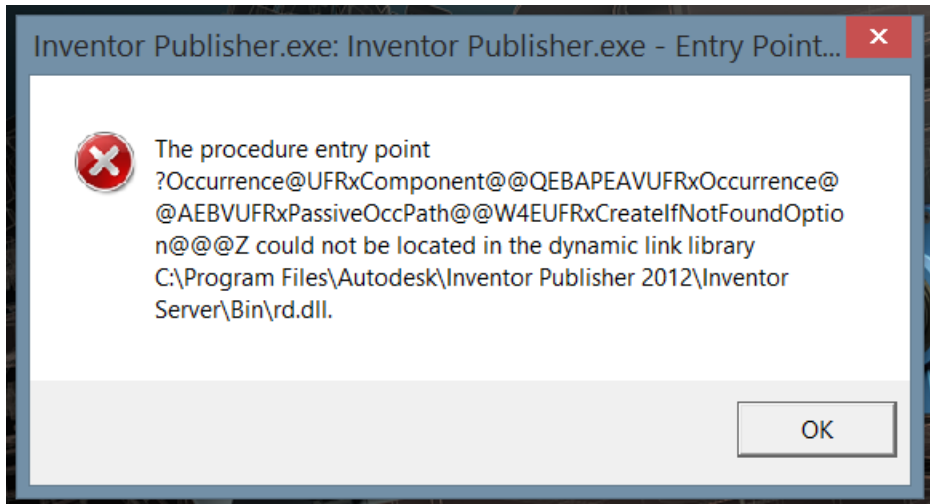
I hope this helps! Terry (tcallag@gmail.com)

1. This is the first error I got after installing INV PUB 2012 when I tried to start the program.

The screenshot shows the Microsoft Office Customization Installer window. The title bar reads "Microsoft Office Customization Installer". The main window has a header "Updating Office customization" and a sub-header "There was an error during installation." A red 'X' icon is present next to the error message. The error message states: "Name: Autodesk Inventor Publisher 2012 Word Add-in", "From: file:///C:/Program Files/Autodesk/Inventor Publisher 2012/Autodesk.Catalyst.Novastar.Plugins.WordAddin.vsto", and "File, Autodesk.Catalyst.Novastar.Plugins.WordAddin.dll, has a different computed hash than specified in manifest." Below the error message is a "Details" button and a "Close" button. The "Error Details" section shows the following text: "Name: Autodesk Inventor Publisher 2012 Word Add-in", "From: file:///C:/Program Files/Autodesk/Inventor Publisher 2012/Autodesk.Catalyst.Novastar.Plugins.WordAddin.vsto", "***** Exception Text *****", "System.Deployment.Application.InvalidDeploymentException: File, Autodesk.Catalyst.Novastar.Plugins.WordAddin.dll, has a different computed hash than specified in manifest.", "at Microsoft.VisualStudio.Tools.Applications.Deployment.ClickOnceAddInDeploymentManager.DownloadAddIn(TimeSpan timeout)", "at Microsoft.VisualStudio.Tools.Applications.Deployment.ClickOnceAddInDeploymentManager.InstallAddIn()".

iges1001.shx
iges1002.shx
iges1003.shx
ISO.shx
ITALIC8.shx
MONOTXT8.shx
SIMPLEX8.shx
spec_bar.shx
spec_sl.shx
special.shx
times.shx
timeout.shx
AcAuthEntities18enu.tlb
acETransmit18.tlb
AcSmComponents18.tlb
axdb18enu.tlb
 Autodesk.Catalyst.Novastar.Plugins.WordAddin
RegisterWordAddin
UnRegisterWordAddin
Microsoft.Office.Tools.Common.v4.0.Utilities

- This is the error you will see every time you start Inventor Publisher 2012 in Windows 8.1. Simply click OK.

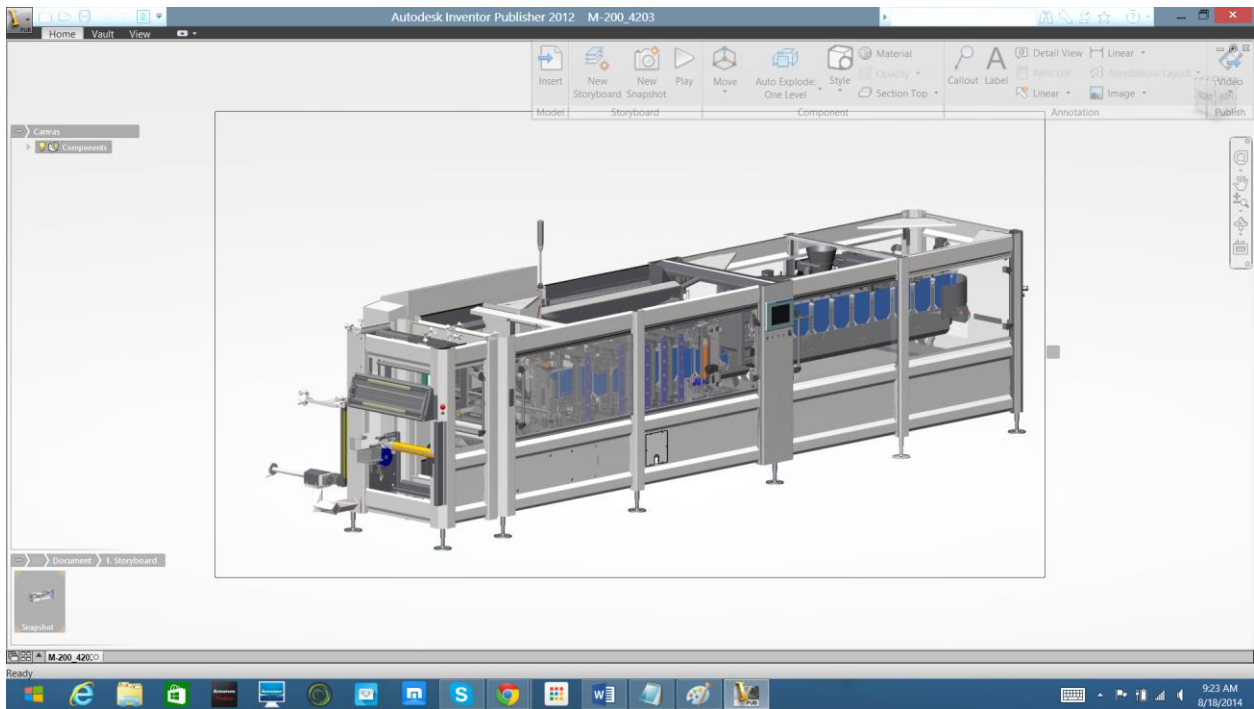
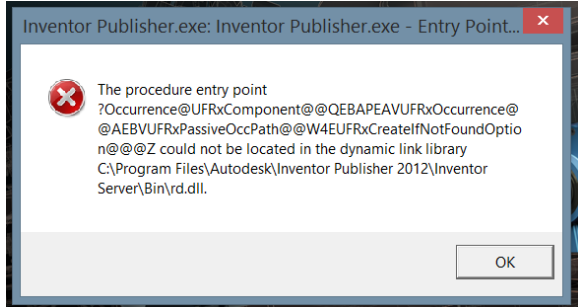


Program Files > Autodesk > Inventor Publisher 2012 > Inventor Server > Bin

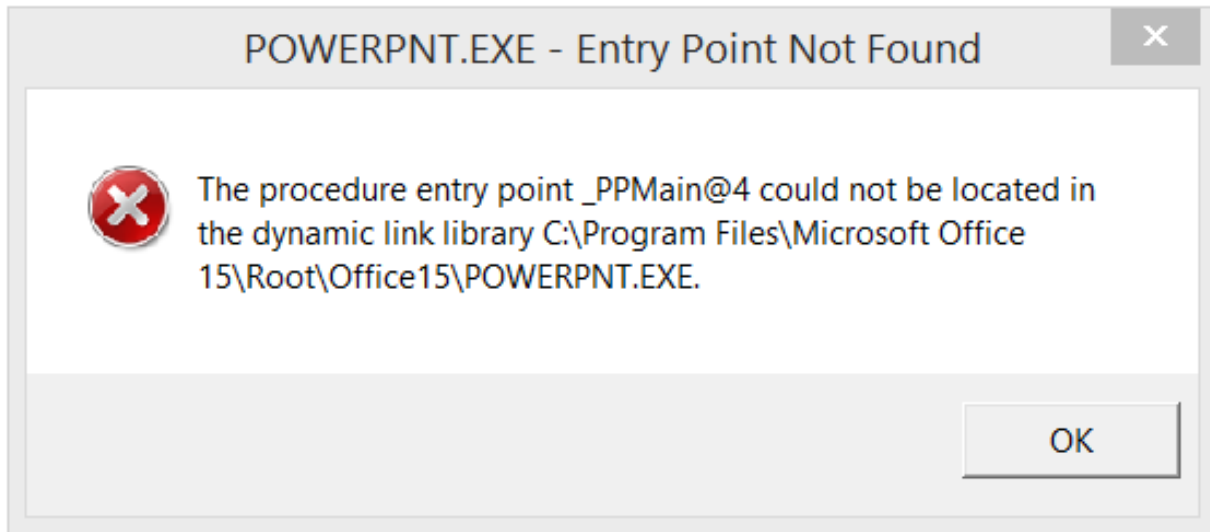
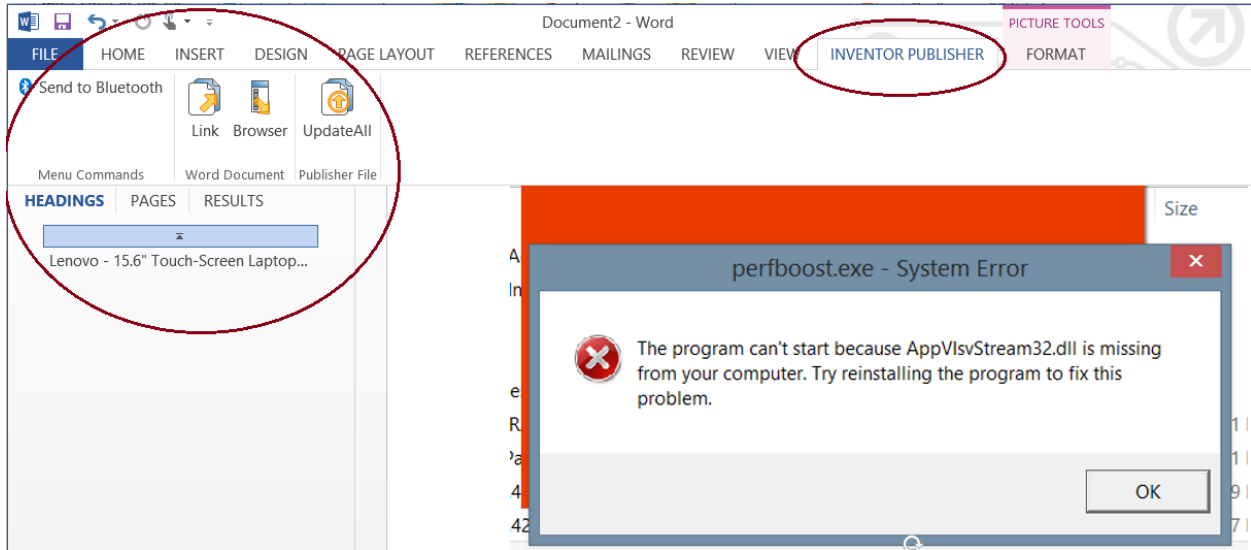
Name	Date modified	Type	Size
PSTrans.dll	2/3/2011 5:31 PM	Application extens...	313 KB
PSTransRes.dll	2/3/2011 5:31 PM	Application extens...	23 KB
psxttoolkit.dll	10/12/2010 4:56 PM	Application extens...	2,912 KB
qdca64.dll	2/3/2011 5:31 PM	Application extens...	208 KB
<input checked="" type="checkbox"/> rd.dll	2/3/2011 5:31 PM	Application extens...	14,854 KB
Rdrc.dll	2/3/2011 5:31 PM	Application extens...	67 KB
Rdrc.exe	2/3/2011 5:32 PM	Application	32 KB
Rdrc.exe	2/3/2011 5:31 PM	Application extens...	31 KB
Rdrc.exe	8/17/2014 1:08 PM	Application extens...	2,746 KB
rse.dll.org	2/3/2011 5:31 PM	ORG File	2,749 KB
RSeRes.dll	2/3/2011 5:31 PM	Application extens...	39 KB
RxAddIns.dll	2/3/2011 5:31 PM	Application extens...	166 KB
RxAppDocView.dll	2/3/2011 5:31 PM	Application extens...	1,338 KB
RxAsm.dll	2/3/2011 5:32 PM	Application extens...	326 KB

File description: Rdrc
Company: Autodesk, Inc.
File version: 16.0.15000.0
Date created: 2/3/2011 5:31 PM
Size: 14.5 MB

The same error notice may or may not appear a second time. If it does, click OK and the Inventor Publisher work window opens up with the menu skewed to the RH side of the screen. I have not found a fix for this yet. You can start a new project or import a DWF, etc. and begin working. Please take note that very large source files will lock up using INVPUB 2012 in Windows 8.1. I have found that small source files work much better. Sorry, I have not tested this “partial fix” on Windows 8.0.



Please note that INVPUB 2012 Word add-in will not work with MS Word in Office 360 per Chris' email to me. However, the add-in does seem to load into MS Word 360 as seen in the screenshots below. I have not tested this yet.



Here is the hardware set up I am using:



Lenovo - 15.6" Touch-Screen Laptop - Intel Core i7 - 8GB Memory - 1TB Hard Drive - Silver

- **Model:** LENOVO U530 TOUCH - 59427841

Height	0.9 inches
Width	15.2 inches
Depth	10.2 inches
Weight	4.9 pounds
Processor Brand	Intel®
Processor	Intel® 4th Generation Core™ i7
Processor Speed	2.0GHz (with Turbo Boost up to 2.6GHz)
Battery Type	4-cell Lithium Polymer (Li-Polymer) 2800 mAh
Display Type	HD widescreen LED touchscreen
Screen Size (Meas. Diagonally)	15.6"
Cache Memory	3MB
System Memory (RAM)	8GB
System Memory (RAM)	Expandable To: Non-expandable
Type of Memory (RAM)	DDR3L
Computer Hard Drive Size	1TB
Optical Drive	Not included
Direct-Disc Labeling	No
Digital Media Reader or Slots	Yes, digital media card reader
Graphics	NVIDIA GeForce GT 730M
Video Memory	2GB (dedicated)
TV Tuner	No
MPEG	Yes
Built-in Webcam	Yes
Modem	None
Networking	Built-in 10/100/1000 Gigabit Ethernet LAN (RJ-45 connector)
Wireless Networking	Wireless-B+G+N
Bluetooth-Enabled	Yes
S-Video Outputs	None
Audio	Dolby Home Theater v4 certification
Speakers	Internal
PCMCIA Slots	None
USB 2.0 Ports	1 USB 3.0; 2 USB 2.0
IEEE 1394 FireWire Ports	None
Parallel Ports	None
Game Ports	None
Laptop Weight	Ultraportable (5.5 lbs. or less)
Battery Life	Not available

Pointing Device	1-piece multi-touch touchpad
HDMI Output	Yes
Blu-ray Player	No
Touchscreen	Yes
Operating Sys Platform	Windows
Operating System	Windows 8.1
Operating Sys Bit Ver.	64-bit
Included Software	Amazon Kindle; Nitro PDF; Dragon Assistant and more
ENERGY STAR Certified	Yes
Best Buy PC App	No
Graphics Chip	NVIDIA
Backlit Keyboard	Yes
Drive Capacity	1TB
Graphics Card	NVIDIA GeForce GT 730M
Wireless Display	Yes
Gaming Series	Yes
EPEAT Qualified	Yes