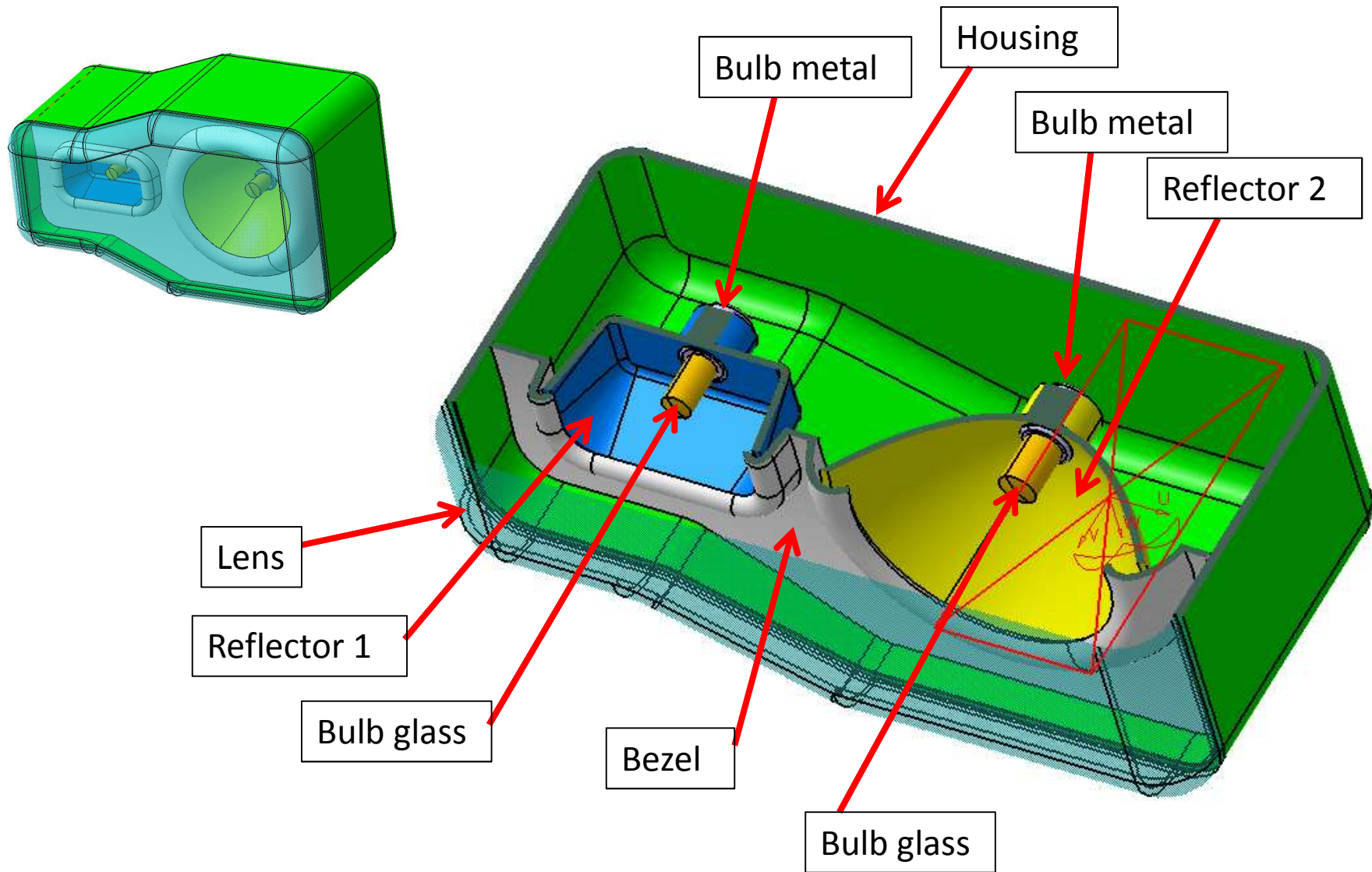
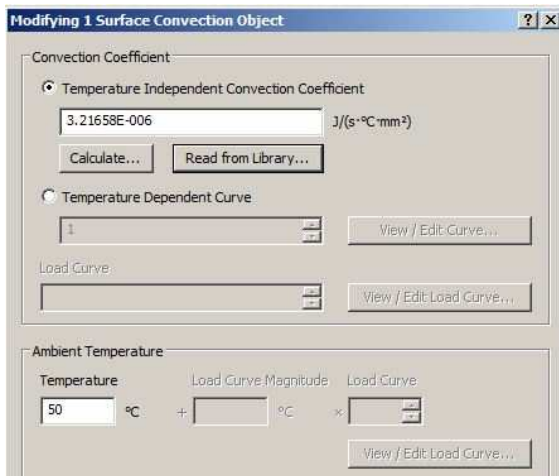


## Simplified headlamp assembly

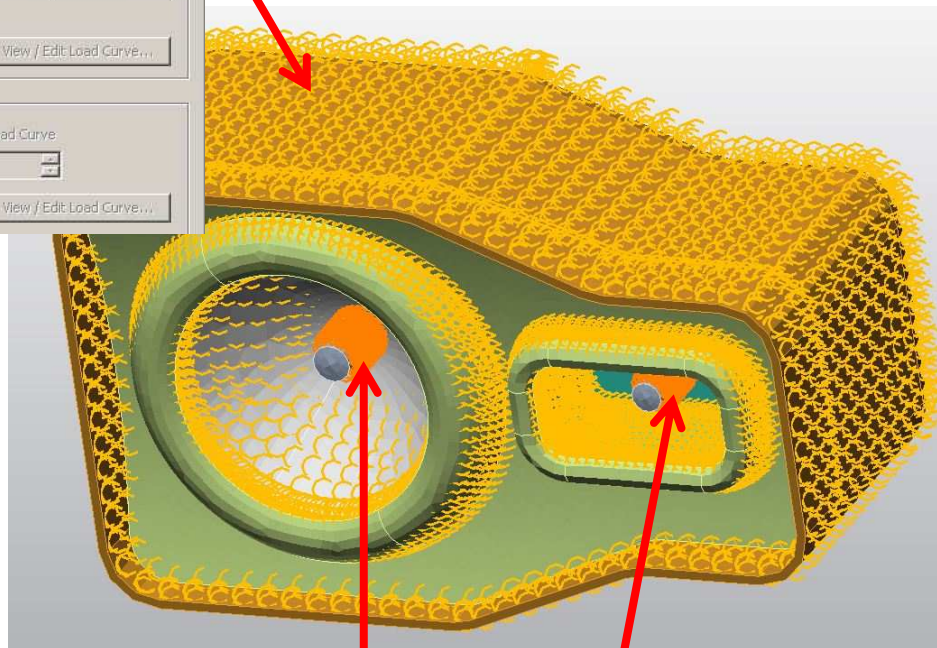


# Settings at Autodesk Simulation Mechanical

## Materials



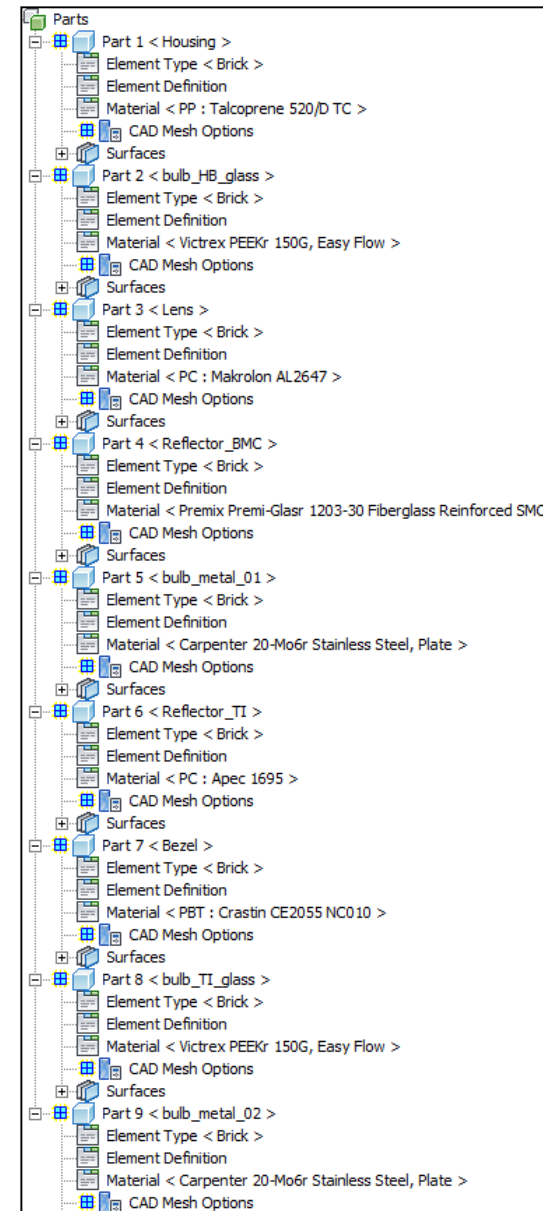
Surface convectional loads applied on all parts surfaces except glass parts of bulbs



Lens is not visible here

Heat generation = **0.06** J/(mm<sup>3</sup>\*s) set to glass part of bulb (1.1 cm<sup>3</sup>)

Heat generation = **0.03** J/(mm<sup>3</sup>\*s) set to glass part of bulb (0.7 cm<sup>3</sup>)



## Temperature result - Autodesk Simulation Mechanical

