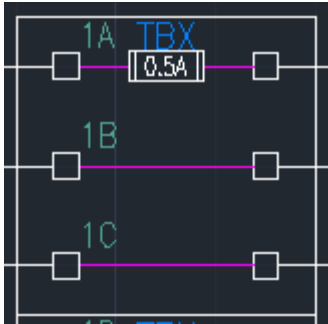
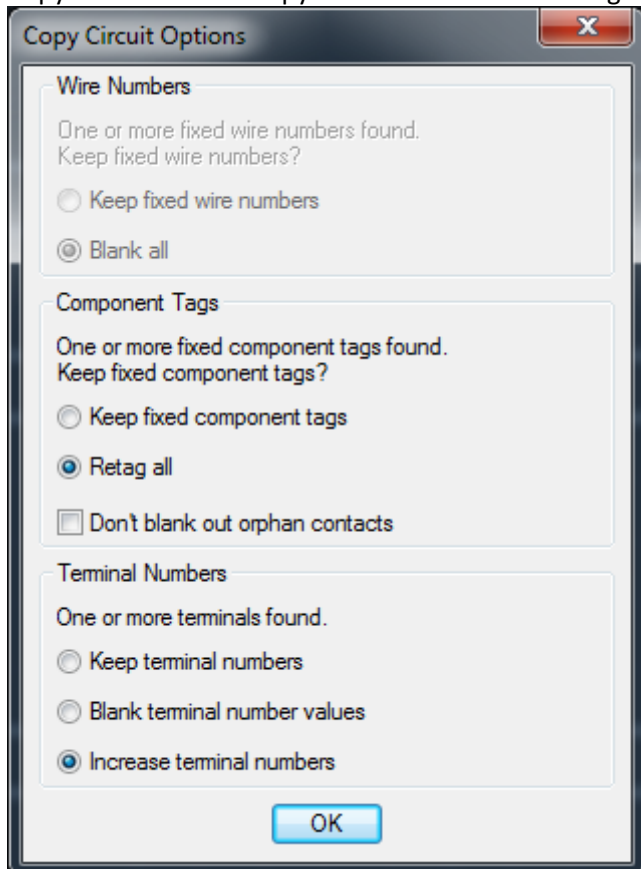


How to copy a circuit with terminals that are multi-level and have it increment the base # rather than the letter?

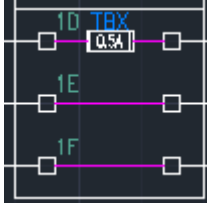
Beginning: I have a saved circuit comprised of three associated terminals that represent a single, three-level terminal. 1A is the top, 1B is the middle, 1C is the bottom. I like to draw a representation of the actual block (in this case it is a fused Phoenix Contact terminal). All of the associations are set up already for the levels.



Copy circuit: When I copy the circuit and insert it again, I tell it to increase terminal numbers.



Result: It copies the circuit but it increments the letters instead of the numbers. What I would prefer the output to be is 2A, 2B, 2C. Instead I get 1D, 1E, 1F.



But they do retain their level associations:

