



1. Select I/O Point

2. Pull up External File

3. Find and Select Row in File Matching I/O Point's Info

Edit PLC Module

Addressing
 First address: I:0103-00
 List: I:0103-00, I:0103-01, I:0103-02, I:0103-03, **I:0103-04**, I:0103-05, I:0103-06, I:0103-07
 Used: Drawing, Project

Tag
 fixed
 Options

Line1: RACK 01
 Line2: SLOT 03
 Manufacturer: AB
 Catalog: 1756-IA32
 Assembly:
 Catalog Lookup

Description: 120VAC 32-PT DIGITAL

I/O Point Description
 Address: I:0103-04 I/O point (5 of 16)
 Desc 1-5:
 Next Pick Pick device to capture Desc text

List descriptions: I/O Wired Devices **External File**

Installation/Location codes
 Installation: Location: Pins: Pin 1: 5 IN-4
 Pin 2:
 Drawing Drawing Show/Edit Miscellaneous
 Project Project Ratings

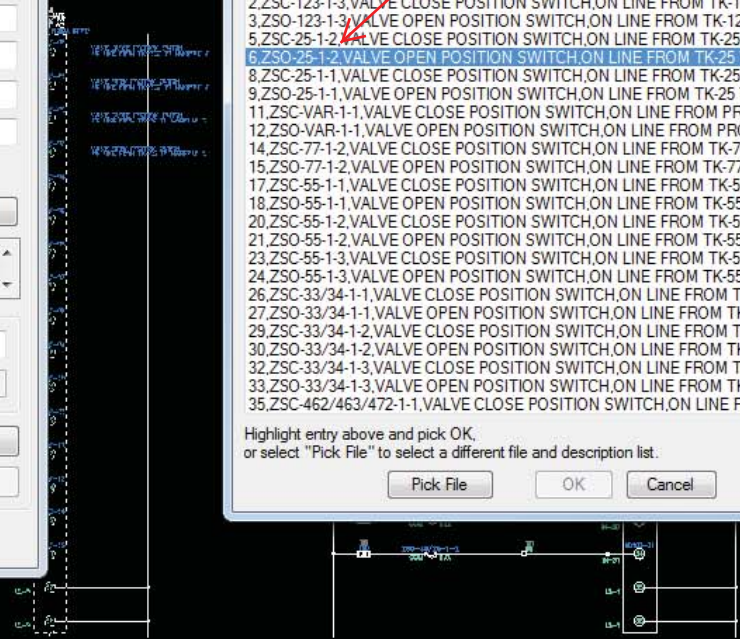
OK Cancel Help

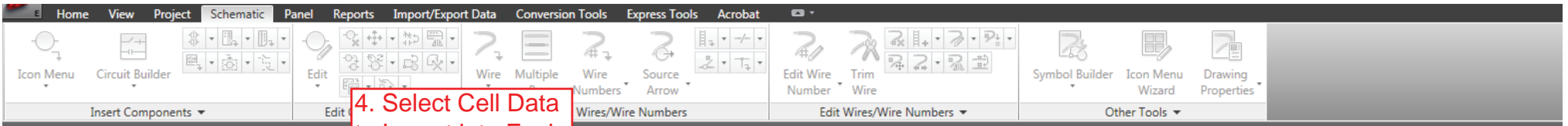
Select PLC annotation for I/O address: I:0103-04

ITEM #	TAG	DESCRIPTION	EQUIPMENT	I/O TYPE	RACK	SLOT	CHAN
2	ZSC-123-1-3	VALVE CLOSE POSITION SWITCH	ON LINE FROM TK-123 TO MANIF				
3	ZSO-123-1-3	VALVE OPEN POSITION SWITCH	ON LINE FROM TK-123 TO MANIF				
5	ZSC-25-1-2	VALVE CLOSE POSITION SWITCH	ON LINE FROM TK-25 TO MANIFOL				
6	ZSO-25-1-2	VALVE OPEN POSITION SWITCH	ON LINE FROM TK-25 TO MANIFOL				
8	ZSC-25-1-1	VALVE CLOSE POSITION SWITCH	ON LINE FROM TK-25 TO MANIFOL				
9	ZSO-25-1-1	VALVE OPEN POSITION SWITCH	ON LINE FROM TK-25 TO MANIFOL				
11	ZSC-VAR-1-1	VALVE CLOSE POSITION SWITCH	ON LINE FROM PRODUCT FROI				
12	ZSO-VAR-1-1	VALVE OPEN POSITION SWITCH	ON LINE FROM PRODUCT FROM				
14	ZSC-77-1-2	VALVE CLOSE POSITION SWITCH	ON LINE FROM TK-77 TO MANIFO				
15	ZSO-77-1-2	VALVE OPEN POSITION SWITCH	ON LINE FROM TK-77 TO MANIFO				
17	ZSC-55-1-1	VALVE CLOSE POSITION SWITCH	ON LINE FROM TK-55 TO MANIFO				
18	ZSO-55-1-1	VALVE OPEN POSITION SWITCH	ON LINE FROM TK-55 TO MANIFO				
20	ZSC-55-1-2	VALVE CLOSE POSITION SWITCH	ON LINE FROM TK-55 TO MANIFO				
21	ZSO-55-1-2	VALVE OPEN POSITION SWITCH	ON LINE FROM TK-55 TO MANIFO				
23	ZSC-55-1-3	VALVE CLOSE POSITION SWITCH	ON LINE FROM TK-55 TO MANIFO				
24	ZSO-55-1-3	VALVE OPEN POSITION SWITCH	ON LINE FROM TK-55 TO MANIFO				
26	ZSC-33/34-1-1	VALVE CLOSE POSITION SWITCH	ON LINE FROM TK-33/34 TO M				
27	ZSO-33/34-1-1	VALVE OPEN POSITION SWITCH	ON LINE FROM TK-33/34 TO M				
29	ZSC-33/34-1-2	VALVE CLOSE POSITION SWITCH	ON LINE FROM TK-33/34 TO M				
30	ZSO-33/34-1-2	VALVE OPEN POSITION SWITCH	ON LINE FROM TK-33/34 TO M				
32	ZSC-33/34-1-3	VALVE CLOSE POSITION SWITCH	ON LINE FROM TK-33/34 TO M				
33	ZSO-33/34-1-3	VALVE OPEN POSITION SWITCH	ON LINE FROM TK-33/34 TO M				
35	ZSC-462/463/472-1-1	VALVE CLOSE POSITION SWITCH	ON LINE FROM TK-462				

Highlight entry above and pick OK,
 or select "Pick File" to select a different file and description list.

Pick File OK Cancel





4. Select Cell Data to Import into Each Description Line

Edit PLC Module

Addressing

First address: I:0103-00

I/O Point Description

Address: I:0103-04 I/O point (5 of 16)

Desc 1:
 Desc 2:
 Desc 3:
 Desc 4:
 Desc 5:

Next Pick Pick device to capture Desc text

List descriptions: I/O Wired Devices External File

VALVE CLOSE POSITION SWITCH ON LINE FROM TK-123 TO MANIFOLD 3
 VALVE OPEN POSITION SWITCH ON LINE FROM TK-123 TO MANIFOLD 3
 VALVE CLOSE POSITION SWITCH ON LINE FROM TK-25 TO MANIFOLD 2

Installation/Location codes

Installation: Location: Pins

Pin 1: 5 IN-4

Pin 2:

 Show/Edit Miscellaneous

Ratings

OK Cancel Help

I/O Point annotation for address: I:0103-04

Choices

8 ZSC-25-1-1 VALVE CLOSE POSITION SV ON LINE FROM TK-25 TO M

DI

1 >> Desc1 VALVE CLOSE POSITION SWITCH

3 >> Desc2 ON LINE FROM TK-25 TO MANIFOLD 1

4 >> Desc3

>> Desc4

>> Desc5

>> This I/O point's addr: I:0103-04

Overall module

>> 1st Addr: I:0103-00

>> Tag:

>> Line1: RACK 01

>> Line2: SLOT 03

>> MFG: AB

>> CAT: 1756-IA32

>> ASM:

>> Desc: 120VAC 32-PT DIGITAL INPUT

>> Loc:

>> Inst:

OK Cancel

1. Copy

The image shows a software interface for editing PLC modules. On the left, a dialog box titled "Edit PLC Module" is open, showing "I/O Point Description" for address 10105-04. The description field contains "VALVE CLOSE POSITION SWITCH". A red arrow points from the "1. Copy" label to this text. On the right, a table lists various I/O points. A red arrow points from the "2. Paste" label to the description "VALVE CLOSE POSITION SWITCH" in row 18 of the table.

ITEM	TAG	DESCRIPTION	EQUIPMENT
1			
2	ZSC-123-1-3	VALVE CLOSE POSITION SWITCH	ON LINE FROM TK-123 TO MANIFOLD 3
3	ZSO-123-1-3	VALVE OPEN POSITION SWITCH	ON LINE FROM TK-123 TO MANIFOLD 3
4	ZSC-25-1-2	VALVE CLOSE POSITION SWITCH	ON LINE FROM TK-25 TO MANIFOLD 2
5	ZSO-25-1-2	VALVE OPEN POSITION SWITCH	ON LINE FROM TK-25 TO MANIFOLD 2
6	ZSC-25-1-1	VALVE CLOSE POSITION SWITCH	ON LINE FROM TK-25 TO MANIFOLD 1
7	ZSO-25-1-1	VALVE OPEN POSITION SWITCH	ON LINE FROM TK-25 TO MANIFOLD 1
8	ZSC-VAR-1-1	VALVE CLOSE POSITION SWITCH	ON LINE FROM PRODUCT FROM VARIOUS TANKS TO MANIFOLD 1
9	ZSO-VAR-1-1	VALVE OPEN POSITION SWITCH	ON LINE FROM PRODUCT FROM VARIOUS TANKS TO MANIFOLD 1
10	ZSC-77-1-2	VALVE CLOSE POSITION SWITCH	ON LINE FROM TK-77 TO MANIFOLD 2
11	ZSO-77-1-2	VALVE OPEN POSITION SWITCH	ON LINE FROM TK-77 TO MANIFOLD 2
12	ZSC-55-1-1	VALVE CLOSE POSITION SWITCH	ON LINE FROM TK-55 TO MANIFOLD 1
13	ZSO-55-1-1	VALVE OPEN POSITION SWITCH	ON LINE FROM TK-55 TO MANIFOLD 1
14	ZSC-55-1-2	VALVE CLOSE POSITION SWITCH	ON LINE FROM TK-55 TO MANIFOLD 2
15	ZSO-55-1-2	VALVE OPEN POSITION SWITCH	ON LINE FROM TK-55 TO MANIFOLD 2
16	ZSC-55-1-3	VALVE CLOSE POSITION SWITCH	ON LINE FROM TK-55 TO MANIFOLD 3
17	ZSO-55-1-3	VALVE OPEN POSITION SWITCH	ON LINE FROM TK-55 TO MANIFOLD 3
18	ZSC-33-34-1-1	VALVE CLOSE POSITION SWITCH	ON LINE FROM TK-33-34 TO MANIFOLD 1
19	ZSO-33-34-1-1	VALVE OPEN POSITION SWITCH	ON LINE FROM TK-33-34 TO MANIFOLD 1
20	ZSC-33-34-1-2	VALVE CLOSE POSITION SWITCH	ON LINE FROM TK-33-34 TO MANIFOLD 2
21	ZSO-33-34-1-2	VALVE OPEN POSITION SWITCH	ON LINE FROM TK-33-34 TO MANIFOLD 2
22	ZSC-33-34-1-3	VALVE CLOSE POSITION SWITCH	ON LINE FROM TK-33-34 TO MANIFOLD 3
23	ZSO-33-34-1-3	VALVE OPEN POSITION SWITCH	ON LINE FROM TK-33-34 TO MANIFOLD 3
24	ZSC-462-463-472-1-1	VALVE CLOSE POSITION SWITCH	ON LINE FROM TK-462-463-472 TO MANIFOLD 1
25	ZSO-462-463-472-1-1	VALVE OPEN POSITION SWITCH	ON LINE FROM TK-462-463-472 TO MANIFOLD 1
26	ZSC-54-1-3	VALVE CLOSE POSITION SWITCH	ON LINE FROM TK-54 TO MANIFOLD 3
27	ZSO-54-1-3	VALVE OPEN POSITION SWITCH	ON LINE FROM TK-54 TO MANIFOLD 3
28	ZSC-54-1-2	VALVE CLOSE POSITION SWITCH	ON LINE FROM TK-54 TO MANIFOLD 2
29	ZSO-54-1-2	VALVE OPEN POSITION SWITCH	ON LINE FROM TK-54 TO MANIFOLD 2
30	ZSC-46-26-1-1	VALVE CLOSE POSITION SWITCH	ON LINE FROM TK-26-46 TO MANIFOLD 1
31	ZSO-46-26-1-1	VALVE OPEN POSITION SWITCH	ON LINE FROM TK-26-46 TO MANIFOLD 1
32	ZSC-46-26-1-2	VALVE CLOSE POSITION SWITCH	ON LINE FROM TK-26-46 TO MANIFOLD 2
33	ZSO-46-26-1-2	VALVE OPEN POSITION SWITCH	ON LINE FROM TK-26-46 TO MANIFOLD 2
34	ZSC-46-26-1-3	VALVE CLOSE POSITION SWITCH	ON LINE FROM TK-26-46 TO MANIFOLD 3
35	ZSO-46-26-1-3	VALVE OPEN POSITION SWITCH	ON LINE FROM TK-26-46 TO MANIFOLD 3
36	ZSC-381-382-1-1	VALVE CLOSE POSITION SWITCH	ON LINE FROM TK-381-382 TO MANIFOLD 1
37	ZSO-381-382-1-1	VALVE OPEN POSITION SWITCH	ON LINE FROM TK-381-382 TO MANIFOLD 1
38	ZSC-381-382-1-2	VALVE CLOSE POSITION SWITCH	ON LINE FROM TK-381-382 TO MANIFOLD 2
39	ZSO-381-382-1-2	VALVE OPEN POSITION SWITCH	ON LINE FROM TK-381-382 TO MANIFOLD 2
40	ZSC-381-382-1-3	VALVE CLOSE POSITION SWITCH	ON LINE FROM TK-381-382 TO MANIFOLD 3
41	ZSO-381-382-1-3	VALVE OPEN POSITION SWITCH	ON LINE FROM TK-381-382 TO MANIFOLD 3
42	ZSC-355-356-1-3	VALVE CLOSE POSITION SWITCH	ON LINE FROM TK-355-356 TO MANIFOLD 3
43	ZSO-355-356-1-3	VALVE OPEN POSITION SWITCH	ON LINE FROM TK-355-356 TO MANIFOLD 3
44	ZSC-131-1-2	VALVE CLOSE POSITION SWITCH	ON LINE FROM TK-131 TO MANIFOLD 2

2. Paste

Alternative