

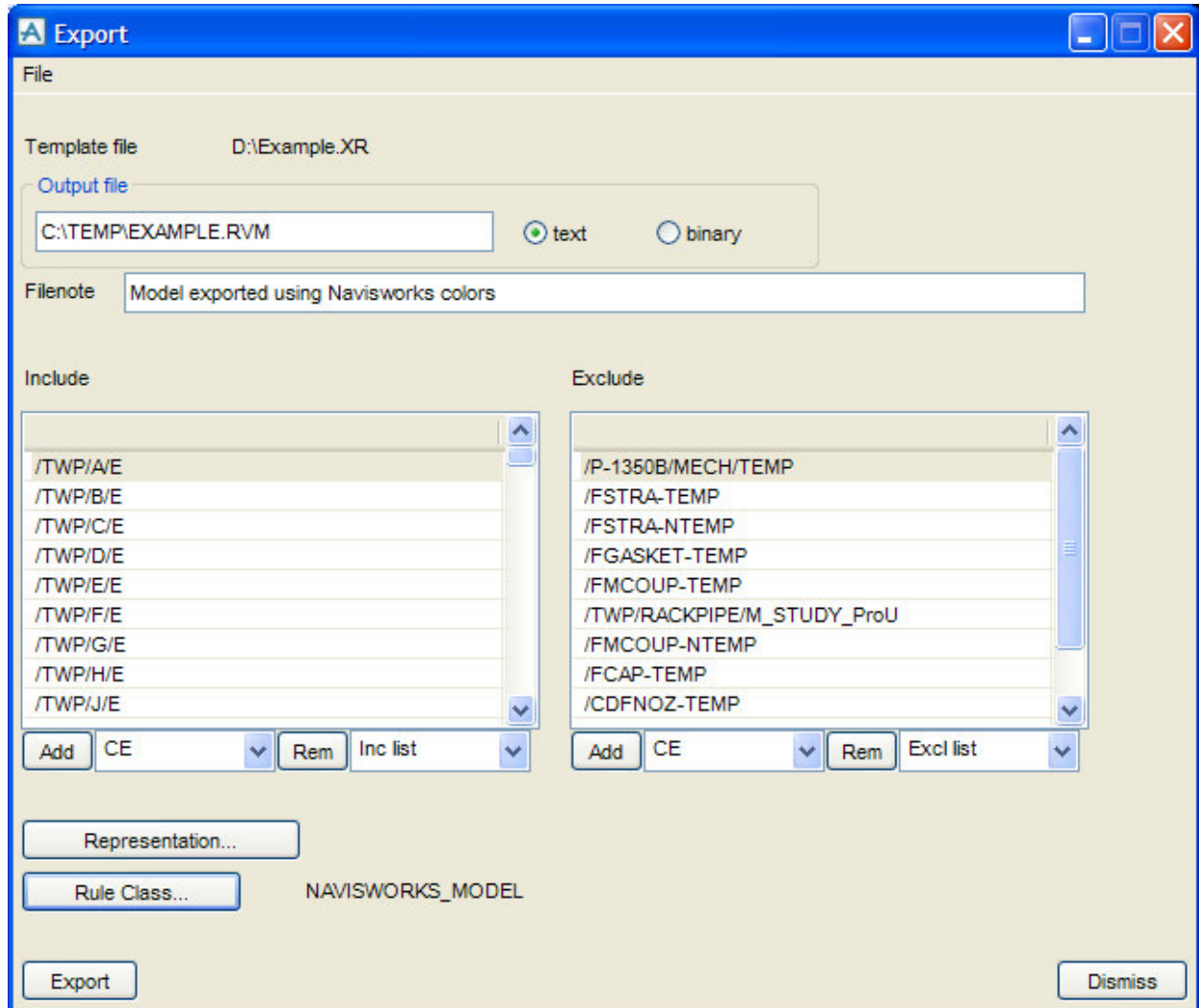
Create an Export Template.

Include the elements you are exporting to Navisworks

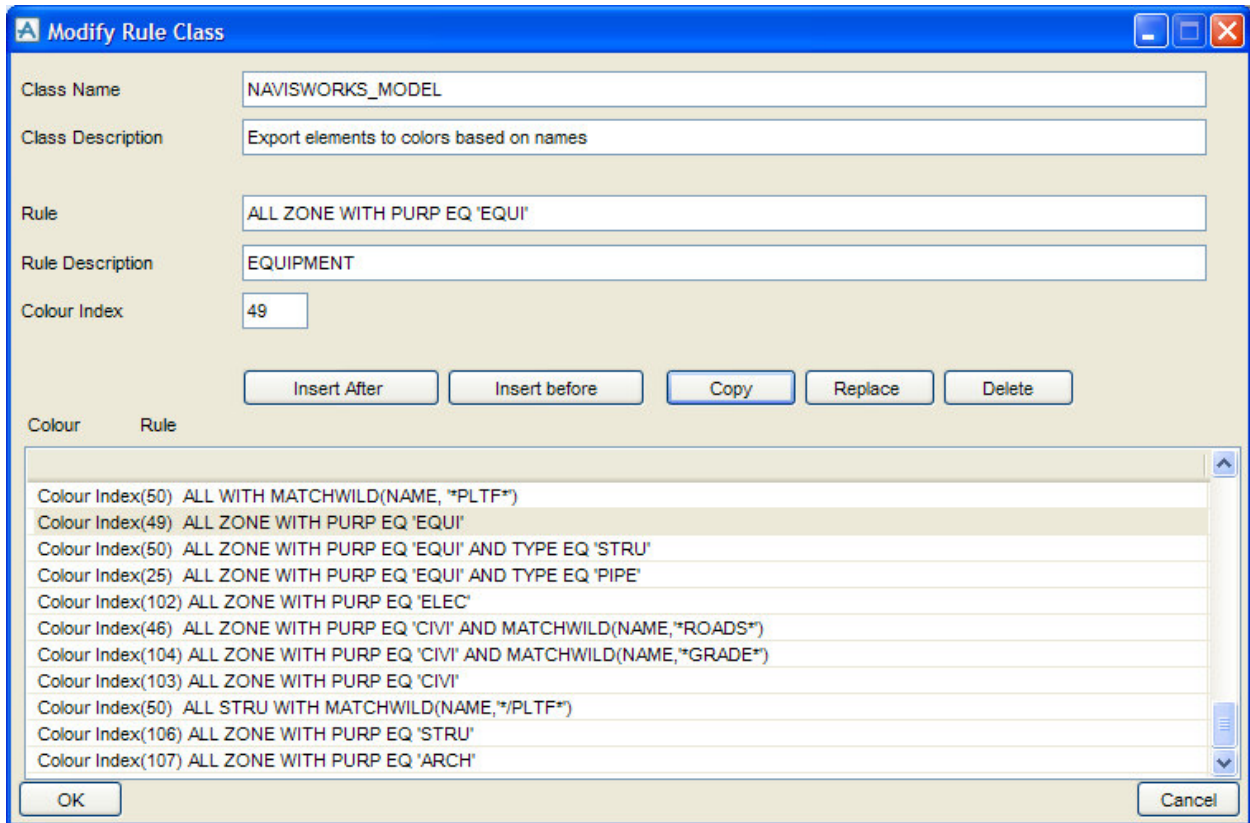
Exclude the elements you are not exporting to Navisworks (as necessary)

Click on the Representation button and set your desired preferences

Click on the Rule Class button to define rules that will apply color codes



This will load the form where you create rules that will associate a color in the colors.txt file with elements in the PDMS model. In the screen shot below, all Zones in the PDMS model with the PURPOSE attribute set to 'EQUI' will be assigned color 49



This will create a file that is kept in your PDMSUSER directory with the name RULEC-NAVISWORKS_MODEL (or whatever name you chose to use for Class Name at the top of the form) I recommend putting a backup copy somewhere else.

(Excerpt from my COLORS.TXT file)

Color assignment:

49 = CUSTOM1_EQUIPMENT
 50 = CUSTOM2_EQUIPMENT_PLATFORMS

Color Definitions:

CUSTOM1_EQUIPMENT = 85 85 35
 CUSTOM2_EQUIPMENT_PLATFORMS = 75 75 25