

Home Viewport Review Animation View Output Render Sectioning Tools

Append Refresh Reset All... File Options

Select Save Selection Select All Select Same Selection Tree Find Items Quick Find

Hide Visible Hide Unselected Unhide All Links Quick Properties Properties

Clash Detective TimeLiner Quantification Autodesk Rendering Animator Scripter Appearance Profiler Batch Utility Compare DataTools

Visibility Display Tools

Selection Tree

Standard

- civ13.dwg
- BB3.dwg
- stair p_1.dwg
- dry riser_2.dwg
- Ext Lights_Cams_L.dwg
- durasteel_ceilings_L.dwg
- uns1.dwg
- ec1.dwg
- civ1.dwg
- SM Level 1.dwg
- pan1.dwg
- HPF - support_1.dwg
- sec_R_B.dwg
- BHS_R_C.dwg
- sec_R_C.dwg
- sec_R_D.dwg
- civ4.dwg
- DC14.dwg
- DC2 LEVEL 4 Plant Rev C014
- riser wind posts.dwg
- Raf12.dwg

Selection Resolution: First Object

- File
- Layer
- First Object
- Last Unique
- Last Object
- Geometry

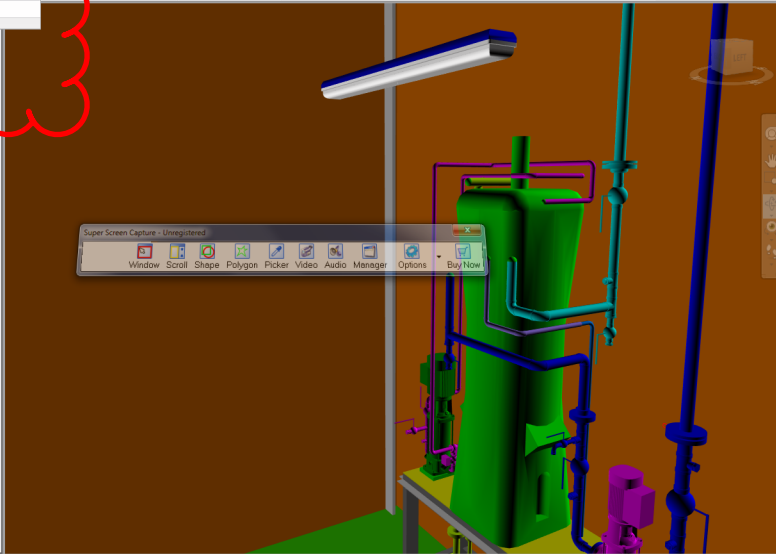
Difference (mm)

067.2	454.2	-208.7
-------	-------	--------

Distance (mm)

2126.8

Options...



Properties

0 Items Selected

Saved Viewpoints

- top view-roof off
- front section
- left section
- right section
- front_left_right_top_sec
- riser a problem
- dryriser_1
- dryriser_2
- fire lobbys
- View
- soil_vent_2
- lobby a