

Flange connection (Small) Tongue and Groove

Normally a flange connection exist out of two flanges with equal facing.
(FF/FF Flat face, RF/RF Raised face, etc.)

For a Tongue and Groove we have two different flanges;

1x Tongue facing

1x Groove facing

I've made two new flanges in the standard (ASME) fitting catalog.

Action 1:

Create end codes in 3D drawing:

- Open Project
- Open drawing
- give command: <plantendcodes>
- Add: (see Figure 1)
 - End code name: TF
 - Description: Tongue Facing
 - OKE

-Add: Also for:

- End code name: GF
- Description: Groove Facing
- OKE

Result in Figure 2

Action 2:

Create in project settings "Simple Joint Setting":

- Open Project properties
- Plant 3D DWG Settings
- Connections
- Joint Settings
- Simple Joints Add:
 - Joint name : TongueandGroove
 - End 1 <select> : TF
 - End 2 <select> : GF
 - Fasteners <select> : BoltSet, Gasket

Results in Figure 3

Create Compound Joints:

- (Open Project properties)
- (Plant 3D DWG Settings)
- (Connections)
- (Joint Settings)
- Compound Joints Add:
 - Joint name : Auto TG
 - End 1 <select> : TF,GF
 - End 2 <select> : PL,BV, Universal_ET
 - Connection Compound <select> : pipe run component, flange, nom. diameter

Results in Figure 4

Figure 1

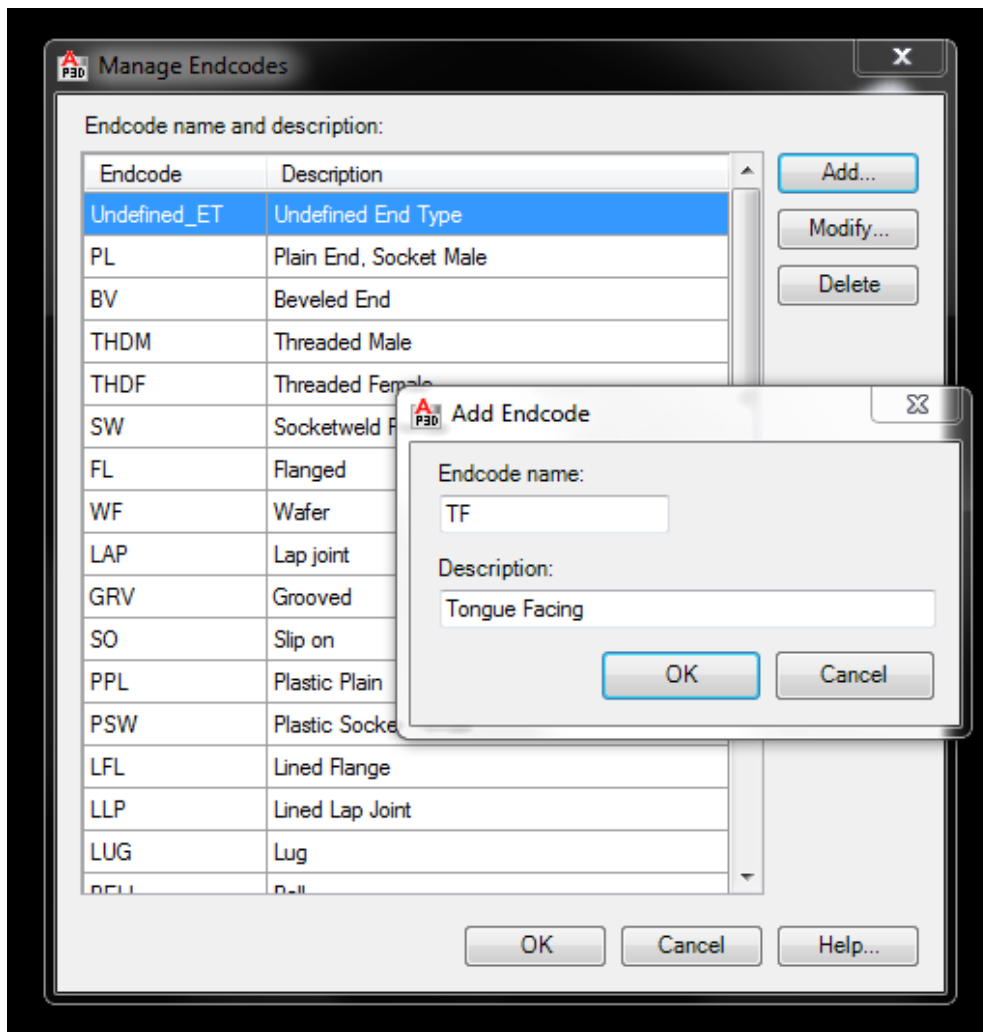


Figure 2

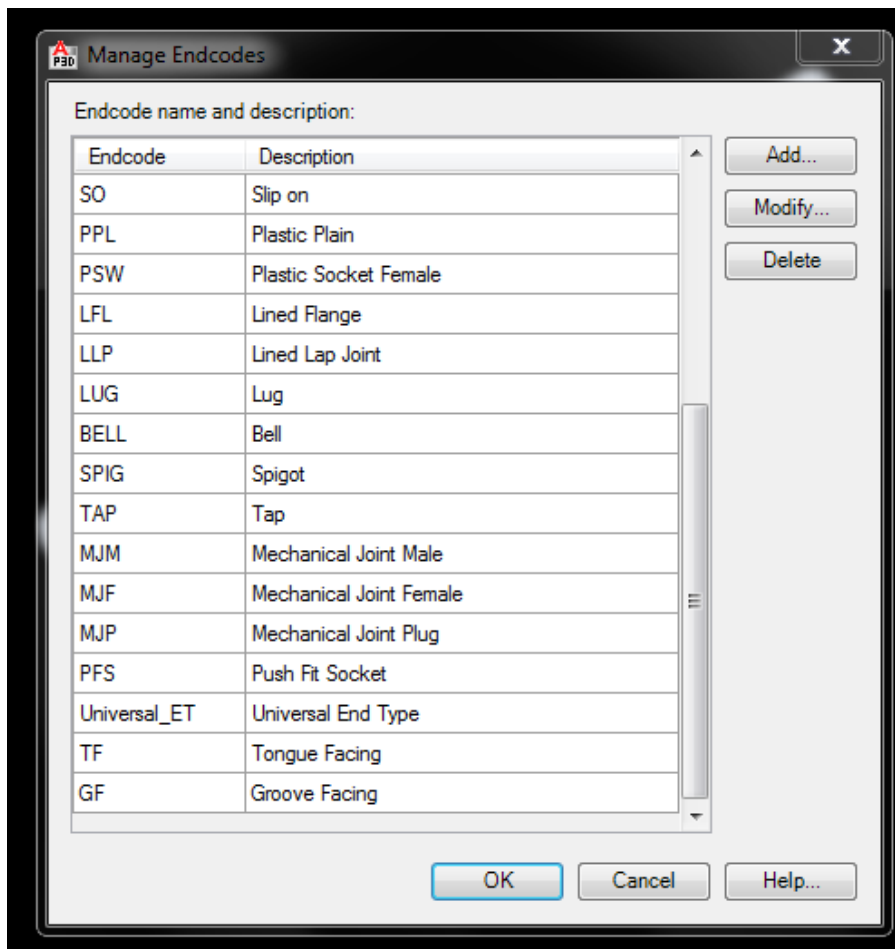


Figure 3

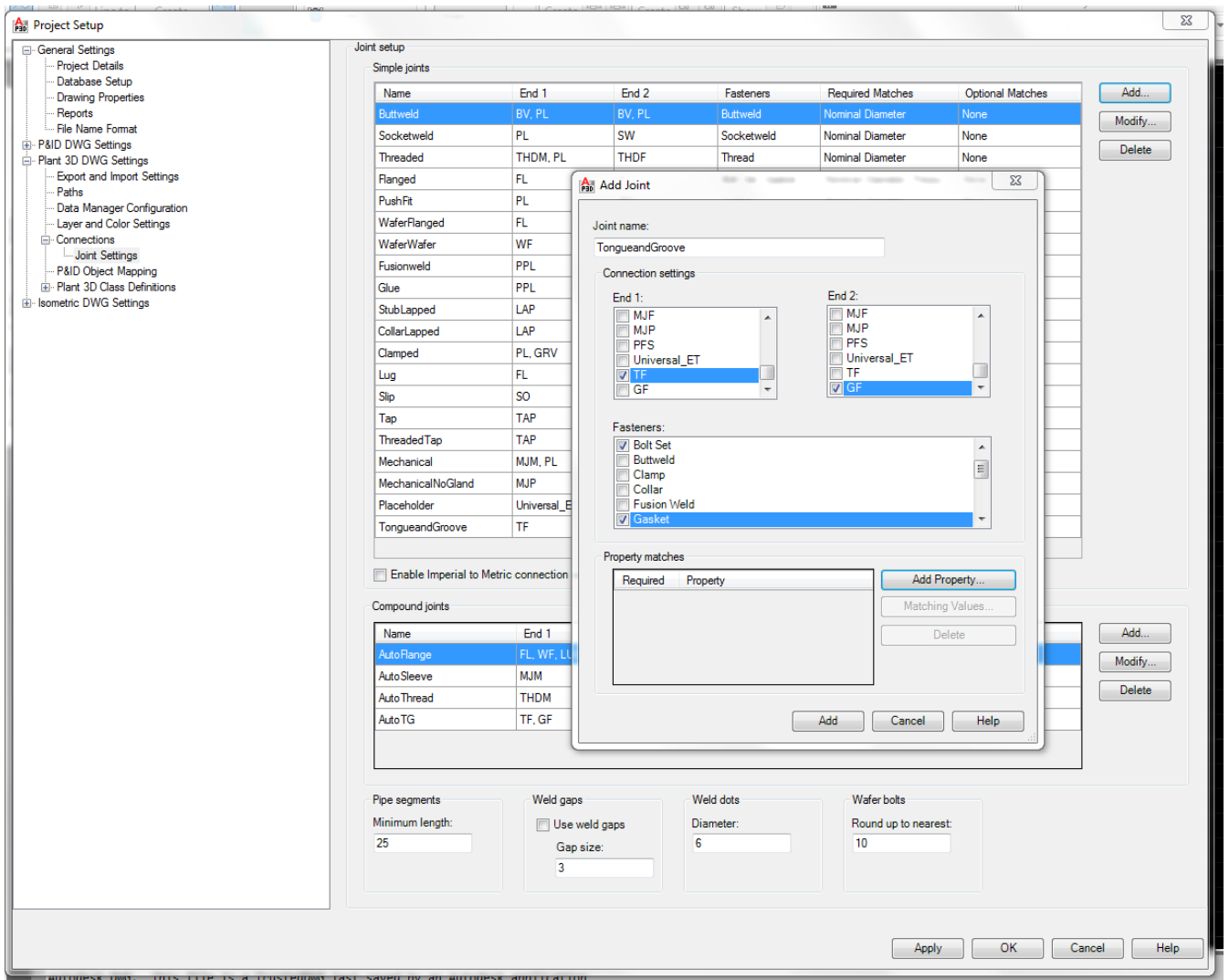
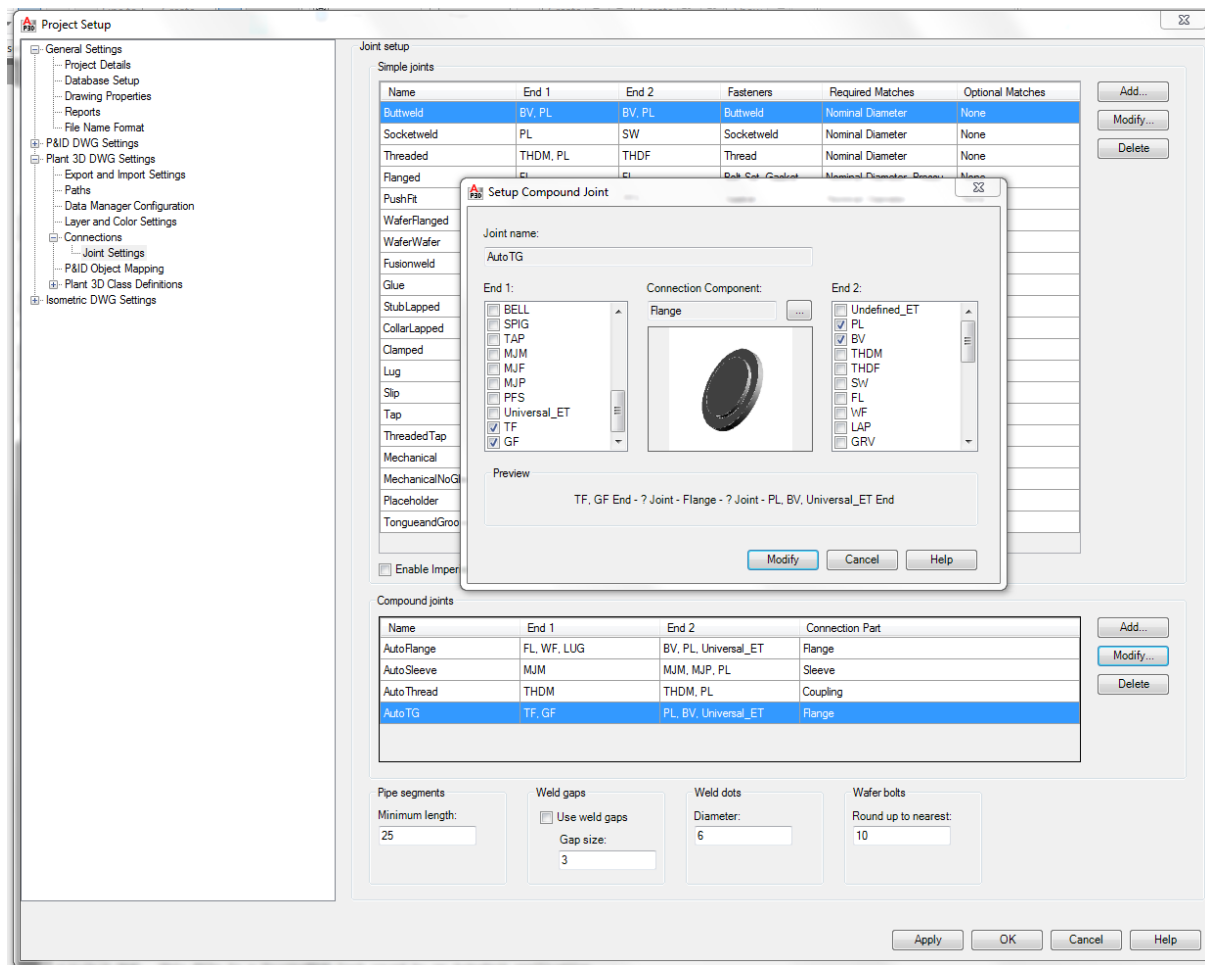


Figure 4



Project Settings are ready now. Next step is to make the flanges in the catalog.

- Open: AutoCAD Plant3D 2012 Spec Editor
- Open: Catalog (Pipes and Fitting Catalog)
- search and select a basic flange in the catalog
For example, Flange WN, 150 LB, RF, ASME B16.5
- Duplicate component (2X)
- Rename : Flange WN, cl. 150, TF, ASME B16.5
Flange WN, cl.150, GF, ASME B16.5
- <TAB> General Properties:
 - Port1 End type : TF (GF)
 - Facing : TF (GF)
 - Port 2 End type : BV (BV)
- <TAB> Size: change size for L (example for 1") see also table below.
 - Normally Raised Face flange : L= 55.6 mm
 - For Tongue Face Flange : L= 61.0 mm
 - For Groove Face Flange : L= 54.0 mm

See Figure 5 (Tongue) and Figure 6 (Groove)

Figure 5

Catalog: P:\PLANT 3D 2012\0001 TEST\Spec Sheets\TandGtest.pcat
Editing Piping Component General Properties

Spec Editor Branch Table Editor Catalog Editor

Connection Port Properties

All Ports have the same properties

Port 1 (S1)

Current Port: [Inch]

Nominal Unit: TF

End Type: TF

Flange Std: TF

Gasket Std: TF

Facing: 150

Pressure Class: R16

Schedule: R16

Piping Component Properties

Long Description (Family): FLANGE WN, c150, TF, ASME B16.5

Compatible Standard: ASME B16.5

Manufacturer:

Material:

Material Code:

Short Description: FLANGE WN

Design Std:

Design Pressure Factor:

Weight Unit:

Connection Port Count: 2

Iso Symbol Type: FLANGE

Iso Symbol SKEY: FLWN



View large preview with dimensions

Create New Component Duplicate Component Delete Component

Edit Operator Assignments Save to Catalog

Common Filters

Reset Filters

Part Category: ~ All ~

Component Type: ~ All ~

Main End Type: ~ All ~

Pressure Class: ~ All ~

Units: ~ All ~

Catalog: TandGtest

Filter	Size Range	Long Description (Family)	Short Description	Material	Material Code	End Type	Facing	Pressure Class	Schedule	Design Std	Design Pressure Factor	Manufacturer
	~ All ~	~ All ~	FLANGE WN	~ All ~	~ All ~	~ All ~	~ All ~	~ All ~	~ All ~	~ All ~	~ All ~	~ All ~
	1" - 24"	FLANGE WN, 150 LB, RT, ASME B16.5	FLANGE WN		FL	RTJ	150					
	26" - 60"	FLANGE WN, 150 LB, FF, ASME B16.47, SERIES A	FLANGE WN		FL	FF	150					
	26" - 60"	FLANGE WN, 150 LB, FF, ASME B16.47, SERIES B	FLANGE WN		FL	FF	150					
	1" - 1"	FLANGE WN, c150, GF, ASME B16.5	FLANGE WN		GF	GF	150					
	1/2" - 24"	FLANGE WN, 150 LB, FF, ASME B16.5	FLANGE WN		FL	FF	150					
	26" - 60"	FLANGE WN, 150 LB, RF, ASME B16.47, SERIES A	FLANGE WN		FL	RF	150					
	1/2" - 24"	FLANGE WN, 150 LB, TF, ASME B16.5	FLANGE WN		TF	RF	150					
	1" - 1"	FLANGE WN, c150, TF, ASME B16.5	FLANGE WN		TF	TF	150					
	1/2" - 24"	FLANGE WN, 150 LB, RF, ASME B16.5	FLANGE WN		FL	RF	150					
	26" - 60"	FLANGE WN, 150 LB, RF, ASME B16.47, SERIES B	FLANGE WN		FL	RF	150					

Figure 6

Catalog: P:\PLANT 3D 2012\0001 TEST\Spec Sheets\TandGtest.pcat
 Editing Piping Component General Properties

Connection Port Properties


All Ports have the same properties

Port 1 (SI)

Current Port: Inch
 Nominal Unit: GF
 End Type: GF
 Flange Std: GF
 Gasket Std: GF
 Facing: 150
 Pressure Class: R76
 Schedule:

Piping Component Properties

Long Description (Family): FLANGE WN, d150, GF, ASME B16.5
 Compatible Standard: ASME B16.5
 Manufacturer:
 Material:
 Material Code: FLANGE WN
 Short Description:
 Design Std:
 Design Pressure Factor:
 Weight Unit:
 Connection Port Count: 2
 Iso Symbol Type: FLANGE
 Iso Symbol SKEY: FLWN

 View, large preview with dimensions

General Properties | Sizes

Create New Component | Duplicate Component | Delete Component

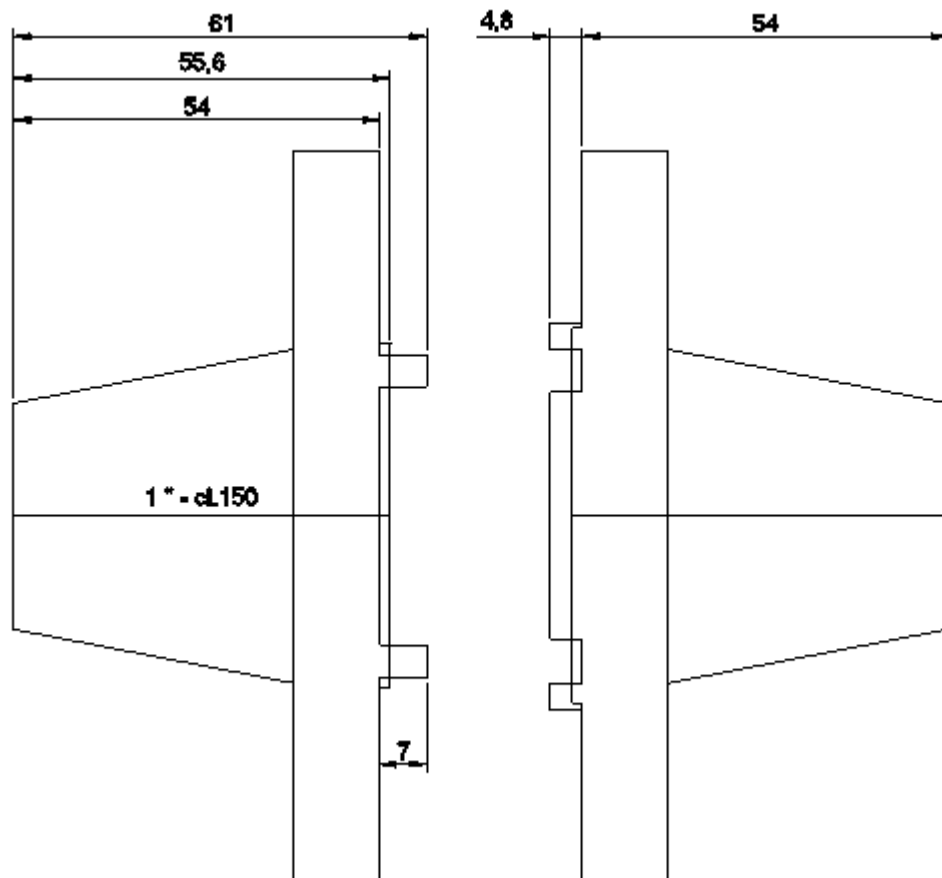
Edit Operator Assignments | Save to Catalog

Common Filters | Reset Filters | Part Category: ~ All ~ | Component Type: ~ All ~ | Main End Type: ~ All ~ | Pressure Class: ~ All ~ | Units: ~ All ~ | Catalog: TandGtest

Filter	Size Range	Long Description (Family)	Short Description	Material	Material Code	End Type	Facing	Pressure Class	Schedule	Design Std	Design Pressure Factor	Manufacturer
~ All ~	~ All ~	~ All ~	FLANGE WN	~ All ~	~ All ~	~ All ~	~ All ~	~ All ~	~ All ~	~ All ~	~ All ~	~ All ~
1" - 24"		FLANGE WN, 150 LB, RTJ, ASME B16.5	FLANGE WN			FL	RTJ	150				
26" - 60"		FLANGE WN, 150 LB, FF, ASME B16.47, SERIES A	FLANGE WN			FL	FF	150				
26" - 60"		FLANGE WN, 150 LB, FF, ASME B16.47, SERIES B	FLANGE WN			FL	FF	150				
1" - 1"		FLANGE WN, d150, GF, ASME B16.5	FLANGE WN			GF	GF	150				
1/2" - 24"		FLANGE WN, 150 LB, FF, ASME B16.5	FLANGE WN			FL	FF	150				
26" - 60"		FLANGE WN, 150 LB, RF, ASME B16.47, SERIES A	FLANGE WN			FL	RF	150				
1/2" - 24"		FLANGE WN, 150 LB, TF, ASME B16.5	FLANGE WN			FL	RF	150				
1" - 1"		FLANGE WN, d150, TF, ASME B16.5	FLANGE WN			TF	TF	150				
1/2" - 24"		FLANGE WN, 150 LB, RF, ASME B16.5	FLANGE WN			FL	RF	150				
26" - 60"		FLANGE WN, 150 LB, RF, ASME B16.47, SERIES B	FLANGE WN			FL	RF	150				

Catalog Browser

Size	RF flange H= h	T(tongue) Face H= h+5,4	G(groove) Face H= h-1,6
1/2"	47,8	53,2	46,2
3/4"	52,3	57,7	50,7
1"	55,6	61,0	54,0
1.1/2"	62,0	67,4	60,4
2"	63,5	68,9	61,9



Gasket:

Gasket port 1(S1) and port 2(S2)

End type : Undefined_ET
Facing : blanc

Valve: (Both sides Groove Facing)

General Properties:

Port1 End type : GF
Facing : GF
Port 2 End type : GF
Facing : GF

Complete pipe spec in Figure 7

Figure 7

