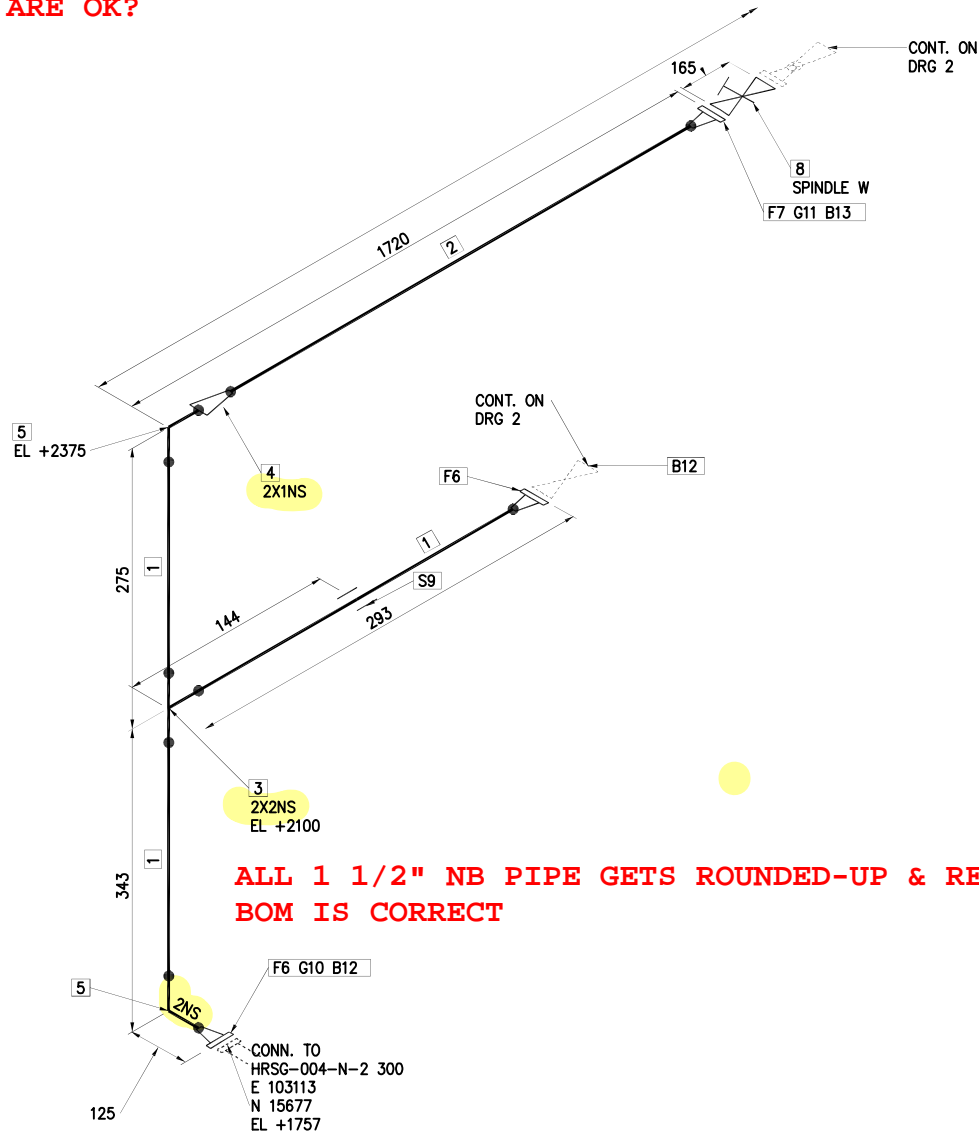




ON SHEET 2 NORTH ARROW IS VERY SMALL
SHT 1 & 3 ARE OK?



ALL 1 1/2" NB PIPE GETS ROUNDED-UP & REPORTED AS 2"
BOM IS CORRECT

BILL OF MATERIAL

ITEM	PART DESCRIPTION	MATERIAL	SCH	QTY
1	PIPE PIPE, SEAMLESS, 1 1/2" ND, PE, ASME B36.10, ASTM A106 GR B SMLS, SCH 40	ASTM A106 Gr B SMLS	40	0,6 M
2	PIPE PIPE, SEAMLESS, 1" ND, PE, ASME B36.10, ASTM A106 GR B SMLS, SCH 80	ASTM A106 Gr B SMLS	80	1,6 M
3	FITTINGS TEE, 1 1/2" ND, BW, ASME B16.9, ASTM A234 GR WPB SMLS, SCH 40	ASTM A234 Gr WPB SMLS	40	1
4	FITTINGS REDUCER (CONC), 1 1/2"x1" ND, BW, ASME B16.9, ASTM A234 GR WPB SMLS, SCH 40X SCH 80	ASTM A234 Gr WPB SMLS	40	1
5	FITTINGS ELL 90 LR, 1 1/2" ND, BW, ASME B16.9, ASTM A234 GR WPB SMLS, SCH 40	ASTM A234 Gr WPB SMLS	40	2
6	FLANGES FLANGE WN, 1 1/2" ND, 300 LB, RF, ASME B16.5, ASTM A105	ASTM A105		2
7	FLANGES FLANGE WN, 1" ND, 300 LB, RF, ASME B16.5, ASTM A105	ASTM A105		1
8	VALVES / IN-LINE ITEMS GATE VALVE, SOLID WEDGE, 1" ND, 300 LB, RF, ASME B16.10, 6 1/2" LG, ASTM A216 GR WPB, HAND WHEEL, H=18", W=9 3/4" Clamped slide 1 / Clamped anchor 1	ASTM A216 Gr WPB		1
9	SUPPORTS Clamped slide 1 / Clamped anchor 1			1
10	GASKETS GASKET, SWG, 1 1/2" ND, 1/8" THK, 300 LB, RF, ASME B16.20, CS/PTFE	CS/PTFE		1
11	GASKETS GASKET, SWG, 1" ND, 1/8" THK, 300 LB, RF, ASME B16.20, CS/PTFE	CS/PTFE		1
12	BOLTS STUD BOLT 3/4" X 90 LG, ASTM A193, B7 W/2 HEX. NUT 3/4", ASTM A194, GR 2, 2 WASHER 3/4", ASTM F436	ASTM A193 B7, A194 Gr 2		8
13	BOLTS STUD BOLT 5/8" X 80 LG, ASTM A193, B7 W/2 HEX. NUT 5/8", ASTM A194, GR 2, 2 WASHER 5/8", ASTM F436	ASTM A193 B7, A194 Gr 2		4

MAXIMUM WORKING CONDITIONS :
PIPING CONTRACTOR TO CHECK ALL DIMENSIONS PRIOR TO FABRICATION
INSTRUMENT CONNECTION POSITIONS TO BE SITE DETERMINED

REV	DATE	BY	DESCRIPTION

PIPING CONTRACTOR TO DECIDE ON EXTENT OF ANY PREFABRICATION

* DENOTES FIELD WELD. ONE END OF PIPE 150 (6") LONG
+ DENOTES FLANGE LOOSE FOR SITE WELD. END OF PIPE 150 (6") LONG

Progressive Energy Services S.A DE C.V
ADVANCED ENERGY TECHNOLOGY

ISOMETRIC PIPE DETAIL	DRAWN BY	G RANDALL	DATE	17/02/2011
	CHECKED BY	G RANDALL	DATE	
LINE No: 1017-CHP	PAPER MACHINE	JOB SITE		SHT. NO.
		KC ECATEPEC		1
PIPING MATERIAL SPECIFICATION	JOB No	DRAWING No.	REV.	
	CS150-2	QP1086	PID - 1017-CHP	