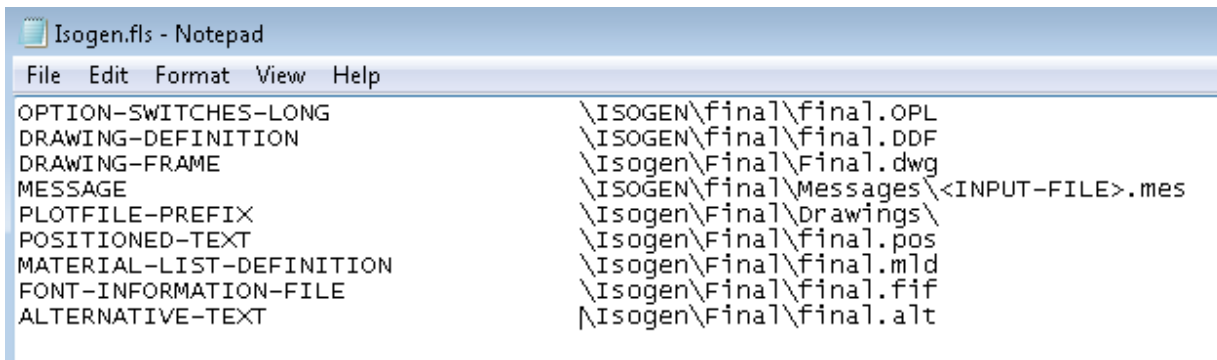


Issue:
PISOGEN

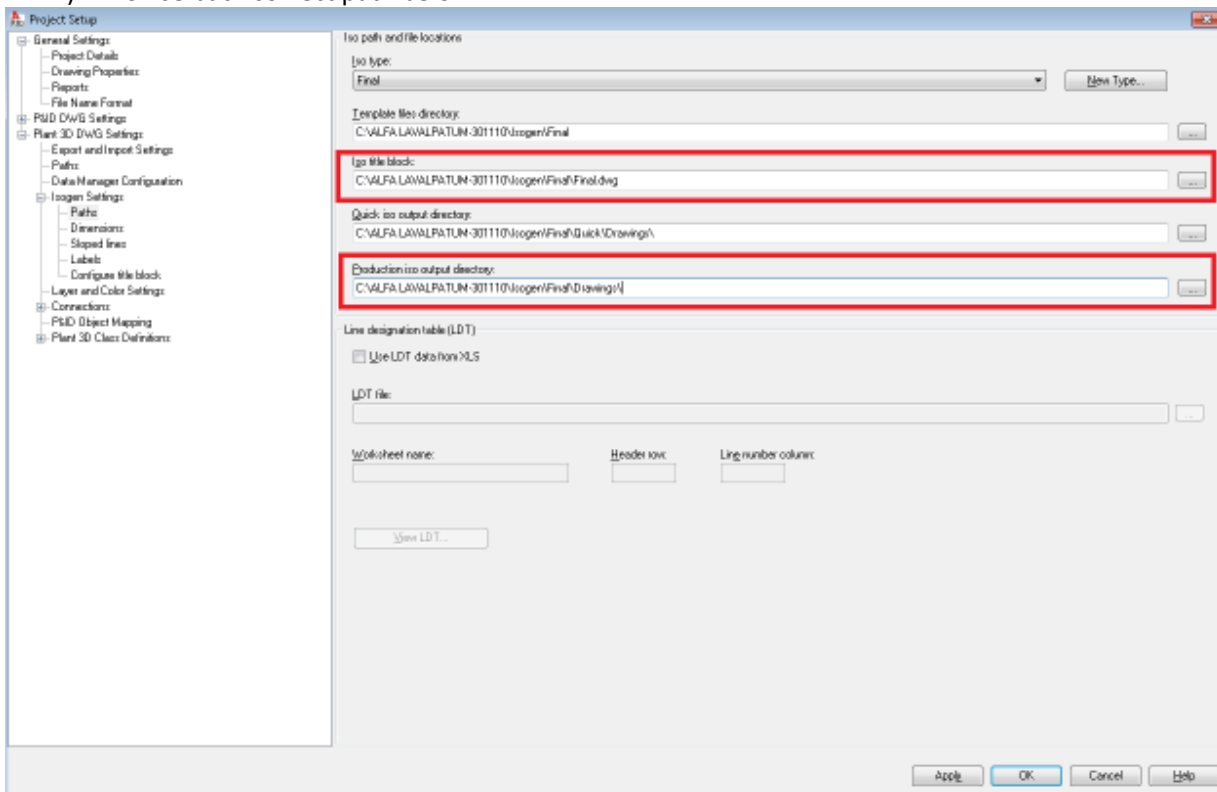
Solutions:

- 1) Change Isogen.fls to the path as below. Which Isogen.fls located in final folder.



```
Isogen.fls - Notepad
File Edit Format View Help
OPTION-SWITCHES-LONG          \ISOGEN\final\final.OPL
DRAWING-DEFINITION           \ISOGEN\final\final.DDF
DRAWING-FRAME                 \Isogen\Final\Final.dwg
MESSAGE                       \ISOGEN\final\Messages\<INPUT-FILE>.mes
PLOTFILE-PREFIX              \Isogen\Final\Drawings\
POSITIONED-TEXT              \Isogen\Final\final.pos
MATERIAL-LIST-DEFINITION     \Isogen\Final\final.mld
FONT-INFORMATION-FILE        \Isogen\Final\final.fif
ALTERNATIVE-TEXT             \Isogen\Final\final.alt
```

- 2) Browse back correct path below.



- 3) Restart the softwareDone.

Regards,

Jason Chong

Technical Manager - Manufacturing and Plant Solutions

Gentech i-Gentech Sdn Bhd

Kelana Business Centre, Unit 411 & 412 Block A,
Jalan SS 7/2, Kelana Jaya, 47301 Petaling Jaya,

Selangor DE, MALAYSIA.

Phone : (603) 7492 8877 ext: 112

Fax : (603) 7492 8855

Mobile : (016) 267 1657

Autodesk
Authorized Training Center

Autodesk
Gold Partner