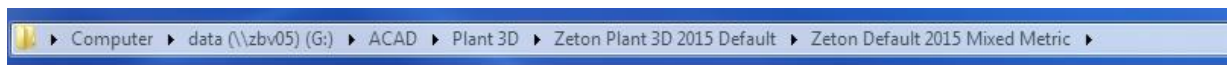
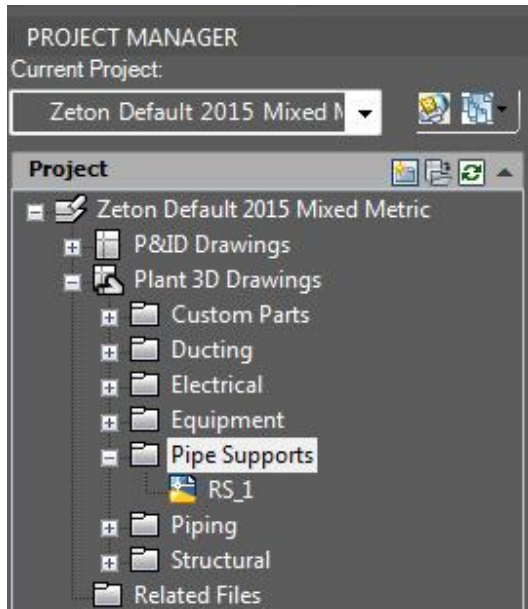
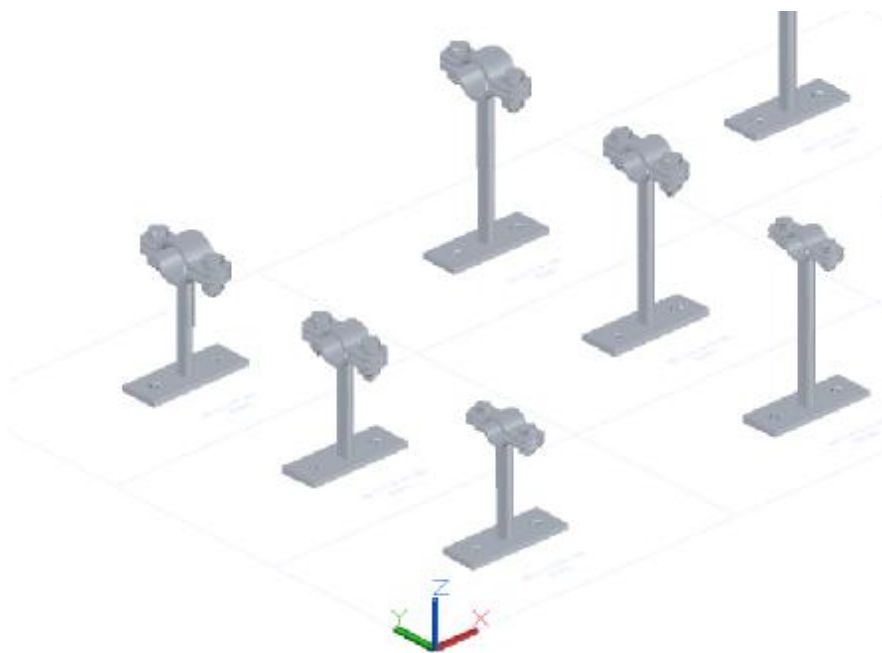


Zeton PipeSupportSpec.

Under Zeton Default 2015 Mixed Metric project is a drawing located: RS-1 under folder Pipe Supports:



In this drawing I have placed several Blocks (3D models) off supports:



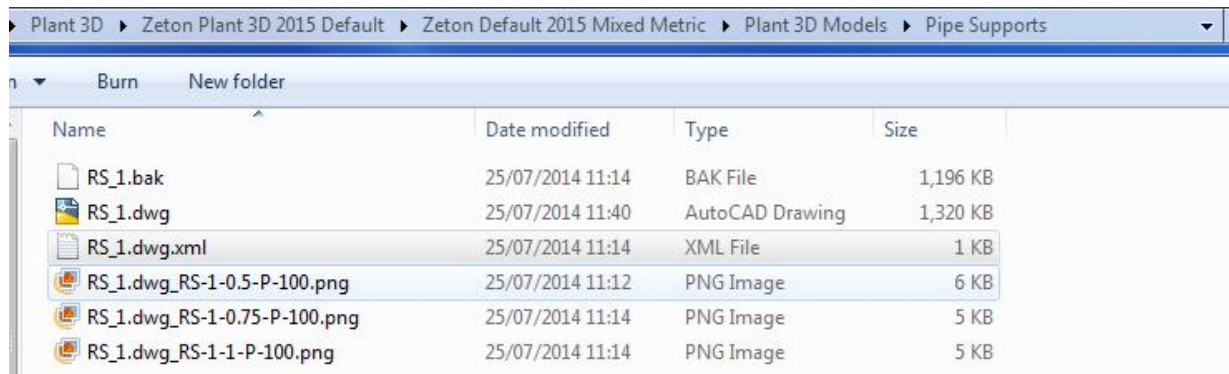
From 3 of these blocks I created plantparts with the command: "PLANTPARTCONVERT".

The plantparts have each 1 connection port on the pipe line center in direction off the centreline.

See below.



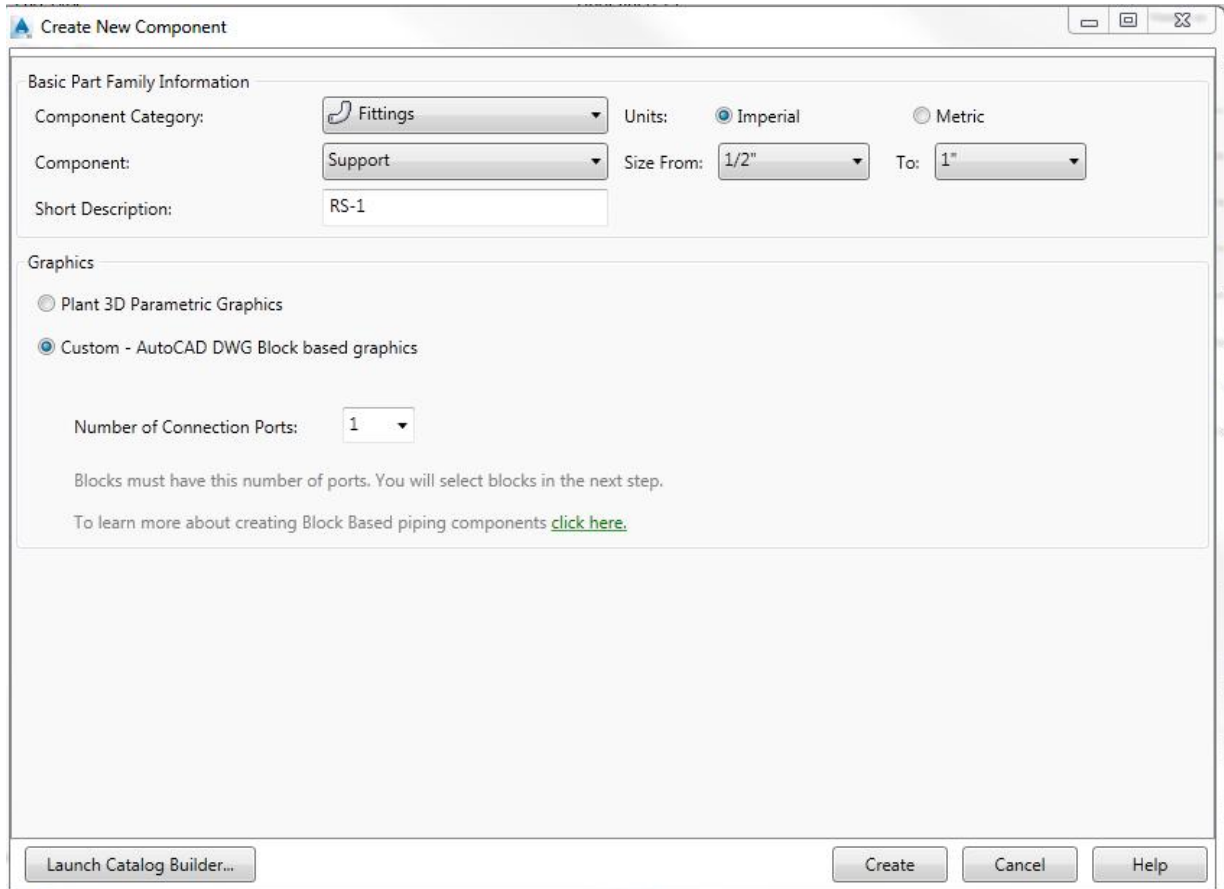
After creating these plantparts, there are created automatically several (3) .png-files in the same pipe support folder, see below:



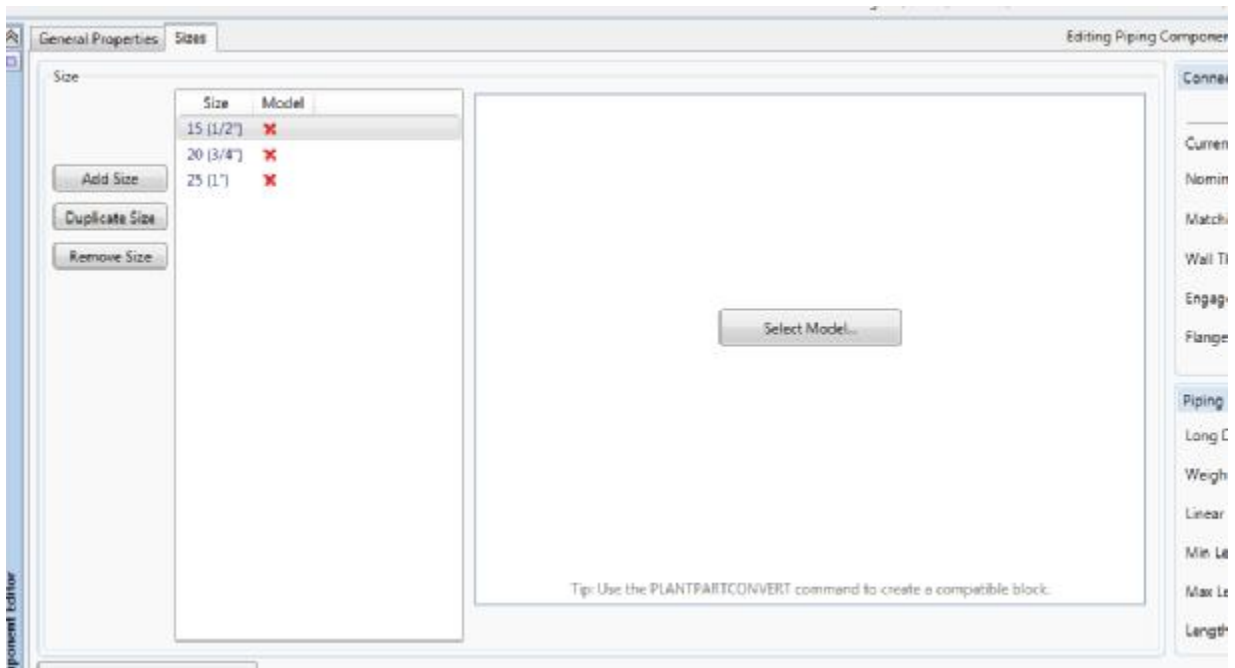
With plant3DSpeceditor, I created a new support spec (copy from the autodesk PipeSupportSpec):

- ZetonSupportSpec.pspc
- ZetonSupportSpec.pspc

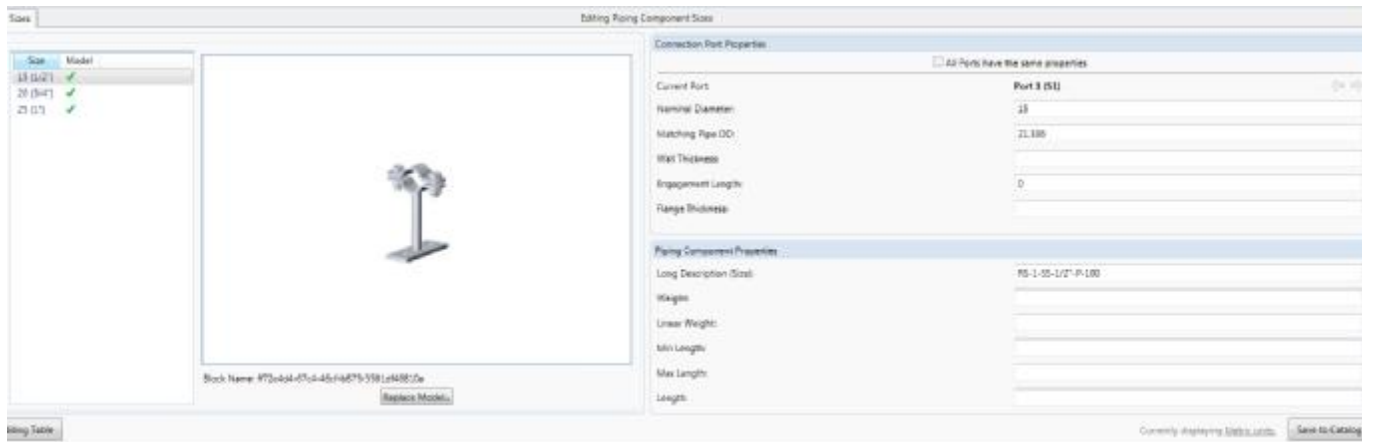
In the Catalog Editor I selected "CREATE NEW COMPONENT". See below:



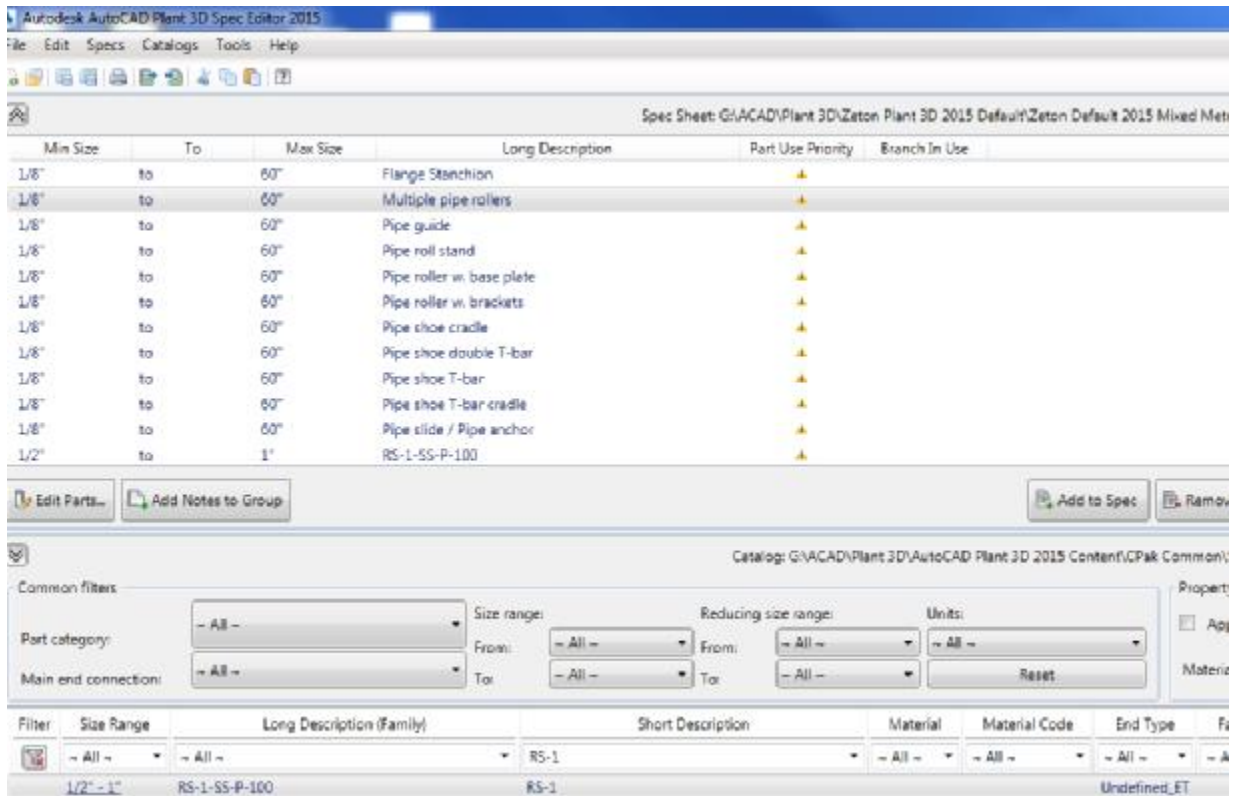
with "SELECT MODEL" I added the plantparts to the catalog. See below



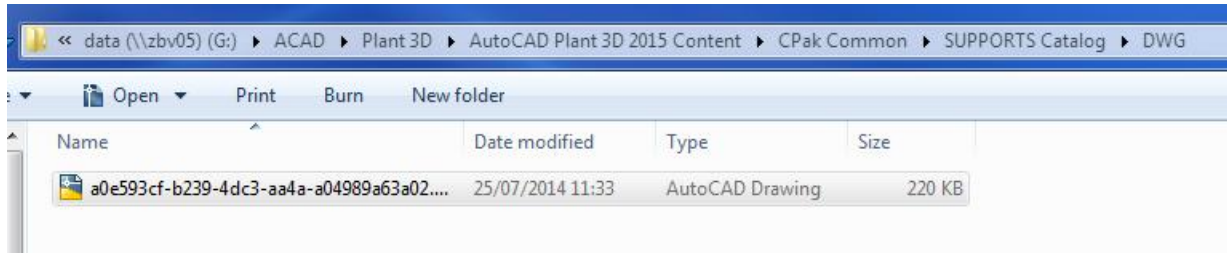
Result:



After this I placed the catalog parts (RS-1-SS-P-100) in de spec:



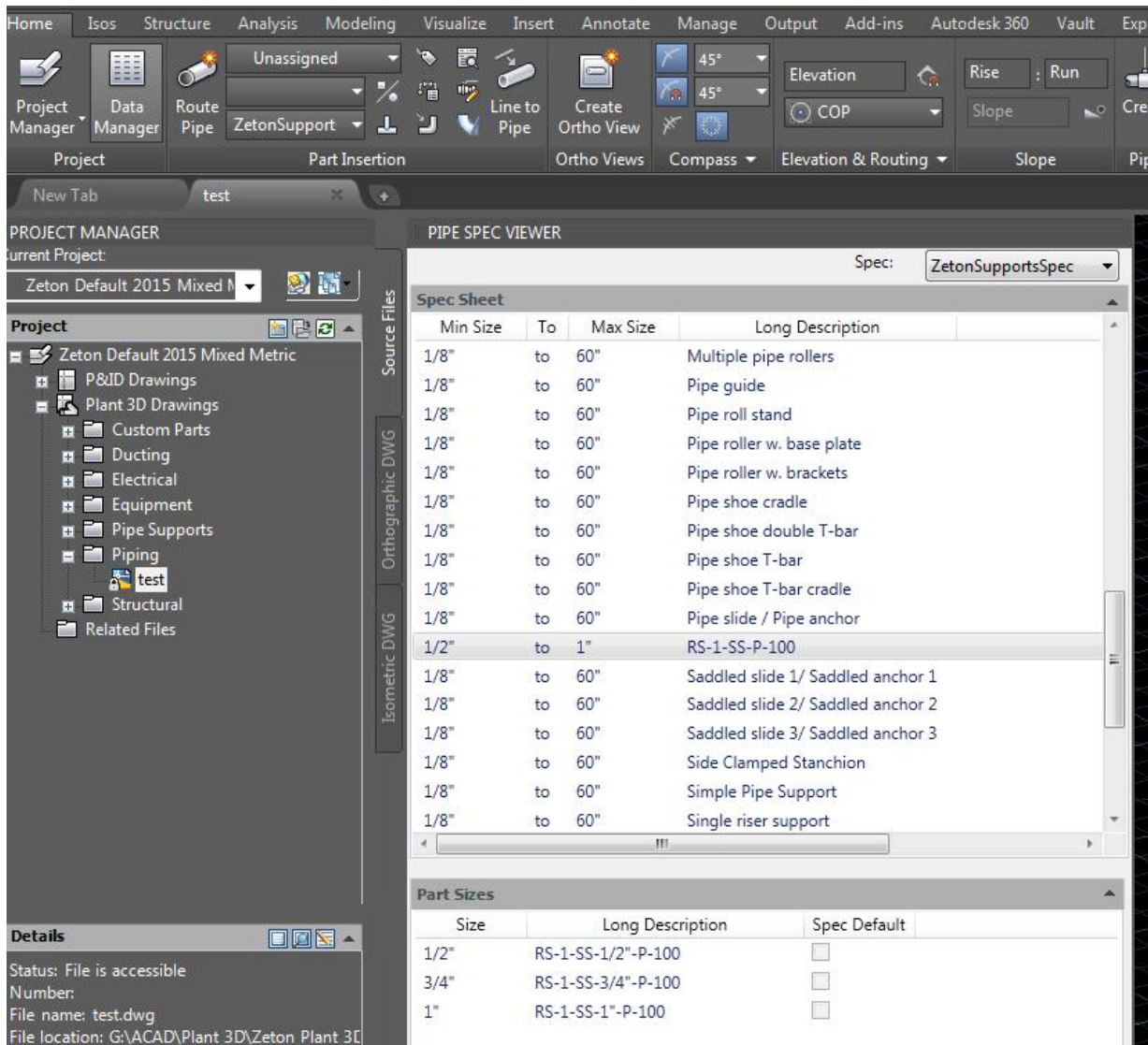
At same time a drawing is placed (automatically) under folder AutoCADPlant3DContent with the support blocks. See below:



In drawing "test" in the project I open the support spec with the spec viewer.

In this spec viewer I see the 3 added pipe supports (RS-1-SS-1/2"-P-100, RS-1-SS-3/4"-P-100, RS-1-SS-1"-P-100)

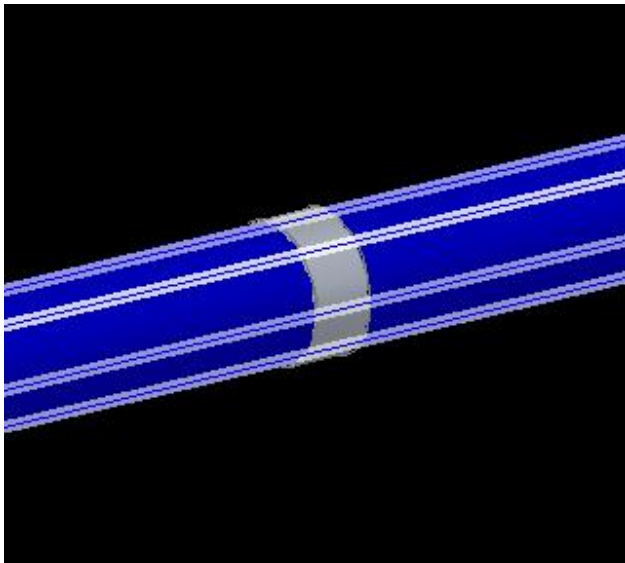
⇒ I can't select the Autodesk PipeSupportSpec. Why not? It's in the same project spec sheet folder.



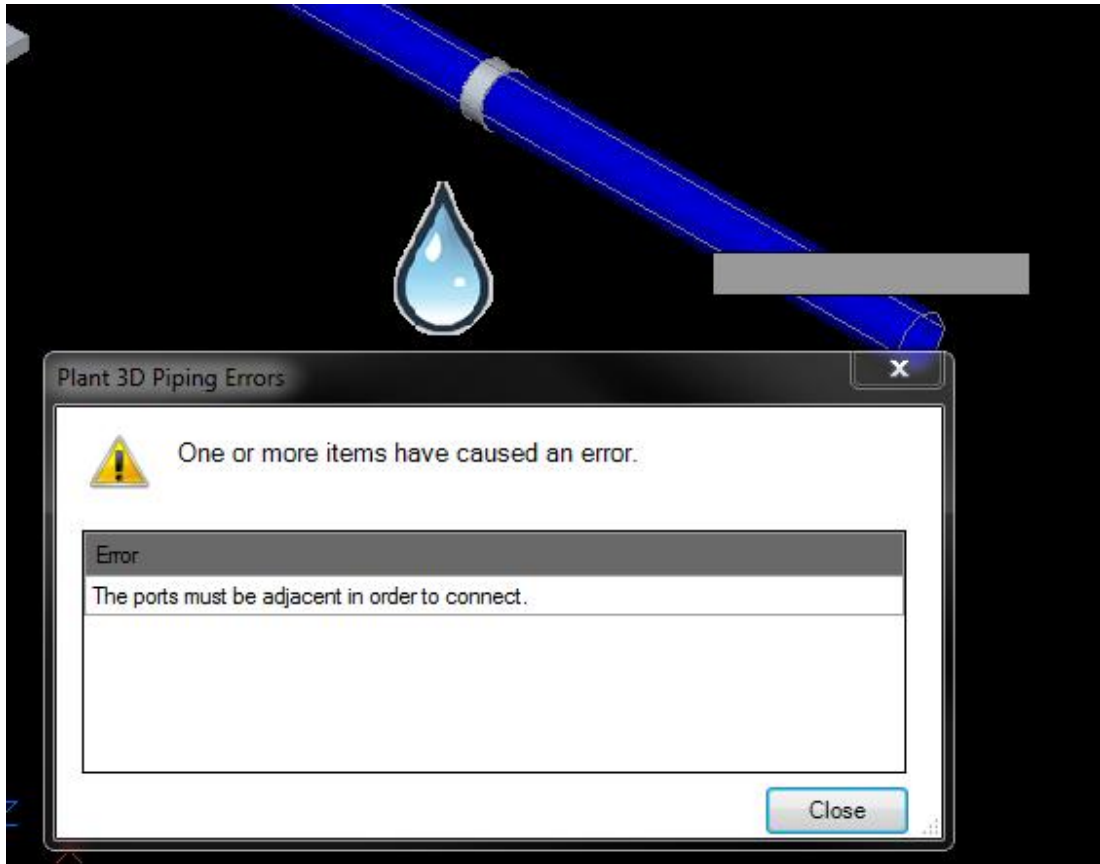
I ad one support to a pipeline with spec viewer : insert in model
Support is placed but not connected to the pipeline:
Teardrop (disconnect marker)



For example: Simple Pipe Support from TOOLPALETTE :
Is oke.



Simple Pipe Support from spec viewer (insert in model) results also with a teardrop.



Problem: adding from spec viewer results in a disconnected support.

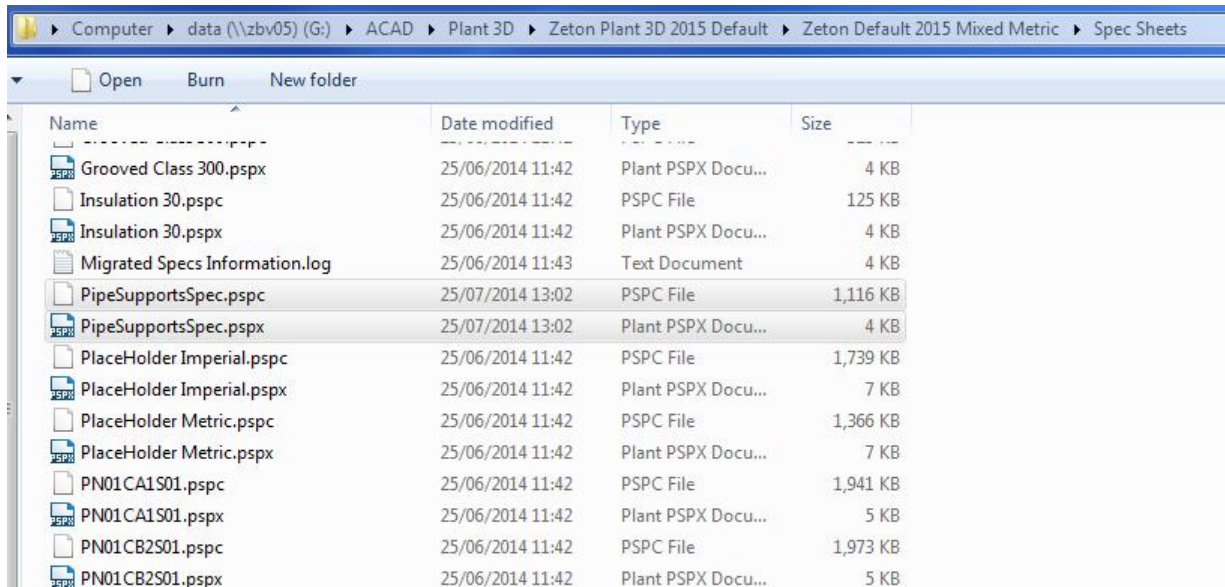


After this I placed the custom supports in the toolpalette.

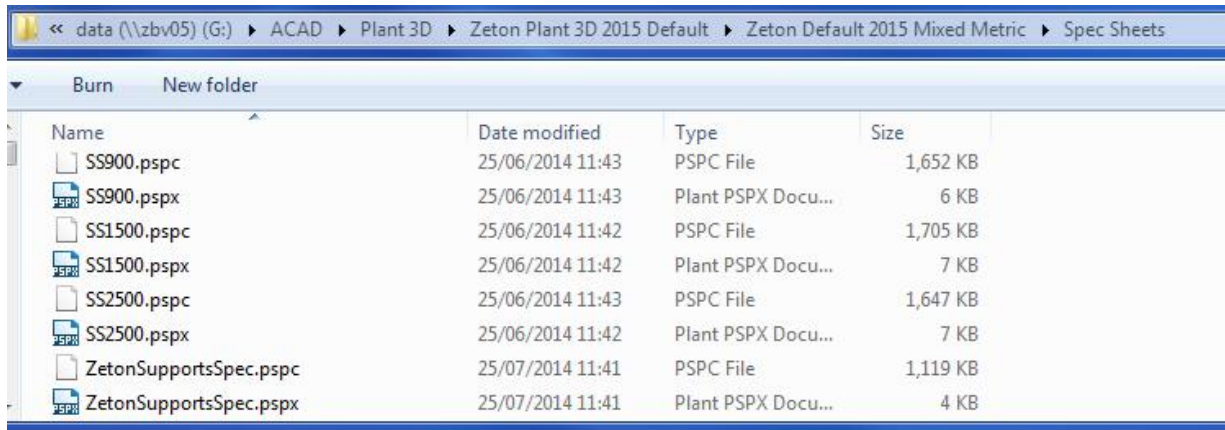
I can see the model (picture) in the toolpalette but I can't select the support (no reaction)

What could be the solution to fix this problem?

Location standard autodesk pipesupportspec:



zetonSupportSpec at same location as pipespec.'s.



In Plant3D I see the ZetonSupportSpec, but not the autodesk pipesupportspec in spec viewer:



See spec viewer:


Spec: ZetonSupportsSpec

Min Size	To	Max Size	Long Description
Spec: ZetonSupportsSpec			
Description:			
File Location: G:\ACAD\Plant 3D\Zeton Plant 3D 2015 Default\Zeton Default 2015 Mixed Metric\Spec Sheets\ZetonSupportsSpec.psp			
Last Saved: 25/07/2014 11:41:36			
----- Support -----			
1/8"	to	60"	Adjustable Bolted Stanchion
1/8"	to	60"	Adjustable pipe roller support w. ba
1/8"	to	60"	Adjustable pipe roller support w. ro
1/8"	to	60"	Adjustable pipe roller support w. ro
1/8"	to	60"	Adjustable Welded Stanchion
1/8"	to	60"	Alignment guide
1/8"	to	60"	Beam Bolted Hanger
1/8"	to	60"	Beam Bolted Hanger 2
1/8"	to	60"	Beam Bolted Hanger w. pipe roller
1/8"	to	60"	Beam Bolted Trapeze Hanger
1/8"	to	60"	Beam Clamp Hanger
1/8"	to	60"	Beam Clamp Hanger 2

Next page.....

1/8"	to	60"	Pipe slide / Pipe anchor
1/2"	to	1"	RS-1-SS-P-100
1/8"	to	60"	Saddled slide 1/ Saddled anchor 1
1/8"	to	60"	Saddled slide 2/ Saddled anchor 2
1/8"	to	60"	Saddled slide 3/ Saddled anchor 3
1/8"	to	60"	Side Clamped Stanchion
1/8"	to	60"	Simple Pipe Support
1/8"	to	60"	Single riser support
1/8"	to	60"	Sprina hanger

Part Sizes		
Size	Long Description	Spec Default
1/2"	RS-1-SS-1/2"-P-100	<input type="checkbox"/>
3/4"	RS-1-SS-3/4"-P-100	<input type="checkbox"/>
1"	RS-1-SS-1"-P-100	<input type="checkbox"/>



Part details

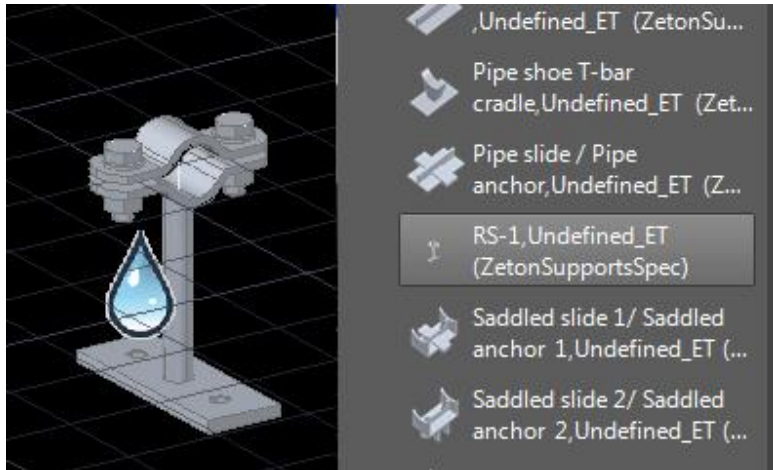
Part Type: RS-1

End Connection: Undefined

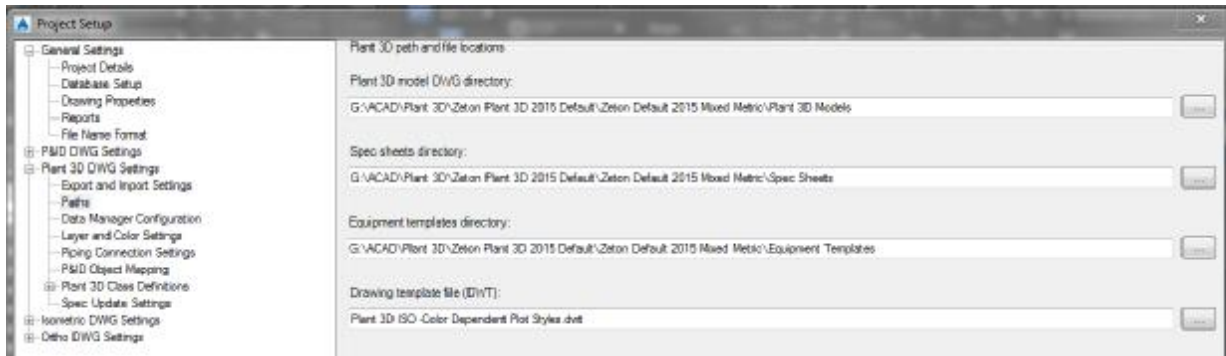
Material Grade:

Rating:

Support placed with spec viewer:



Left: support placed spec viewer, Right: support in toolpalette (it's visable in toolpalette, but can't select or placed).



Next page.....

Zeton support properties:

autodesk support properties

PipeInlineAsset in stead of support

The screenshot shows the 'Pipe Inline Asset' properties panel. It is organized into several sections: General, 3D Visualization, Plant 3D, Tag, and another General section. The 'General' section includes properties like Color, Layer, Linetype, Linetype scale, Plot style, Lineweight, EntityTransparency, and Hyperlink. The '3D Visualization' section includes Material and Shadow display. The 'Plant 3D' section includes Class, Size, and Spec. The 'Tag' section includes Line Number Tag and Tag. The second 'General' section includes Short Description, Long Description, Insulation properties, Service, Status, Weight, and Tracing properties.

General	
Color	ByLayer
Layer	0
Linetype	ByLayer
Linetype scale	1
Plot style	ByColor
Lineweight	ByLayer
EntityTransparency	ByLayer
Hyperlink	

3D Visualization	
Material	ByLayer
Shadow display	Casts and Receives Sh...

Plant 3D	
Class	Support
Size	3/4"
Spec	ZetonSupportsSpec

Tag	
Line Number Tag	Unassigned
Tag	?-?

General	
Short Description	RS-1
Long Description...	RS-1-SS-3/4"-P-100
Long Description...	RS-1-SS-P-100
Insulation Thickn...	?
Insulation Type	?
Service	?
Compatible Stan...	
Content Iso Symb...	TYPE=SUPPORT,SKEY=...
Design Pressure F...	
Design Std	
Flange Thickness	
Item Code	
Manufacturer	
Status	New
Weight	
Weight Unit	KG
Insulation Spec	?
Shop/Field	SHOP
Spool Number	
Tie In Number	
Tracing Spec	?
Tracing Type	?
Unit	
Comment	
Fixed	
Max Length	
Min Length	
Part Subtype	Support - Support
Reference	
Support Detail	

The screenshot shows the 'Support' properties panel. It is organized into several sections: General, 3D Visualization, Plant 3D, Tag, and another General section. The 'General' section includes properties like Color, Layer, Linetype, Linetype scale, Plot style, Lineweight, EntityTransparency, and Hyperlink. The '3D Visualization' section includes Material and Shadow display. The 'Plant 3D' section includes Class, Size, and Spec. The 'Tag' section includes Line Number Tag and Tag. The second 'General' section includes Short Description, Long Description, Insulation properties, Service, Status, Weight, and Tracing properties.

General	
Color	ByLayer
Layer	0
Linetype	ByLayer
Linetype scale	1
Plot style	ByColor
Lineweight	ByLayer
EntityTransparency	ByLayer
Hyperlink	


3D Visualization	
Material	ByLayer
Shadow display	Casts and Receives Sh...

Plant 3D	
Class	Support
Size	3/4"
Spec	PipeSupportsSpec

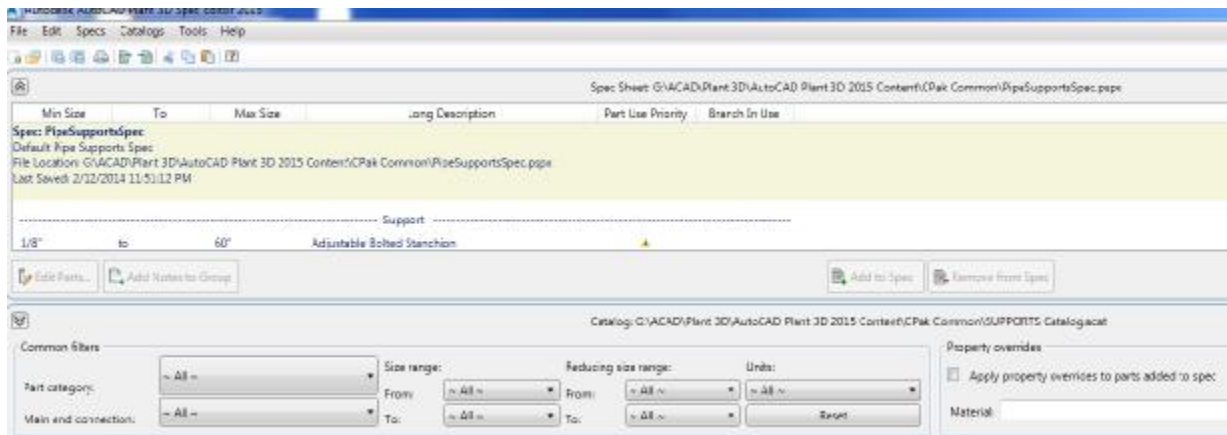
Tag	
Line Number Tag	Unassigned
Tag	?-?

General	
Short Description	Simple Pipe Support
Long Description...	Simple Pipe Support, 3...
Long Description...	Simple Pipe Support
Insulation Thickn...	?
Insulation Type	?
Service	?
Compatible Stan...	
Content Iso Symb...	TYPE=SUPPORT,SKEY=...
Design Pressure F...	
Design Std	
Flange Thickness	
Item Code	
Manufacturer	
Status	New
Weight	
Weight Unit	KG
Insulation Spec	?
Shop/Field	SHOP
Spool Number	
Tie In Number	
Tracing Spec	?
Tracing Type	?
Unit	
Comment	
Fixed	
Max Length	
Min Length	
Part Subtype	Support - Support
Reference	
Support Detail	

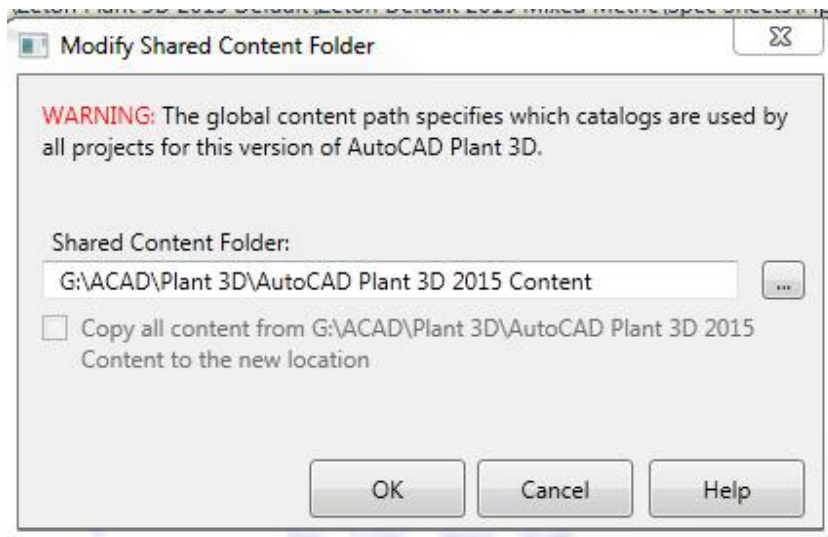
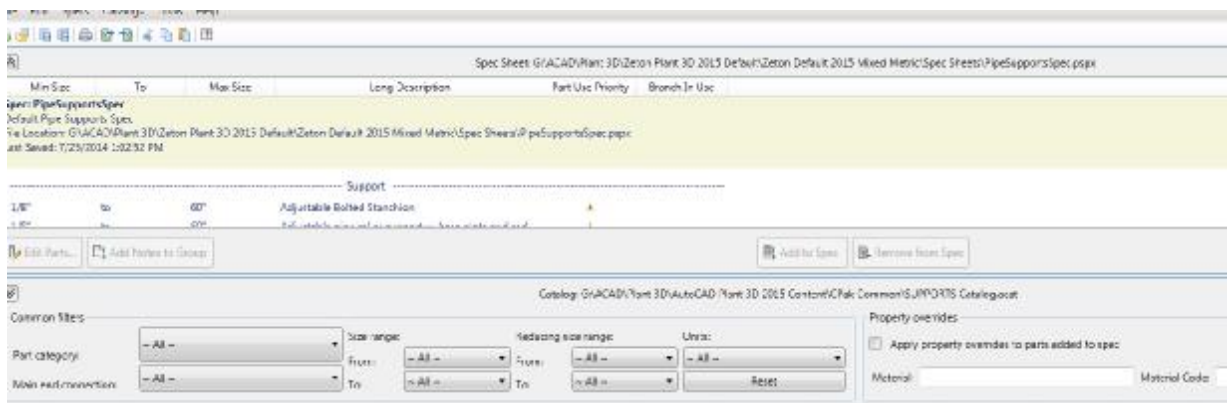
Pipe Inline Asset	
Min Length	
Part Subtype	Support - Support
Reference	
Support Detail	
SUPPORTNUMBER	
Support Type	
Process Line	
Insulation Thickn...	
Insulation Type	
Center of Gravity X	
Center of Gravity Y	
Center of Gravity Z	
Insulation Spec	
Locked Line Status	Unlocked
Lock Change By	
Lock Change At	
Tracing Spec	
Tracing Type	
Weight	
Weight Unit	KG
Part Properties	
Part Geometry	
X Coordinate (Por...	2347.3095
Y Coordinate (Por...	4528.907
COP Elevation (P...	0
Bottom of Pipe	-13.335
Top of Pipe	13.335
Length	
Center of Gravity X	2347.3095
Center of Gravity Y	4528.907
Center of Gravity Z	-47.85
Part Data	
Material	
Material Code	
Pressure Class	
Port Properties	
End Type1	Undefined_ET
Engagement Len...	0
Facing1	
Flange Std1	
Flange Thickness1	
Gasket Std1	
Port Unit1	mm
Matching Pipe O...	26.67
Nominal Diamete...	0.75
Nominal Unit1	in
Port Name1	S1
Pressure Class1	
Schedule1	
Wall Thickness1	

Support	
Min Length	
Part Subtype	Support - Support
Reference	
Support Detail	
SUPPORTNUMBER	
Support Type	
Process Line	
Insulation Thickn...	
Insulation Type	
Center of Gravity X	
Center of Gravity Y	
Center of Gravity Z	
Insulation Spec	
Locked Line Status	Unlocked
Lock Change By	
Lock Change At	
Tracing Spec	
Tracing Type	
Weight	
Weight Unit	KG
Part Properties	
Part Geometry	
Preview	
Dimensions	
D	26.67
L	11.6586
W	0.4572
X Coordinate (Por...	3110.7305
Y Coordinate (Por...	4371.0726
COP Elevation (P...	0
Bottom of Pipe	-13.335
Top of Pipe	13.335
Length	
Center of Gravity X	3110.7305
Center of Gravity Y	4371.0726
Center of Gravity Z	0
Part Data	
Material	
Material Code	
Pressure Class	
Port Properties	
End Type1	Undefined_ET

Location autodesk supportspec under Plant3DContent folder:



Location autodesk support spec under default project:



Verschil tussen pcat en acat files.

.pcat en .acat-files could this be the solution?

Understand Spec and Catalog Files

The AutoCAD Plant 3D Spec Editor file formats:

- AutoCAD Plant 3D Spec Files (*.pspx, *.pssc). PSPX and PSSC files are a pair, and must be copied and managed together. You cannot rename spec files.
- AutoCAD Plant 3D Catalog File (*.pcat). PCAT files contain catalog part information.
- Auxiliary Catalog File (*.acat). ACAT files contain catalog parts that support AutoCAD Plant 3D but are not added to a spec. For example, equipment nozzles, and pipe supports.

When you work in the editor, the changes you make are not immediately saved. To commit changes, you save the file. If you want to undo changes, you can close the spec sheet without saving.

Catalog Builder Introduction

👍 LIKE (0) 🗨️ SHOW

The AutoCAD Plant 3D Catalog Builder allows CAD managers and expert users to create piping component content quickly.

You can create new PCAT catalog files or add content to an existing PCAT catalog. You can also create and share content packs like the ones available on Plant Exchange: [AutoCAD Plant 3D Content Packs](#)

The Catalog Builder is not intended to replace the AutoCAD Plant 3D Spec Editor, which can also be used to modify PCAT catalog files. The Catalog Builder supports creating a large amount of content at once and requires the use of Microsoft Excel to provide detail for components.

The Catalog Builder does not support all features of the Spec Editor. For example, you cannot assign valve operators and **you cannot modify ACAT auxiliary catalog files**.