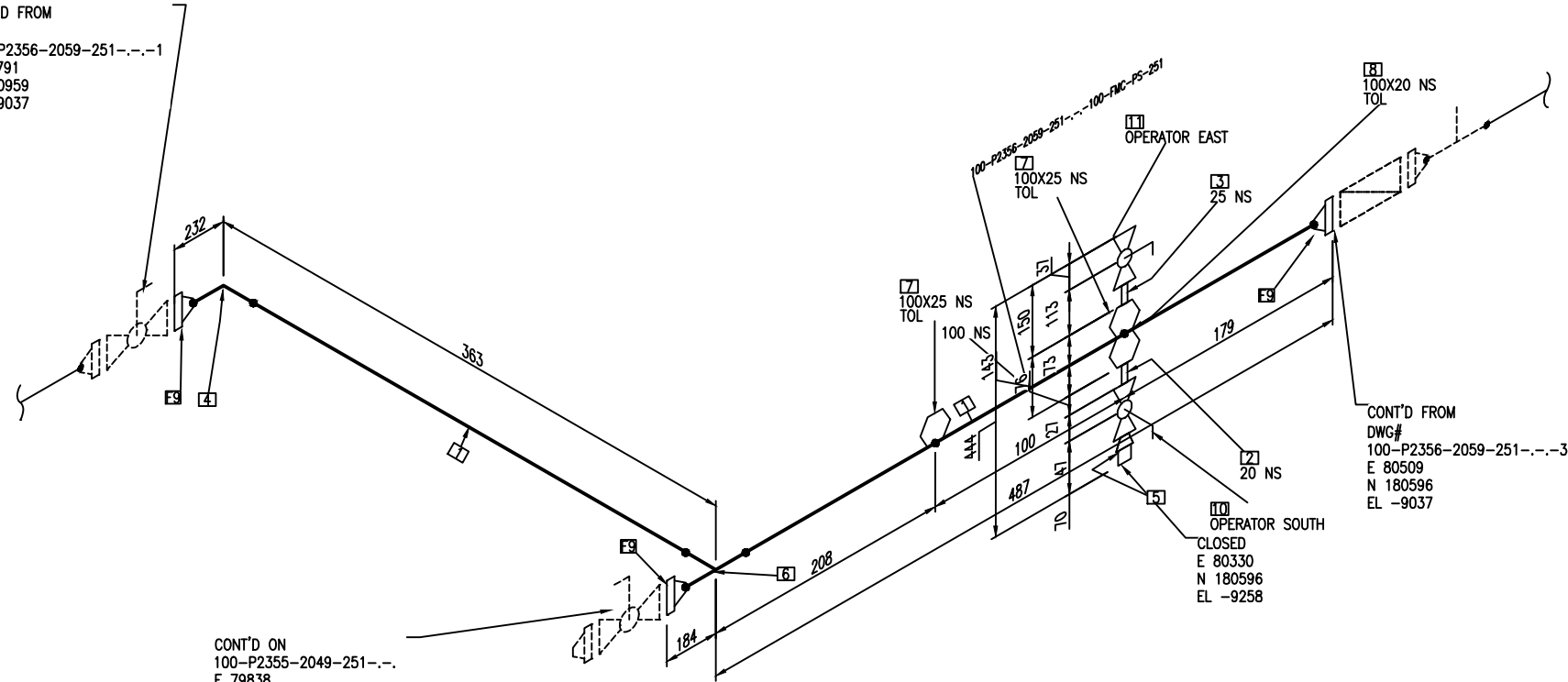




CONT'D FROM
 DWG#
 100-P2356-2059-251-.-.-1
 E 79791
 N 180959
 EL -9037




CONT'D ON
 100-P2355-2049-251-.-.-
 E 79838
 N 180596
 EL -9037

BILL OF MATERIALS			
ID	QTY	ND	DESCRIPTION
1	0.4M	100	PIPE, SEAMLESS, STD, BE, ASME B36.10
2	1	20	PIPE NIPPLE, SMLS, MPT, SCH 80, 3" LG ASTM A733
3	1	25	PIPE NIPPLE, SMLS, MPT, SCH 80, 6" LG ASTM A733
4	1	100	ELL 90 LR, BW, STD, ASME B16.9
5	1	20	PLUG, SQUARE HEAD, MPT, ASME B16.11
6	1	100	TEE, BW, STD, ASME B16.9
7	2	100X25	THREADOLET, 3000 LB, FPT, ASME B16.11
8	1	100X20	THREADOLET, 3000 LB, FPT, ASME B16.11
9	3	100	FLANGE WN, 150 LB, RF, STD, ASME B16.5
10	1	20	BALL VALVE, 2000 LB WOG, FPT, API 607
11	1	25	BALL VALVE, 2000 LB WOG, FPT, API 607

LEGEND:
 FLANGE, BOLT, AND GASKET IDENTIFIER EXAMPLE:
 F1 B2 G3
 GASKET BOM ID NUMBER
 BOLT BOM ID NUMBER
 FLANGE BOM ID NUMBER

- NOTES:
1. WORK THIS DRAWING WITH P&ID'S PID-001 THRU PID-880.
 2. SEE DRAWING P-GN-000 FOR PIPING GENERAL NOTES.
 3. SEE DRAWING P-PS-000 FOR PIPE SUPPORT DETAILS AND NOTES.

 **SUPERIOR ENGINEERING, LLC**
 Consulting Engineers

PROJECT	SHEET	PLOT DATE
898002		01/10/2014

FMC SEAHORSE PHASE I
KOCAELI, TURKEY

PROJECT NAME:	NEW BLENDING FACILITY						
TITLE:	PIPING ISOMETRIC						
DRAWING NUMBER:	100-P2356-2059-251-.-.-2						
LINE NO.:	100-P2356-2059-251-.-.-						
SUPERIOR ENGINEERING JOB NUMBER:	898002	SCALE:	N.T.S.	SHEET:	2 of 3	REV.	A

**ISSUED FOR
 REVIEW AND
 COMMENT**

01/10/2014

REV.	DESCRIPTION	DATE	DRAWN	CHKD	APPD
A	ISSUED FOR REVIEW & COMMENT	01/14/2010	S/E	S/E	S/E

C:\Users\ANTMOL\Desktop\SEAHORSE\ISO TEST\2014-02-27\100-P2356-2059-251-.-.-2.dwg