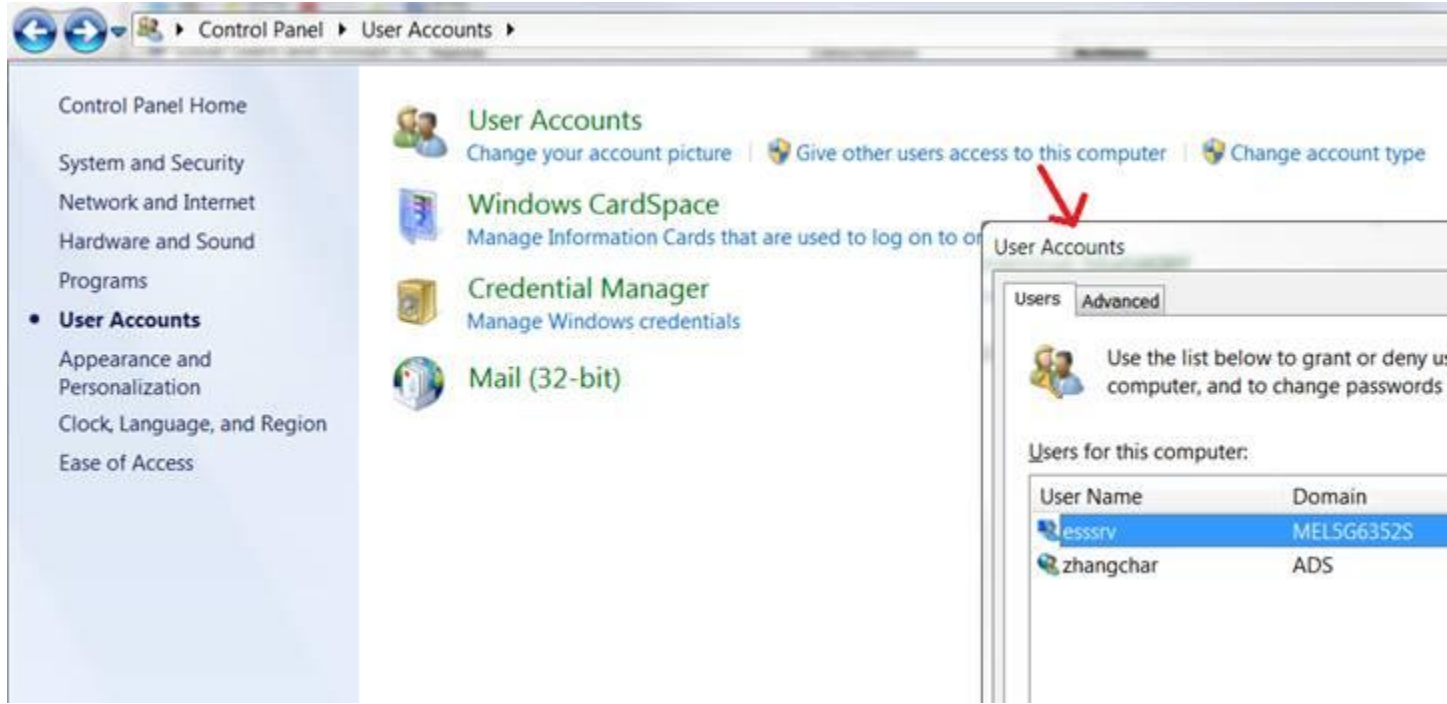
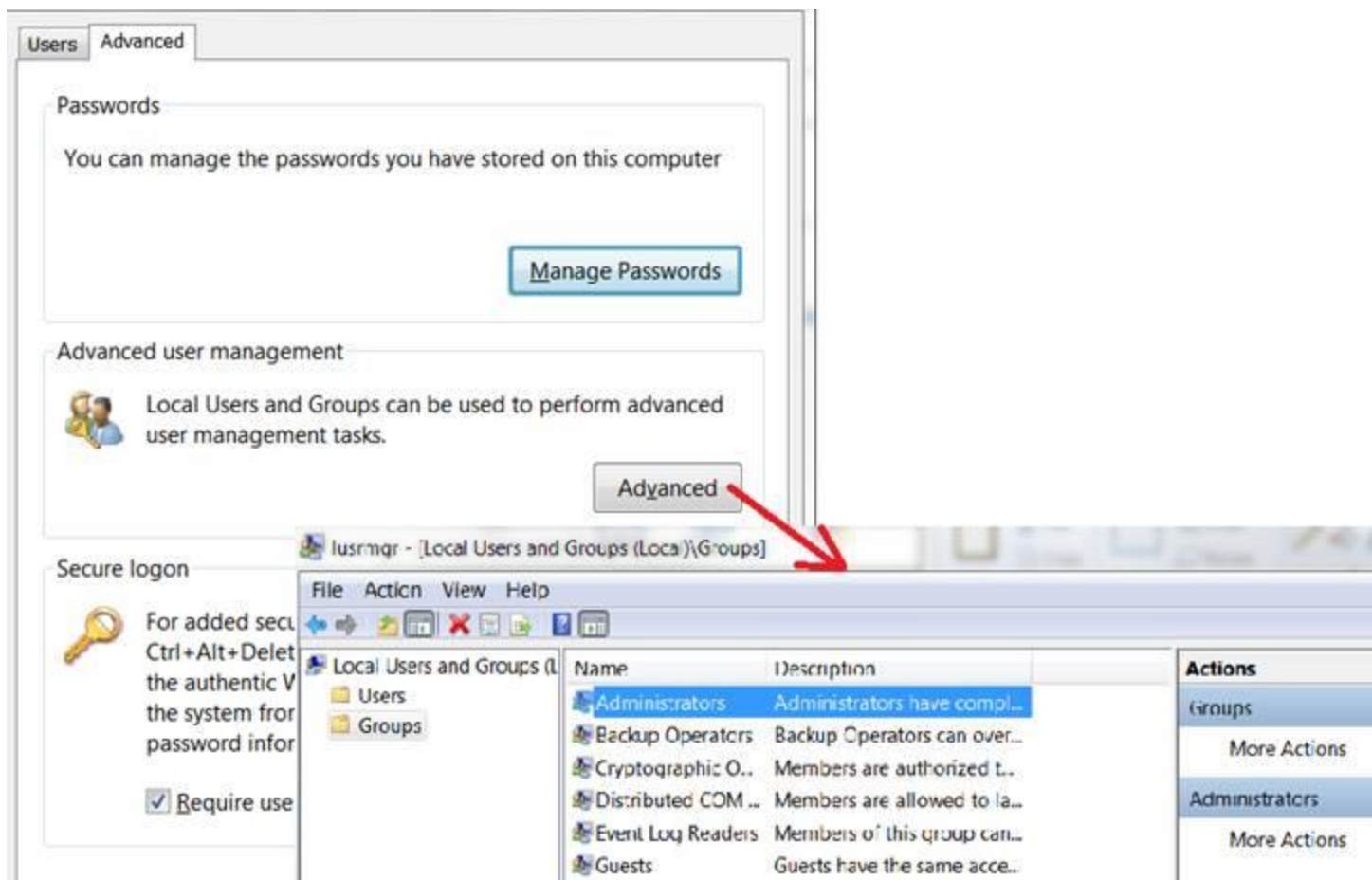


There are three things you need to check:

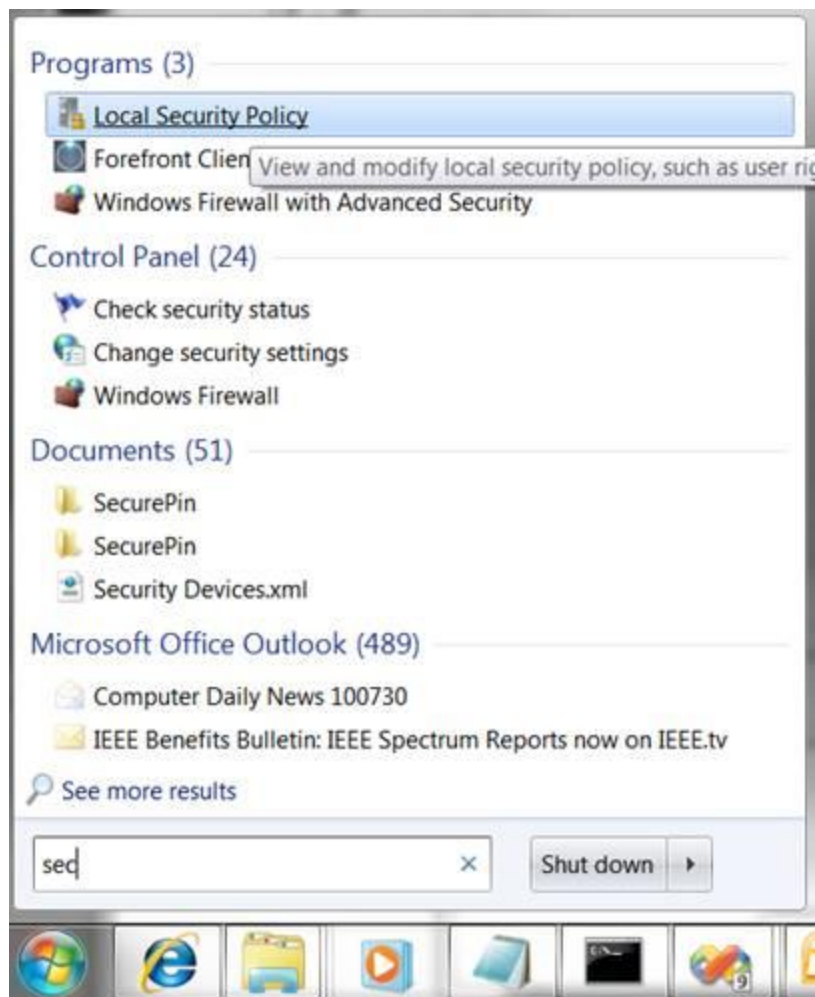
1. If the login user is in administrators group, if not then added login user to administrators group
through “Advanced” Tab



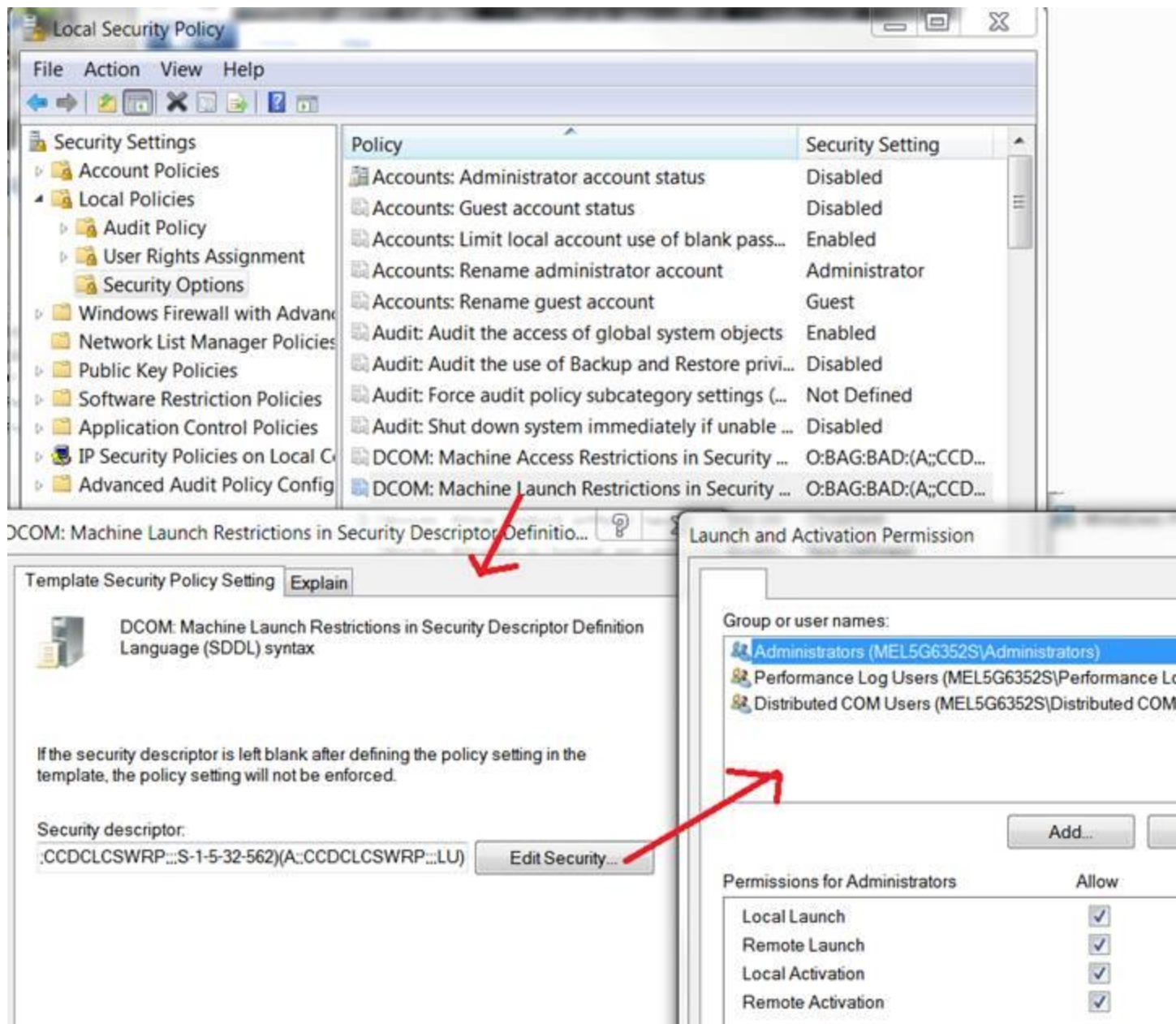
Add login user into Administrators group



2. Check DCOM local security policy

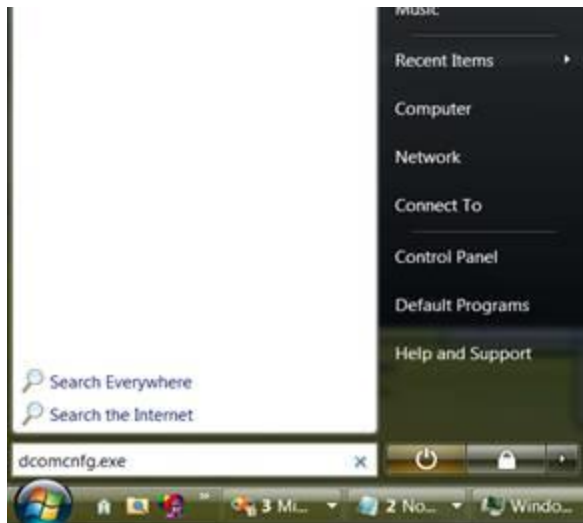


Make sure Administrators group of local machine has the right to access and launch the DCOM.

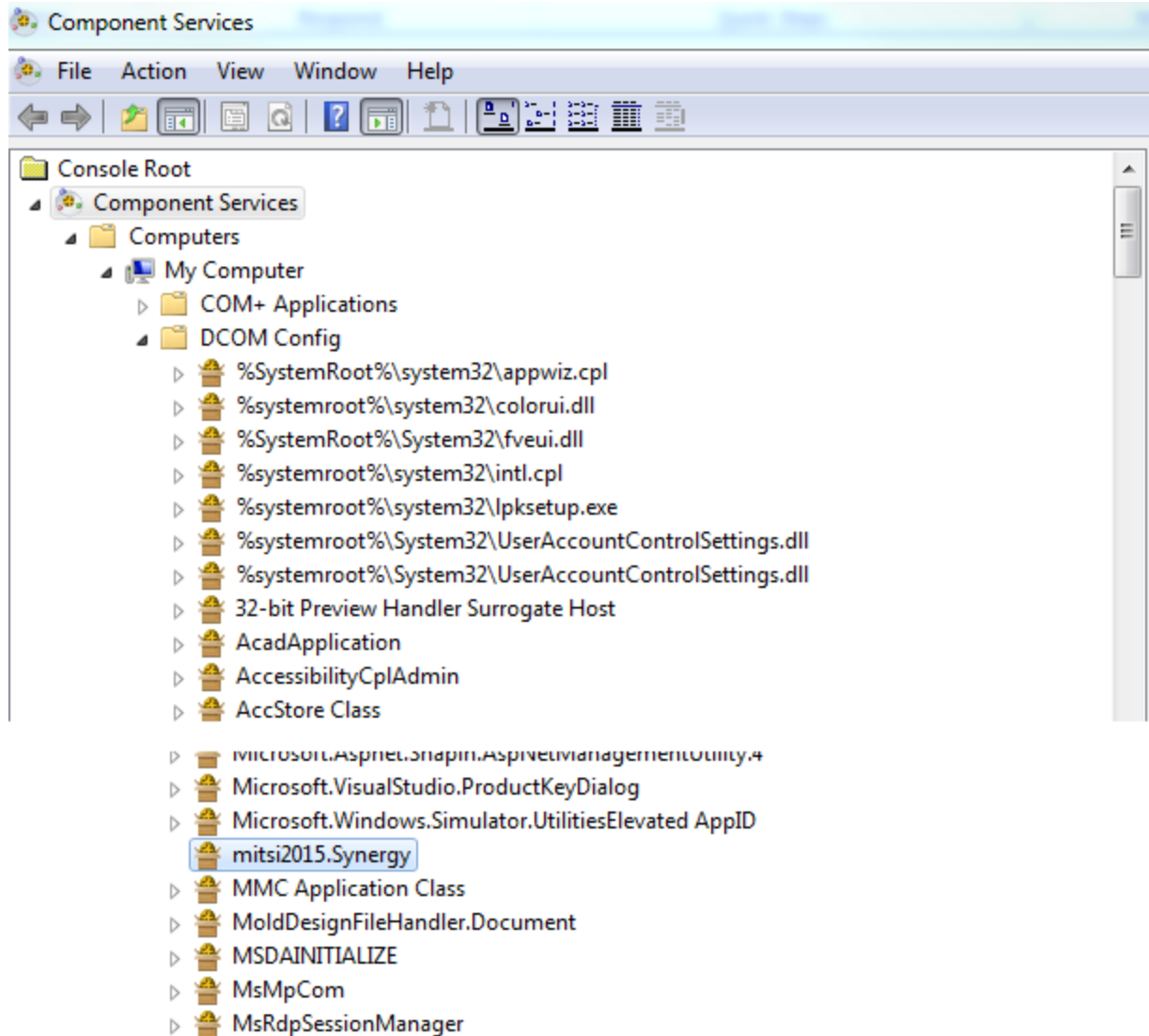


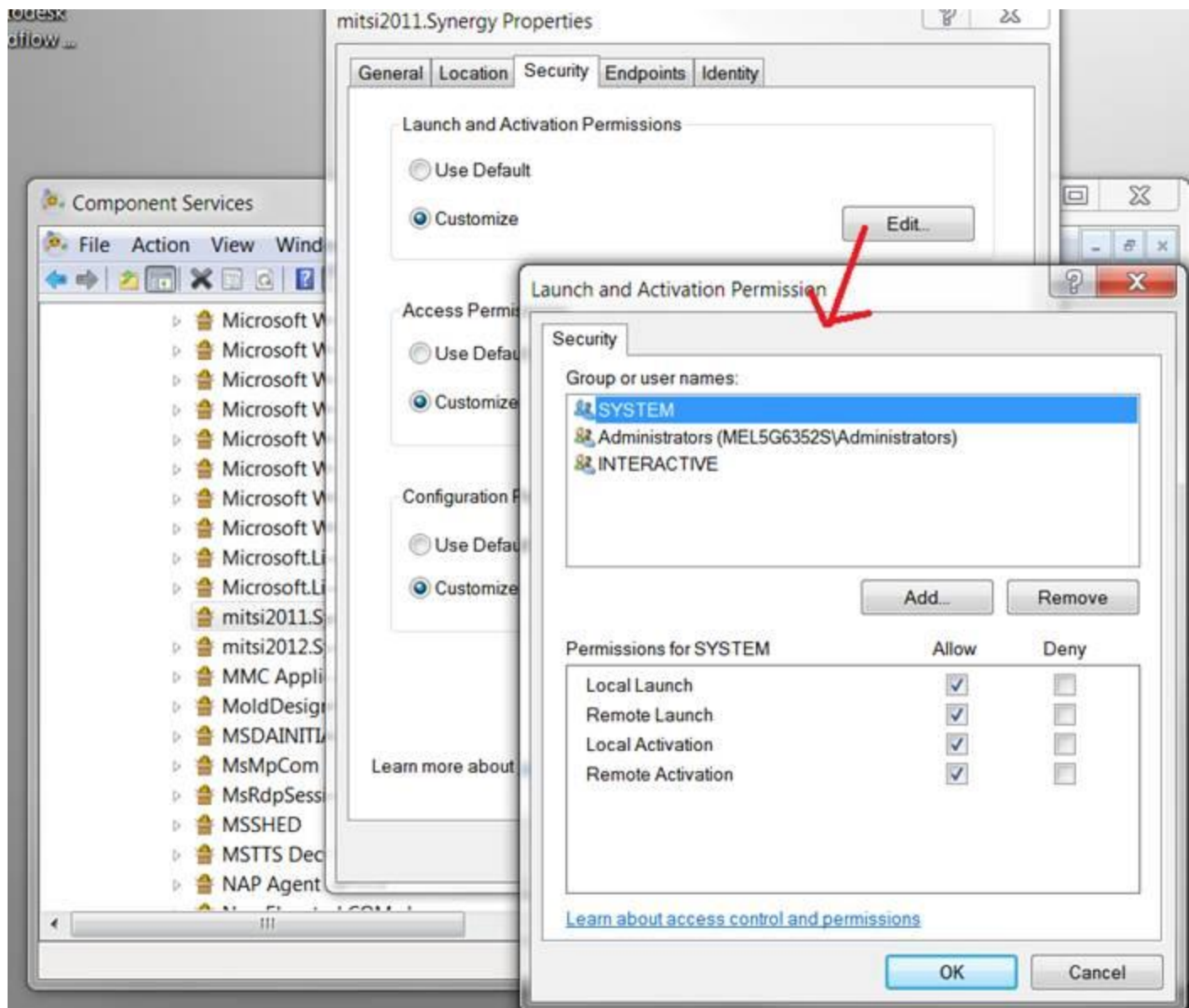
After above settings are all set, mitsi.exe should be able to start by Inventor. (I have tried if I uncheck "Local Launch" and "Local Activation", when I click "select material" I'll have that error message)

If it's still not working, make sure mitsi2011.synergy can be launched and activated by Administrators.
 1) from window start type in dcomcnfg.exe



2 wait until Component Services window appears then from DCOM Config to check if mitsi2015.Synergy is in the list





Regards,
Charlie