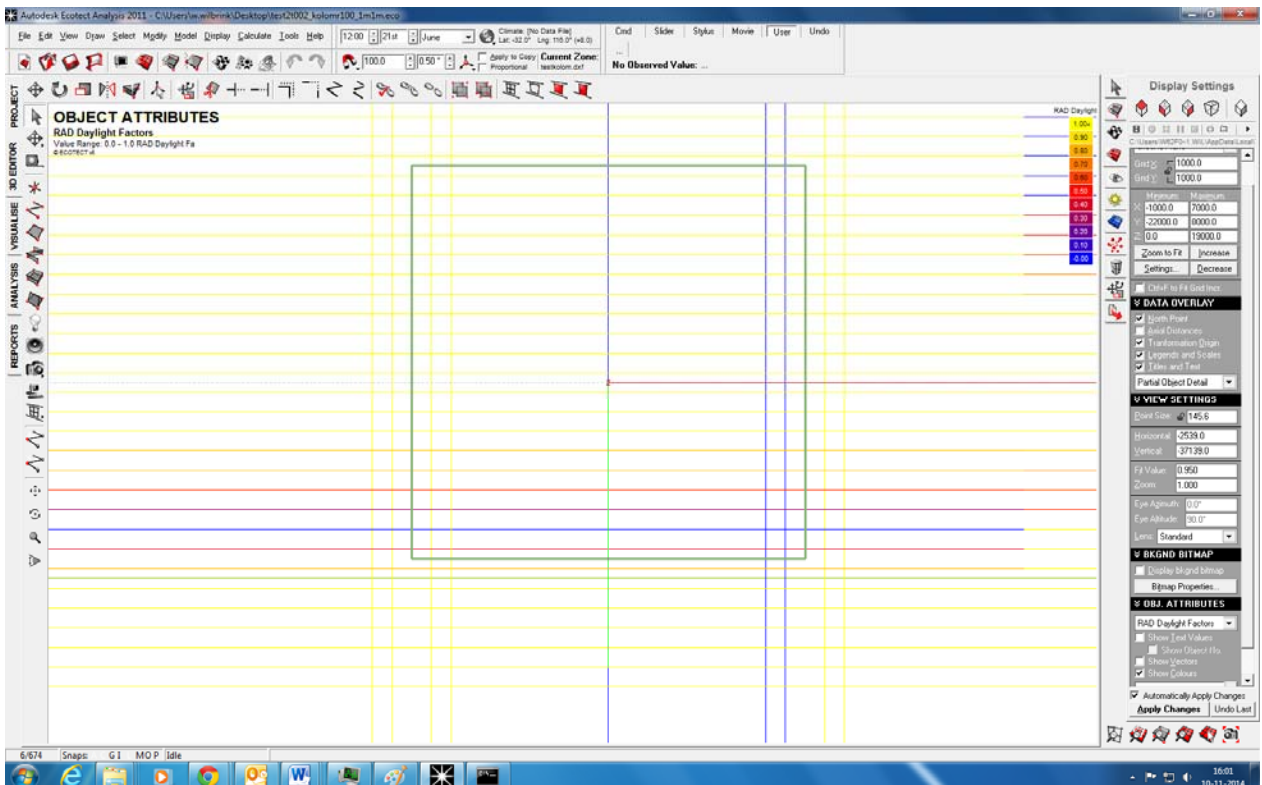
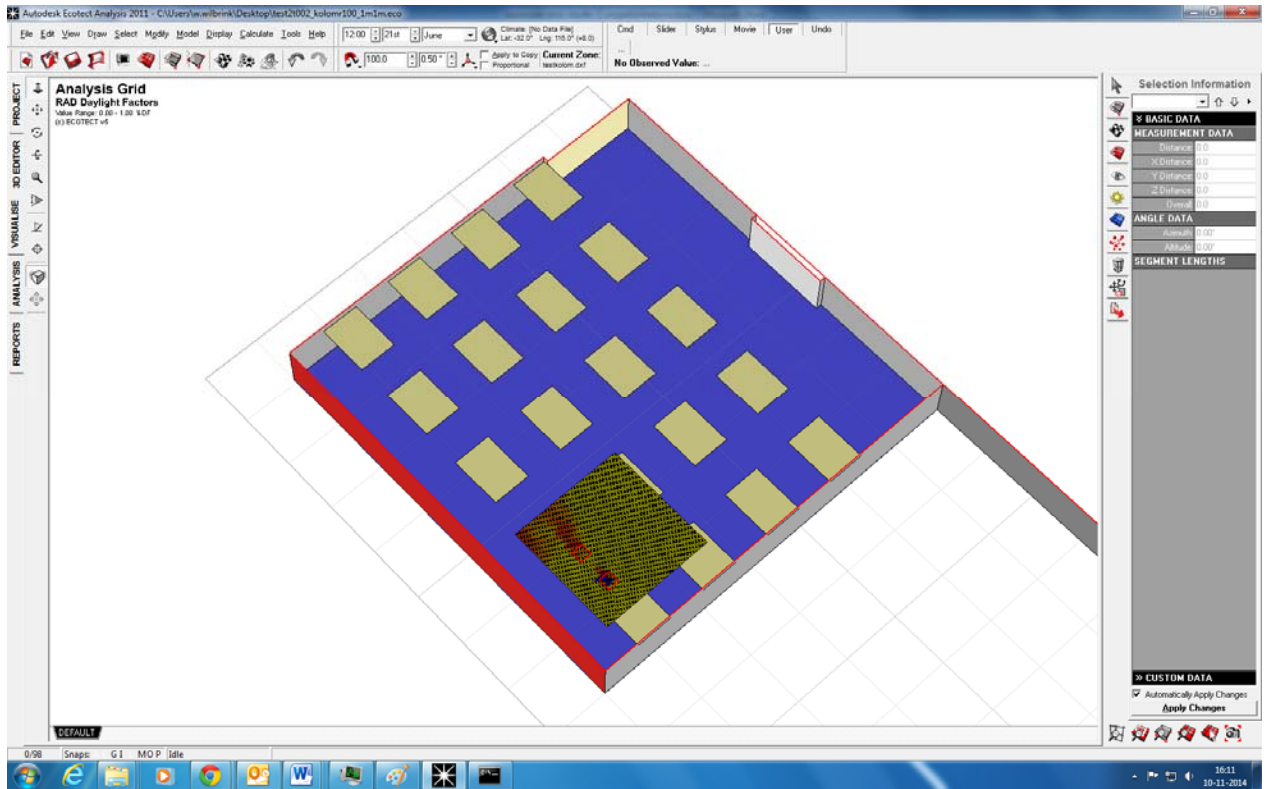


These are the gridresults with a daylightfactor in %, yellow is 1% blue is 0% (gridspacing is approximately 20mm between points)



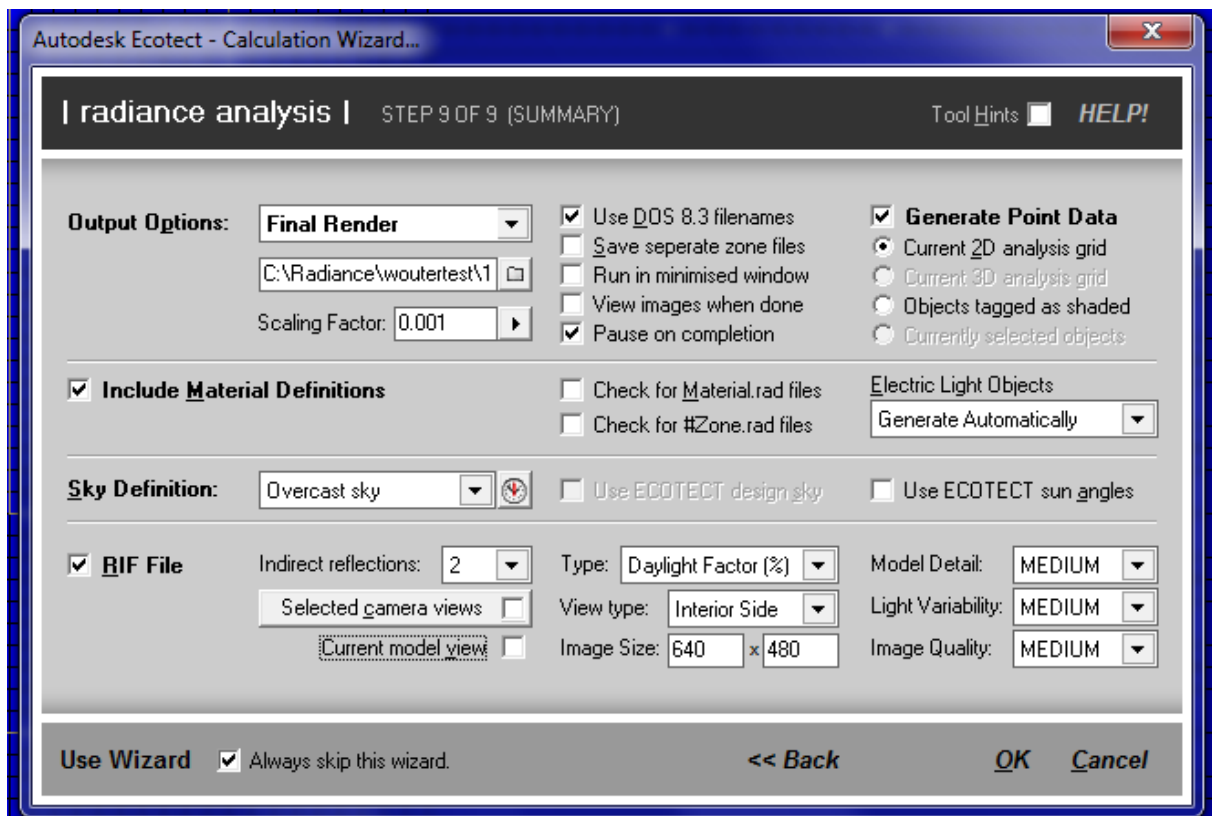
Single point results, Green square is the column (spacing between points is 10mm, the points at the outside of the column are excluded and as you can see i did not make a complete grid)



Model overview

Rtrace settings (step 8/9)

-l=
-h=
-dp=2048
-ar=32
-ms=0.063
-ds=.2
-dt=.05
-dc=.75
-dr=3
-sj=1
-st=.01
-ab=8
-aa=.1
-ad=512
-as=256
-av=0 0 0
-lr=12
-lw=.0005



Settings step 9/9 (for single point the same with currently selected objects in place of current 2d grid)