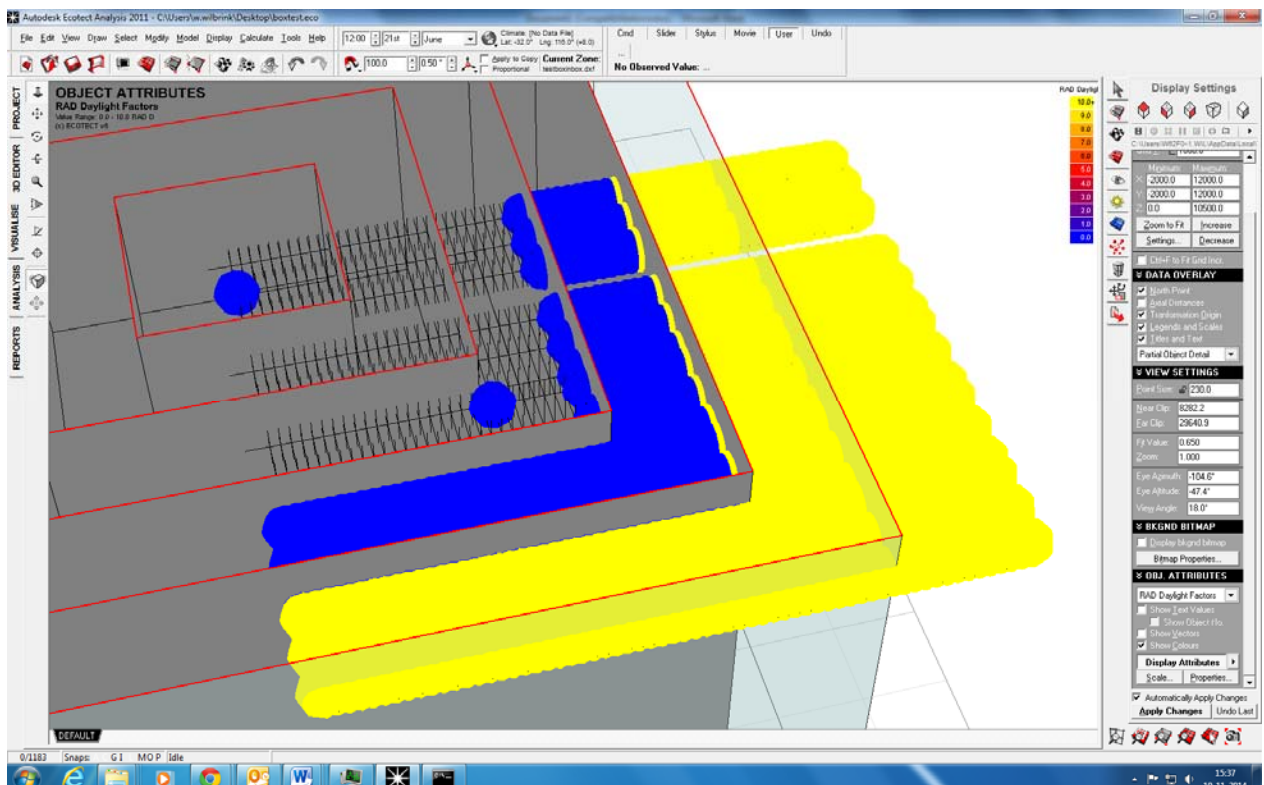
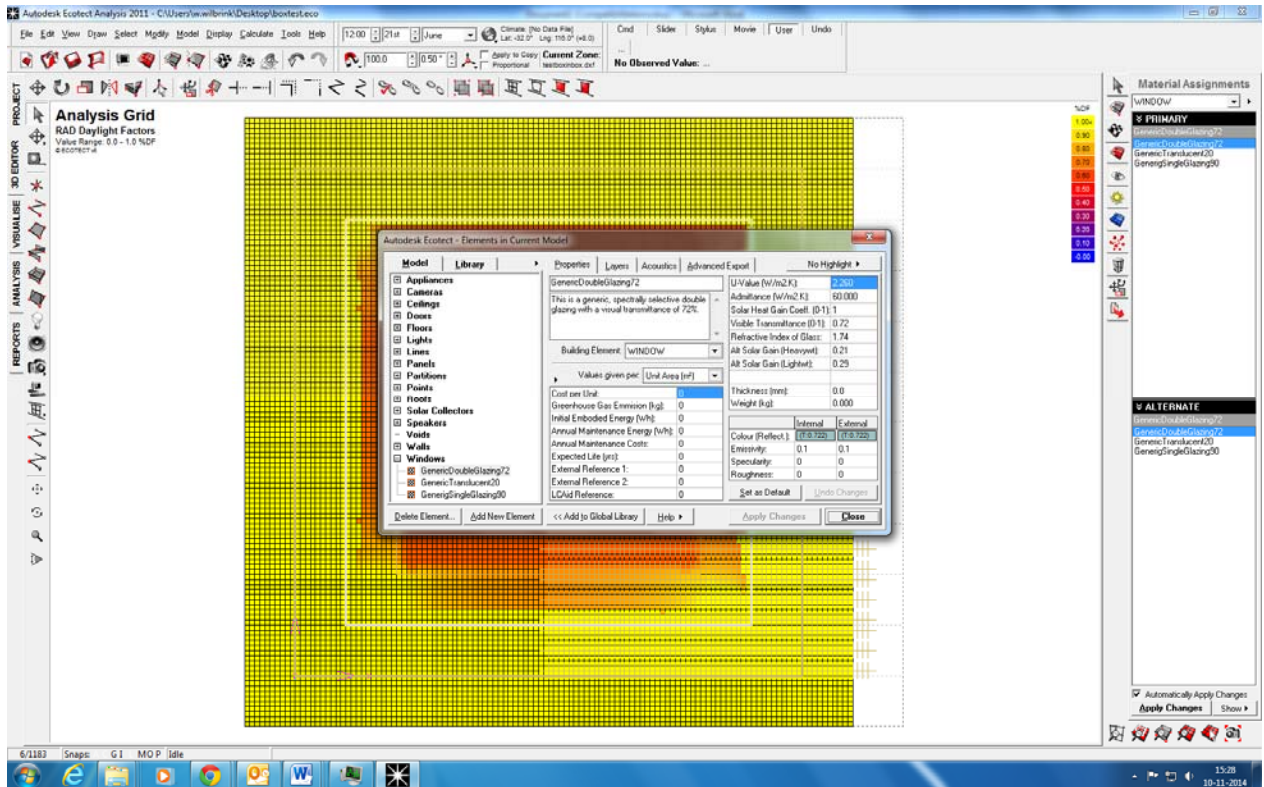


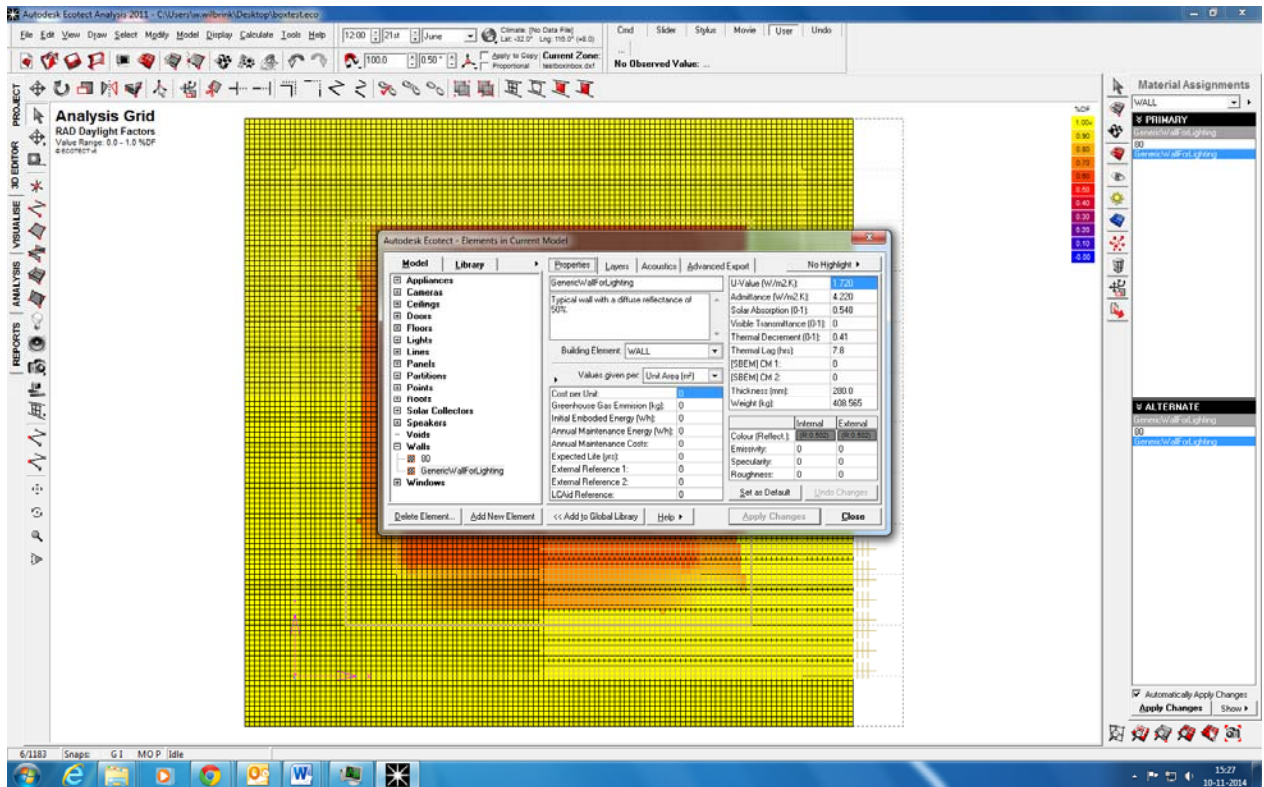
These are the gridresults with a lowest result that i could find of 0,66% (gridsize is 100mm between points)



These single point results seem correct (they do give a daylightfactor but are extremely low) (spacing between points is 100mm on the x-axis, on the y-axis 1 point between 2 walls and 1 point 100mm on either side of the wall)



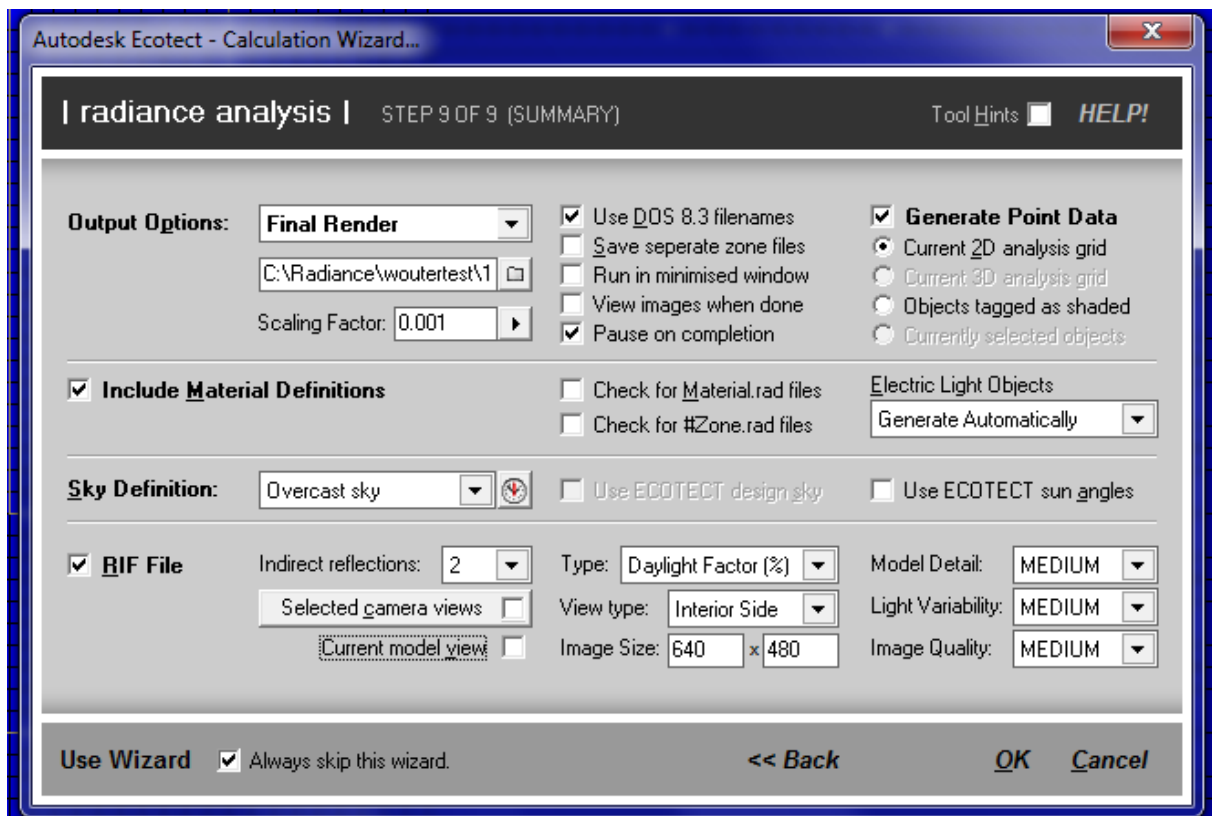
The outer box is this material



All the inner boxes are this material

Rtrace settings (step 8/9)

-l=
-h=
-dp=2048
-ar=32
-ms=0.063
-ds=.2
-dt=.05
-dc=.75
-dr=3
-sj=1
-st=.01
-ab=8
-aa=.1
-ad=512
-as=256
-av=0 0 0
-lr=12
-lw=.0005



Settings step 9/9 (for single point the same with currently selected objects in place of current 2d grid)