

## INSTALL & SETUP OF RADIANCE FOR ECOTECT AND RADTOOL...

comment posted by [craines](#) :: 19 May 2004 - 4:14pm

[Archived phorum post from [squ1.com](#) v2 by [craines](#)]

Ok Rochelle, lets step through it...

I know this is something we should probably do in a tutorial, but this will have to do for now. BTW I am not a RADIANCE user and have never ever done this process myself before, so this is going to be a pretty straight forward intro -- but better than nothing hopefully ☺

So here goes...

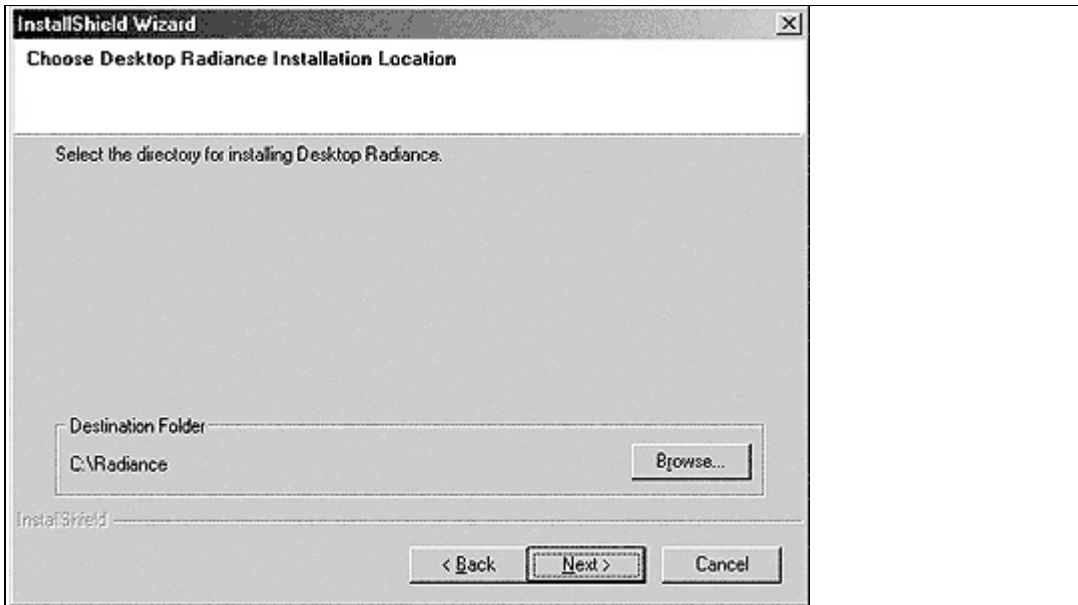
1. Go to the Desktop RADIANCE website (<http://radsite.lbl.gov/deskrad/>), go to the download page and choose the version you want to install -- I chose **Download Desktop Radiance 2.0 Beta** as it sounded pretty reasonable. You will then need to fill in LBNLs form and wait for their email to come through to you.

In case you are wondering, we are not going to install the full Desktop RADIANCE and we do not need AutoCAD etc. We will choose the bits we want later on during install as we only need the RADIANCE "engine".

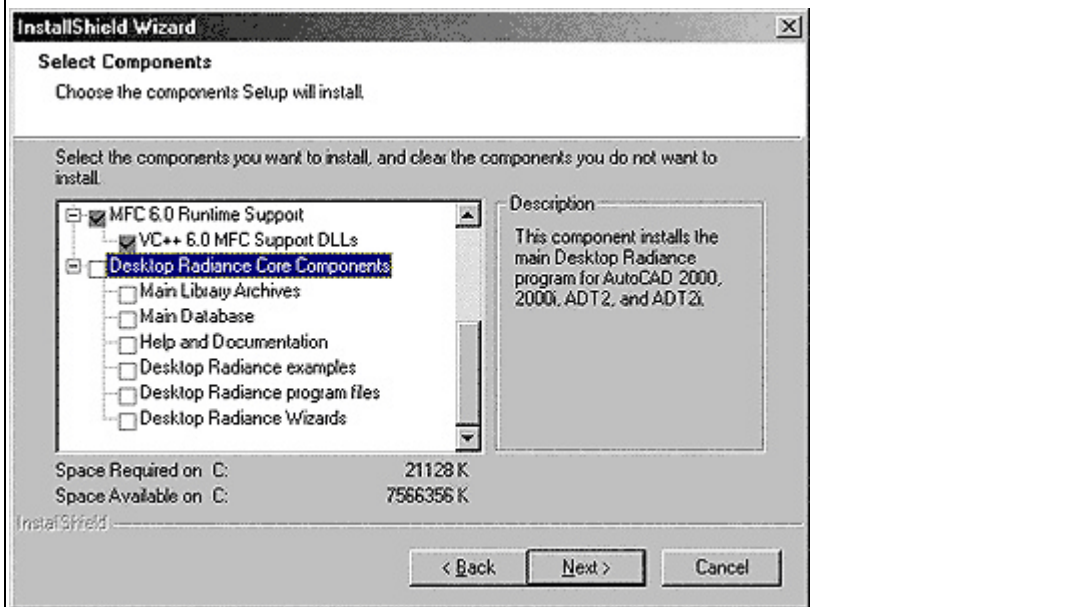
2. Use the password that you were emailed to unzip the download into any directory on your computer. Then double-click the **Setup.exe** file to start the install process.

3. First off it asks us for an Install Directory, best to choose **C:\Radiance** as this will keep things very straight forward and not cause you any hassles later on when rendering with RADIANCE.

On the next screen choose the **Custom Installation** option -- this will then let us decide to only have the RADIANCE "engine" rather than the AutoCAD Desktop RADIANCE version.

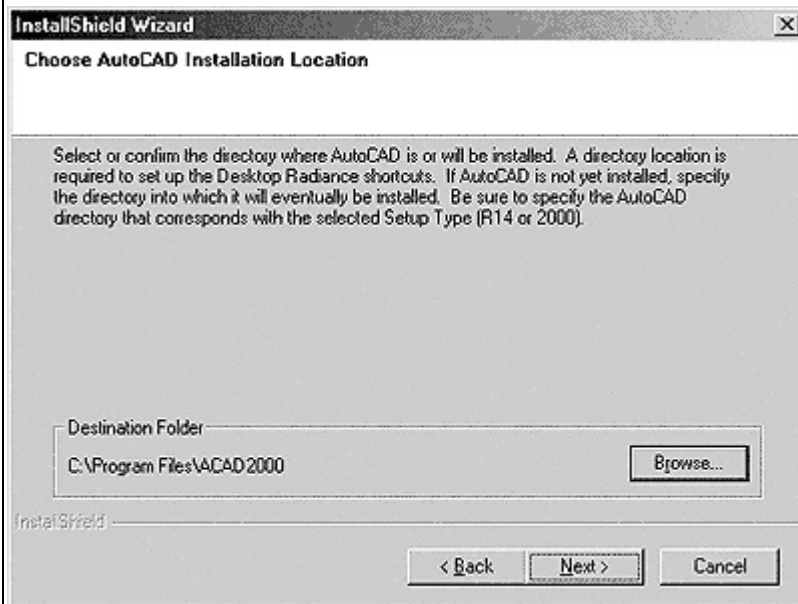


4. Next we need to select components. First **turn off Desktop RADIANCE Core Components**. Then only leave on the **MFC Runtime Section** (it wont let you turn it off), and the **RADIANCE for Windows Rendering Engine** -- you don't have to have the RADIANCE examples and documentation but these may be useful to refer to later...



5. Next it is going to ask you for a series of install directories. Most of these are not important as we aren't using the full Desktop RADIANCE, but there is one in particular

which is vital to get right -- the main RADIANCE installation directory. The locations I chose are as follows and shown in the image below:



- Choose AutoCAD installation location = C:\Program Files\ACAD2000\

(I only chose this cause I had it, but if you don't it doesn't matter just skip this for the next step)

- Choose the Desktop RADIANCE main database installation = C:\Radiance\Database\  
(again I don't think this matters for our non-desktop install)

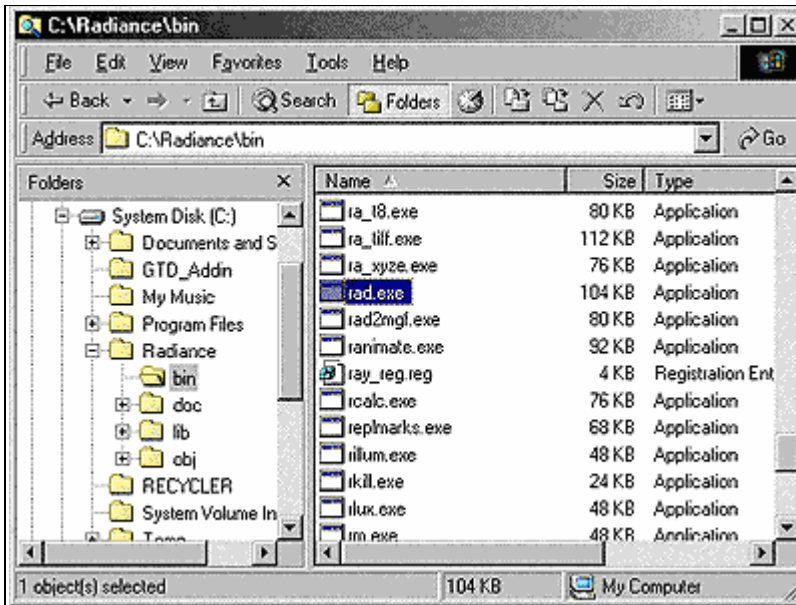
- Choose RADIANCE for Windows installation location = C:\Radiance\  
(It is **VERY IMPORTANT** you do not put spaces in this path. Our recommendation is the above, as again it will save you troubles later on down the line when using the software).

- Install Optics 5 = ??  
(I didn't have/want this either, so just left it as was)

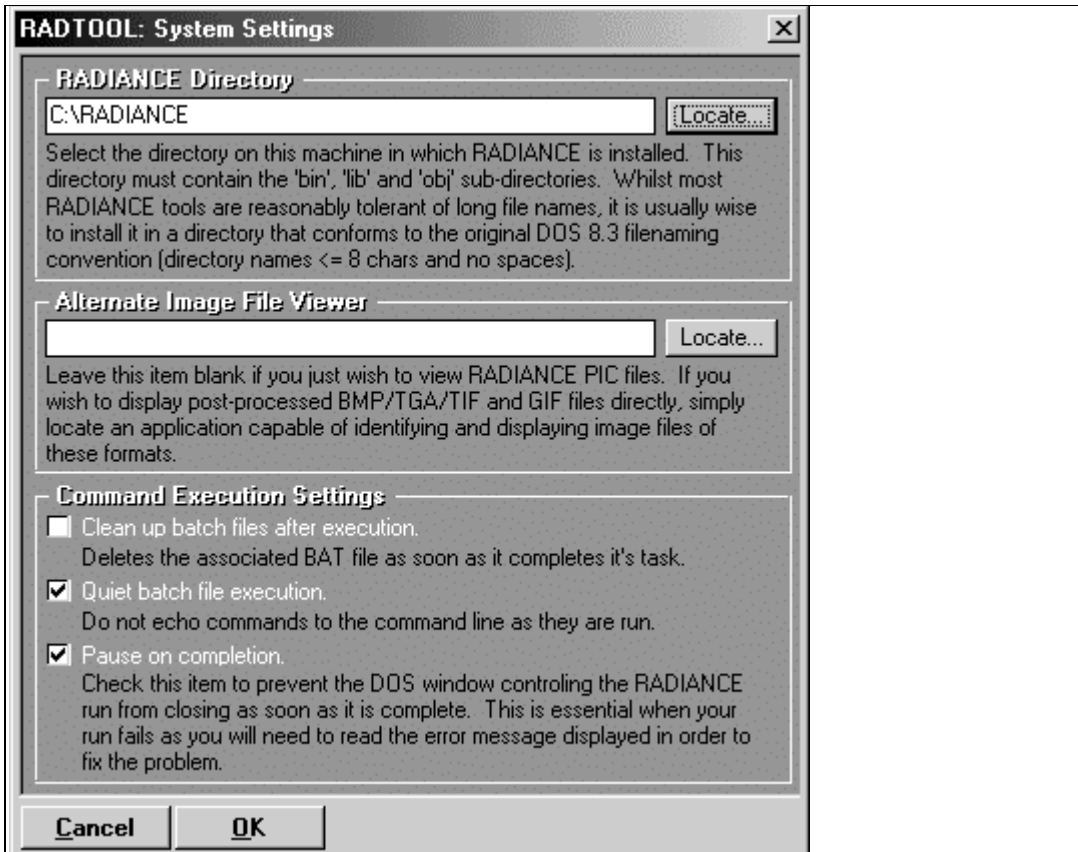
- Select Program Folder

(again not particularly relevant as we won't be using Desktop RADIANCE)

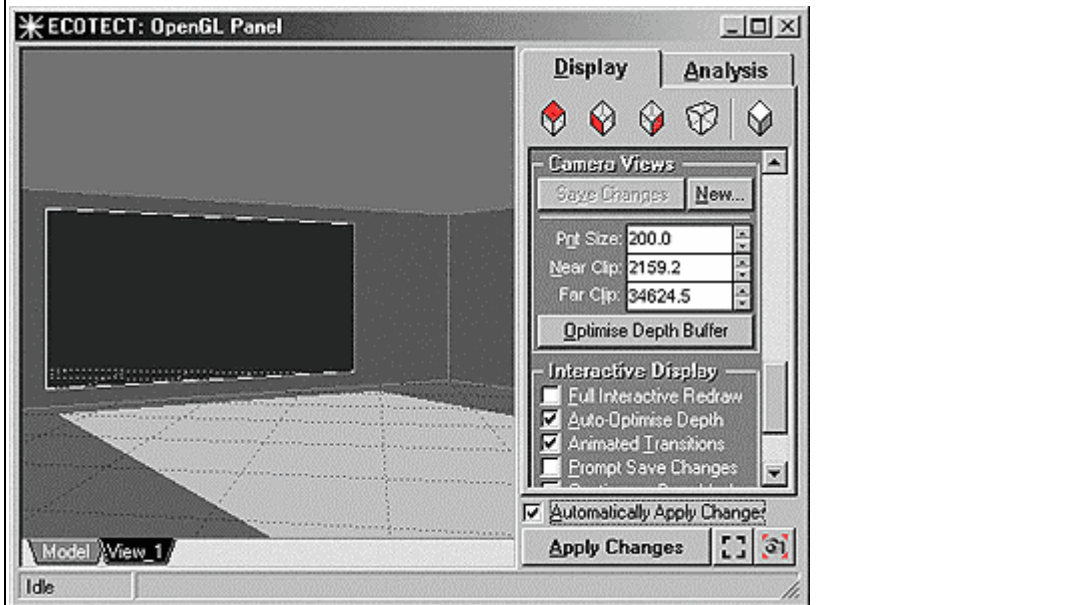
6. Then the install process will run through. Once that is done you will be able to navigate to the C:\Radiance\bin\ directory on your computer, and there you will find the infamous rad.exe. This means the RADIANCE engine is installed and you are ready to go with ECOTECT and the RadTool.



7. Load up RadTool (either from within ECOTECT or just on its own from the Start Menu) and choose the **Settings** button. Make sure the RADIANCE Directory matches the one you chose during install -- in my case that was C:\Radiance. Everything else in that dialog I left as default.



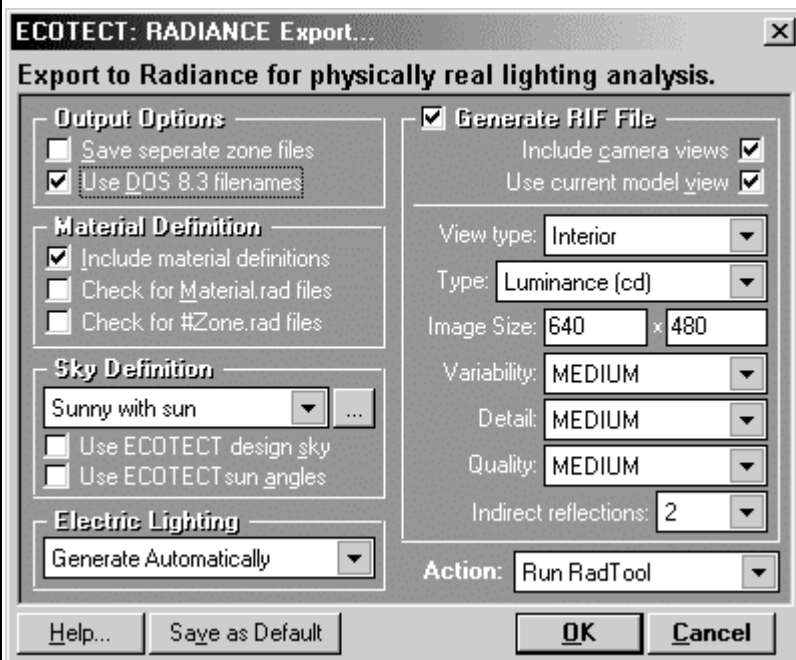
8. I then just did a really quick model in ECOTECT -- a simple box with a couple of windows, and saved a camera view from the OpenGL display window.



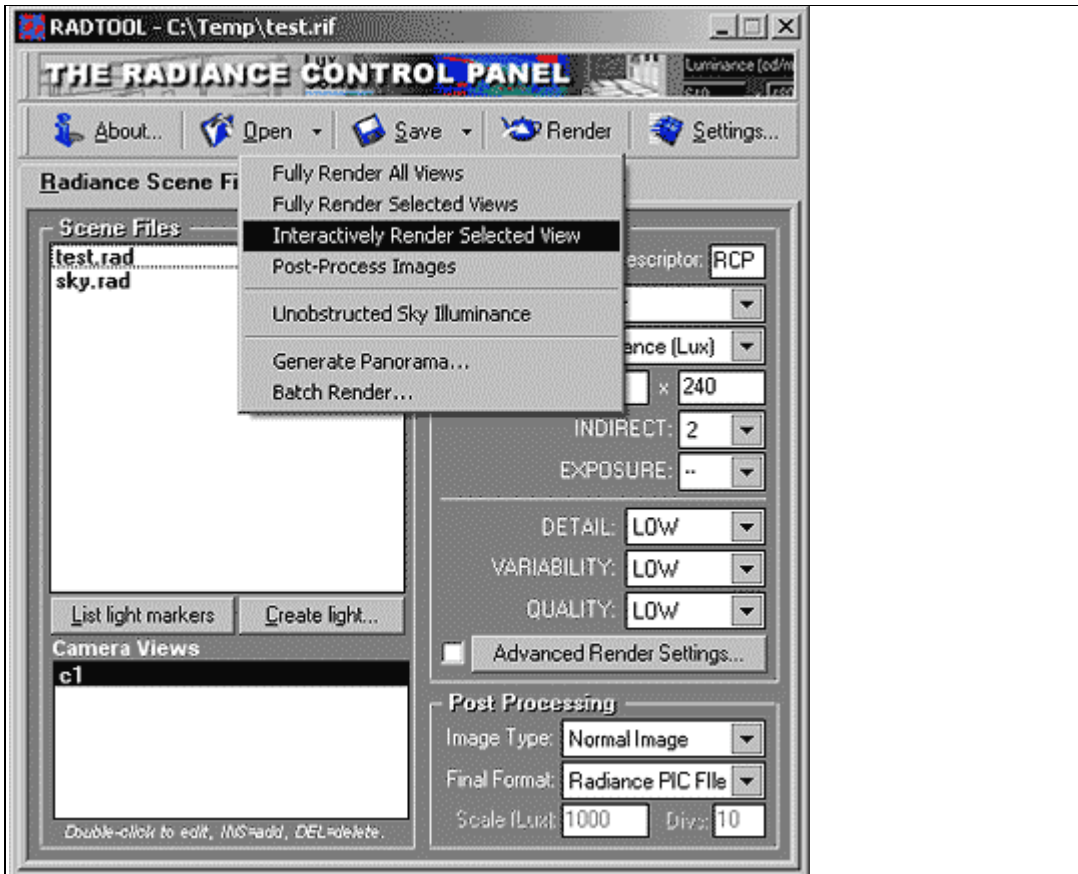
9. Then I went back to the main ECOTECT window and chose the **RADIANCE - Export Model Data** option from the **Export Manager**. This asked me where I wanted to save my RADIANCE scene files, and then loaded up the dialog box shown below.

Here too it is **VERY IMPORTANT** to choose a directory on your computer that **DOES NOT** contain **ANY** spaces in the **ENTIRE LENGTH** of the directory path -- if there is even just one space RADIANCE will not be able to handle it and will generate obscure errors that don't make much sense, so **BE CAREFUL**.

The dialog box I left with the default settings (cause to be honest, I really wouldn't have a clue what else to go with ☹).

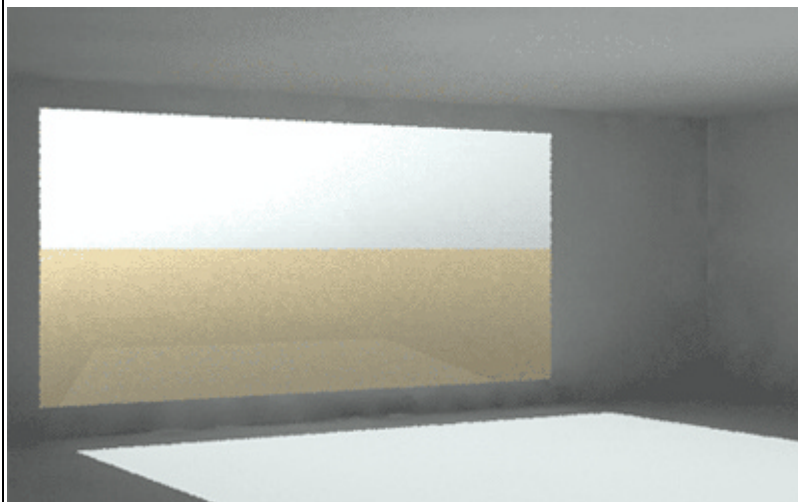


10. I also left the RadTool settings as default too, and just chose the **Interactively Render Selected View** option so I could see if it was all working.



11. and ta da!! my first ever RADIANCE render done all on my own 🤖

It's not very pretty, but I'm quite chuffed with myself 🤖...at least it worked, which is a bit of a relief to be honest as I didn't really know if it would when I started this post.



Now for all those out there reading this, I promise I am not being sarcastic, I honestly have never ever done this whole RADIANCE thing before -- I have overheard the odd bit of troubleshooting etc. that Andrew has provided for others but thats about it...

So no asking me any complex questions ok -- well at least until I've used it for a few more years 🤖

Regards,

Caroline

Caroline Raines

Square One research Pty Ltd