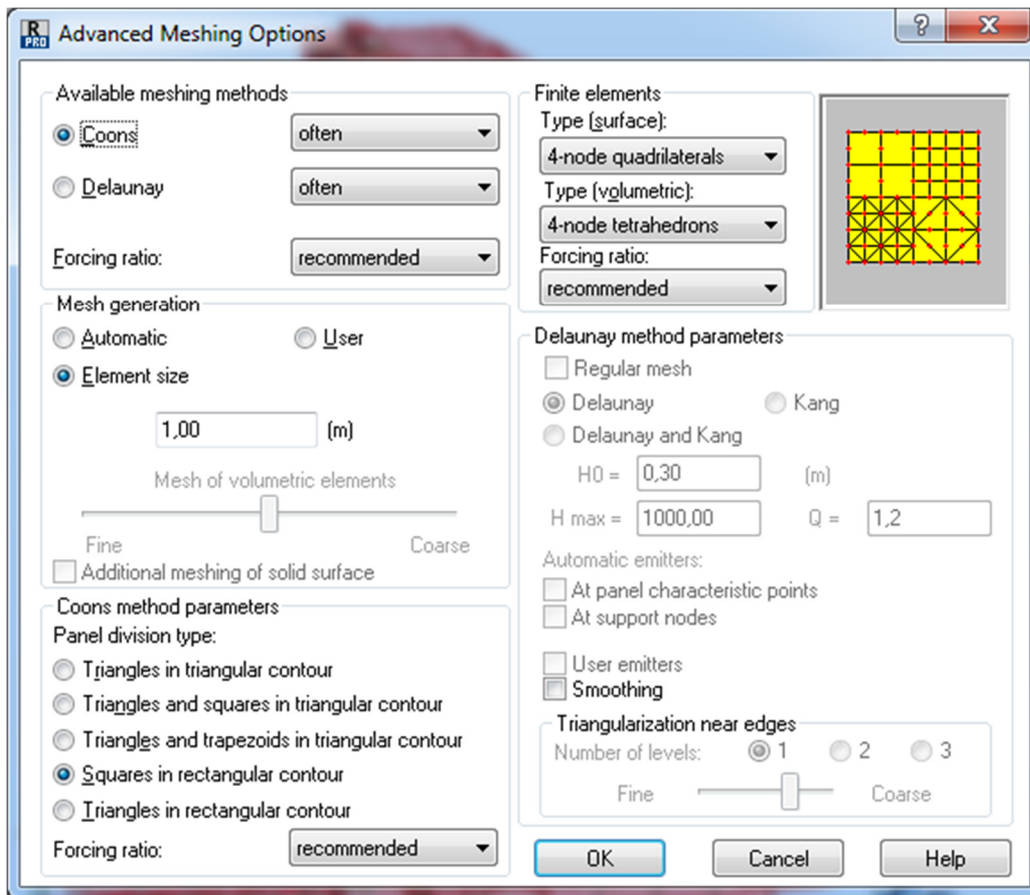
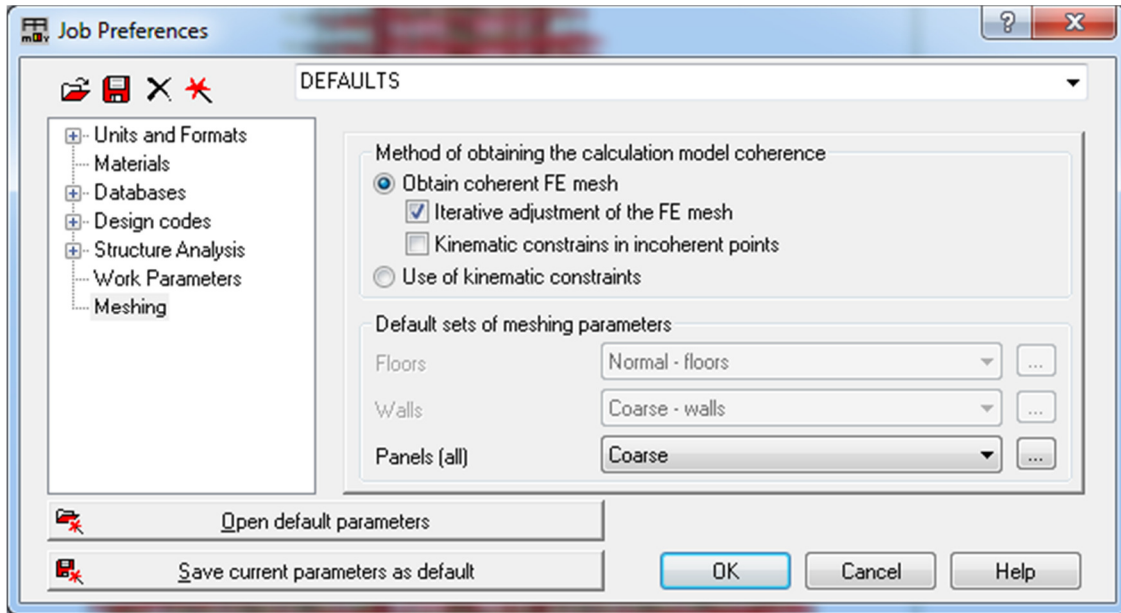


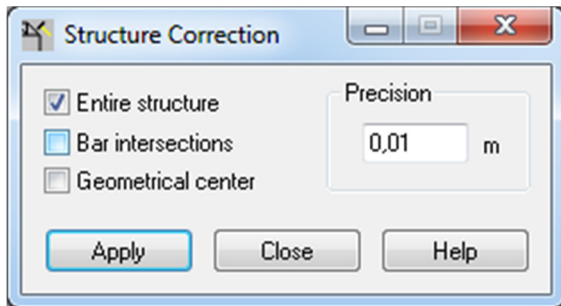
Global settings



Procedure:

Mesh whole model

Run correction



Run verification

Then <http://screencast.com/t/XtPMFITH>

Then Remove contours 2566 2567 -> <http://screencast.com/t/EmsJITgy1o>

Run correction again

Run verification

Remove "panels" 1807 2323 (checking Overlapped panels)

Try to avoid such situation (Overlapped panels ->) 2598 2599 2604 but you can leave them as they are

Remove isolated nodes