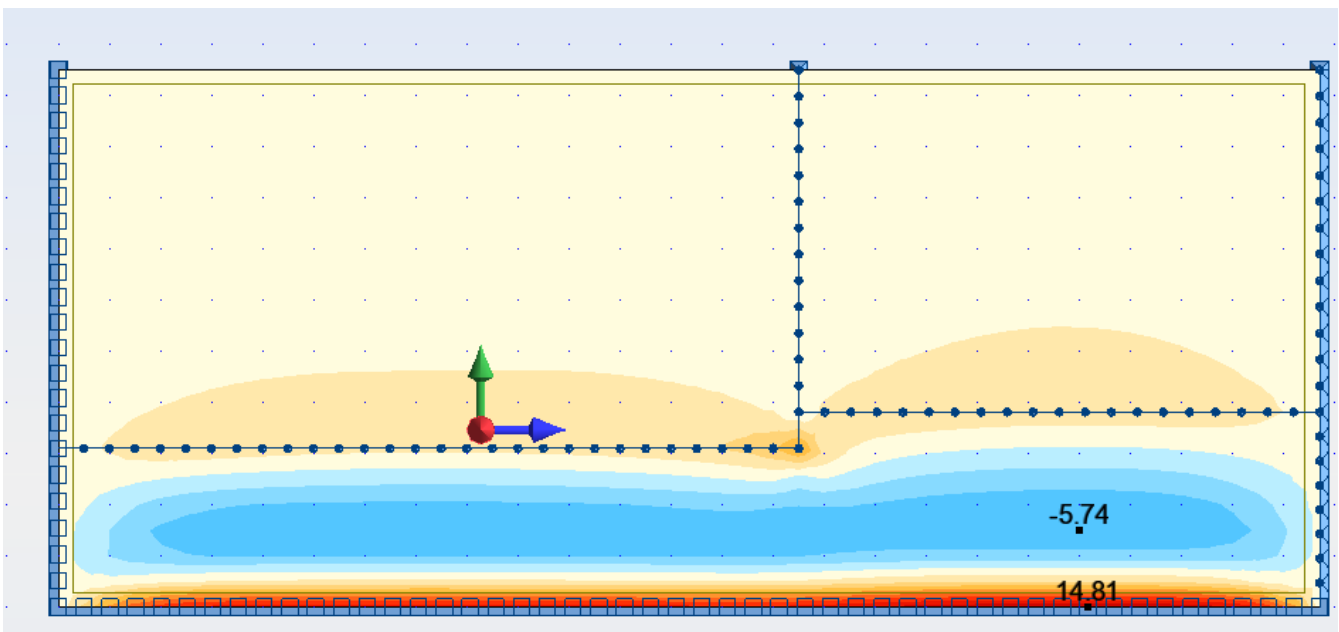
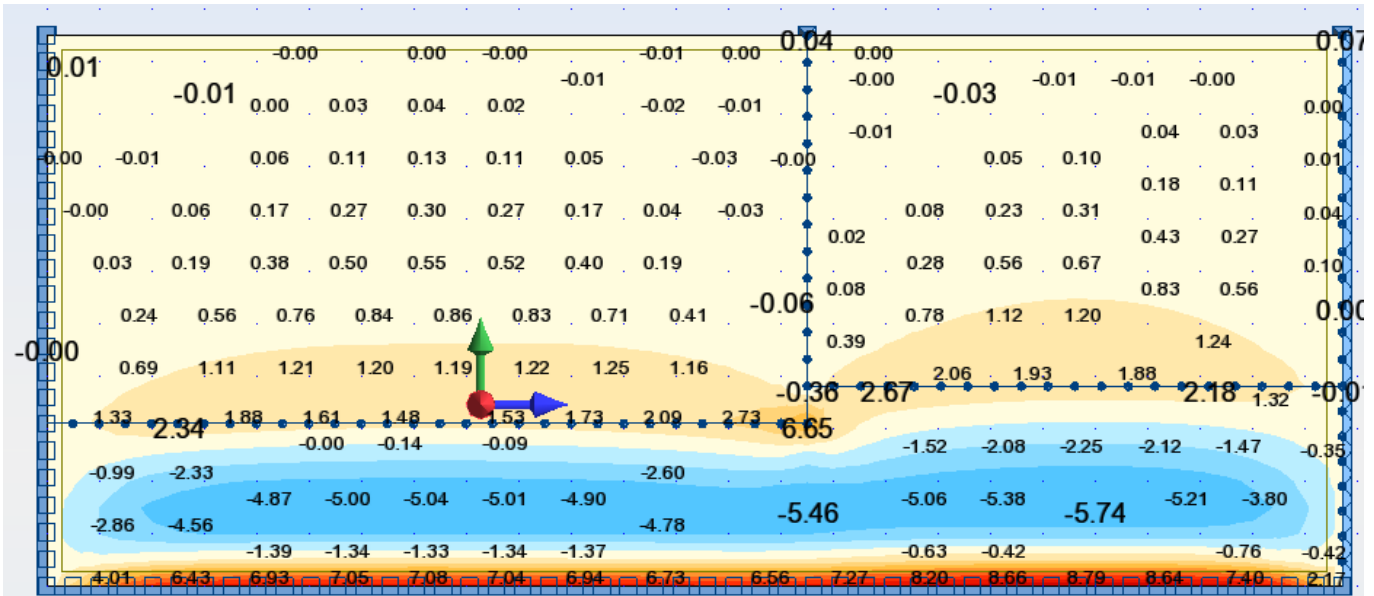
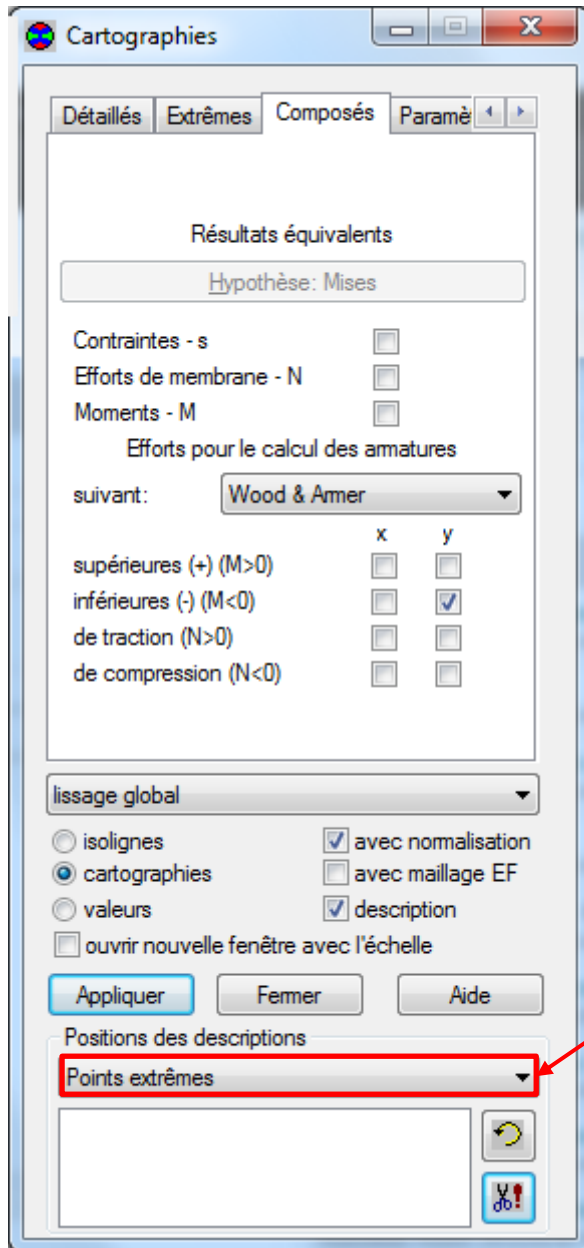


1- Get extreme points on finite elements maps :



The extreme value doesn't appear on the first screenshot. When we ask for extreme values we saw a value of 14.81 appear.

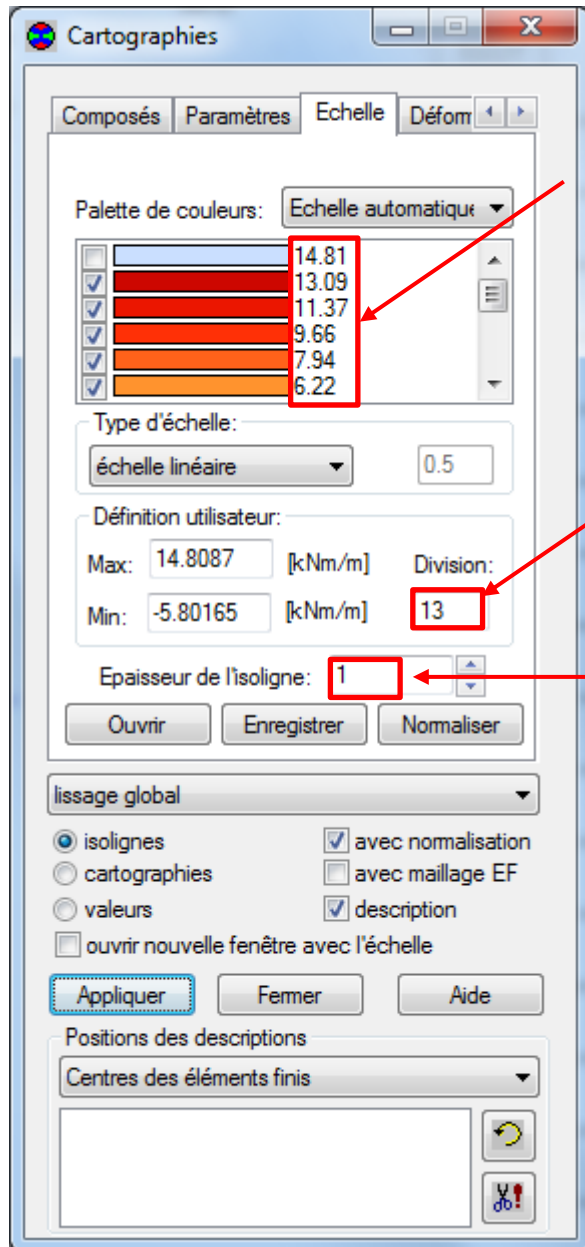
So the question is :



Is it possible to get this through
VBA ?

3- Isolines

While isolines option activated, is it possible to control these values?



Is it possible to edit these values?

Is it possible to control the number of values in the scale?

Is it possible to choose isolines thicknesses?