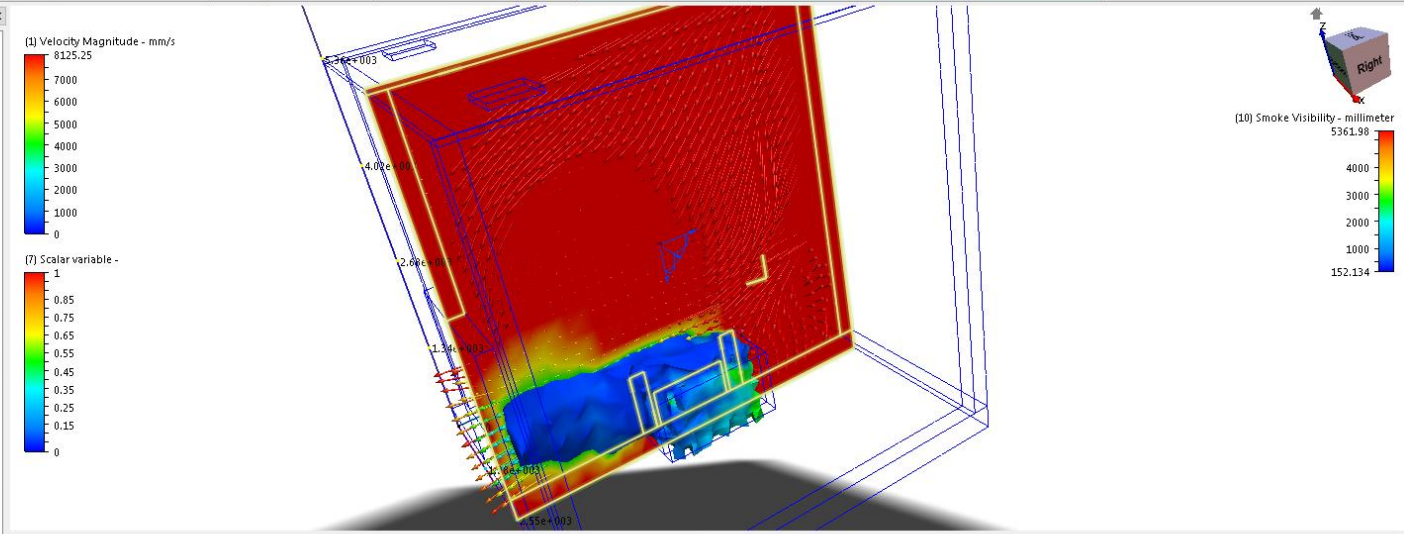


Autodesk Simulation CFD 2013 Final_house_with_no_hole_2::Design1::Scenario 1

Summary Image Animation Image Global Planes Iso Surfaces Wall Calculator Parts Points Decision Center Status File Summary File Setup File 200[Time = 500] (Last) Add Edit Remove Remove All Result: Smoke Visibility Vector: (1) Velocity Vector Traces Bulk XY Plot Make Summary

Design Study Bar

- Note
- Design 1
 - Geometry (mm)
 - Scenario 1
 - Material
 - Boundary Conditions
 - Initial Conditions
 - Mesh Size (auto)
 - Motion
 - Groups
 - Solve
 - Results
 - Materials
 - Air
 - 12 CFDCreatedVol...
 - Aluminum
 - 1 Walls:Basic:Gene...
 - 2 Walls:Basic:Gene...
 - 3 Walls:Basic:Gene...
 - 4 Walls:Basic:Gene...
 - Brick
 - 6 Floor
 - 7 CeilingAndFloor
 - 8 Walls:Basic:Gene...
 - 9 Walls:Basic:Gene...
 - 10 Walls:Basic:Gene...
 - 11 Walls:Basic:Gene...
 - Default_Resistance
 - 5 Walls:Basic:Gene...
 - Planes
 - 1-Loc.(-11650.3,-2691.23...
 - Isosurfaces
 - 1-Res.(10) Smoke Visibil...
 - Scenario 2



Output Bar

```

Mesh input complete
Processing results input ...
Results input complete
Processing BC input ...
Computing restart BC data ...
Calculating BC data structures ...
BC data structures complete and saved
Analysis Initialization Complete
Input processing complete
*** FINITE ELEMENT SUMMARY FOLLOWS ...
23268 Total Nodes, 19510 Fluid Nodes, 3758 Solid Nodes
85974 Total Elements, 64133 Fluid Elements, 21841 Solid Elements
4 Inlets 1 Outlets 0 Unknowns
***** ANALYSIS STARTED *****
Turbulent Incompressible Flow is ON
Begin Post-Processing Calculations ...
Post-Processing Calculations Done
Begin Post-Processing File Output ...
Post-Processing File Output Done
Analysis completed successfully
  
```

Message Window / Convergence Plot / Critical Values / Design Review Center