

Setup Initialization

AUTODESK® INFRASTRUCTURE DESIGN SUITE PREMIUM 2014

Installation instructions: English

Error [X]

Failed to load RevitSetupRes.dll (126)!

OK

licensemgr1 - Remote Desktop Connection

E on 1095XR1

Autodesk® Infrastructure Design Suite Premium 2014

AUTODESK® INFRASTRUCTURE DESIGN SUITE PREMIUM 2014

AUTODESK.


Create Deployment > Configure AutoCAD Civil 3D 2014

Administrative Image

Deployment configuration name:
AutoCAD Civil 3D 2014

Administrative image path:
D:\Install\AutoCAD Civil 3D 2014 Browse...

Error

 This installation package cannot be installed by the Windows Installer service. You must install a Windows service pack that contains a newer version of the Windows Installer service.
#4763

OK

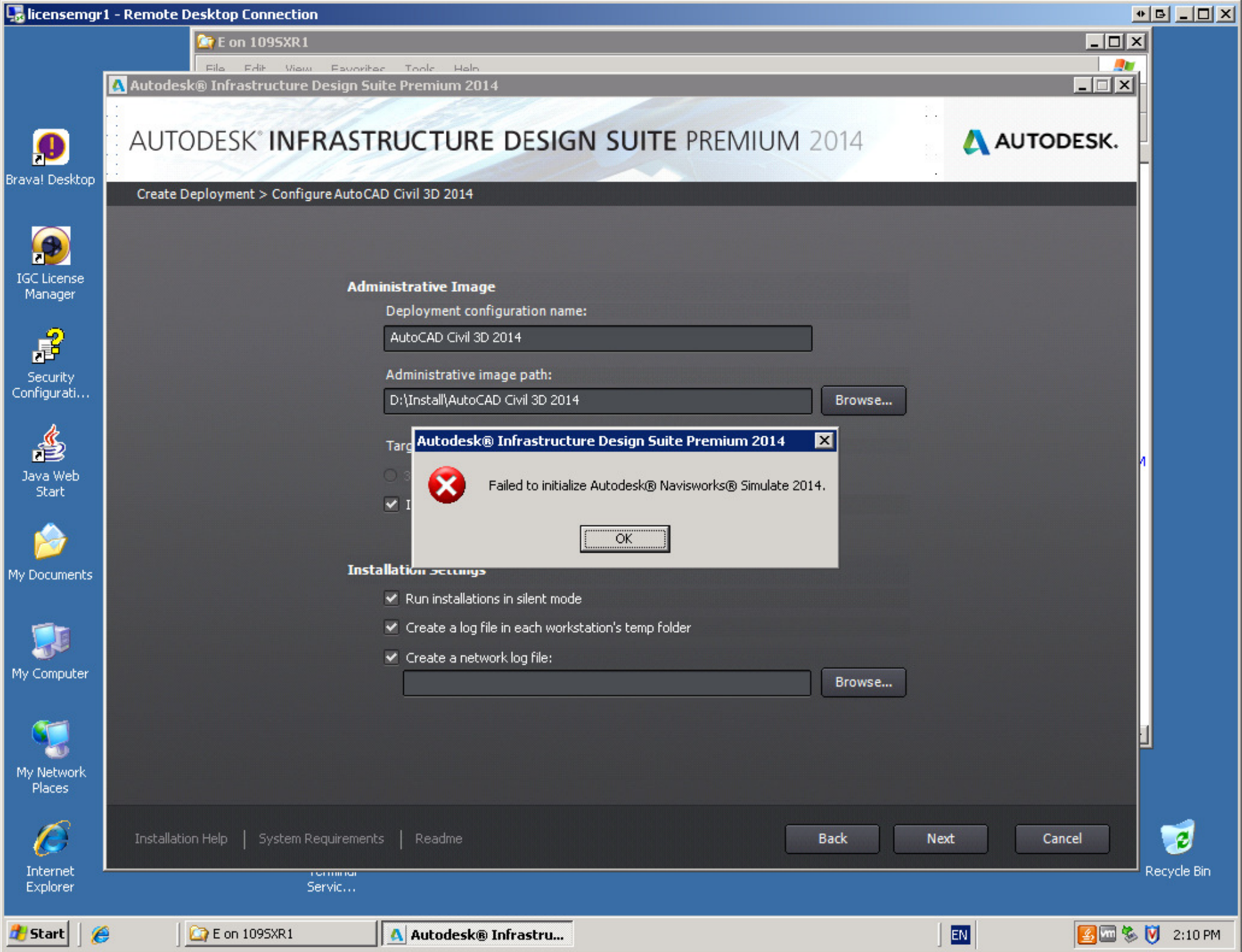
Run installations in silent mode
 Create a log file in each workstation's temp folder
 Create a network log file:
Browse...

Installation Help | System Requirements | Readme Back Next Cancel

Brava! Desktop
IGC License Manager
Security Configurati...
Java Web Start
My Documents
My Computer
My Network Places
Internet Explorer

Recycle Bin

Start | E on 1095XR1 | Autodesk® Infrastructur... | Error | EN | 2:10 PM



AUTODESK® INFRASTRUCTURE DESIGN SUITE PREMIUM 2014



Create Deployment > Configure AutoCAD Civil 3D 2014

Administrative Image

Deployment configuration name:

AutoCAD Civil 3D 2014

Administrative image path:

D:\Install\AutoCAD Civil 3D 2014

Browse...

Autodesk® Infrastructure Design Suite Premium 2014



Failed to initialize Autodesk® Navisworks® Simulate 2014.

OK

Installation Settings

- Run installations in silent mode
- Create a log file in each workstation's temp folder
- Create a network log file:

Browse...

Installation Help | System Requirements | Readme

Back

Next

Cancel



E on 1095XR1

Autodesk® Infrastru...

EN



2:10 PM

licensemgr1 - Remote Desktop Connection

E on 1095XR1

Autodesk® Infrastructure Design Suite Premium 2014

AUTODESK® INFRASTRUCTURE DESIGN SUITE PREMIUM 2014

AUTODESK.


Create Deployment > Configure AutoCAD Civil 3D 2014

Administrative Image

Deployment configuration name:
AutoCAD Civil 3D 2014

Administrative image path:
D:\Install\AutoCAD Civil 3D 2014\ Browse...

Error

 This installation package cannot be installed by the Windows Installer service. You must install a Windows service pack that contains a newer version of the Windows Installer service. #14711

OK

Run installations in silent mode

Create a log file in each workstation's temp folder

Create a network log file:
D:\Install\AutoCAD Civil 3D 2014\Log\ Browse...

Installation Help | System Requirements | Readme

Back Next Cancel

Brava! Desktop

IGC License Manager

Security Configurati...

Java Web Start

My Documents

My Computer

My Network Places

Internet Explorer

Recycle Bin

Start | E on 1095XR1 | Autodesk® Infrastructur... | Error | EN | 2:11 PM

licensemgr1 - Remote Desktop Connection

E on 1095XR1

Autodesk® Infrastructure Design Suite Premium 2014

AUTODESK® INFRASTRUCTURE DESIGN SUITE PREMIUM 2014

AUTODESK.


Create Deployment > Configure AutoCAD Civil 3D 2014

Administrative Image

Deployment configuration name:
AutoCAD Civil 3D 2014

Administrative image path:
D:\Install\AutoCAD Civil 3D 2014\ Browse...

Autodesk® Infrastructure Design Suite Premium 2014

 Failed to initialize Autodesk® Navisworks® 32 bit Exporter Plug-ins.

OK

Installation Settings

- Run installations in silent mode
- Create a log file in each workstation's temp folder
- Create a network log file:
D:\Install\AutoCAD Civil 3D 2014\Log\ Browse...

Installation Help | System Requirements | Readme

Back Next Cancel

Brava! Desktop

IGC License Manager

Security Configurati...

Java Web Start

My Documents

My Computer

My Network Places

Internet Explorer

Recycle Bin

Start | E on 1095XR1 | Autodesk® Infrastru... | EN | 2:12 PM