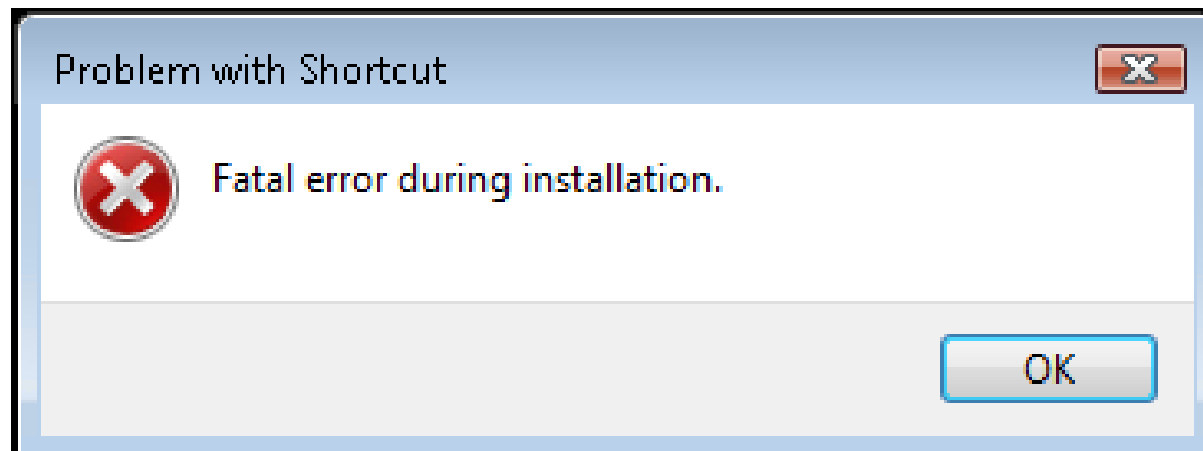
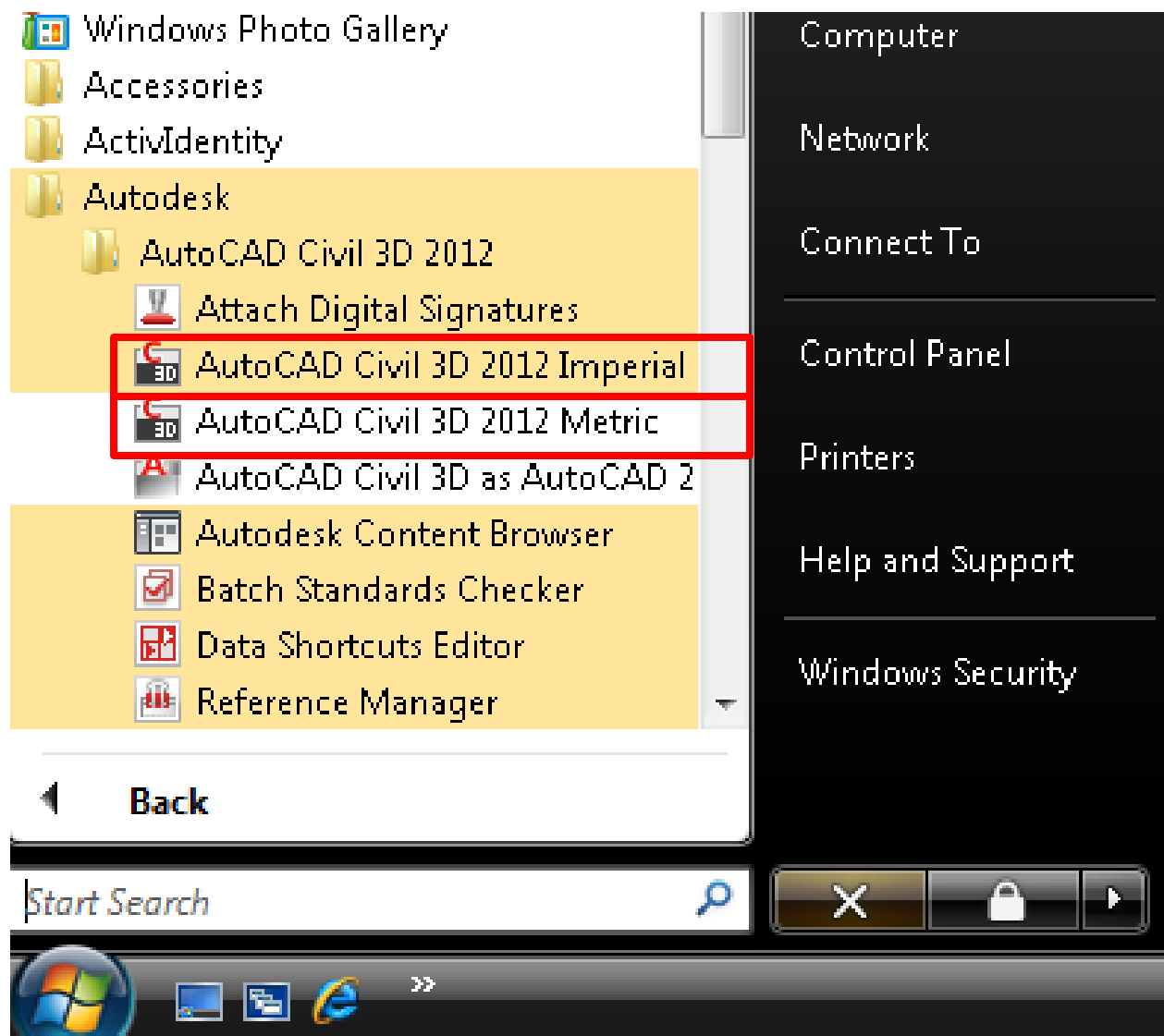


Getting Fatal Error while trying to launch “AutoCAD Civil 3D as AutoCAD 2012” first time
(Error shown in next slide)



Fatal Error



“AutoCAD Civil 3D 2012 Imperial” & “AutoCAD Civil 3D 2012 Metric” getting launched without Any issues.



After couple of “AutoCAD Civil 3D 2012 Imperial” & “AutoCAD Civil 3D 2012 Metric” launches, “AutoCAD Civil 3D as AutoCAD 2012” launches without any issues.