

AutoCAD 2012

Installation FAQ

Autodesk®

©2011 Autodesk, Inc. All Rights Reserved. Except as otherwise permitted by Autodesk, Inc., this publication, or parts thereof, may not be reproduced in any form, by any method, for any purpose.

Certain materials included in this publication are reprinted with the permission of the copyright holder.

Trademarks

The following are registered trademarks or trademarks of Autodesk, Inc., and/or its subsidiaries and/or affiliates in the USA and other countries: 3DEC (design/logo), 3December, 3December.com, 3ds Max, Algor, Alias, Alias (swirl design/logo), AliasStudio, AliasWavefront (design/logo), ATC, AUGI, AutoCAD, AutoCAD Learning Assistance, AutoCAD LT, AutoCAD Simulator, AutoCAD SQL Extension, AutoCAD SQL Interface, Autodesk, Autodesk Intent, Autodesk Inventor, Autodesk MapGuide, Autodesk Streamline, AutoLISP, AutoSnap, AutoSketch, AutoTrack, Backburner, Backdraft, Beast, Built with ObjectARX (logo), Burn, Buzzsaw, CAICE, Civil 3D, Cleaner, Cleaner Central, ClearScale, Colour Warper, Combustion, Communication Specification, Constructware, Content Explorer, Dancing Baby (image), DesignCenter, Design Doctor, Designer's Toolkit, DesignKids, DesignProf, DesignServer, DesignStudio, Design Web Format, Discreet, DWF, DWG, DWG (logo), DWG Extreme, DWG TrueConvert, DWG TrueView, DXF, Ecotect, Exposure, Extending the Design Team, Face Robot, FBX, Fempro, Fire, Flame, Flare, Flint, FMDesktop, Freewheel, GDx Driver, Green Building Studio, Heads-up Design, Heidi, HumanIK, IDEA Server, i-drop, Illuminate Labs AB (design/logo), ImageModeler, iMOUT, Incinerator, Inferno, Inventor, Inventor LT, Kynapse, Kynogon, LandXplorer, LiquidLight, LiquidLight (design/logo), Lustre, MatchMover, Maya, Mechanical Desktop, Moldflow, Moldflow Plastics Advisers, MPI, Moldflow Plastics Insight, Moldflow Plastics Xpert, Moondust, MotionBuilder, Movimento, MPA, MPA (design/logo), MPX, MPX (design/logo), Mudbox, Multi-Master Editing, Navisworks, ObjectARX, ObjectDBX, Opticore, Pipeplus, PolarSnap, PortfolioWall, Powered with Autodesk Technology, Productstream, ProMaterials, RasterDWG, RealDWG, Real-time Roto, Recognize, Render Queue, Retimer, Reveal, Revit, RiverCAD, Robot, Showcase, Show Me, ShowMotion, SketchBook, Smoke, Softimage, SoftimageXSI (design/logo), Sparks, SteeringWheels, Stitcher, Stone, StormNET, StudioTools, ToolClip, Topobase, Toxik, TrustedDWG, U-Vis, ViewCube, Visual, Visual LISP, Volo, Vtour, WaterNetworks, Wire, Wiretap, WiretapCentral, XSI.

All other brand names, product names or trademarks belong to their respective holders.

Disclaimer

THIS PUBLICATION AND THE INFORMATION CONTAINED HEREIN IS MADE AVAILABLE BY AUTODESK, INC. "AS IS." AUTODESK, INC. DISCLAIMS ALL WARRANTIES, EITHER EXPRESS OR IMPLIED, INCLUDING BUT NOT LIMITED TO ANY IMPLIED WARRANTIES OF MERCHANTABILITY OR FITNESS FOR A PARTICULAR PURPOSE REGARDING THESE MATERIALS.

Published by:

Autodesk, Inc.
111 McInnis Parkway
San Rafael, CA 94903, USA

Contents

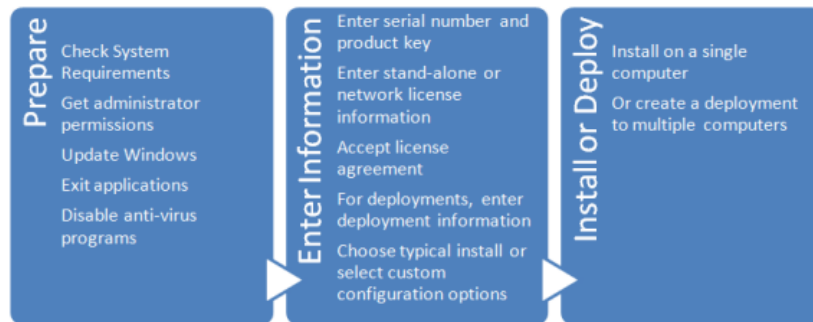
Chapter 1	Introduction	1
	Installation Overview	1
Chapter 2	Installing AutoCAD on a Single Computer	5
	How can I prepare for a successful installation?	5
	How can I choose the language in which the Installer instructions are presented?	5
	How do I choose the language for my software?	6
	Where can I find my serial number and product key?	6
	What if I've lost my serial number or product key?	6
	How do I know if I have enough disk space for the installation?	7
	How do I select a license type? What is the difference between a stand-alone license and a network license?	7
	What is the purpose of a client log file?	8
	How do I register and activate my software after I have finished the installation?	8
	What are the additional products available for installation?	8
	Where do I customize my installation?	9
	How can I install medium resolution Material Library images?	9
	How can I be sure available service packs are included in my installation?	9
	What features can I customize?	10

Chapter 3	Creating a Deployment of AutoCAD	13
	How can I prepare to create a successful deployment to multiple computers?	13
	How do I select a license type? What is the difference between a stand-alone license and a network license?	14
	How can I choose the language in which the Installer instructions are presented?	14
	What is the benefit of a network licensed version of the software?	15
	What is the purpose of a client log file?	15
	What is the purpose of a network log file?	15
	What is an administrative image?	16
	Where should the administrative image of my deployment be located?	16
	How will individual users find the deployed administrative image?	16
	What is 'silent' deployment mode?	16
	What are the additional products available for installation?	17
	Where do I customize my installation?	17
	What features can I customize?	17
	How can I install medium resolution Material Library images?	19
	How do I include Service Packs with my deployment?	19
	What are support content folders?	20
	What is the purpose of configuring additional files in a deployment?	20
	What are the services of the Communication Center?	21
	What is Autodesk Exchange?	21
	How do I modify a deployment configuration?	21
Chapter 4	Maintaining and Reconfiguring Your Installation	23
	How do I add or remove features after installation?	23
	What if I accidentally delete or alter required files? Can I replace or repair them?	24
	After repairing my installation, is it possible to recover my settings?	24
	How do I uninstall my software?	24
	What are the tools and utilities available for installation?	25
Chapter 5	AutoCAD 2012 System Requirements	27
	AutoCAD 2012 System Requirements	27
	AutoCAD 2012 System Requirements for 32-bit Workstations	27
	AutoCAD 2012 System Requirements for 64-bit workstations	29
	Requirements for GPO (Group Policy Objects) Deployments	31

Introduction



Installation Overview



The process of installing or deploying AutoCAD 2012 consists of the three main steps shown in the diagram above.

- **Preparation** is very important for achieving a trouble-free and successful installation.
- **Entering Information** varies depending upon the kind of installation or deployment you need.
- **Installation or Deployment** executes quickly once you have made and specified your choices.

You will either perform an installation on a single computer or create a deployment for multiple computers. In both cases, you decide whether to accept the typical default options or select your own options to configure a custom installation. Although the AutoCAD Installer has been designed to be self-explanatory, you can find answers to your installation questions in the FAQ

provided here. Note that complete details for creating deployments are provided in the *Network Administrator's Guide*.

What kind of installation will you perform?

Here are the four main installation types with a summary of the data and decisions they require:

- **Typical installation with default options.** For a *typical* installation, begin with a proper [preparation](#) (page 5). Then, just click through the installer, providing your [serial number](#) (page 6), [product key](#) (page 6), and [license information](#) (page 7). Pre-selected components will be installed with AutoCAD.
- **Custom installation with selected options.** For a *custom* installation, in addition to the items listed above for a typical installation, you will also need to determine:
 - Which of the additional bundled products (such as Autodesk Design Review) to install with AutoCAD.
 - Which [features](#) (page 10) (such as Express Tools) to install with AutoCAD.
 - Select standard content libraries to install.
 - Whether to accept the default to create a desktop shortcut.
 - Whether to install any available [service packs](#) (page 9), either from Autodesk or from a local or network drive.
- **Typical deployment with default options.** To create a typical deployment using default options, in addition to providing your serial number, product key, and license information, you will:
 - Name your deployment.
 - Specify a location for your [administrative image](#) (page 16).
 - Specify whether you want a [network log file](#) (page 15).
 - Determine whether to run installations to workstations in [silent mode](#) (page 16).
 - Determine whether you want to create a [client log file](#) (page 8) in the Temp directory of each workstation.
- **Custom deployment with selected options.** For a custom deployment, in addition to the items listed above for a typical deployment, you will also specify:
 - Which of the additional bundled products (such as Autodesk Design Review) to install with AutoCAD.

- Which [features](#) (page 10) (such as Express Tools) to install with AutoCAD.
- Whether to install any available [service packs](#) (page 19) and whether to merge them with the deployment or append them.
- Whether to add [additional files](#) (page 20) to the deployment.
- A folder or folders where [support content](#) (page 20) will be installed.
- What modifications to make to the default search paths and the location of some program files.
- User preferences.
- Whether to enable access to [communication channels](#) (page 21), live updates, and RSS feeds.
- Whether to enable access to online resources.

Installing AutoCAD on a Single Computer

2

How can I prepare for a successful installation?

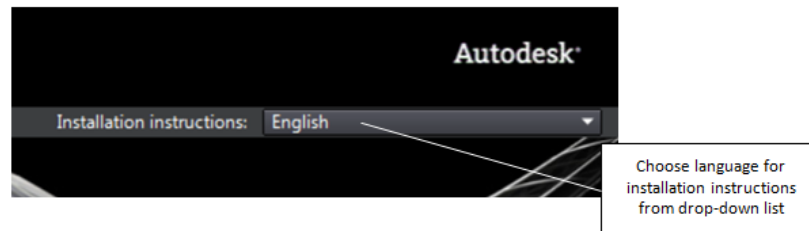
You can avoid problems and ensure a smooth installation of AutoCAD by employing the following best practices:

- Confirm that your computer meets the minimum System Requirements. (Click "System Requirements" at the bottom of the Installer window.) Important: Microsoft .NET Framework 4.0 (available on product disc) must be installed before you install AutoCAD.
- Be sure you have Administrator permissions in Windows®.
- Remove previous installations of *this release* of AutoCAD, including any Beta versions.
- Install all Microsoft Windows® system updates and restart your computer.
- Before you install, exit all active applications. An even better approach is to install AutoCAD first thing after starting your computer, before using any applications.
- Turn off your anti-virus program.

How can I choose the language in which the Installer instructions are presented?

If other languages are available, you can choose the language in which Installer instructions are presented from the *Installation instructions* drop-down list on the Installer Launch page. Note that this will also set the language for your

software, although later you can change that by selecting another language from the Product Language drop-down list on the *Install > Configure & Begin Installation* page of the Installer.



How do I choose the language for my software?

If other languages are available, you can choose the one you want to use within AutoCAD. Select a language from the Product Language drop-down list on the *Install > Configure & Begin Installation* page of the Installer.

Where can I find my serial number and product key?

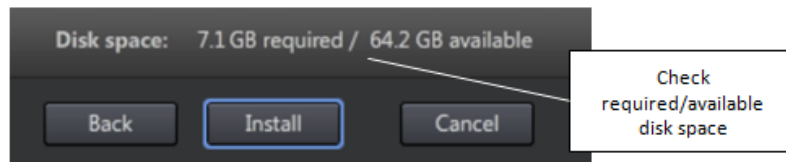
Your serial number and product key are on the outside of the product packaging, or in the Autodesk Upgrade Licensing Information email. The serial number must contain a three-digit prefix followed by an eight-digit number. The product key consists of five characters.

What if I've lost my serial number or product key?

Contact the Autodesk Business Center (ABC) at 800-538-6401 for assistance if you lose your serial number or product key.

How do I know if I have enough disk space for the installation?

The *Install > Configure & Begin Installation* page of the Installer shows you how much disk space is required for your installation and how much disk space you have available.



How do I select a license type? What is the difference between a stand-alone license and a network license?

Choose the type of installation to deploy based on the type of software license you purchased: *stand-alone* license or *network* license.

A product with a *stand-alone* license is registered and activated for an individual computer. While your software can be installed on multiple computers in your facility, a stand-alone license allows only one AutoCAD to be operational. If you need to run AutoCAD on more computers, you need to either purchase more stand-alone licenses or convert to using network licenses.

With *network* licenses, AutoCAD can be installed and run on multiple computers, up to the maximum number of licenses you've purchased. The Network License Manager utility "checks out" licenses until they are all in use. No additional computers can run the program until a license is "checked in."

For more information, see the Network Administrator's Guide.

What is the purpose of a client log file?

A client log file contains detailed installation information for each workstation. This information may be useful in diagnosing any installation problems.

The client log file is located in your Windows "Temp" folder.

How do I register and activate my software after I have finished the installation?

After you've installed your software, the easiest way to register and activate your software is with the Product License Activation wizard. You can navigate to the wizard from the Start menu. Alternatively, you can send an email message, fax, or postal mail with registration information to Autodesk.

What are the additional products available for installation?

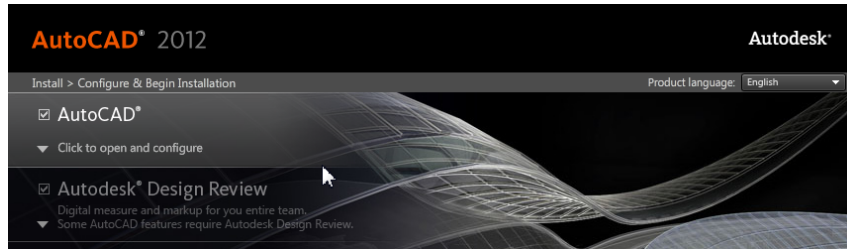
The following additional products are available to install:

- *Autodesk Design Review* — Allows users to review, measure, redline, and annotate DWG, DWF, and DXF files without the original Autodesk creation software.
- *Autodesk Inventor Fusion*— Digital prototyping technology that unites the control of parametric, history-based modeling with the speed of direct, history-free modeling, enabling users to choose the modeling approach that is right for the task at hand.

Note: To effectively install Inventor Fusion, you must install both the Inventor Fusion product and the Inventor Fusion plug-in listed in the configuration area. Click on the Autodesk Inventor Fusion band to reveal the configuration area.

Where do I customize my installation?

Click on the AutoCAD band of the *Install > Configure & Begin Installation* page of the Installer to reveal the configuration area. Optional features are listed there, many of them pre-selected for installation.



How can I install medium resolution Material Library images?

In addition to the Material Library images installed by default with AutoCAD, you may also install the *Medium Image Material Library* if you plan to perform large renders or create close-ups of objects which require high quality textures. Installation takes place after you've installed AutoCAD. When you invoke either the RENDER or RENDERCROP command from within AutoCAD, a task dialog will appear to provide an opportunity for downloading the *Medium Image Material Library*.

How can I be sure available service packs are included in my installation?

You can include a service pack for your installation in the *Service Pack* section of the Installer configuration page. Three options are available:

- Download the available service packs from Autodesk.
- Install a service pack from your local network drive.
- Do not install a service pack.

If you select the option to download and apply a service pack from Autodesk, it will be downloaded automatically. If your installation is up-to-date, a message will tell you that a service pack is not available.

What features can I customize?

Most features are pre-selected for installation with AutoCAD. However, you can de-select any feature you choose not to install or select one of the few features that have not been pre-selected. To do so, you must first reveal the feature tree, which is hidden when you choose a *Typical* install in the configuration area. To reveal the feature tree, choose the *Custom* install option.

Here are the features available when you install AutoCAD:

- **Model Documentation:** Interface for Autodesk Inventor Server, a programming component that allows you to open and query the geometry and feature information of an Autodesk Inventor part file or other imported models and to create the corresponding data within AutoCAD.
- **CAD Standards:** Tools for managing design files for compliance with your standards.
- **Database:** Database access tools.
- **Dictionaries:** Multi-language dictionaries.
- **Drawing Encryption:** Security tool for protecting drawing files with a password.
- **Express Tools:** Productivity tools to extend AutoCAD functions for dimensioning, drawing, object selection, and object modification. These tools are not supported by Autodesk.
- **Fonts:** AutoCAD fonts and TrueType® fonts.
- **Autodesk Content Explorer:** Interface for quick browsing of DWG files on local and network drives and on Autodesk Seek. Note: In order to search network folders, the Autodesk Content Service utility must also be installed from the Tools & Utilities component of the Installer.
- **Autodesk Seek:** Web service for finding, previewing, and downloading branded and generic building information modeling (BIM) files, models, drawings, and product specifications directly into an active AutoCAD session. AutoCAD users can also upload their drawings to Seek.
- **License Transfer Utility:** Tool to allow users to transfer an Autodesk product license between computers.

- **Migrate Custom Settings:** Utility to migrate custom user settings and files from a previous version of AutoCAD. When this utility is installed, it will present a dialog box for migration on the first launch of AutoCAD. You will also be able to run the utility later from Windows Start > All Programs > Autodesk > AutoCAD 2012 > Migrate Custom Settings.
- **Reset Settings:** Utility to reset AutoCAD to its original settings. This function may be useful for users who have used the "Migrate Custom Settings" utility and been dissatisfied with the results. If installed, the Reset Settings program will be available from Windows Start > All Programs > Autodesk > AutoCAD 2012 > Reset Settings.
- **Reset Settings:** Utility to reset AutoCAD to its original settings.
- **Reference Manager:** Utility that allows users to view and edit the paths of externally referenced files associated with a drawing.
- **Samples:** AutoCAD samples, DesignCenter samples, and Visual Lisp® samples.
- **Tutorials:** Visual Lisp® Tutorials

Creating a Deployment of AutoCAD

3

How can I prepare to create a successful deployment to multiple computers?

You can avoid problems and ensure a smooth deployment of AutoCAD by employing the following best practices.

- Confirm that your network, servers, and client workstations meet the minimum System Requirements for AutoCAD. (Click "System Requirements" at the bottom of the Installer.) Be sure that you have installed the .NET 4.0 Framework.
- Understand the type of license you have purchased. For a network license deployment, you should also be familiar with the type of license server model you want to use, as well as the license server name(s).
- Obtain Administrator permissions to create and install deployments.
- Install the latest Windows® updates on all computers to which AutoCAD will be deployed and restart them.
- Create a shared folder where deployments will reside. Create a subfolder for each deployment you plan to create. Verify that all users have full read/write access to the network share where your deployments will be located. Note: If you create AutoCAD deployments in multiple languages, each language requires a new deployment in a separate deployment folder.
- Identify locations for your support content files and any additional files you need.
- Copy the entire installation from the product media to a local drive and create the deployment from that location.

- Before you create the deployment, exit all applications and turn off anti-virus programs.

How do I select a license type? What is the difference between a stand-alone license and a network license?

Choose the type of installation to deploy based on the type of software license you purchased: *stand-alone* license or *network* license.

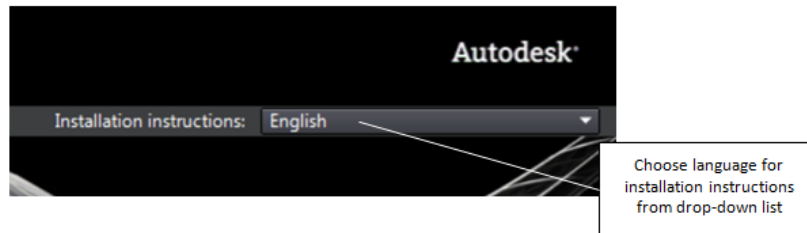
A product with a *stand-alone* license is registered and activated for an individual computer. While your software can be installed on multiple computers in your facility, a stand-alone license allows only one AutoCAD to be operational. If you need to run AutoCAD on more computers, you need to either purchase more stand-alone licenses or convert to using network licenses.

With *network* licenses, AutoCAD can be installed and run on multiple computers, up to the maximum number of licenses you've purchased. The Network License Manager utility "checks out" licenses until they are all in use. No additional computers can run the program until a license is "checked in."

For more information, see the Network Administrator's Guide.

How can I choose the language in which the Installer instructions are presented?

If other languages are available, you can choose the language in which Installer instructions are presented from the *Installation instructions* drop-down list on the Installer Launch page. Note that this will also set the language for your software, although later you can change that by selecting another language from the Product Language drop-down list on the *Install > Configure & Begin Installation* page of the Installer.



What is the benefit of a network licensed version of the software?

With a network license, you can use the Network License Manager to install your software on more systems than the number of licenses you have purchased. At any one time, you can *run* the software on the maximum number of systems for which you have licenses.

What is the purpose of a client log file?

A client log file contains detailed installation information for each workstation. This information may be useful in diagnosing any installation problems.

The client log file is located in your Windows "Temp" folder.

What is the purpose of a network log file?

A network log file keeps a record of all workstations that run the deployment. The log lists the user name, workstation name, and the status of the installation. You can refer to this file for status information and details about problems (such as low disk space or inadequate permissions) that users have encountered during installation.

What is an administrative image?

An *administrative image* is a collection of shared file resources created during the deployment process and placed in the shared network deployment folder from which multiple workstations install the product.

Where should the administrative image of my deployment be located?

The *administrative image* for your deployment should be stored in a shared folder (*a network share*) you have created before you launch the deployment. Name the shared folder "Deployments" and put it on the Desktop of the server where you will store deployments.

How will individual users find the deployed administrative image?

When you are finished creating the deployment, users can install their software by using the shortcut located with the administrative image. The shortcut name matches the deployment name that you specified when you created the deployment.

Notify users of the location of the administrative image, instruct them to double-click the shortcut, and provide any other necessary information.

What is 'silent' deployment mode?

A deployment running in 'silent' mode proceeds without input from individual users, who receive no requests for interaction.

When silent mode is 'off', interactive entries may be made during the deployment process.

What are the additional products available for installation?

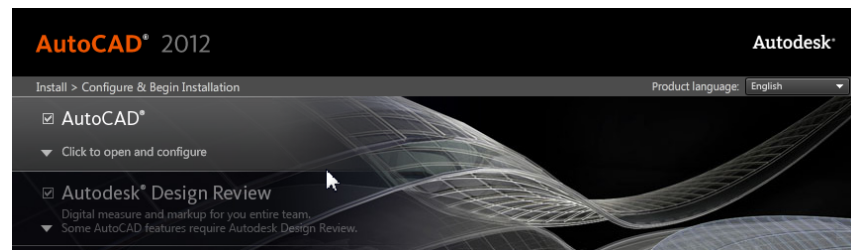
The following additional products are available to install:

- *Autodesk Design Review* — Allows users to review, measure, redline, and annotate DWG, DWF, and DXF files without the original Autodesk creation software.
- *Autodesk Inventor Fusion*— Digital prototyping technology that unites the control of parametric, history-based modeling with the speed of direct, history-free modeling, enabling users to choose the modeling approach that is right for the task at hand.

Note: To effectively install Inventor Fusion, you must install both the Inventor Fusion product and the Inventor Fusion plug-in listed in the configuration area. Click on the Autodesk Inventor Fusion band to reveal the configuration area.

Where do I customize my installation?

Click on the AutoCAD band of the *Install > Configure & Begin Installation* page of the Installer to reveal the configuration area. Optional features are listed there, many of them pre-selected for installation.



What features can I customize?

Most features are pre-selected for installation with AutoCAD. However, you can de-select any feature you choose not to install or select one of the few features that have not been pre-selected. To do so, you must first reveal the

feature tree, which is hidden when you choose a *Typical* install in the configuration area. To reveal the feature tree, choose the *Custom* install option.

Here are the features available when you install AutoCAD:

- **Model Documentation:** Interface for Autodesk Inventor Server, a programming component that allows you to open and query the geometry and feature information of an Autodesk Inventor part file or other imported models and to create the corresponding data within AutoCAD.
- **CAD Standards:** Tools for managing design files for compliance with your standards.
- **Database:** Database access tools.
- **Dictionaries:** Multi-language dictionaries.
- **Drawing Encryption:** Security tool for protecting drawing files with a password.
- **Express Tools:** Productivity tools to extend AutoCAD functions for dimensioning, drawing, object selection, and object modification. These tools are not supported by Autodesk.
- **Fonts:** AutoCAD fonts and TrueType® fonts.
- **Autodesk Content Explorer:** Interface for quick browsing of DWG files on local and network drives and on Autodesk Seek. Note: In order to search network folders, the Autodesk Content Service utility must also be installed from the Tools & Utilities component of the Installer.
- **Autodesk Seek:** Web service for finding, previewing, and downloading branded and generic building information modeling (BIM) files, models, drawings, and product specifications directly into an active AutoCAD session. AutoCAD users can also upload their drawings to Seek.
- **License Transfer Utility:** Tool to allow users to transfer an Autodesk product license between computers.
- **Migrate Custom Settings:** Utility to migrate custom user settings and files from a previous version of AutoCAD. When this utility is installed, it will present a dialog box for migration on the first launch of AutoCAD. You will also be able to run the utility later from Windows Start > All Programs > Autodesk > AutoCAD 2012 > Migrate Custom Settings.
- **Reset Settings:** Utility to reset AutoCAD to its original settings. This function may be useful for users who have used the "Migrate Custom Settings" utility and been dissatisfied with the results. If installed, the Reset Settings program will be available from Windows Start > All Programs > Autodesk > AutoCAD 2012 > Reset Settings.
- **Reset Settings:** Utility to reset AutoCAD to its original settings.

- **Reference Manager:** Utility that allows users to view and edit the paths of externally referenced files associated with a drawing.
- **Samples:** AutoCAD samples, DesignCenter samples, and Visual Lisp® samples.
- **Tutorials:** Visual Lisp® Tutorials

How can I install medium resolution Material Library images?

In addition to the Material Library images installed by default with AutoCAD, you may also install the *Medium Image Material Library* if you plan to perform large renders or create close-ups of objects which require high quality textures. Installation takes place after you've installed AutoCAD. When you invoke either the RENDER or RENDERCROP command from within AutoCAD, a task dialog will appear to provide an opportunity for downloading the *Medium Image Material Library*.

How do I include Service Packs with my deployment?

You can include a service pack for your deployment in the *Service Pack* section of the Installer configuration page. If you select the option to download and apply a service pack from Autodesk, it will be downloaded automatically. If your installation is up-to-date, a message will tell you that a service pack is not available.

If you choose to apply a service pack from your local drive or a drive in your network, you will need to choose between two options:

- Append the service pack(s) onto the deployment by applying the pack after your software is deployed. With this method, the service pack is applied to the current deployment only; the Administrative Image MSI file is not affected.
- Merge the service pack(s) into the Administrative Image MSI file. With this method, the service pack may not be removed from the image.

What are support content folders?

Under *Support Content*, you can specify where your support content will be installed.

You choose between four destination options for support content.

- **Local user profile folders:** Default.
- **Program install folder:** Content installed to your application installation folder on individual user station.
- **Single shared folder:** Allows for one unique local folder to be specified for **all** content types.
- **Custom folders:** Allows a unique path to be specified for **each** different content type.

Here are the six categories of support content for AutoCAD:.

- **Support:** Customization/menu files and palette, hatch, and line type content.
- **Plotters:** Plot styles and plot configuration files.
- **Data Links:** Data link files.
- **Template:** Drawing, sheet set, and publish to web templates.
- **Rendering:** Hardware certification and web light files.
- **Help:** User's Guide, Command Reference, Customization Guide, Installation FAQ, and Licensing Guide.

What is the purpose of configuring additional files in a deployment?

You can configure your installation to include additional files to accomplish the following tasks:

- Specify script files to include with your deployment.
- Install user files of any format and place them in any directory on a client workstation.
- Add subfolders under the installation folder.
- Add sample files to the same location as program files.
- Add files to the root of the installation directory.

What are the services of the Communication Center?

During a custom deployment, you can choose whether or not to activate user preferences for Communication Center services.

- **Enable live updates:** Allows users to check for updates when an internet connection is established. If a product patch is available, notification of its availability is received on the program's status bar; the patch can be either downloaded directly from an Autodesk server or modified before being copied to workstations.
- **Enable CAD Manager Channel:** Controls the display of CAD Manager Channels, allowing users to toggle CAD Manager Channels, define the CAD Manager feed location, and set the CAD Manager Channel display name.

What is Autodesk Exchange?

Autodesk Exchange is a new central portal for Help, learning aids, tips and tricks, videos, and downloadable apps. If you accept the User Preference default to display Autodesk Exchange at startup, you will have access to a dynamic selection of tools from the Autodesk community.

How do I modify a deployment configuration?

Once you have created a deployment, you can modify its configuration.

To modify a deployment configuration:

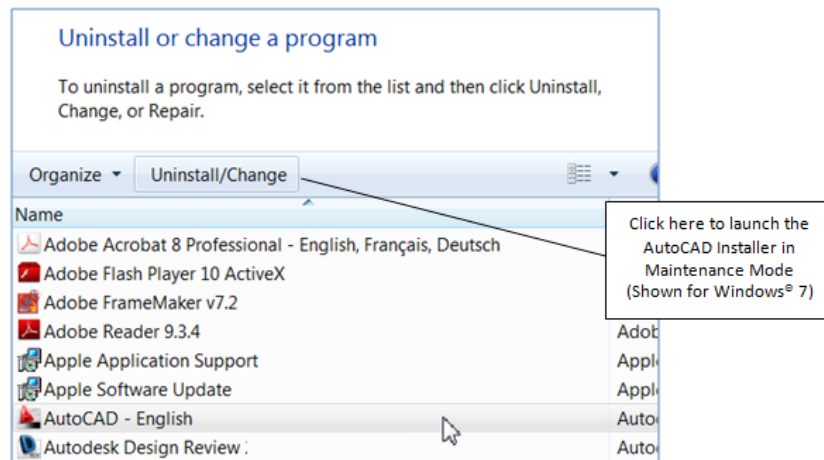
- 1 Locate and open the shared folder where your deployment is located.
- 2 Open the *Tools* subfolder within your deployment folder.
- 3 Locate the shortcut for *Create or Modify a Deployment*.
- 4 Double-click the *Create or Modify a Deployment* shortcut to launch the Installer in Modify Deployment Configuration mode.
- 5 On the *Modify Deployment Configuration > Settings* page, enter information about your deployment and select an option.

Maintaining and Reconfiguring Your Installation

4

How do I add or remove features after installation?

To add or remove features from AutoCAD, navigate from *Windows Start* to the control panel for adding, changing, and removing programs. When you select AutoCAD as the program you want to change, the Installer will open in maintenance mode. Click *Add or Remove Features* and follow the instructions in the Installer.



What if I accidentally delete or alter required files? Can I replace or repair them?

You may be able to fix a problem that stems from a missing or altered support file by running the Installer to repair or reinstall AutoCAD. To launch the Installer, navigate from *Windows Start* to the control panel for adding, changing, and removing programs. When you select AutoCAD as the program to change, the Installer will open in maintenance mode. Click *Repair or Reinstall* and follow the instructions in the Installer.

After repairing my installation, is it possible to recover my settings?

Custom settings can be exported and later re-imported to the same system in case you have to repair the installation of your program. For more detailed information regarding exporting and importing custom settings, see the *Customization Guide*.

How do I uninstall my software?

To uninstall AutoCAD and all of its components from your computer, navigate from *Windows Start* to the control panel for adding, changing, and removing programs. When you select AutoCAD as the program you want to change, the Installer will open in maintenance mode. Click *Uninstall* and follow the instructions in the Installer.

Note: AutoCAD installs a material library and base resolution image library by default. These must be uninstalled separately through the Windows control panel for adding or removing programs.

What are the tools and utilities available for installation?

You can install the following products from the Tools & Utilities section of the Installer.

- **Autodesk Network License Manager** — Manages network licenses for AutoCAD by "checking out" and "checking in" licenses.
- **Autodesk CAD Manager Tools** — Utility to allow CAD administrators to modify resource settings after a deployment is completed.
- **Autodesk Content Service** — Utility (for installation on network server) to build index and enable searching on shared network folders and in *Autodesk Seek*. Works in conjunction with *Autodesk Content Explorer* (preselected feature for installation with AutoCAD), which must also be installed.

AutoCAD 2012 System Requirements

5

AutoCAD 2012 System Requirements

Here are the minimum system requirements for both 32-bit and 64-bit operating systems.

Recommended requirements: In addition to the minimum requirements, these system requirements also include recommended requirements for memory and graphics cards. The recommended operating system is Windows 7 (64-bit).

[AutoCAD 2012 System Requirements for 32-bit Workstations](#) (page 27)

[AutoCAD 2012 System Requirements for 64-bit Workstations](#) (page 29)

[Requirements for GPO \(Group Policy Objects\) Deployments](#) (page 31)

AutoCAD 2012 System Requirements for 32-bit Workstations

Description	Requirement
Operating system	Service Pack 3 (SP3) or later of the following: <ul style="list-style-type: none"><li data-bbox="932 1486 1321 1514">■ Microsoft® Windows® XP Professional<li data-bbox="932 1528 1268 1556">■ Microsoft® Windows® XP Home Service Pack 2 (SP2) or later of the following: <ul style="list-style-type: none"><li data-bbox="932 1625 1321 1652">■ Microsoft Windows Vista® Enterprise

	<ul style="list-style-type: none"> ■ Microsoft Windows Vista Business ■ Microsoft Windows Vista Ultimate ■ Microsoft Windows Vista Home Premium <p>The following operating systems:</p> <ul style="list-style-type: none"> ■ Microsoft Windows 7 Enterprise ■ Microsoft Windows 7 Ultimate ■ Microsoft Windows 7 Professional ■ Microsoft Windows 7 Home Premium
Browser	Internet Explorer [®] 7.0 or later
Processor	<p>Windows XP Intel[®] Pentium[®] 4 or AMD Athlon[™] Dual Core, 1.6 GHz or Higher with SSE2 technology</p> <p>Windows Vista or Windows 7 Intel Pentium 4 or AMD Athlon Dual Core, 3.0 GHz or Higher with SSE2 technology</p>
Memory	2 GB RAM (4 GB Recommended)
Display resolution	1024x768 with True Color
Disk Space	Installation 2.0 GB
Pointing Device	MS-Mouse compliant
Media (DVD)	Download and Installation from DVD
.NET Framework	.NET Framework Version 4.0

Additional requirements for 3D Modeling	<p>Intel Pentium 4 processor or AMD Athlon, 3.0 GHz or greater or Intel or AMD Dual Core processor, 2.0 GHz or greater</p> <p>2 GB RAM</p> <p>2 GB free hard disk available not including installation requirements</p> <p>1280 x 1024 True color video display adapter with 128 MB (recommended: 256 MB for normal images and 512 MB for Medium Image Material Library images), Pixel Shader 3.0 or greater, Direct3D® capable workstation class graphics card.</p>
-----------------------------------------	----------------------------------------------------------------------------------------------------------------------------------------------------------------------------------------------------------------------------------------------------------------------------------------------------------------------------------------------------------------------------------------------------------------------------------------------------------------------

AutoCAD 2012 System Requirements for 64-bit workstations

Description	Requirement
Operating system	<p>Service Pack 2 (SP2) or later of the following:</p> <ul style="list-style-type: none"> ■ Microsoft® Windows® XP Professional <p>Service Pack 2 (SP2) or later of the following:</p> <ul style="list-style-type: none"> ■ Microsoft Windows Vista® Enterprise ■ Microsoft Windows Vista Business ■ Microsoft Windows Vista Ultimate ■ Microsoft Windows Vista Home Premium <p>The following operating systems:</p> <ul style="list-style-type: none"> ■ Microsoft Windows 7 Enterprise ■ Microsoft Windows 7 Ultimate ■ Microsoft Windows 7 Professional ■ Microsoft Windows 7 Home Premium

Browser	Internet Explorer [®] 7.0 or later
Processor	AMD Athlon 64 with SSE2 technology AMD Opteron™ with SSE2 technology Intel Xeon [®] with Intel EM64T support and SSE2 Intel Pentium 4 with Intel EM64T support and SSE2 technology
Memory	2 GB RAM (8GB Recommended)
Display resolution	1024x768 with True Color
Disk Space	Installation 2.0 GB
Pointing Device	MS-Mouse compliant
Media (DVD)	Download and Installation from DVD
.NET Framework	.NET Framework Version 4.0
Additional requirements for 3D Modeling	2 GB RAM or more 2 GB free hard disk available not including installation requirements 1280 x 1024 True color video display adapter 128 MB (recommended: 256 MB for normal images and 512 MB for Medium Image Material Library images), Pixel Shader 3.0 or greater, Direct3D [®] capable workstation class graphics card.

Requirements for GPO (Group Policy Objects) Deployments

In addition to the minimum system requirements, additional items are needed for a successful GPO deployment. See the Network Administrator's Guide for further information about GPO deployments.

Available on the product disc

Microsoft .NET 4.0

DirectX 9.0C

Microsoft Visual C++ 2010 Redistributable (x86) for 32 bit and 64 bit operating systems
Microsoft Visual C++ 2008 SP1 Redistributable (x86) for 32 bit and 64 bit operating systems
Microsoft Visual C++ 2005 Redistributable (x86) for 32 bit and 64 bit operating systems
Microsoft Visual C++ 2008 SP1 Redistributable (x64) for 64 bit operating systems
Microsoft Visual C++ 2005 Redistributable (x64) for 64-bit operating systems

Microsoft National Language Support Downlevel APIs (for x64 only)

FARO LS

Autodesk Design Review 2012

Autodesk Content Service (Private or Public)

Autodesk Inventor Fusion and The Autodesk Inventor Fusion Add-in for AutoCAD 2012

Autodesk Material Library 2012

Autodesk Material Base Resolution Image Library 2012

Other

Microsoft Internet Explorer version 7.0 Service Pack 1 or later. You can download Microsoft Internet Explorer from the Microsoft website by visiting www.microsoft.com.

Microsoft Installer Package (MSI) 4.5

Microsoft Windows Media Format 9.5 (prerequisite for 64-bit)