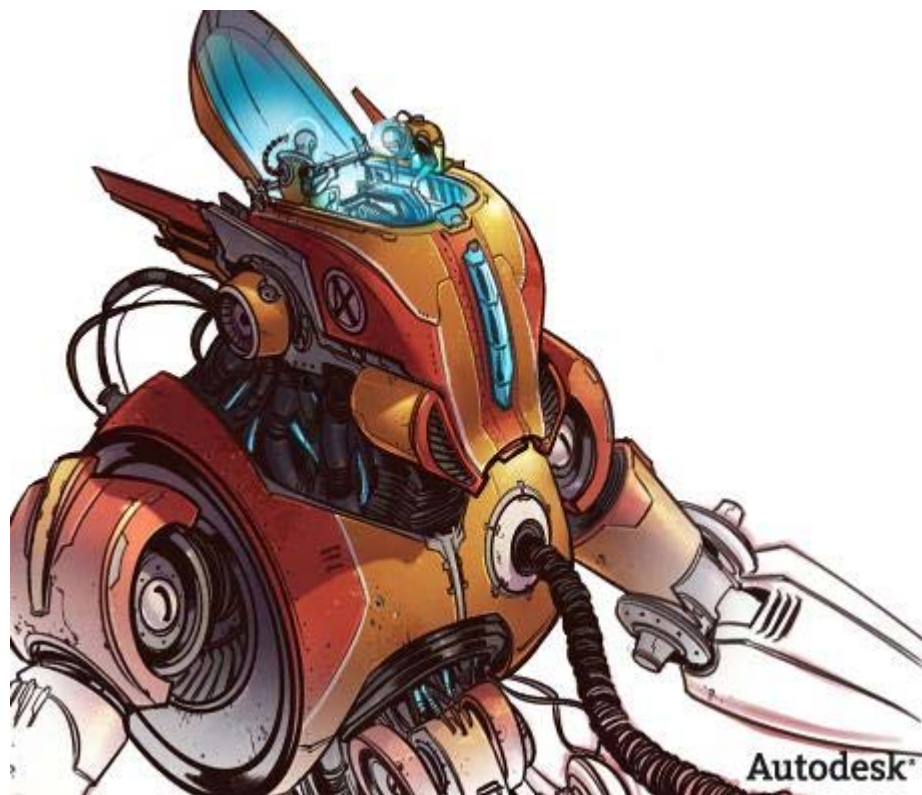


Autodesk SketchBook Pro

2010 R1



Installation and Setup



Minimum system requirements

Since Autodesk SketchBook Pro runs on Mac and Windows platforms and with Tablet PCs, there are different minimum system requirements, installation, and setup instructions supplied for each.

For this version of Autodesk SketchBook Pro, we added a 15 non-consecutive day trial version of SketchBook Pro, with a new banner image for each day it is used.

To ensure Autodesk SketchBook Pro runs to its potential, please ensure that your hardware meets the following requirements.

Windows system requirements

- 800 MHz CPU
- Microsoft Windows® XP or Windows Vista®
- 256 MB of RAM
- Graphics card capable of 1024 x768 display
- We recommend that you use a pressure-sensitive Wacom® tablet and pen for basic features.

NOTE We do not support other tablet brands, though they might work.

Macintosh system requirements

- Mac OS X, Version 10.4, 10.5 G4, G5, or Intel-based CPU*
- 256 MB of RAM
- Graphics card capable of 1024 x 768 display
- SketchBook Pro for OS X is delivered as a Universal Binary supporting both PPC and Intel-based Mac systems.

NOTE For Mac users, Autodesk SketchBook Pro is Leopard ready.

- We recommend the use of a pressure sensitive Wacom® tablet and pen for basic features.

NOTE We do not support other tablet brands, though they might work.

Tablet PC

We designed Autodesk SketchBook Pro for pressure-sensitive Tablet PC devices running Microsoft® Windows XP™ Tablet PC Edition operating system.

Before installation

If you participated in either the Alpha or Betaprogram and created custom brushes or textures, you will need to save them, then delete your preferences, before installing SketchBook Pro 2010. If you don't, these custom brushes will be deleted and your marking menus could contain unexpected combinations of tools.

For Mac users

- 1 Go to `[Macintosh HD]/Users/[user account]/Library/Application Support/Autodesk/SketchBook Pro/4.0`.
- 2 Copy your `BrushTextures` and `CustomBrushes` folders.
- 3 Save them on your desktop.

- 4 Return to [Macintosh HD]/Users/[user account]/Library/Application Support/Autodesk/SketchBook Pro/4.0 and delete userPreferences.xml and LagoonMMDefinition.xml.
- 5 Install SketchBook Pro 2010R1.
- 6 After the installation, copy the BrushTextures and CustomBrushes folders and paste them in [Macintosh HD]/Users/[user account]/Library/Application Support/Autodesk/SketchBook Pro/4.0. Your custom brushes and textures are now accessible in SketchBook Pro 2010.

For PC users

- 1 Go to C:\Documents and Settings\[user account]\Application Data\Autodesk\SketchBook Pro\4.0.

NOTE If Application Data is hidden, follow these instructions to make it visible. In the menu bar, select **Tools > Folder Options** to open the **Folder Options** window. Click the **View** tab. In **Advanced settings**, go to **Files and Folders > Hidden files and folders**. Select **Show hidden files and folders**. Click **OK**.

- 2 Copy your BrushTextures and CustomBrushes folders.
- 3 Save them on your desktop.
- 4 Return to C:\Documents and Settings\[user account]\Application Data\Autodesk\SketchBook Pro\4.0 and delete userPreferences.xml and LagoonMMDefinition.xml.
- 5 Install SketchBook Pro 2010.
- 6 After the installation, copy the BrushTextures and CustomBrushes folders and paste them in C:\Documents and Settings\[user account]\Application Data\Autodesk\SketchBook Pro\4.0. Your custom brushes and textures are now accessible in SketchBook Pro 2010.

Install Autodesk SketchBook Pro

To ensure Autodesk SketchBook Pro is installed correctly, if you installed the SketchBook Pro alpha, uninstall it. If you do not have the alpha installed,

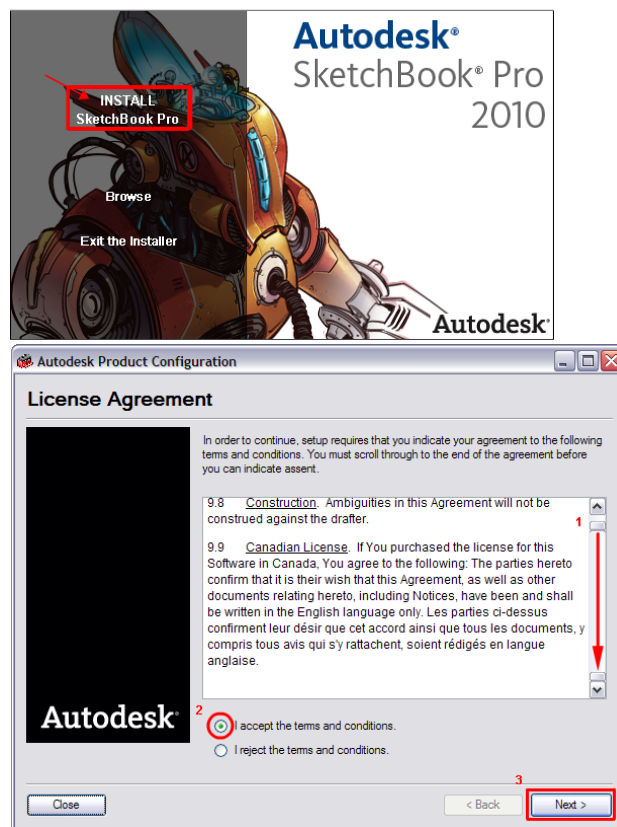
please find the appropriate section and following the installation instructions. If you are activating the software from a license, see [Activate the software from a serial number](#) on page 10.

Installing on Windows (PC and Tablet PC)

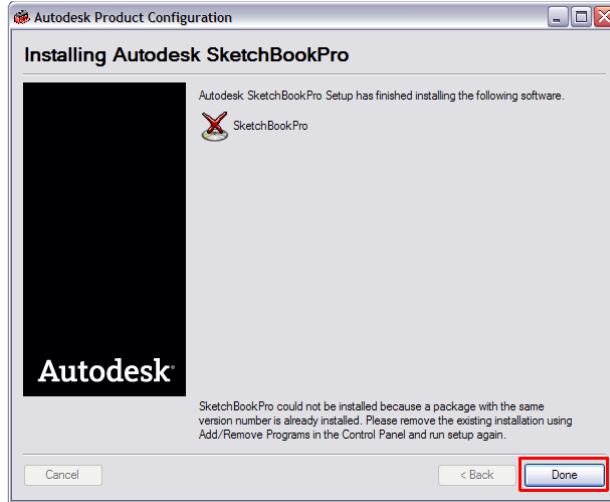
There are two methods for installing SketchBookPro. For people with the SketchBookPro DVD, inserting it into your disc drive should start the installation process. However, if this is not the case or you are downloading the software from our web site, see **Manual installation**.

DVD installation

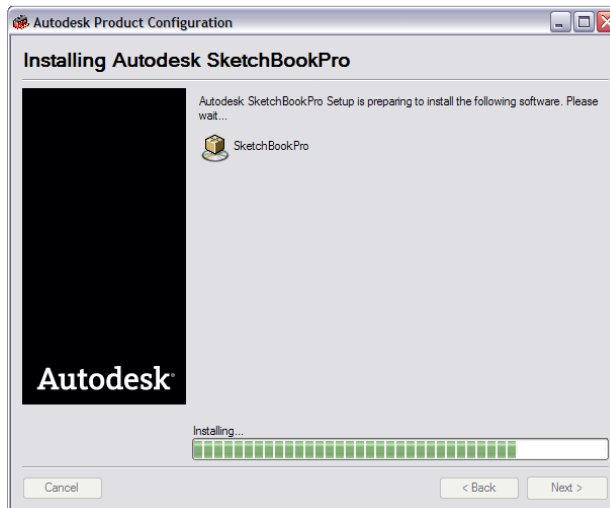
- 1 Place the SketchBookPro DVD into your disc drive. A splash screen appears.
- 2 Follow the installation instructions.

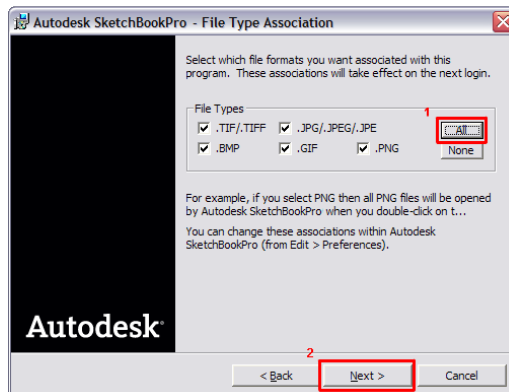
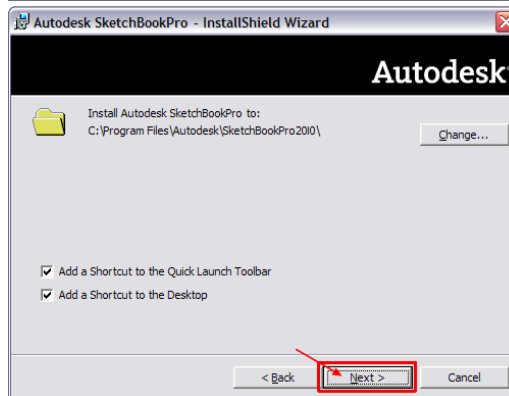
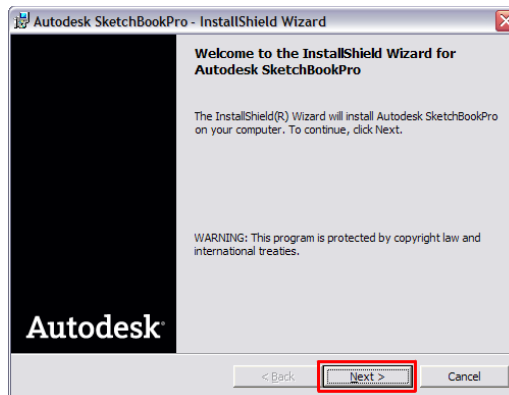


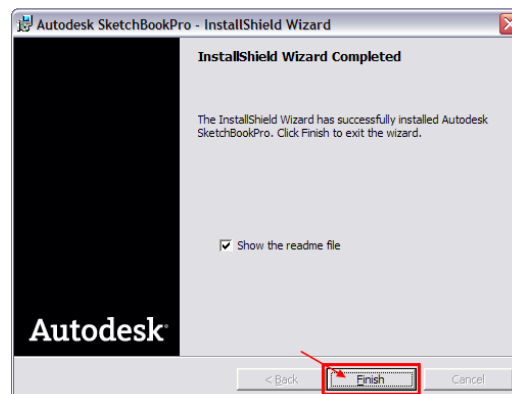
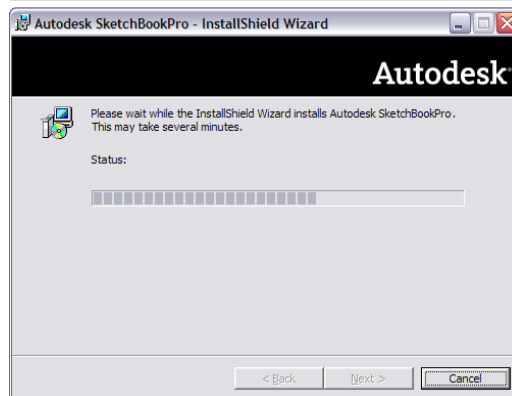
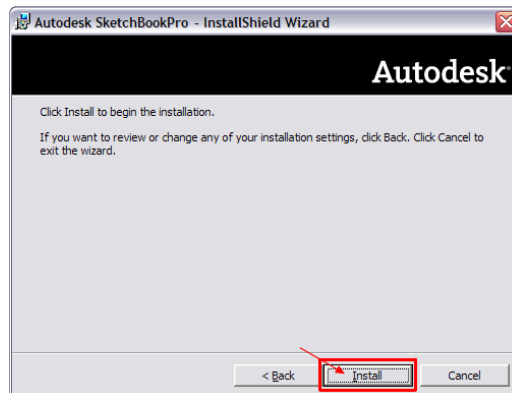
What is seen if you need to uninstall an old version of SketchBook.

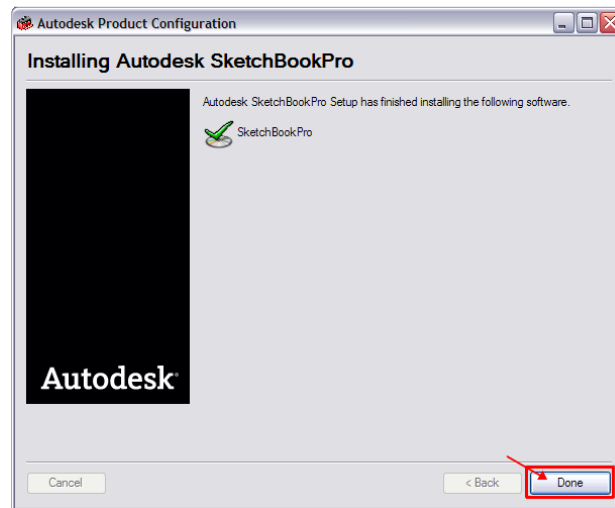


What is seen if all is fine.



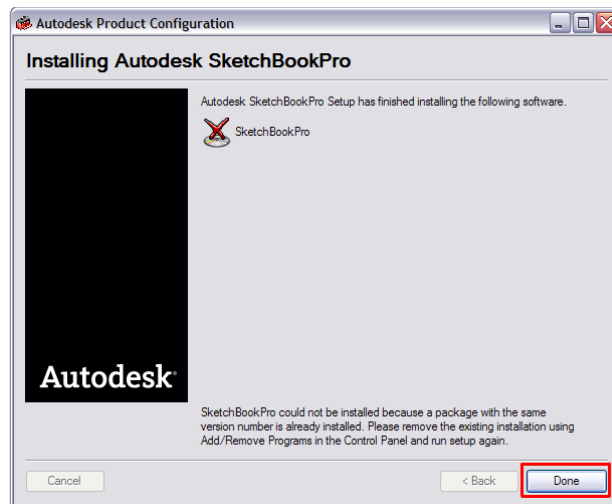






Manual installation

- 1 Download the Autodesk SketchBook Pro executable file, **Autodesk_Sketchbook_Pro_2010_ML_WIN_32_r1.exe**.
- 2 Double-click the **Autodesk_Sketchbook_Pro_2010_ML_WIN_32_r1.exe** file.
- 3 Follow the installation instructions.
If a previous version of the software is installed on your machine, you will see the screen that follows and will need to uninstall the old version of the software before continuing. Click **Done**, uninstall the software, then reinstall.



Uninstalling SketchBook Pro

- 1 Click the **Start** menu and select **Settings > Control Panel > Add or Remove Programs** to open a window.
- 2 Locate **Autodesk SketchBookPro 2010R1** and click the **Remove** button.
- 3 Click **Yes** when asked if you want to remove the software. The software will be removed and the window can be closed.

Now, repeat the installation process. See the previous section, *Installing on Windows (PC and Tablet PC)*, to continue.

Installing on Macintosh

There are two methods for installing SketchBookPro. For people with the SketchBookPro DVD, inserting it into your disc drive should start the installation process. However, if this is not the case or you are downloading the software from our web site, see **Manual installation**.

DVD installation

- 1 Place the SketchBookPro DVD into your disc drive, this opens a Finder window.

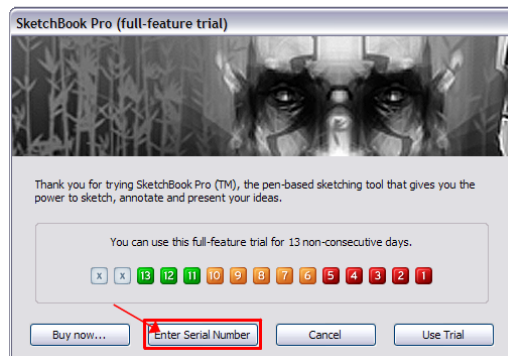
- 2 Double-click **Autodesk_Sketchbook_Pro_2010_ML_MAC_OSX_r1.mpkg** to launch the installer.
- 3 Follow the instructions. Please note that during the installation process, if you do not accept the licensing conditions, the installation is terminated.

Manual installation

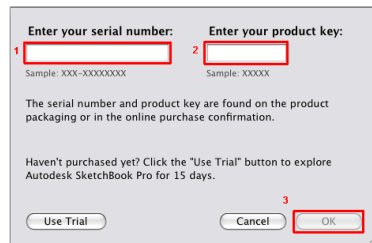
- 1 Download and double-click the disk image (.dmg) file, **Autodesk_Sketchbook_Pro_2010_ML_MAC_OSX_r1.dmg**.
- 2 Double-click the **Autodesk_Sketchbook_Pro_2010_2010_ML_MAC_OSX_r1.mpkg** file.
- 3 Follow the instructions. Please note that during the installation process, if you do not accept the licensing conditions, the installation is terminated.

Activate the software from a serial number

The first time you open SketchBook, the product activation window appears.



- 1 Click **Enter Serial Number** to enter your serial number and product key.

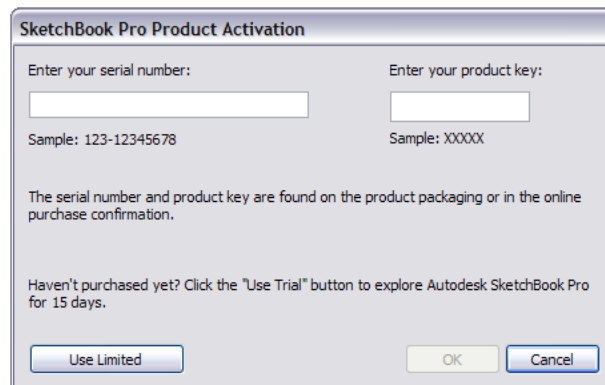


2 Click **OK**.

Entering a serial number

Besides going through the procedure above, there is another place where a serial number can be entered.

1 Select **Help > Enter Serial Number** to open the SketchBook Pro Product Activation window.




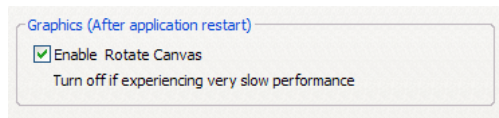
2 Enter the serial number and product key from the product packaging or online purchase confirmation, then click **OK**.

NOTE If you don't have a serial number, you can still use SketchBook by clicking **Use Trial** to install a 15 non-consecutive day trial version.

Improving performance

To improve performance, try the following suggestions:

- For Vista users, in your **Control Panel**, turn off **Pens and Input Devices**. Select **Control Panel > Pen and Input Devices > Pen Options > Pen Buttons > Use the pen button as a right-click equivalent**.
- Right-click on the SketchBook application icon  to select **Properties**. In the window that appears, check **Disable desktop compositing**.
- Select **Edit > Preferences** to open the **Preferences** window. In the **General** tab, in the **Graphics** section, deselect **Enable Rotate Canvas**. Click **OK**. Restart Sketchbook to improve performance.



NOTE When **Enable Rotate Canvas** is deselected, **Rotate Canvas** is not available.

Tablet PC setup

We recommend the following additional setup to get the best experience possible with a Tablet PC.

Tune system performance

For best performance, use the primary landscape orientation.

Some Tablet PC models run slower in portrait mode, due to hardware implementation. We recommend using landscape mode in this situation.

Fine tuning system performance

- 1 Go to your system's **Start** menu.
- 2 Select **Setting > Control Panel**.
- 3 Make sure the **Category View** is showing.



- 4 Select the **Printers and Other Hardware** category.
- 5 Select the **Tablet and Pen Settings** icon.
- 6 Under the **Display** tab, select the **Primary Landscape** screen orientation.

Selecting the best performance setting

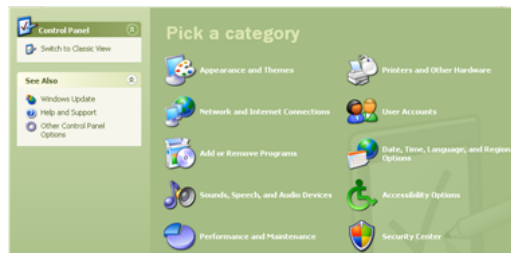
- 1 Go to your system's **Start** menu.
- 2 Select **Control Panel**.
- 3 Make the category view visible (the window contains the heading "Pick a category").
- 4 Select the **Performance and Maintenance** category.
- 5 Select the **Adjust Visual Effects** tab.
- 6 From the **Visual Effects** tab, select **Adjust for best performance**.

Disable the pop-up keyboard

When you wiggle the pen, a keyboard window appears. If you find this window interferes with your sketching workflow, you can temporarily disable the window as follows:

Disabling the pop-up keyboard

- 1 Go to the **Start** menu.
- 2 Select **Setting > Control Panel**.
- 3 Make sure the **Category View** is showing.



- 4 Select the **Printers and Other Hardware** category.
- 5 Select the **Tablet and Pen Setting** icon.
- 6 In the window that appears, select the **Pen Options** tab.
- 7 Under the **Pen Action** heading, select the **Start Input Panel Gesture** entry. It turns blue when selected.
- 8 Click the **Settings** button.
- 9 De-select the **Enable Start Input Panel Gesture** checkbox, which removes the checkmark.
When you enter text again (for example, to type a file name), turn this checkbox back on. As an alternative, try to increase the size threshold of the pen wiggle by increasing the value of the **Gesture** slider to **Large**.
- 10 Click **OK**.

Disable the mouse indicator

If a right mouse button indicator keeps popping up next to the pen, disable it as follows:

Disabling the mouse indicator

- 1 Go to the **Start** menu.
- 2 Select **Setting > Control Panel**.
- 3 Make sure the **Category View** is showing.



- 4 Select the **Printers and Other Hardware** category.
- 5 Select the **Tablet and Pen Settings** icon.
- 6 In the window that appears, select the **Pen Options** tab.
- 7 Under the **Pen Action** heading, select the **Press and Hold** entry. It turns blue when selected.
- 8 Click the **Settings** button.
- 9 In the window that appears, turn off the **Enable press and hold for right-click** checkbox.

Copyright and trademarks

2

© 2009 Autodesk, Inc. All Rights Reserved. Except as otherwise permitted by Autodesk, Inc., this publication, or parts thereof, may not be reproduced in any form, by any method, for any purpose.

Certain materials included in this publication are reprinted with the permission of the copyright holder.

Trademarks

The following are registered trademarks or trademarks of Autodesk, Inc., in the USA and other countries: 3DEC (design/logo), 3December, 3December.com, 3ds Max, ADI, Alias, Alias (swirl design/logo), AliasStudio, Alias|Wavefront (design/logo), ATC, AUGI, AutoCAD, AutoCAD Learning Assistance, AutoCAD LT, AutoCAD Simulator, AutoCAD SQL Extension, AutoCAD SQL Interface, Autodesk, Autodesk Envision, Autodesk Insight, Autodesk Intent, Autodesk Inventor, Autodesk Map, Autodesk MapGuide, Autodesk Streamline, AutoLISP, AutoSnap, AutoSketch, AutoTrack, Backdraft, Built with ObjectARX (logo), Burn, Buzzsaw, CAiCE, Can You Imagine, Character Studio, Cinestream, Civil 3D, Cleaner, Cleaner Central, ClearScale, Colour Warper, Combustion, Communication Specification, Constructware, Content Explorer, Create>what's>Next> (design/logo), Dancing Baby (image), DesignCenter, Design Doctor, Designer's Toolkit, DesignKids, DesignProf, DesignServer, DesignStudio, DesignStudio (design/logo), Design Web Format, Discreet, DWF, DWG, DWG (logo), DWG Extreme, DWG TrueConvert, DWG TrueView, DXF, Ecotect, Exposure, Extending the Design Team, Face Robot, FBX, Filmbox, Fire, Flame, Flint, FMDesktop, Freewheel, Frost, GDX Driver, Gmax, Green Building Studio, Heads-up Design, Heidi, HumanIK, IDEA Server, i-drop, ImageModeler, iMOUT, Incinerator, Inferno, Inventor, Inventor LT, Kaydara, Kaydara (design/logo), Kynapse, Kynogon, LandXplorer, LocationLogic, Lustre, Matchmover, Maya, Mechanical Desktop, Moonbox, MotionBuilder, Movimento, Mudbox, NavisWorks, ObjectARX, ObjectDBX, Open Reality, Opticore, Opticore Opus, PolarSnap, PortfolioWall, Powered with Autodesk Technology, Productstream, ProjectPoint, ProMaterials, RasterDWG, Reactor, RealDWG, Real-time Roto, REALVIZ, Recognize, Render Queue, Retimer,Reveal, Revit, Showcase, ShowMotion, SketchBook, Smoke, Softimage, Softimage|XSI (design/logo), SteeringWheels, Stitcher, Stone, StudioTools, Topobase, Toxik, TrustedDWG, ViewCube, Visual, Visual Construction, Visual Drainage,

Visual Landscape, Visual Survey, Visual Toolbox, Visual LISP, Voice Reality, Volo, Vtour, Wire, Wiretap, WiretapCentral, XSI, and XSI (design/logo).

The following are registered trademarks or trademarks of Autodesk Canada Co. in the USA and/or Canada and other countries: Backburner, Multi-Master Editing, River, and Sparks.

The following are registered trademarks or trademarks of MoldflowCorp. in the USA and/or other countries: Moldflow, MPA, MPA (design/logo), Moldflow Plastics Advisers, MPI, MPI (design/logo), Moldflow Plastics Insight, MPX, MPX (design/logo), Moldflow Plastics Xpert.

All other brand names, product names or trademarks belong to their respective holders.

Disclaimer

THIS PUBLICATION AND THE INFORMATION CONTAINED HEREIN IS MADE AVAILABLE BY AUTODESK, INC. "AS IS." AUTODESK, INC. DISCLAIMS ALL WARRANTIES, EITHER EXPRESS OR IMPLIED, INCLUDING BUT NOT LIMITED TO ANY IMPLIED WARRANTIES OF MERCHANTABILITY OR FITNESS FOR A PARTICULAR PURPOSE REGARDING THESE MATERIALS.

Published by:

Autodesk, Inc.

111 McInnis Parkway

San Rafael, CA 94903, USA

Please send us your comment about this page.