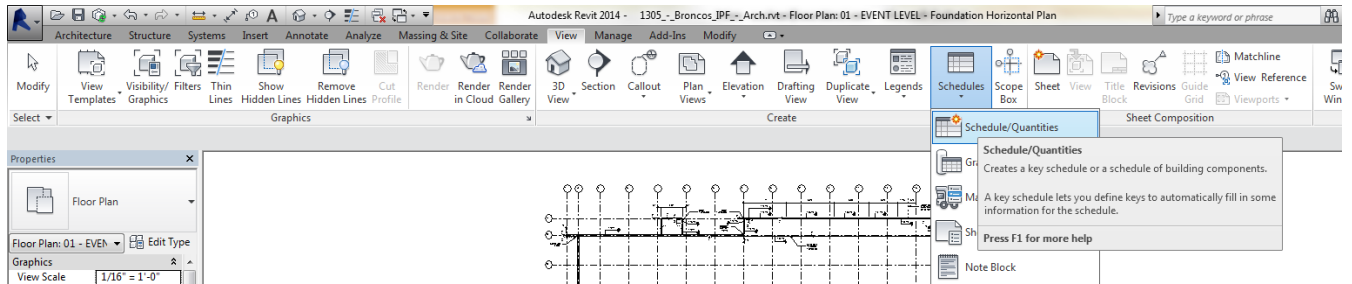


Using Revit to Create Room Locations

View – Schedules – Schedules/Quantities

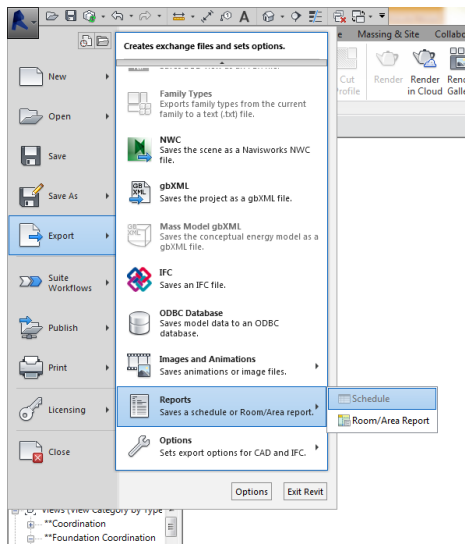


Select Rooms from the Category list

Select Level, Number and Name from the available fields. In that order.

OK.

When the schedule pops up, got to the “R” in the top left. Export, Reports, Schedule.



Save it somewhere easy to access.

Open the file you just created in Excel.

Insert a column A and insert "Interior".

	A	B	C	D
1		Room Schedule 2		
2		Level	Number	Name
3				
4	Interior	01 - EVENT LEVEL	106	STORAGE
5	Interior	01 - EVENT LEVEL	108	PIT ACCESS
5	Interior	01 - EVENT LEVEL	110	JAN
7	Interior	01 - EVENT LEVEL	114	COACH LOCKER
3	Interior	01 - EVENT LEVEL	112	HALL
9	Interior	01 - EVENT LEVEL	S003	STAIR 3
0	Interior	01 - EVENT LEVEL	120	HYDRO
1	Interior	01 - EVENT LEVEL	119	STORAGE
2	Interior	01 - EVENT LEVEL	117	ENTRY
3	Interior	01 - EVENT LEVEL	127	MULTI-PURPOSE
4	Interior	01 - EVENT LEVEL	S001	STAIR 1
5	Interior	01 - EVENT LEVEL	122	HALL
6	Interior	01 - EVENT LEVEL	124A	DRYING
7	Interior	01 - EVENT LEVEL	123	LAVATORY
8	Interior	01 - EVENT LEVEL	123A	DRYING
9	Interior	01 - EVENT LEVEL	124	LAVATORY
0	Interior	01 - EVENT LEVEL	113	ELEC
1	Interior	Not Placed	111	ELEV EQUIP
2	Interior	01 - EVENT LEVEL	115	LAUNDRY
3	Interior	01 - EVENT LEVEL	116	HALL
4	Interior	01 - EVENT LEVEL	116	ENTRY

Use the PROPER function to correct the upper case issue if required.

Combine the rows using CONCATENATE.

=CONCATENATE(A4,">",B4,">",C4," ",D4)

E4		fx =CONCATENATE(A4,">",B4,">",C4," ",D4)						
	A	B	C	D	E	F	G	H
1		Room Schedule 2						
2		Level	Number	Name				
3								
4	Interior	01 - Event Level	106	Storage	Interior>01 - Event Level>106 Storage			
5	Interior	01 - Event Level	108	Pit Access	Interior>01 - Event Level>108 Pit Access			
6	Interior	01 - Event Level	110	Jan	Interior>01 - Event Level>110 Jan			
7	Interior	01 - Event Level	114	Coach Locker	Interior>01 - Event Level>114 Coach Locker			
8	Interior	01 - Event Level	112	Hall	Interior>01 - Event Level>112 Hall			
9	Interior	01 - Event Level	S003	Stair 3	Interior>01 - Event Level>S003 Stair 3			
10	Interior	01 - Event Level	120	Hydro	Interior>01 - Event Level>120 Hydro			

Take the data and enter it into the Location Template. The number row can be copied and pasted into the Barcode column as well. Check your final product. This will be uploaded and create your locations.