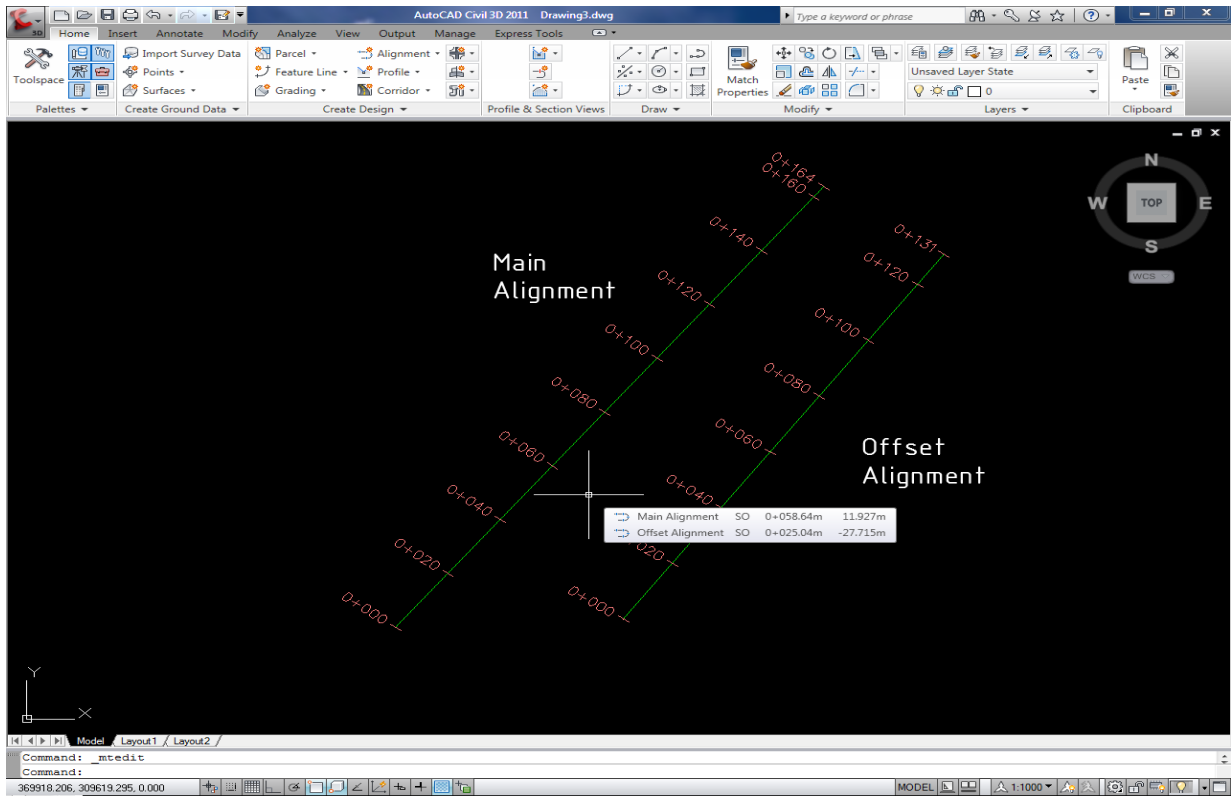
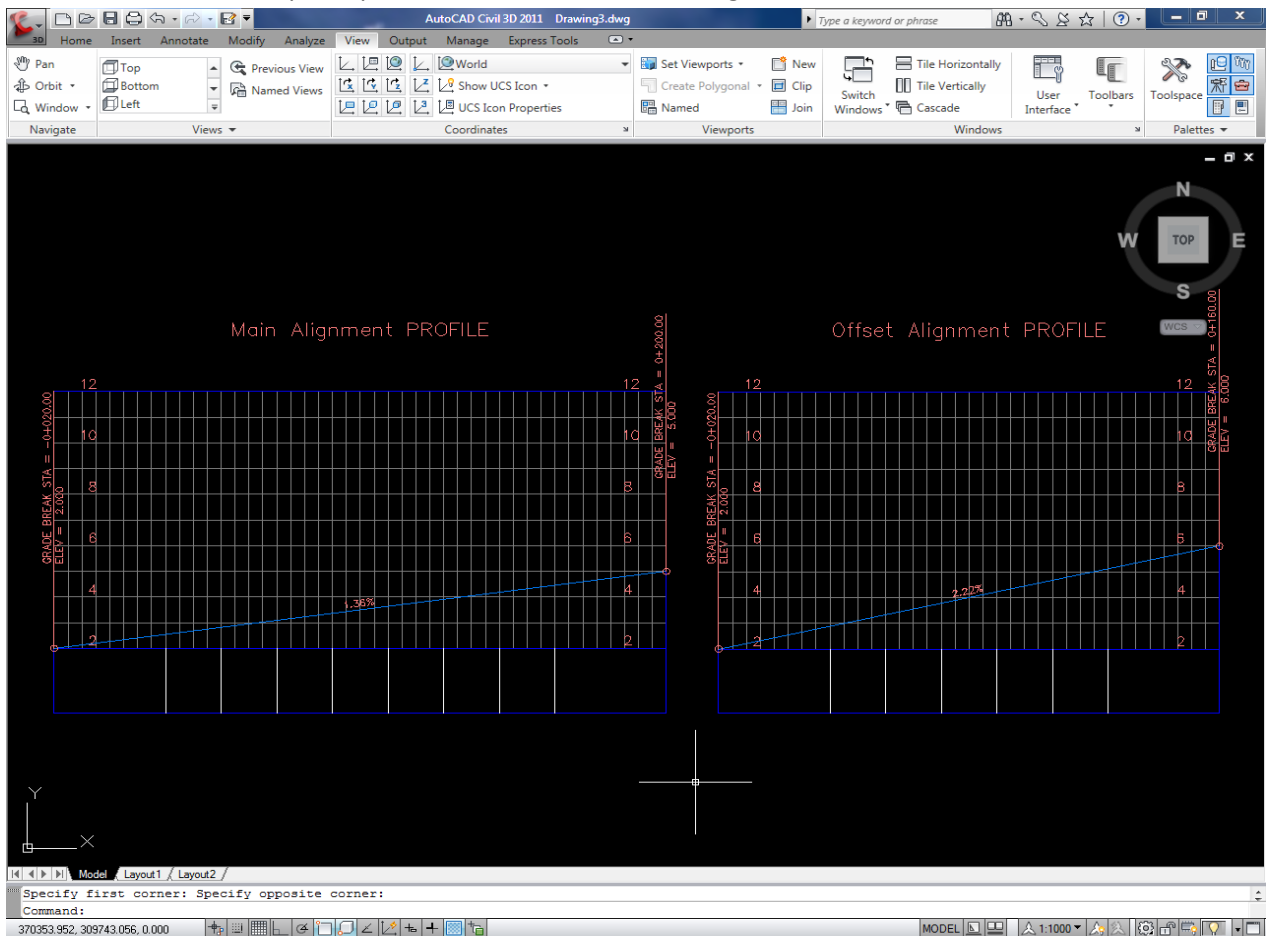


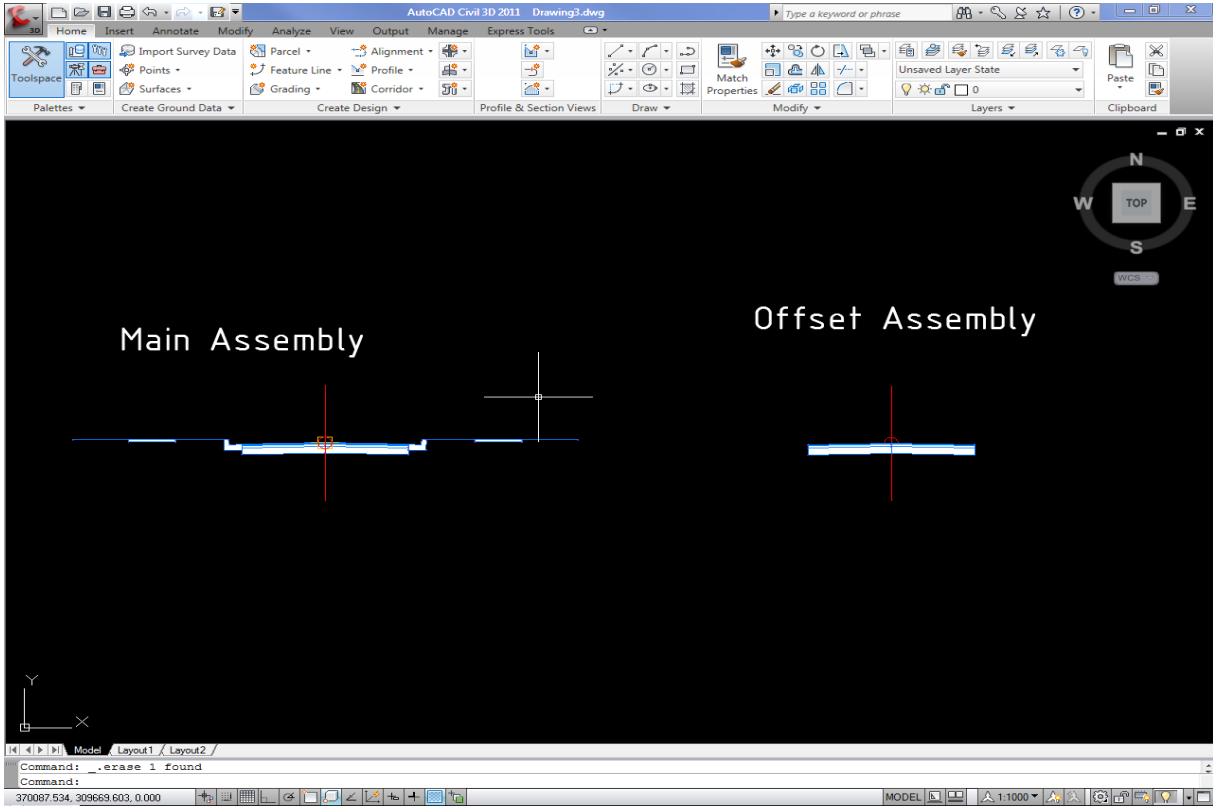
1. Create two Alignments: **Main alignment, Offset Alignment.**



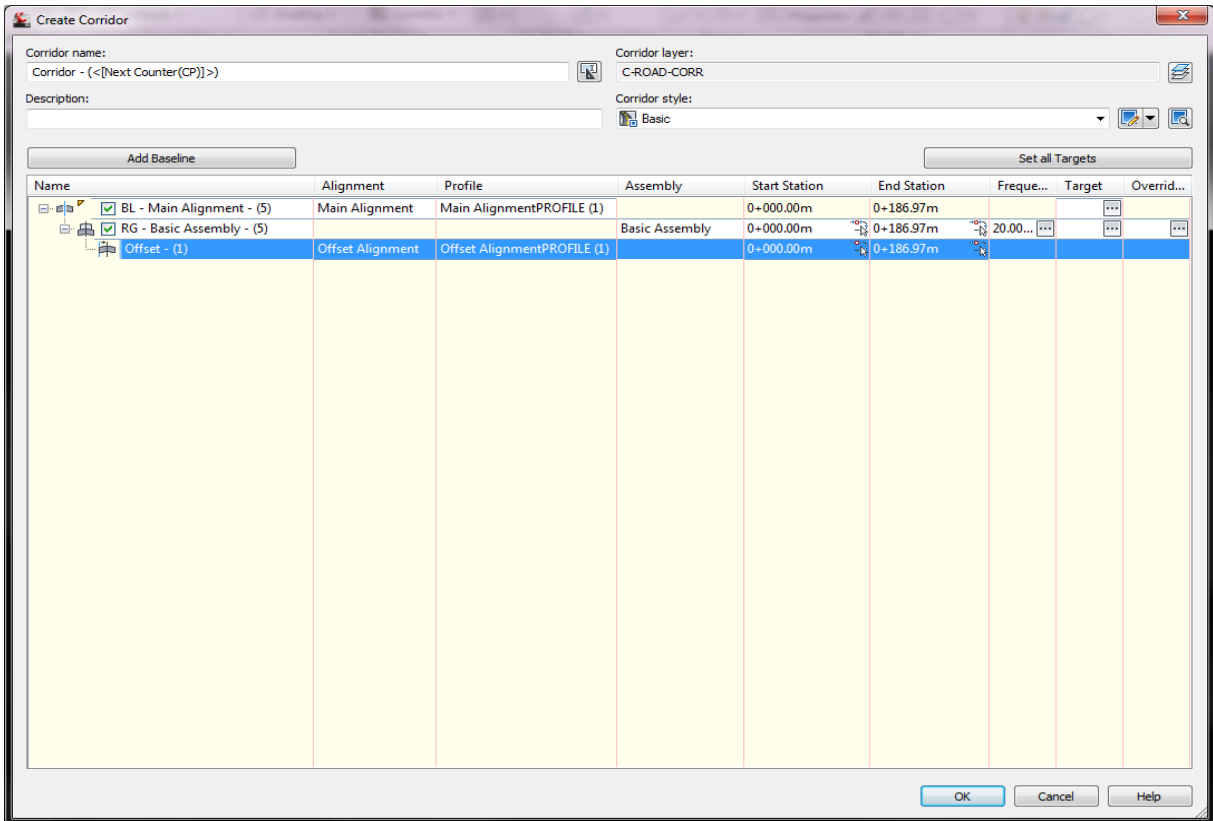
2. Create two simplest profiles for Main and Offset Alignments.



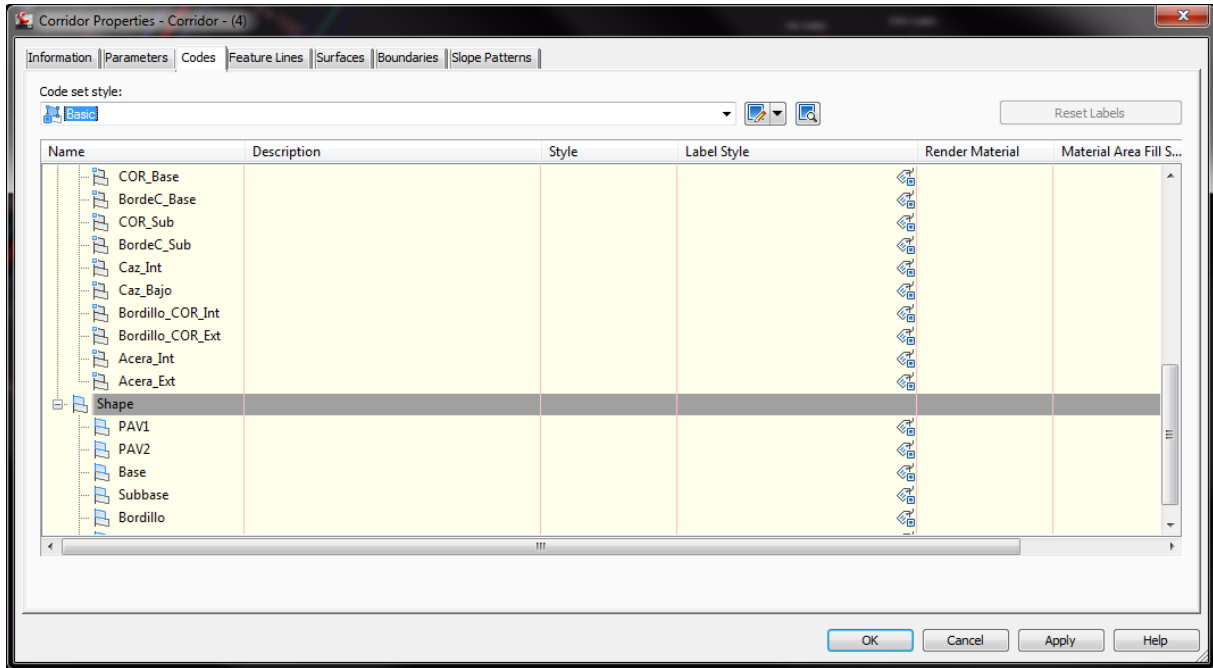
3. Create Assembly with Assembly Offset. (I used simplest **Basic Assembly** from Toolpalettes, (deleted Daylight Subassemblies – no surface target here)for Main and just copied left and right **LaneOutsideSuper** Subassemblies for Offset Assembly)



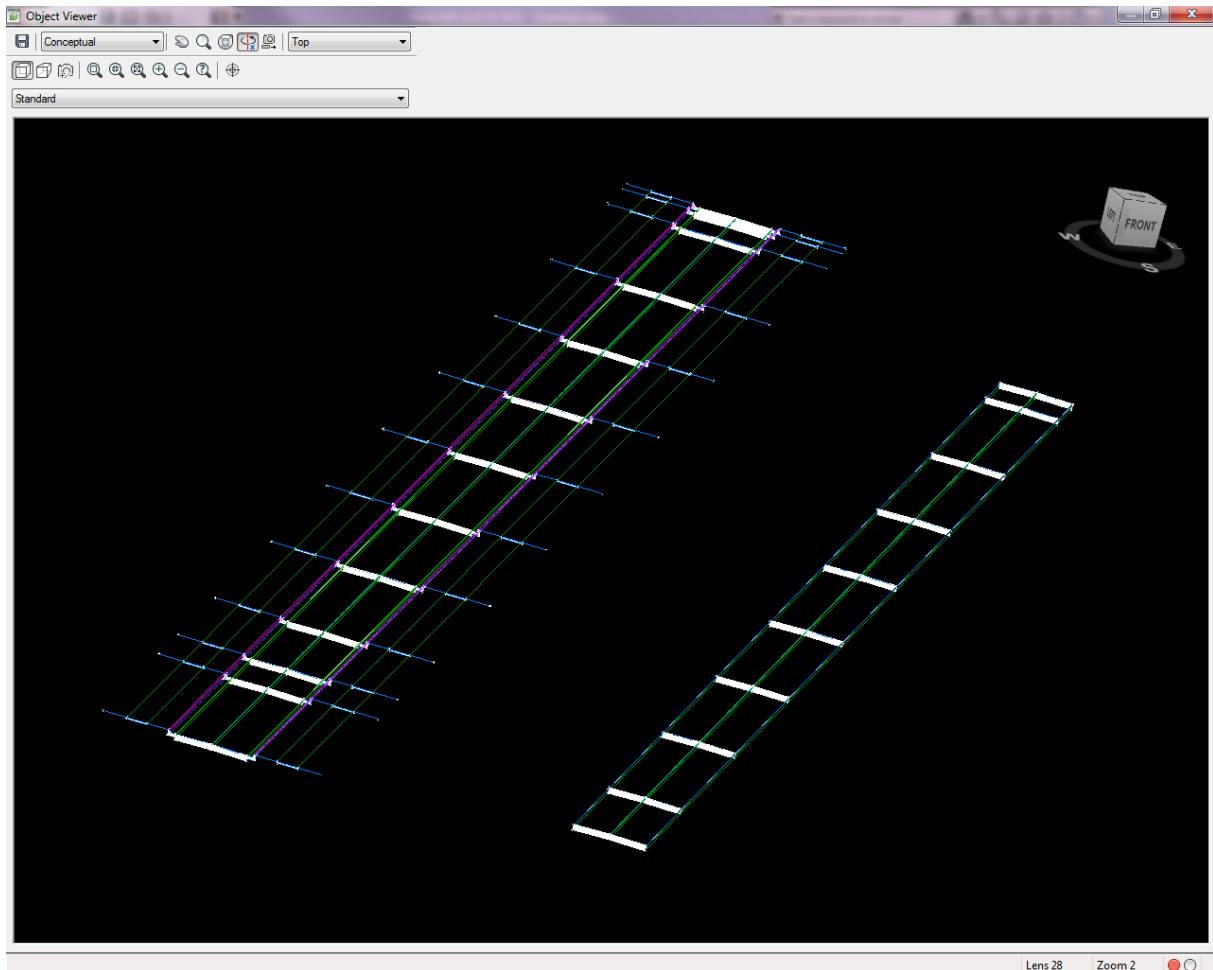
4. Create corridor and map offset alignment and its profile



Change just created corridor code set style from **All Codes** to **Basic**.

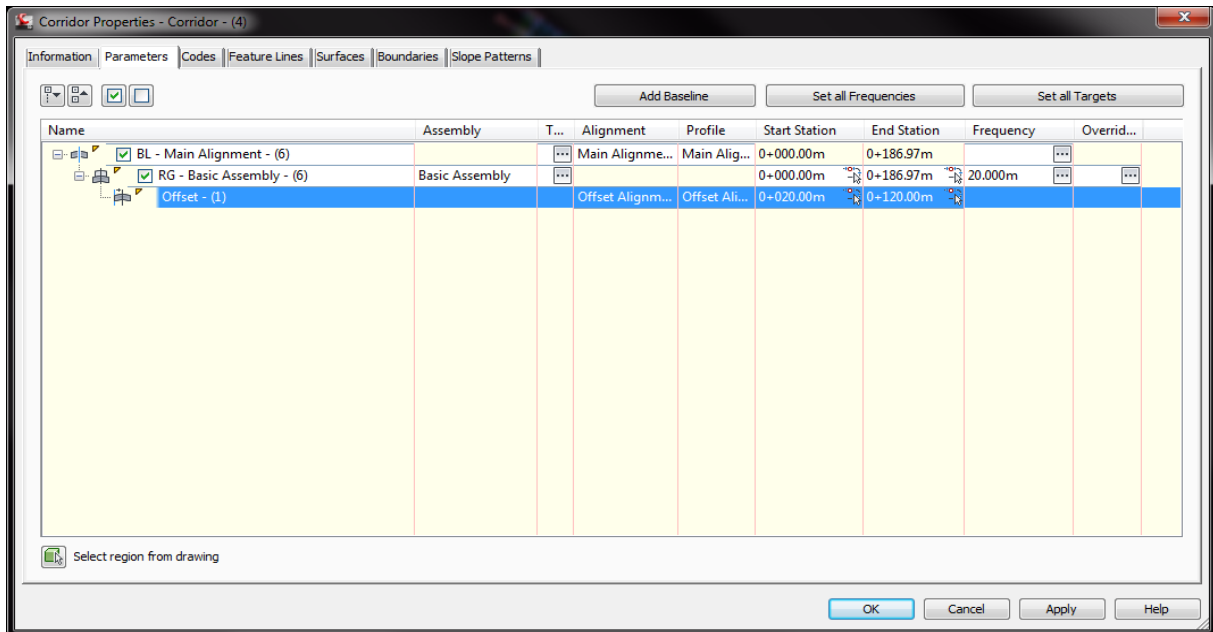


See corridor in Object Viewer:

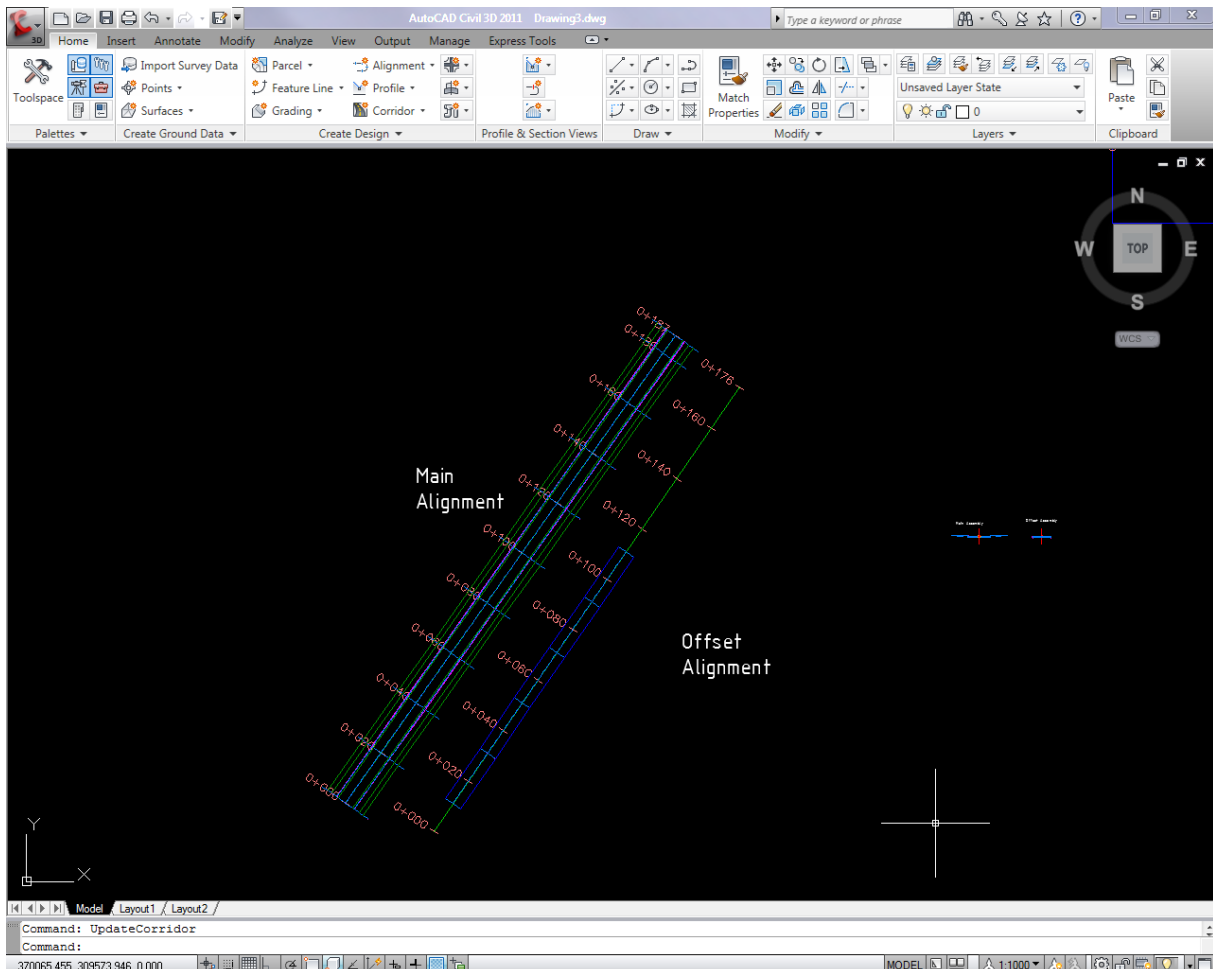


It seems it is all OK right now – All feature lines, sections etc. are present here.

Change Offset Alignment Start and End Stations to 0+020, 0+120

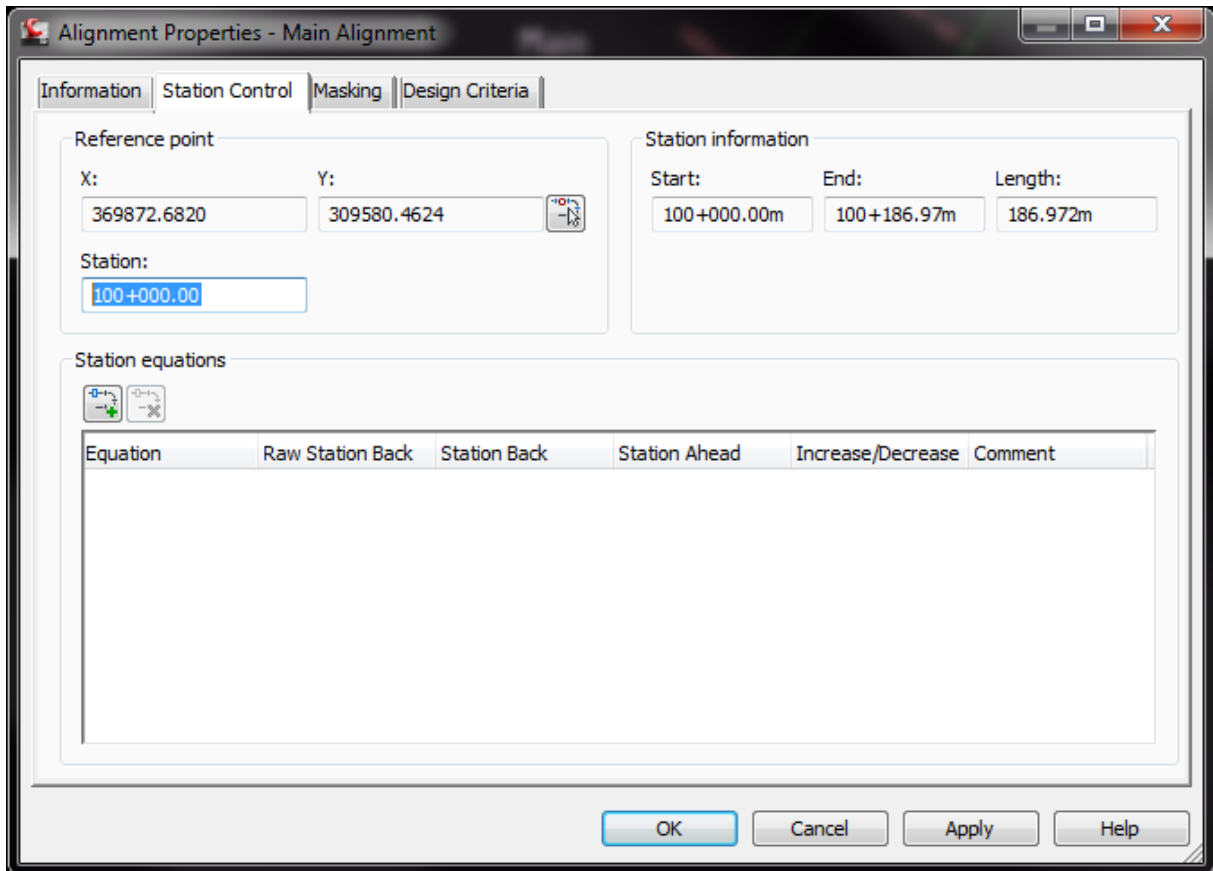


Its OK - offset alignment is at Main Alignments 0+020 – 0+120

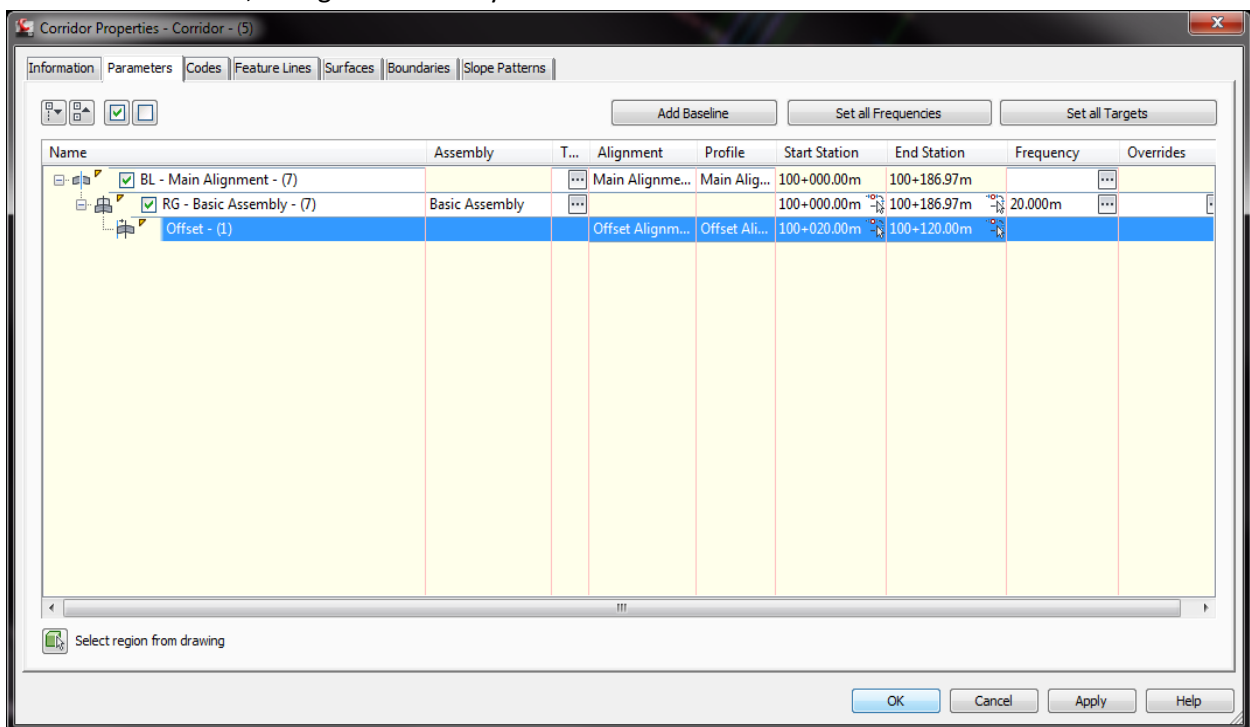


Delete created corridor.

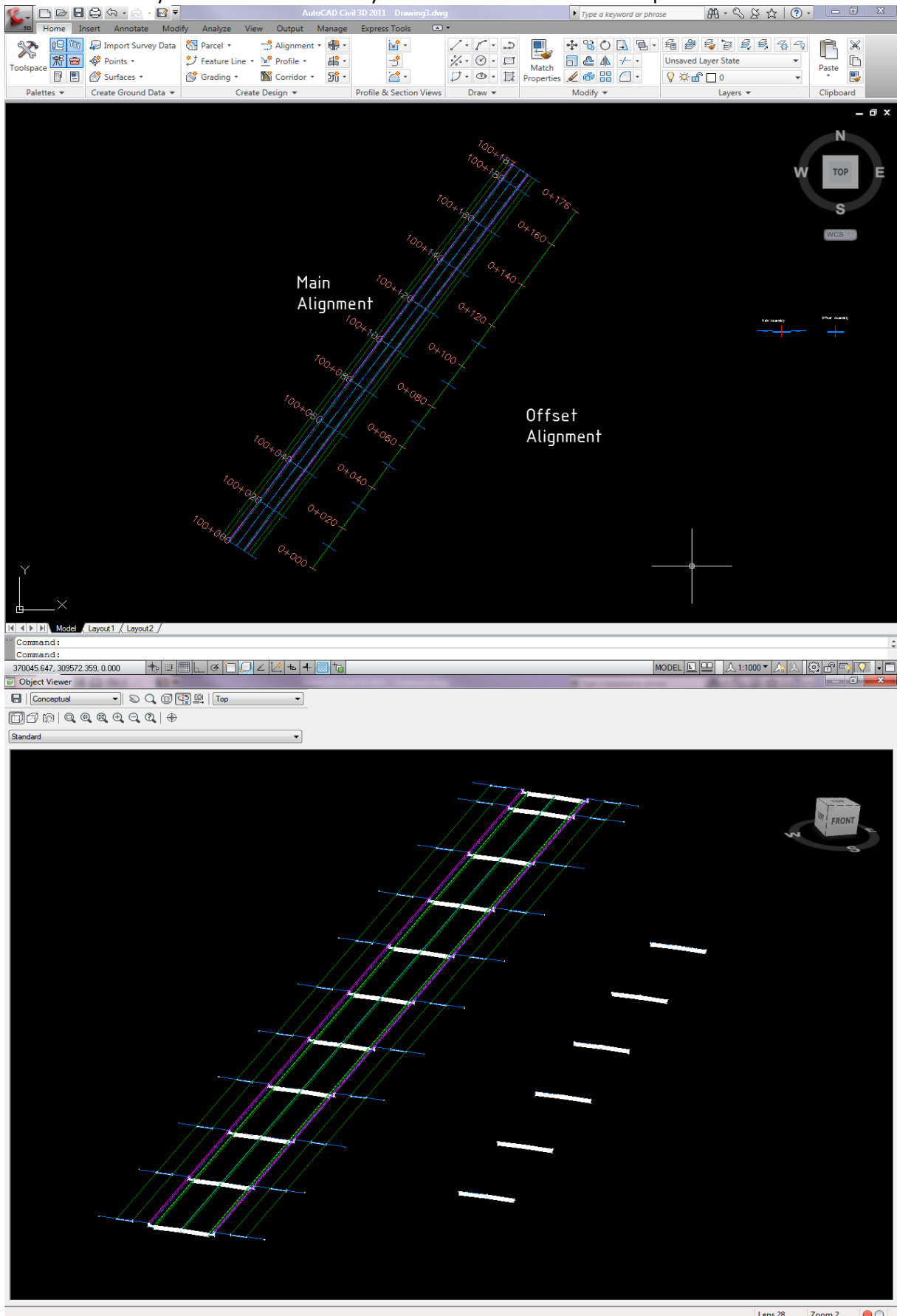
Change main alignment start station to 100+00.



Create new corridor, change Code Set Style to **Basic**:



We cannot see any **Feature Lines** in Corridor Assembly Offset! Offset assembly points are not connected as they should be. We see only crosssections of offset corridor part .



So Main Alignment starts at 100+00 (like part of big main road) and Offset Alignment starts at 0+00. If we change Main Alignment start station to 0+00 or Offset Alignment Start station to 100+00, its OK – feature lines are shown.



This issue happens, if Main alignment stations are much greater/lower than Offset Alignment Stations.