

Basics

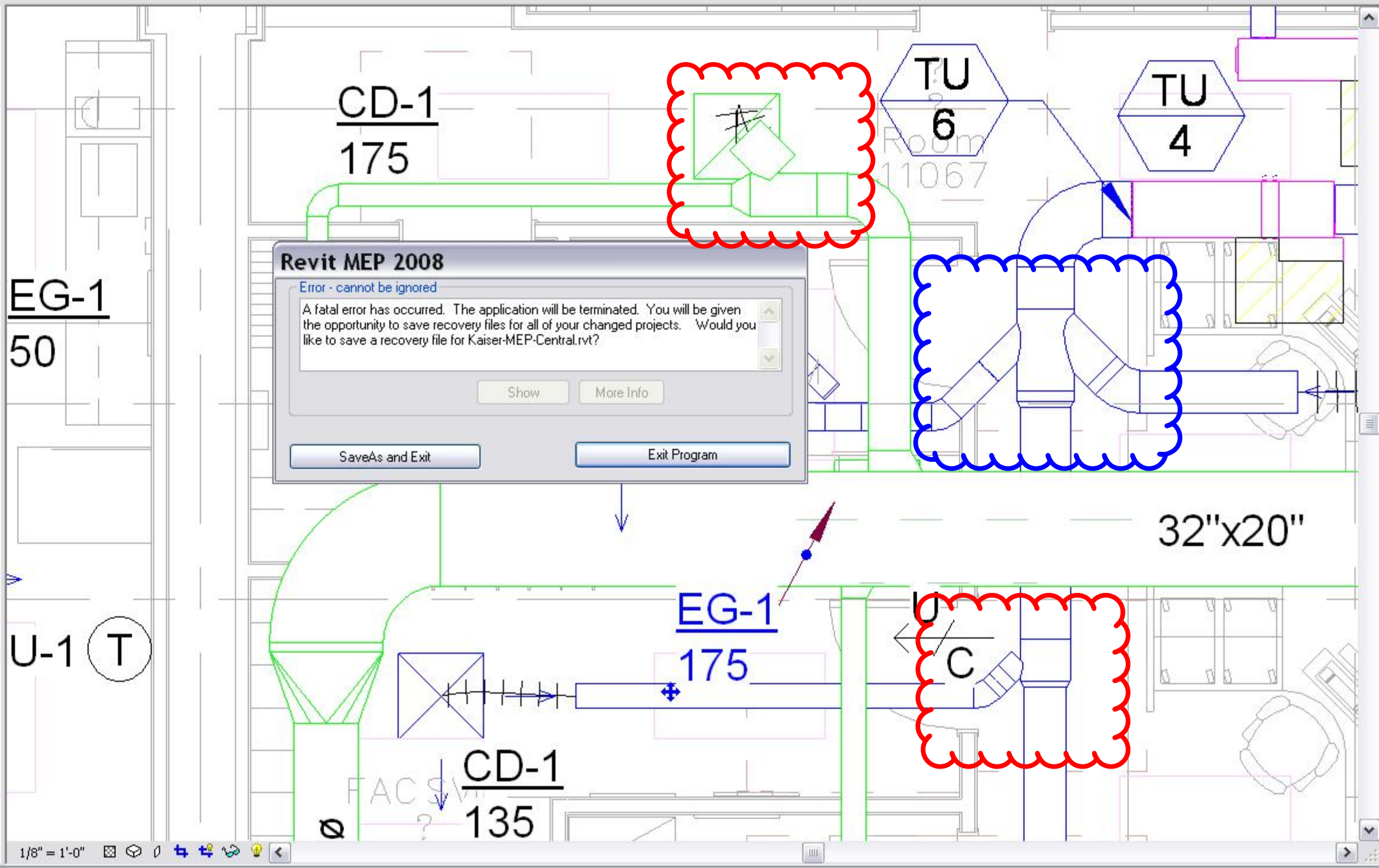
- Modify
- Room
- Duct
- Flex Duct
- Air Terminal
- Mechanical E
- Pipe
- Light Fixture
- Device
- Wire
- Electrical Eq.
- Lines
- Tag >
- Section
- Level
- Text
- Schedule/Qu

View

- Architectural
- Drafting
- Rendering
- Massing
- Room and Area
- Construction
- Mechanical
- Electrical
- Piping
- Plumbing
- Fire Protection

Kaiser-MEP-Centra...

- Views (Discipline)
 - Architectural
 - Coordination
 - ???
 - Electrical 3D Vi
 - 3D Views
 - Electrical Comr
 - Floor Plan:
 - Electrical Fire A
 - Floor Plan:
 - Fire Ale
 - Fire Ale
 - Fire Ale
 - Fire Ale
 - Electrical Lightir
 - Floor Plan:
 - Electrical Nurse
 - Floor Plan:
 - Electrical Power
 - Floor Plan:
 - HVAC
 - Floor Plan:
 - Mecha
 - Mecha
 - Mecha
 - Mecha
 - Mecha
 - Ceiling Plar
 - Level
 - Level
 - Level
 - Level
 - 3D Views
 - Plumbing
 - Plumbing 3d Vie
- Legends
- Schedules/Quantitie
- Sheets (MEP)
- Families
- Groups
- Revit Links



Revit MEP 2008

Error - cannot be ignored

A fatal error has occurred. The application will be terminated. You will be given the opportunity to save recovery files for all of your changed projects. Would you like to save a recovery file for Kaiser-MEP-Central.rvt?

Show More Info

SaveAs and Exit Exit Program