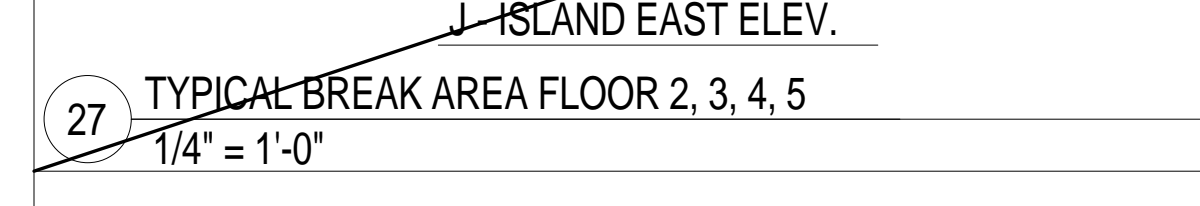
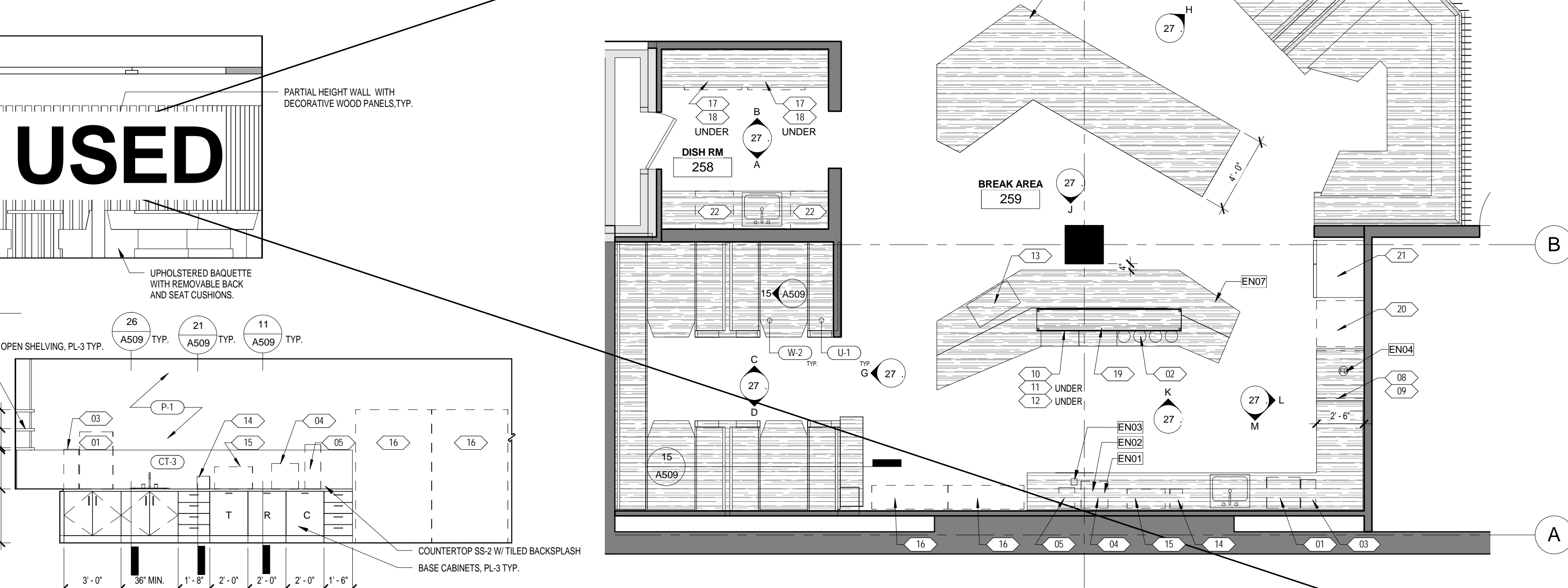
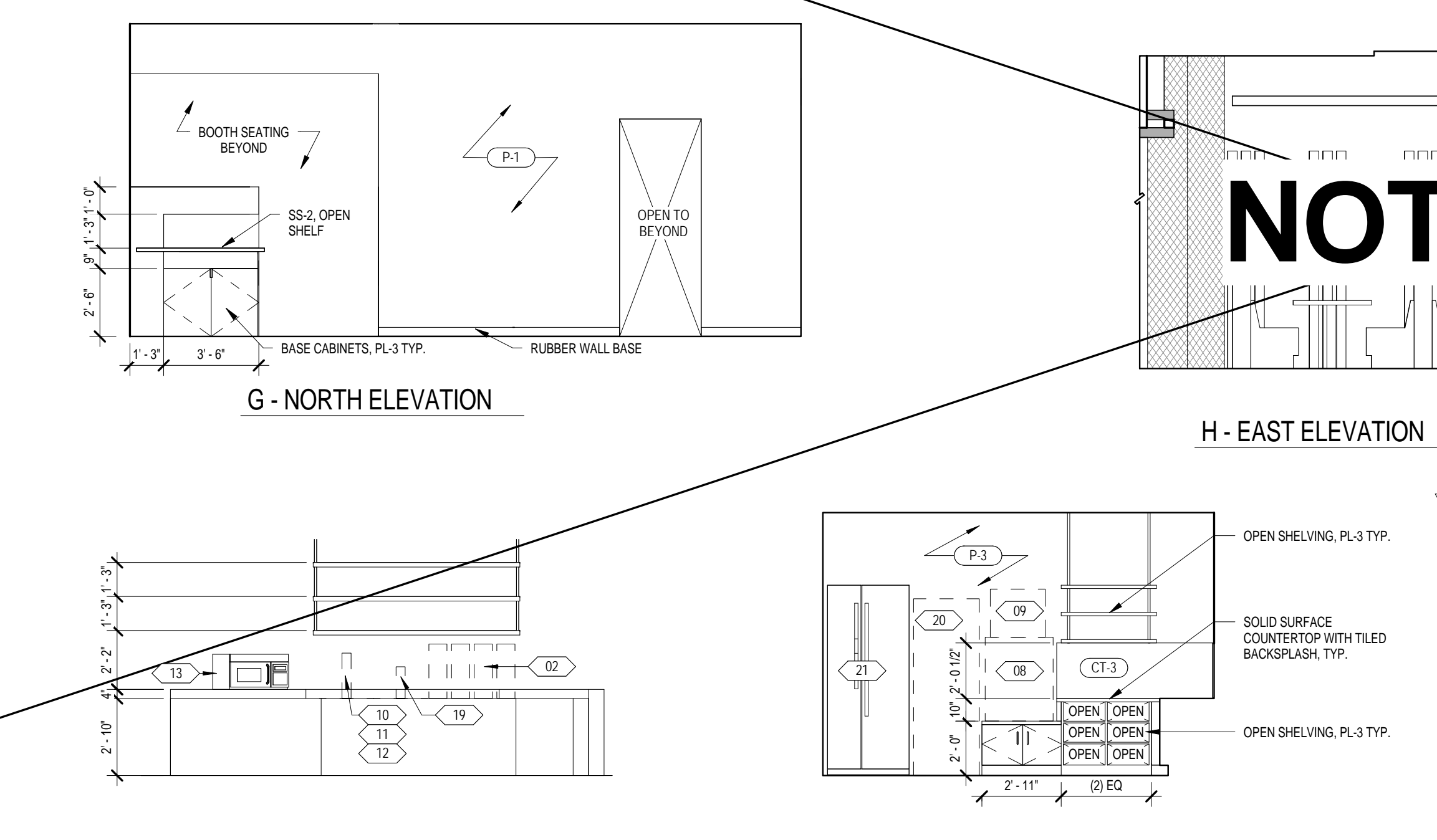
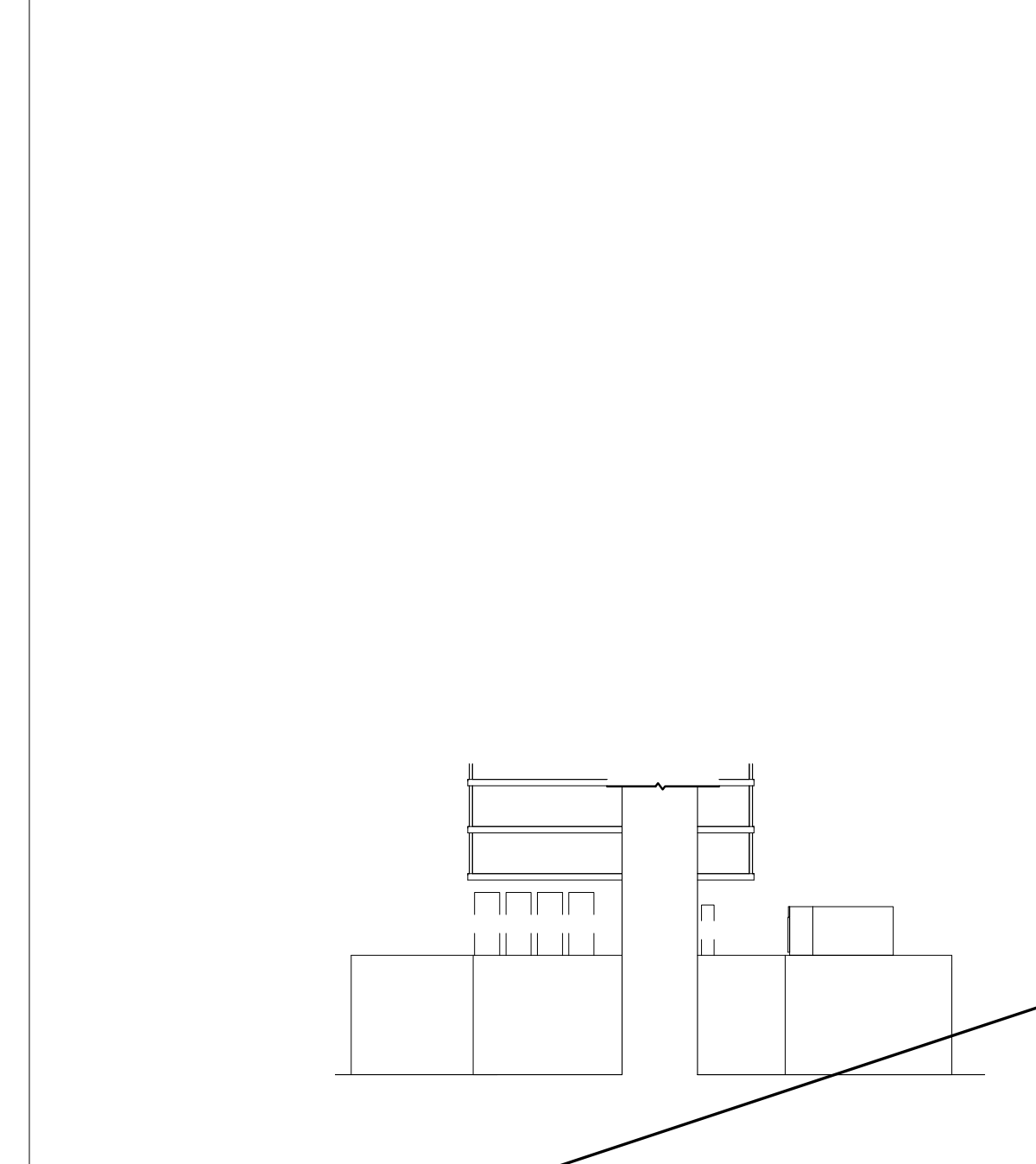
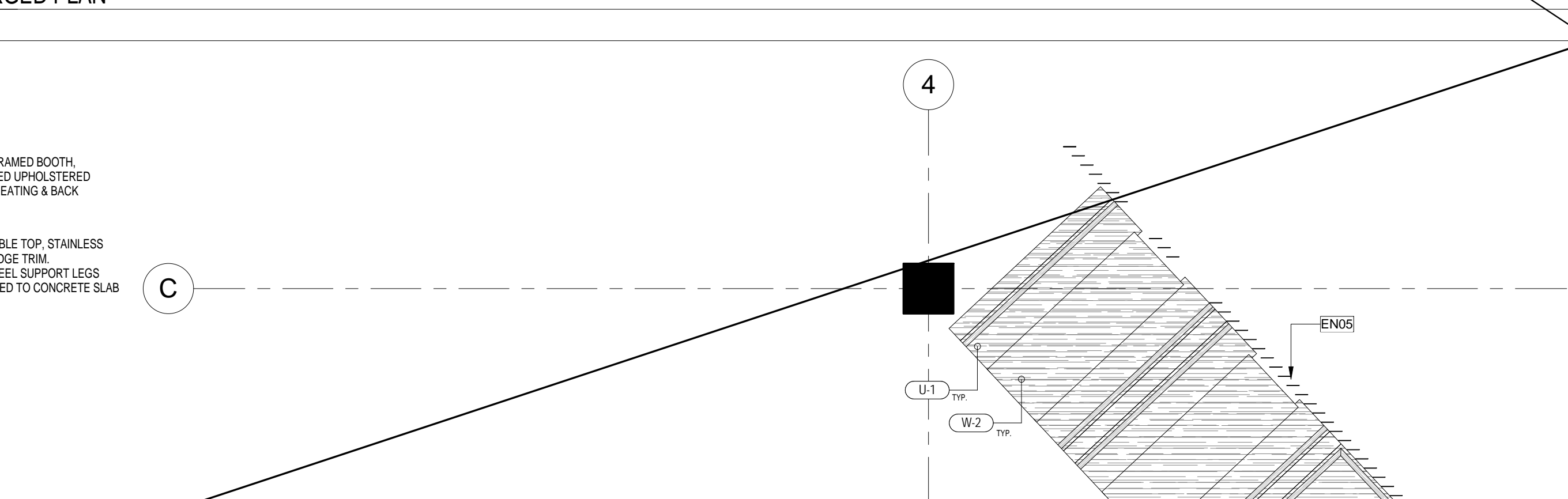
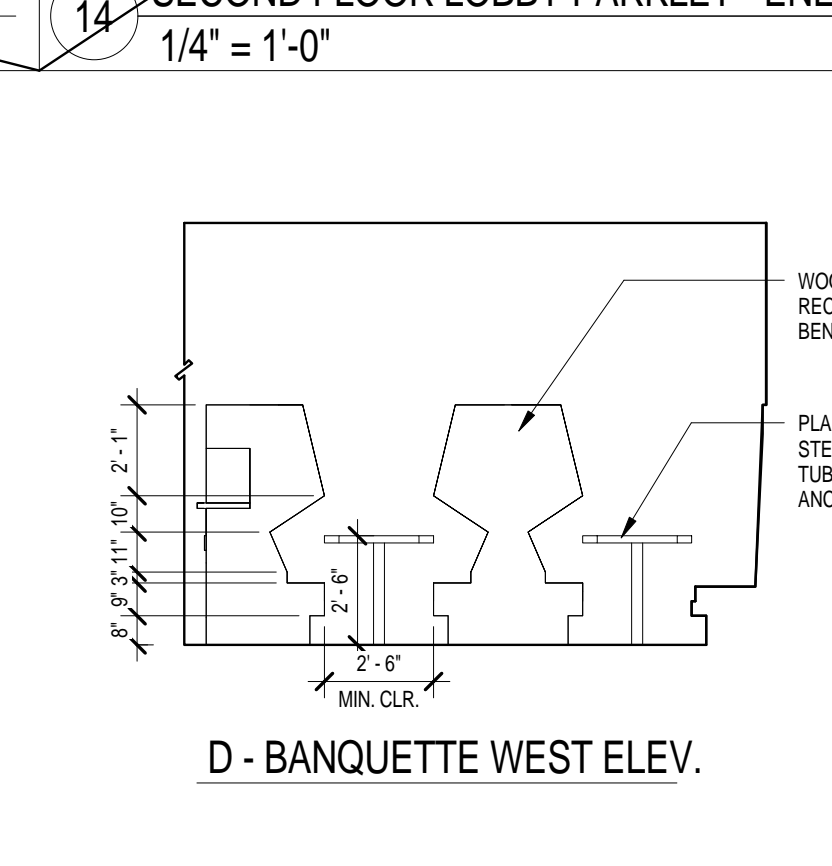
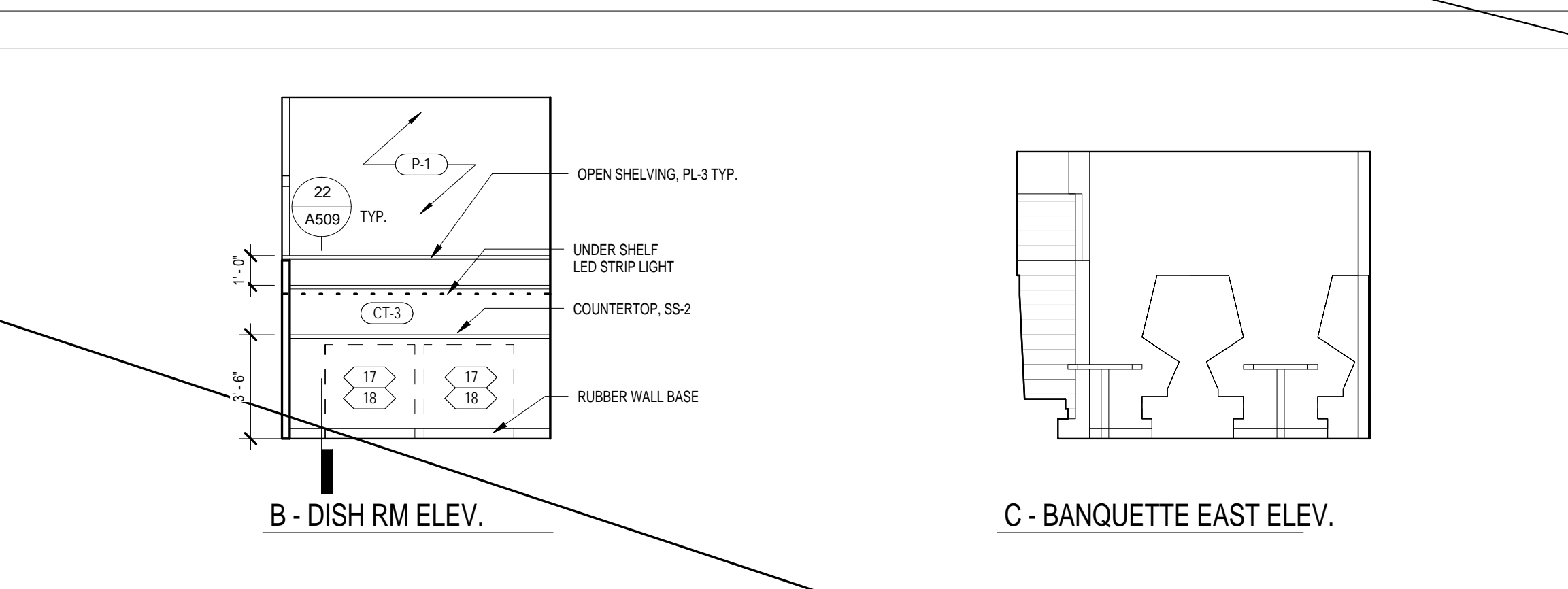
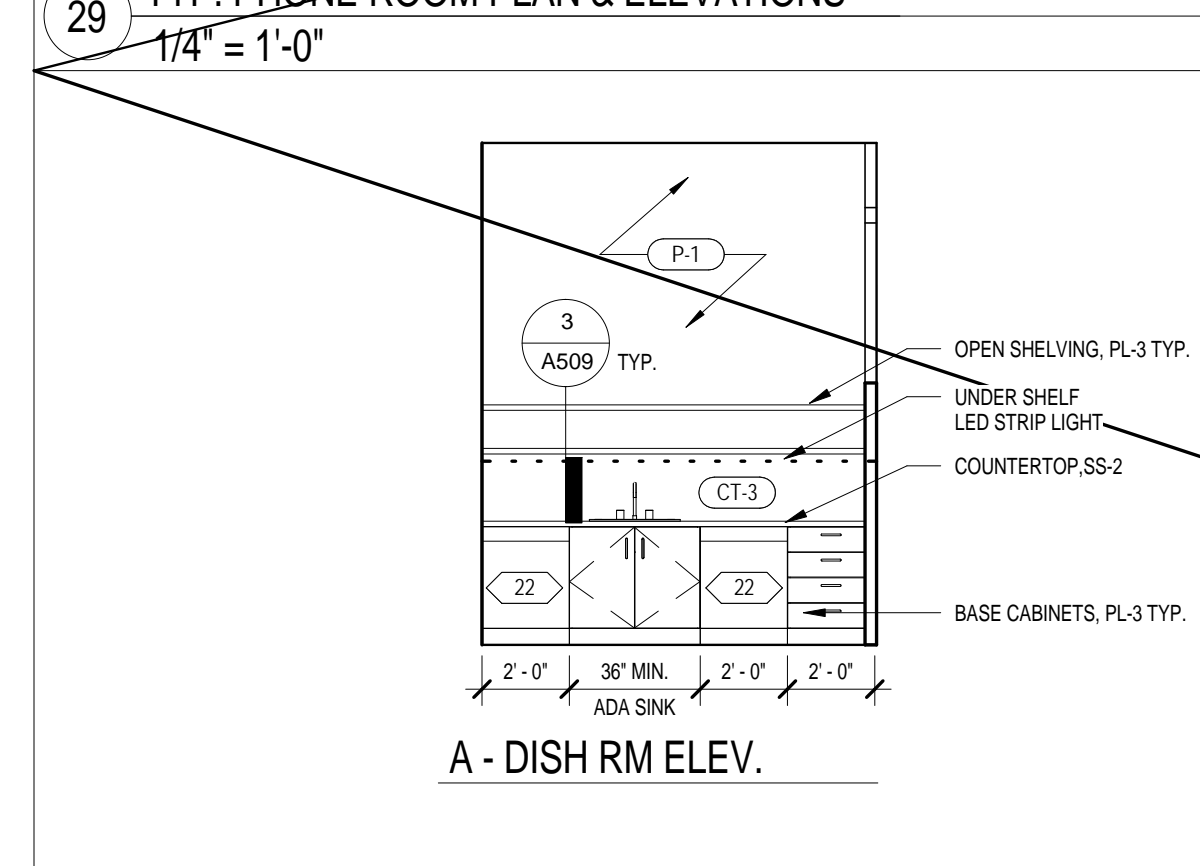
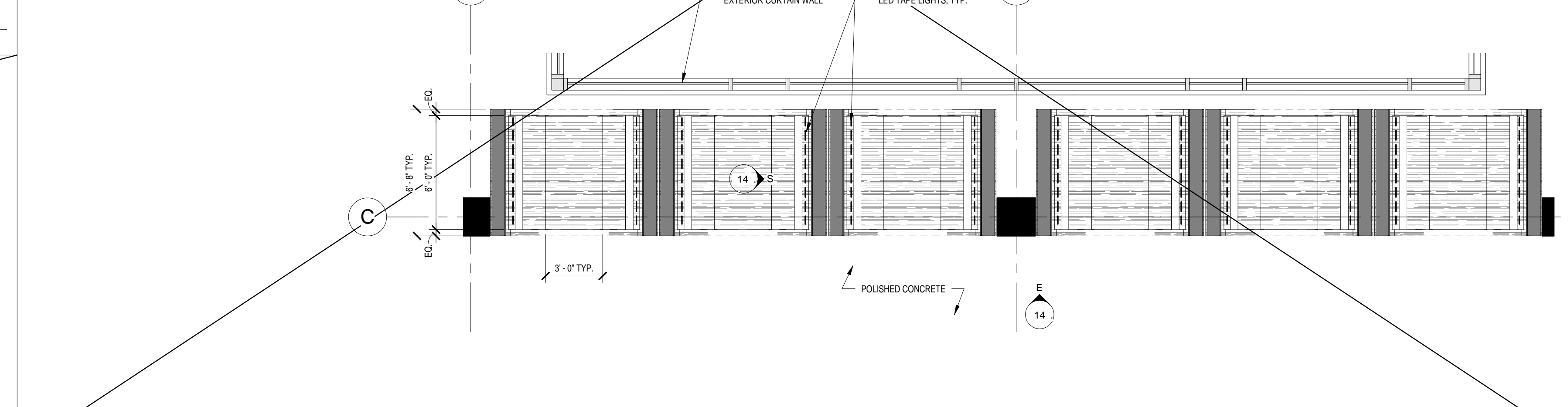
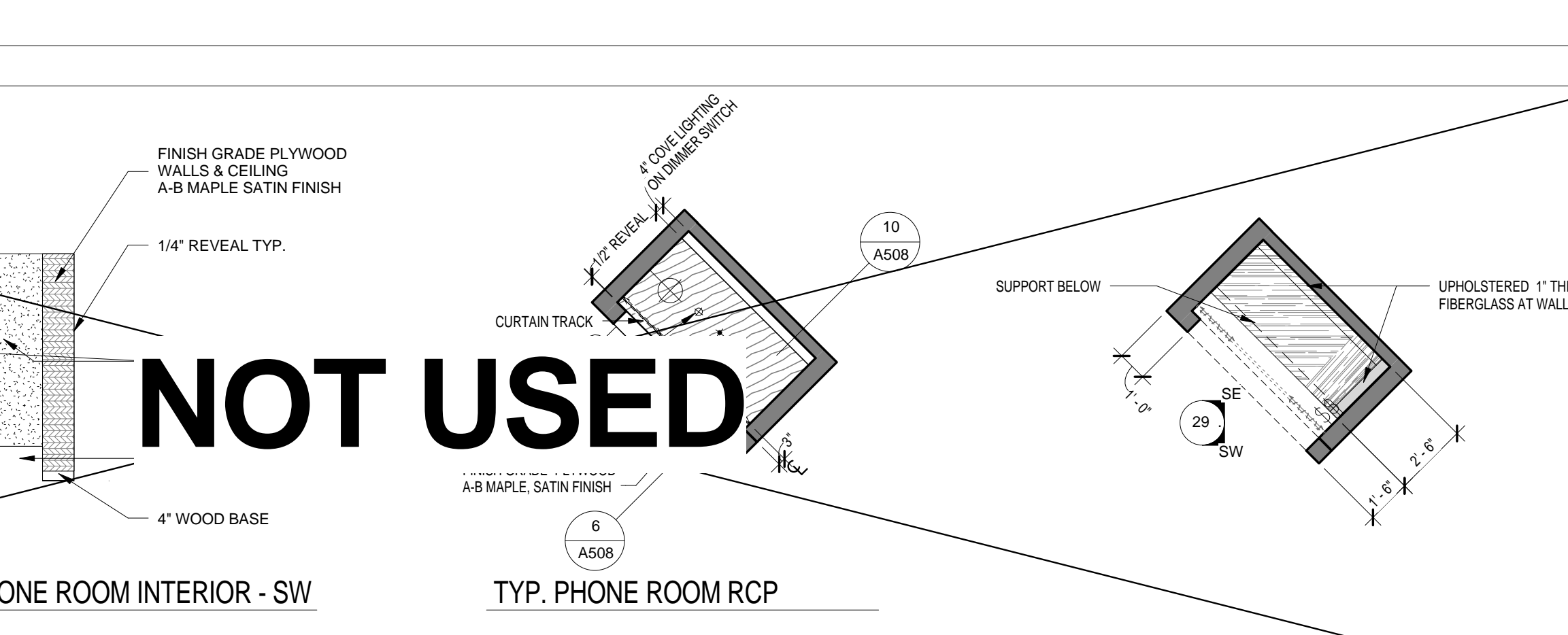
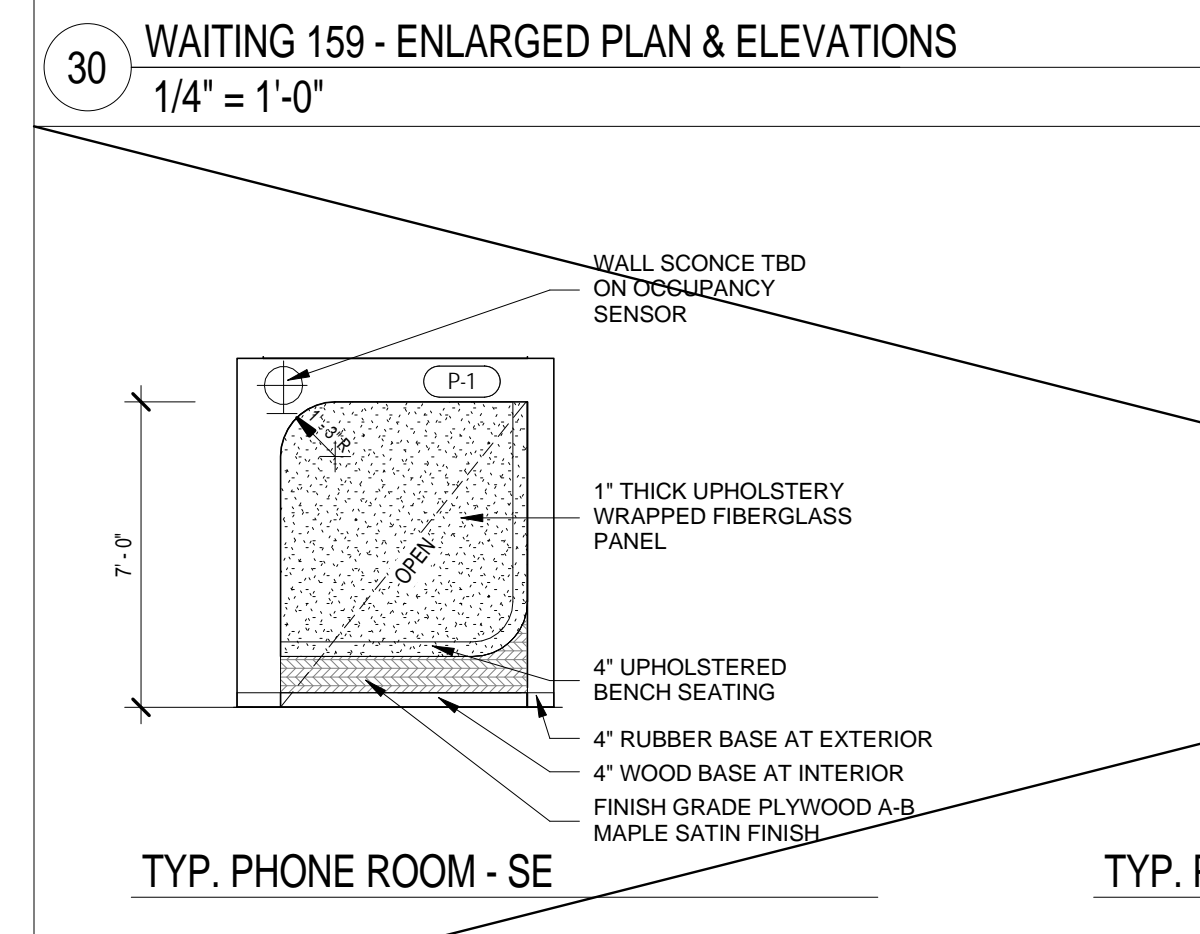
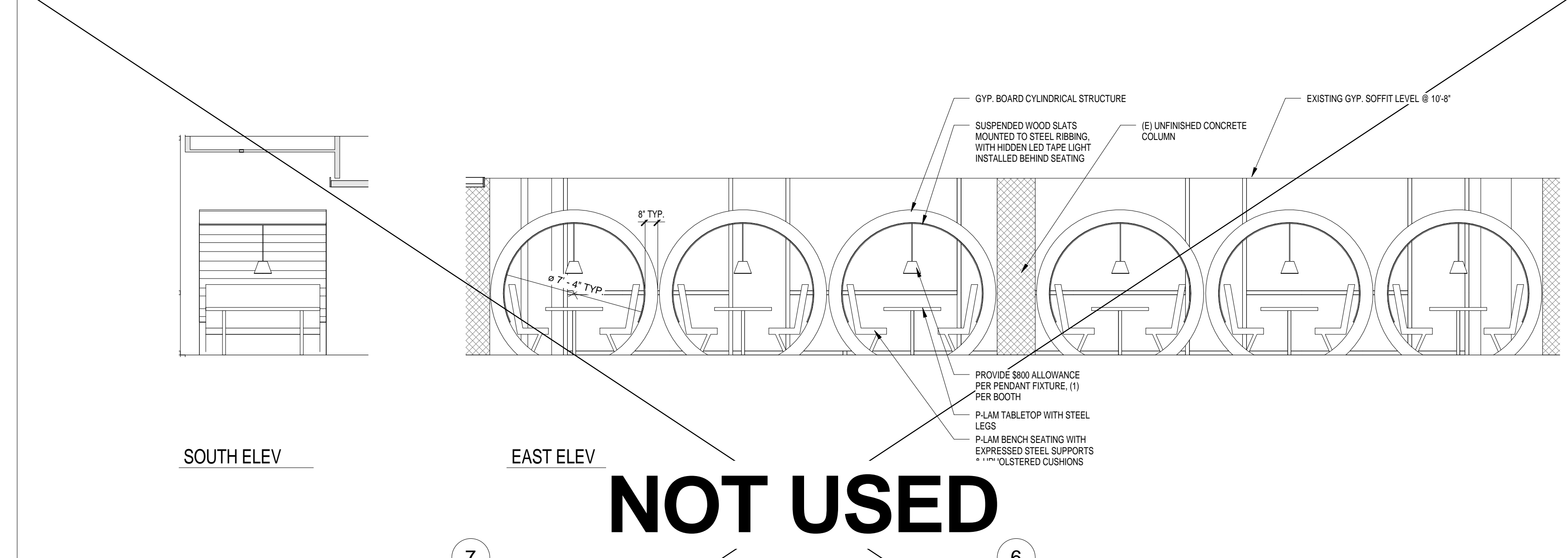
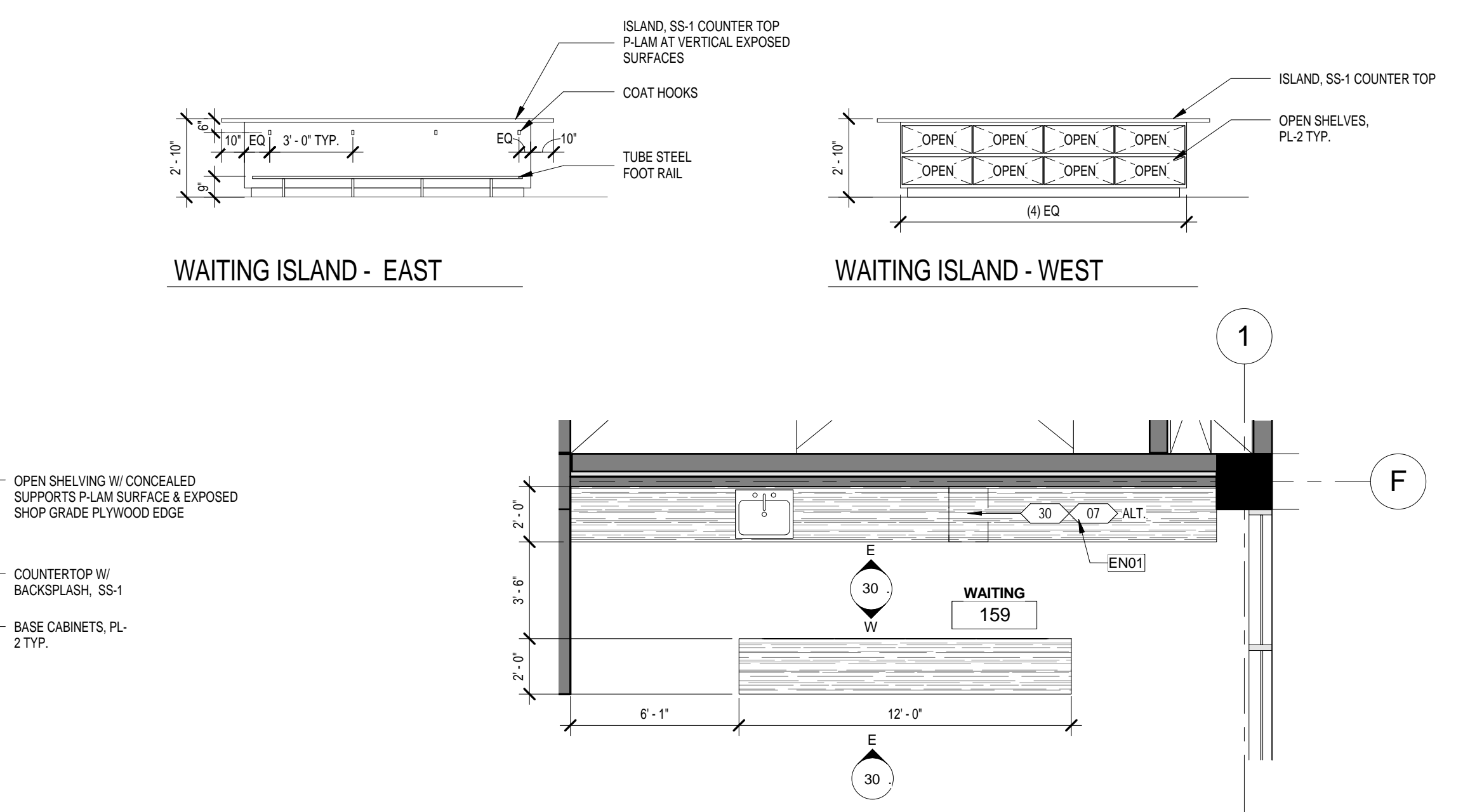
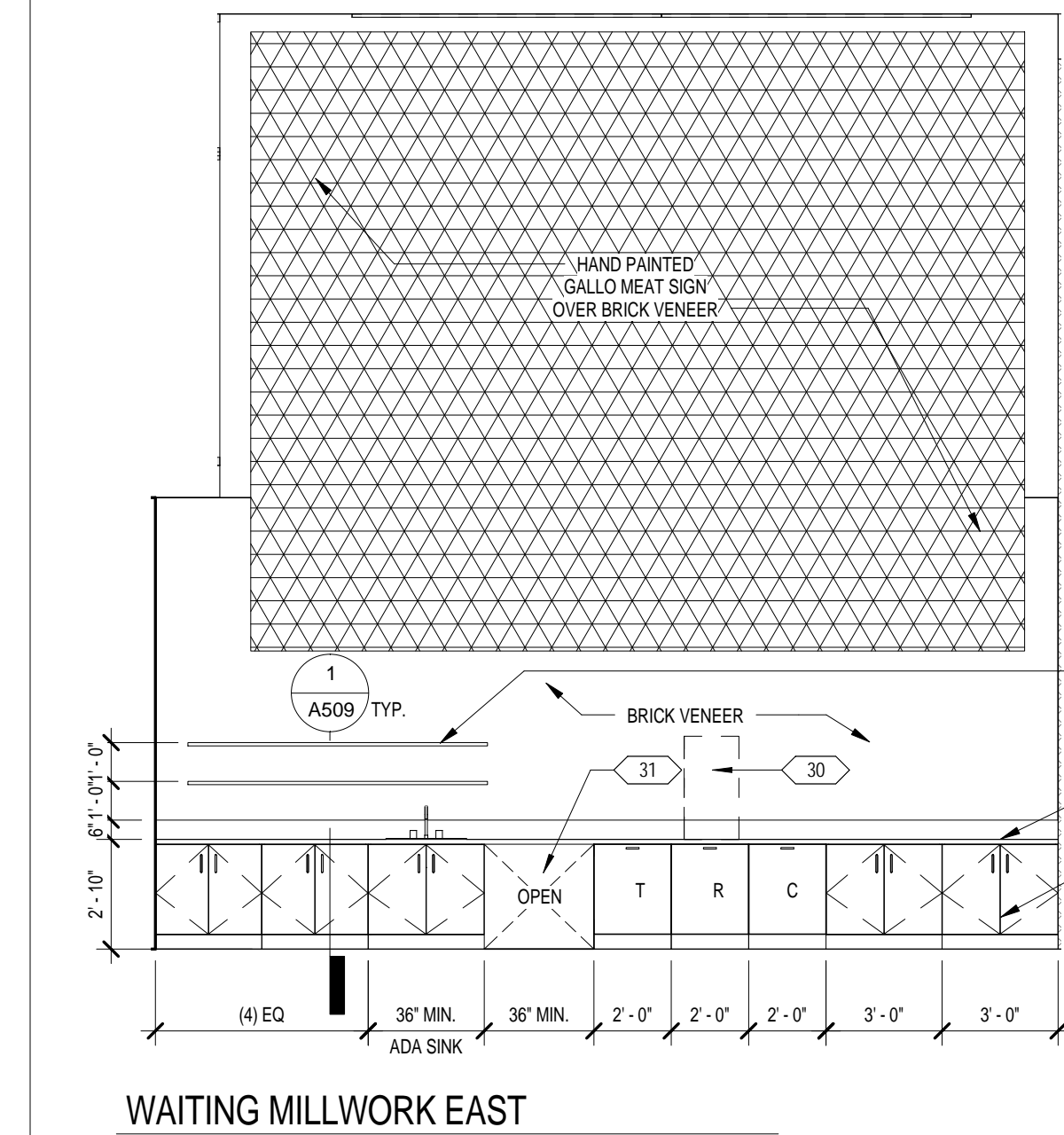


417 Montgomery Street, 7th Floor  
San Francisco, CA 94104  
415 230 7000  
www.nicholsbooth.com

Revision Issue Information

No.	Description	Date
1	SCHEMATIC PRICING SET (02.01.15)	01.19.15
2	DD PROGRESS	01.30.15
3	100% DD SET	02.13.15
4	90% CD LL REVIEW / BID SET	04.01.15



Item	Model Number	Description	Furnished By
01	CF85-A20-15	DRIP COFFEE BREWER	CFCI
02	LI3D15	THERMAL URN	CFCI
03	MG12	GRINDER FOR DRIP BREWERS	CFCI
04	VYV4DL	SINGLE MANUAL ESPRESSO	CFCI
05	SUPER JOLLY	COFFEE GRINDER	CFCI
06	IMPRESSA X30 PRO	ESPRESSO MACHINE	CFCI
07	TOP BREWER	UNDERCOUNTER AUTO ESPRESSO	CFCI
08	DC 215	FOUNTAIN SODA	CFCI
09	ICE MAKER	ICE MAKER	CFCI
10	CRV3AL1	CR VENT	CFCI
11	CRV3AL2	CR VENT	CFCI
12	CRV3AL3	CR VENT	CFCI
13	M6040	MICROWAVE	CFCI
14	BREVILLE	POPOUP TOASTER	CFCI
15	BREVILLE	TOASTER OVEN	CFCI
16	GENERIC	SNACK VENDING FIXTURE	CFCI
17	GENERIC	FOR DIRTY DISHES	CFCI
18	GENERIC	BEER	CFCI
19	GENERIC	SOFT DRINKS	CFCI
20	GENERIC	MILK ETC	CFCI
21	ADA COMPLIANT	UNDERCOUNTER	CFCI
22	1000-UP	LOW TEMPERATURE HOT HOLDING CABINET	CFCI
23	SPEC-LINE	10" BACKSPLASH, OPEN BASE STYLE, 30" X 72"	CFCI
24	CF3	2" OVENS STACKED	CFCI
25	SPEC-LINE	10" BACKSPLASH, OPEN BASE STYLE	CFCI
26	CF3	3-PHASE 208-240V MODEL	CFCI
27	CF3	CRASH LOBBY ESPRESSO	CFCI
28	CF3	2-DOOR UNDERCOUNTER UNIT	CFCI
29	CF3	ADA COMPLIANT GLASS DOOR REFRIGERATOR	CFCI

**KEYNOTES**

EN01 PROVIDE ALTERNATE PRICING FOR TOP BREWER PRO UNDERCOUNTER AUTO ESPRESSO MACHINE

EN02 PROVIDE IMPRESSA X30 PRO AUTO ESPRESSO MACHINE AT FLOORS 03 AND 04 IN LIEU OF MANUAL ESPRESSO AND ESPRESSO GRINDER

EN03 PROVIDE 4" X 6" INCH BOX CUTOUT IN COUNTERTOP DIRECTLY ABOVE COMPOST BIN AT FLOORS 2 & 4.

EN04 PROVIDE FLOOR DRAIN AT SODA MACHINE LOCATIONS

EN05 VERTICAL 1/2" HIGH DECORATIVE VERTICAL WOOD SLATS MOUNTED ON 1/2" SQUARE TUBE STEEL FRAME. SLAB TO SLAB SUPPORTS

EN06 BREAK ROOM ISLAND WITH SOLID SURFACE COUNTERTOP. BASE TO BE A COMBINATION OF PLAM OPEN SHELF CABINETRY AND OPEN BAR SEATING WITH 1/2" SQUARE TUBE STEEL SUPPORTS

EN07 BREAK ROOM ISLAND WITH SOLID SURFACE COUNTERTOP AND PLAM BASE CABINETS. PROVIDE PING TRUSSES FOR BUILT-IN REFRIGERATION FOR BEVERAGE DISPENSERS AND RECESSED DRIP TRAYS.

Architect/Engineer Of Record:

Consultant:

Facility:

**SPLUNK**

Project:

**Splunk SF**  
270 Brannan Street, San Francisco, CA 94107

Sheet Title:

**ENLARGED PLANS & ELEVATIONS**

Project North: True North

Scale: 1/4" = 1'-0"

Issue Date: \_\_\_\_\_

Phase: **Construction Documents**

Sheet no: **A402**