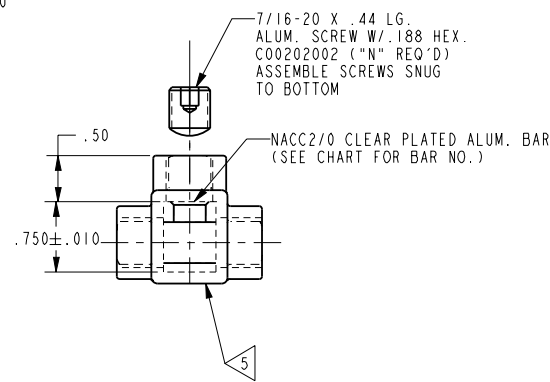
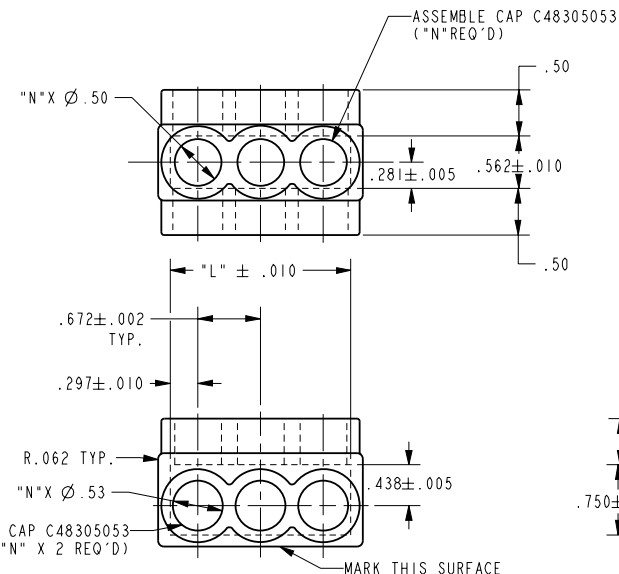
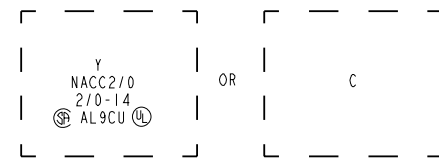


BURNDY CAT. NO.	VENDOR CAT. NO.	L	N
BIBD2/0-2	NACC2/0-2B	1.266	2
BIBD2/0-3	NACC2/0-3B	1.938	3
BIBD2/0-4	NACC2/0-4B	2.610	4
BIBD2/0-5	NACC2/0-5B	3.282	5
BIBD2/0-6	NACC2/0-6B	3.954	6
BIBD2/0-8	NACC2/0-8B	5.298	8
BIBD2/0-10	NACC2/0-10B	6.642	10
BIBD2/0-12	NACC2/0-12B	7.986	12
BIBD2/0-14	NACC2/0-14B	9.330	14

REV	DATE	DESCRIPTION	ECO	BY	C'H'K.
G	08/05/2013 13:28:00 PM	LOG UPDATE	32749	YM	MB

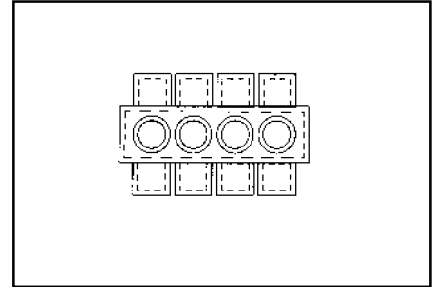
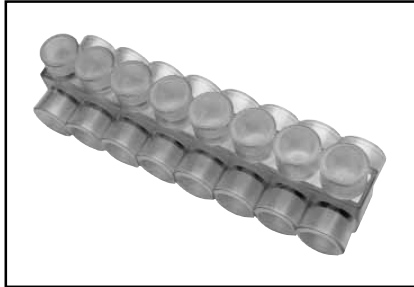
BAR MARKING



- NOTES:
- THIS DRAWING TO BE INTERPRETED PER ASME Y14.5M-1994.
 - BREAK ALL SHARP EDGES UNLESS OTHERWISE SPECIFIED.
 - THIS PRINT FOR PURCHASE OF BURNDY® PRODUCT CAT. NO.'S ONLY. NOT FOR IN HOUSE MANUFACTURE.
 - COLUMN TITLED 'VENDOR CATALOG NO.' IS VENDORS' END-ITEM, EQUIVALENT TO BURNDY® PRODUCT CAT. NO. EXCEPT FOR PRODUCT PACKAGING AND MARKING.
 - PARTS TO BE INDIVIDUALLY LABELED WITH: BURNDY® CATALOG NUMBER; AND BAR CODED PER INTERNAL SPEC. PK2030. USE BURNDY® PRODUCT CAT. NO. ON LABEL. LABEL TO BE PLACED APPROXIMATELY AS SHOWN. CARTONS TO BE LABELED WITH BURNDY "LABELSMALL" PER PE209759 AND PC209670. DATE AND LOCATION. THIS IS TO BE DONE BY VENDOR OR INTERNALLY WHILE APPROVED AS AN ALTERNATE MANUFACTURING LOCATION.
 - ADD 'L BURNDY® PRODUCT CAT. NO. ITEMS MAY BE ADDED IN THE FUTURE BASED ON FUTURE REQUIREMENTS.
 - THE DIMENSIONS SHOWN ARE BASED ON VENDORS' MANUFACTURED PRODUCT. CHANGES TO THESE DIMENSIONS THAT ALTER FORM, FIT, OR FUNCTION MUST BE AGREED TO BY VENDOR AND BURNDY®.
 - INSULATION MATERIAL:
A) FOR PLASTISOL DBX4006CL OR DBI587A-78 TO 80 DUROMETER REQUIREMENT.
B) FOR INJECTION MOLDED PARTS-NO DUROMETER REQUIREMENT.
 - # SYMBOL EQUALS CHECK DIGIT, RESULTANT FROM UPC-A LABELING PROCESS.

GENERAL NOTES:		FULLY-INSULATED DISTRIBUTION BLOCKS - UNITAP™	
1. ALTHOUGH THIS DRAWING MAY ORIGINALLY HAVE BEEN DEVELOPED TO SCALE, THE USE OF ELECTRONIC DESIGN AND REPRODUCTION TECHNIQUES MAY RESULT IN THIS COPY NOT BEING TO SCALE. THEREFORE, DO NOT SCALE THIS PRINT.		ITEM NO: N/A	
2. THE DIMENSIONS, TOLERANCES AND SPECIFICATIONS OF THIS DESIGN ARE GIVEN TO PROVIDE A DEFINITION OF THE FUNCTIONAL REQUIREMENTS FOR THIS COMPONENT OR PRODUCT. ANY PART NOT MEETING THESE REQUIREMENTS SHALL BE CONSIDERED AS SCRAP.		CAT. NO: BI-SERIES	
DRAWN BY: J AYER 1/3/97		MKT APPVL: N/A	
CHECKER: C CHADBOURNE 1/9/97		SCALE: 2:1	
DSN APPVL: C CHADBOURNE 1/9/97		PROD FAM: --	
MFG APPVL: R PHELPS 1/22/97		PROJECT #: D.O.53746	
QA APPVL: D VARIO 1/22/97		SIZE	
THIS DRAWING AND/OR SPECIFICATION IS THE PROPERTY OF BURNDY, MANCHESTER NH 03109 USA. IT IS ISSUED IN STRICT CONFIDENCE AND SHALL NOT BE REPRODUCED, COPIED, OR DISCLOSED TO OTHERS, OR USED AS THE BASIS FOR THE MANUFACTURE OR SALES OF APPARATUS WITHOUT THE PERMISSION OF THE OWNER.		DOCUMENT TYPE: Production	
REL LEVEL: Released		DRAWING NO: PC210760	
		SHEET 14 OF 19	
		REV: G	

BURNDY® UNITAP™


MULTI-PORT
Double-Sided Entry


Catalog Number	# of Ports	Wire Range (AWG/kcmil)	L	W	H	Hex Key
BIBD4-2	2	#14 - #4	1.16	1.50	1.25	1/8
BIBD4-3	3	#14 - #4	1.59	1.50	1.25	1/8
BIBD4-4	4	#14 - #4	2.03	1.50	1.25	1/8
BIBD4-5	5	#14 - #4	2.47	1.50	1.25	1/8
BIBD4-6	6	#14 - #4	2.91	1.50	1.25	1/8
BIBD4-8	8	#14 - #4	3.78	1.50	1.25	1/8
BIBD2/0-2	2	#14 - 2/0	1.52	1.56	1.25	3/16
BIBD2/0-3	3	#14 - 2/0	2.19	1.56	1.25	3/16
BIBD2/0-4	4	#14 - 2/0	2.86	1.56	1.25	3/16
BIBD2/0-5	5	#14 - 2/0	3.53	1.56	1.25	3/16
BIBD2/0-6	6	#14 - 2/0	4.20	1.56	1.25	3/16
BIBD2/0-8	8	#14 - 2/0	5.55	1.56	1.25	3/16
BIBD2/0-10	10	#14 - 2/0	6.89	1.56	1.25	3/16
BIBD2/0-12	12	#14 - 2/0	8.24	1.56	1.25	3/16
BIBD2/0-14	14	#14 - 2/0	9.58	1.56	1.25	3/16
BIBD250-2	2	#10 - 250	2.03	2.64	2.13	5/16
BIBD250-3	3	#10 - 250	2.97	2.64	2.13	5/16
BIBD250-4	4	#10 - 250	3.91	2.64	2.13	5/16
BIBD250-5	5	#10 - 250	4.84	2.64	2.13	5/16
BIBD250-6	6	#10 - 250	5.78	2.64	2.13	5/16
BIBD250-8	8	#10 - 250	7.66	2.64	2.13	5/16
BIBD250-10	10	#10 - 250	9.53	2.64	2.13	5/16
BIBD250-12	12	#10 - 250	11.41	2.64	2.13	5/16
BIBD250-14	14	#10 - 250	13.29	2.64	2.13	5/16
BIBD350-2	2	#10 - 350	2.22	3.00	2.50	5/16

Catalog Number	# of Ports	Wire Range (AWG/kcmil)	L	W	H	Hex Key
BIBD350-3	3	#10 - 350	3.13	3.00	2.50	5/16
BIBD350-4	4	#10 - 350	4.04	3.00	2.50	5/16
BIBD350-5	5	#10 - 350	4.95	3.00	2.50	5/16
BIBD350-6	6	#10 - 350	5.86	3.00	2.50	5/16
BIBD350-8	8	#10 - 350	7.68	3.00	2.50	5/16
BIBD350-10	10	#10 - 350	9.50	3.00	2.50	5/16
BIBD350-12	12	#10 - 350	11.32	3.00	2.50	5/16
BIBD350-14	14	#10 - 350	13.14	3.00	2.50	5/16
BIBD600-2	2	#4 - 600	2.56	3.00	2.75	3/8
BIBD600-3	3	#4 - 600	3.77	3.00	2.75	3/8
BIBD600-4	4	#4 - 600	4.97	3.00	2.75	3/8
BIBD600-5	5	#4 - 600	6.17	3.00	2.75	3/8
BIBD600-6	6	#4 - 600	7.37	3.00	2.75	3/8
BIBD600-8	8	#4 - 600	9.78	3.00	2.75	3/8
BIBD600-10	10	#4 - 600	12.97	3.00	2.75	3/8
BIBD600-12	12	#4 - 600	15.53	3.00	2.75	3/8
BIBD600-14	14	#4 - 600	18.09	3.00	2.75	3/8
BIBD750-2*	2	#2 - 750	2.87	3.38	3.00	3/8
BIBD750-3*	3	#2 - 750	4.25	3.38	3.00	3/8
BIBD750-4*	4	#2 - 750	5.63	3.38	3.00	3/8
BIBD750-6*	6	#2 - 750	8.37	3.38	3.00	3/8
BIBD750-8*	8	#2 - 750	11.13	3.38	3.00	3/8
BIBD750-10*	10	#2 - 750	13.87	3.38	3.00	3/8
BIBD750-12*	12	#2 - 750	16.63	3.38	3.00	3/8
BIBD750-14*	14	#2 - 750	19.37	3.38	3.00	3/8

NOTE: Only 1 conductor per port allowed.

* Not UL Listed.

UNITAP™ rated for code conductor only.

Blue highlighted items are industry standard and most frequently ordered.