

DRAWING NO.
FD016340-01

BURNDY CONFIDENTIAL

BURNDY CONFIDENTIAL

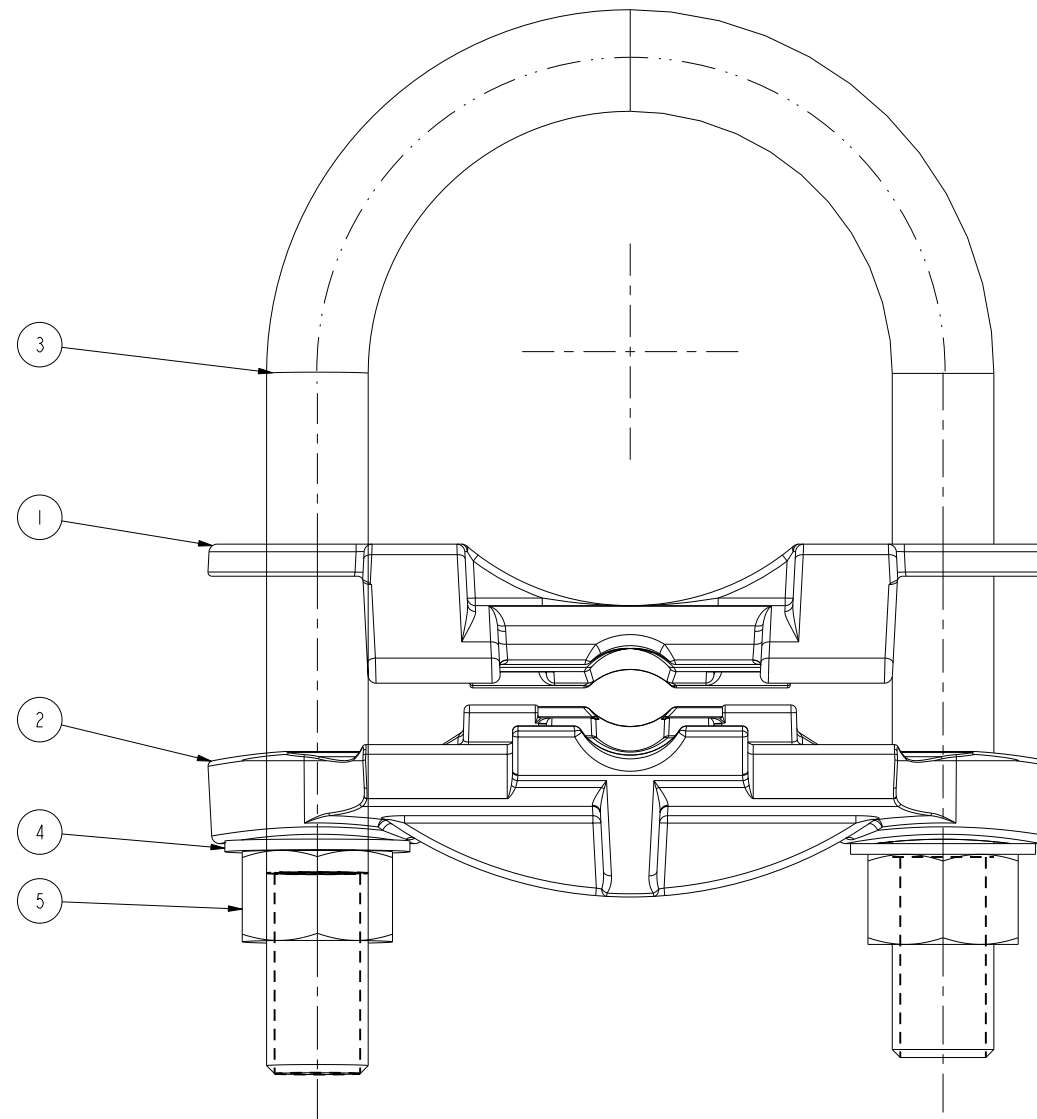
REV	DATE	DESCRIPTION	ECO	BY	C'H'K.
B	01/23/2013 12:03:00 PM	CAT: GARI726TNP	30052	DD	AT

*** BILL OF MATERIAL (GARI726) ***

PT NO.	ITEM NUMBER	CATALOG NO.	QTY	DESCRIPTION	REFERENCE
1	S01832	GARI726P1	1	CAST ALLOY BODY	10054209 (SHT 1)
2	S01833	GARI726P2	1	CAST ALLOY CAP	10054209 (SHT 2)
3	10052730	UB268	1	#268 DURIUM "U" BOLT	PC65694-03
4	060406	38NW	2	3/8 LOCK WASHER, INT TOOTH, SILICON BRZ	DA7143-01
5	058150	38CHEN	2	HEX NUT, 3/8-16 SILICON BRONZE	DA39037
6	26414J	GARTAG FORM #7917	1	GROUND CONNECTOR TAG	PA91288

*** BILL OF MATERIAL (GARI726TN) ***

PT NO.	ITEM NUMBER	CATALOG NO.	QTY	DESCRIPTION	REFERENCE
1	50018134	GARI726TNP1	1	CAST ALLOY BODY	10054209 (SHT 1)
2	50018135	GARI726TNP2	1	CAST ALLOY CAP	10054209 (SHT 2)
3	10052730	UB268	1	#268 DURIUM "U" BOLT	PC65694-03
4	060406	38NW	2	3/8 LOCK WASHER, INT TOOTH, SILICON BRZ	DA7143-01
5	058150	38CHEN	2	HEX NUT, 3/8-16 SILICON BRONZE	DA39037



NOTES:

1. ASSEMBLE COMPONENTS AS SHOWN.
2. CAST COMPONENTS ON ITEM # 25021257 (GARI726TN) TO BE TIN PLATED.

GENERAL NOTES:		GROUND CLAMP	
1. ALTHOUGH THIS DRAWING MAY ORIGINALLY HAVE BEEN DEVELOPED TO SCALE, THE USE OF ELECTRONIC DESIGN AND REPRODUCTION TECHNIQUES MAY RESULT IN THIS COPY NOT BEING TO SCALE. THEREFORE, DO NOT SCALE THIS PRINT.		ITEM NO: 260420, 25021257	SCALE: 4:1
2. THE DIMENSIONS, TOLERANCES AND SPECIFICATIONS OF THIS DESIGN ARE GIVEN TO PROVIDE A DEFINITION OF THE FUNCTIONAL REQUIREMENTS FOR THIS COMPONENT OR PRODUCT. ANY PART NOT MEETING THESE REQUIREMENTS SHALL BE CONSIDERED AS SCRAP.		CAT. NO: GARI726, GARI726TN	REV: B
		DRAWN BY: R. SUDHAKAR 03/16/2005	
		CHECKER: B. MICHAUD 04/11/2005	
		DSN APPVL: B. MICHAUD 05/12/2005	
		MFG APPVL: P. DOERING 06/10/2005	
		QA APPVL: C. ACKERMAN 05/19/2005	
		MKT APPVL: --	
THIS DRAWING AND/OR SPECIFICATION IS THE PROPERTY OF BURNDY, MANCHESTER NH 03109 USA. IT IS ISSUED IN STRICT CONFIDENCE AND SHALL NOT BE REPRODUCED, OR COPIED, OR DISCLOSED TO OTHERS, OR USED AS THE BASIS FOR THE MANUFACTURE OR SALES OF APPARATUS WITHOUT THE PERMISSION OF THE OWNER.		PROD FAM: Grounding	DRAWING NO: FD016340-01
		PROJECT #: --	SHEET 1 OF 1
		DOCUMENT TYPE: Production	
		REL LEVEL: Released	

REV: PE0200

8

7

6

5

4

3

2

1

D

C

B

A

D

C

B

A

Grounding

Mechanical

BURNDY®

New!
Rebar to Wire
UL Listed and
CSA Certified
for Direct Burial

TYPE GAR

- Wire to Rebar
- Fence Post Grounding Connector
- Wire to Pipe

E-28

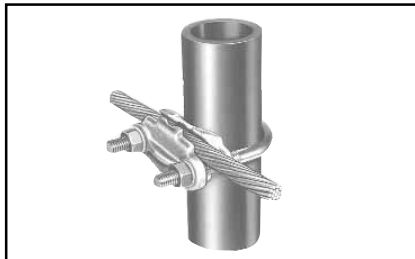
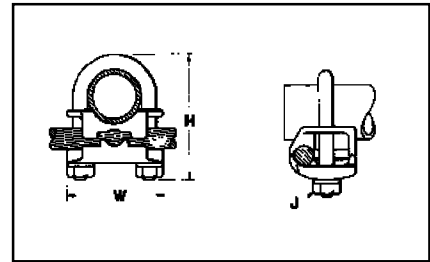
For Parallel or 90° Copper Cable Connection to Rod or Pipe with the Same Connector

High copper alloy ground connector for joining a range of cable, parallel or at right angles to rod or tube. Especially good for fence posts. High copper alloy cast body with DURIMUM™ U-bolts, nuts and lockwashers, permit entire connection to be buried in ground or concrete without danger of corrosion.

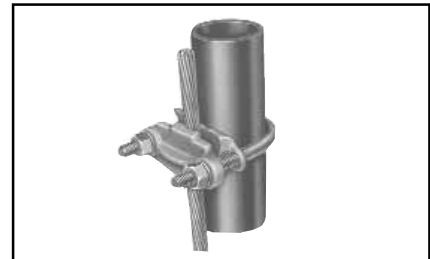
- One-wrench installation.
- UL467 Listed.
- Acceptable for direct burial.



Wire to Rebar



Wire at Right Angle to Pipe



Wire Parallel to Pipe



Catalog Number	Conductor			Cable	H	J	W
	Tube I.P.S.	Rod Size or O.D. Range	Rebar Size				
GAR114C	1/4	1/2	—	8 Sol. - 4 Str.	2-1/2	3/8	1-7/8
GAR1126				4 Sol. - 2/0 Str.			
GAR1129				2/0 Sol. - 250			
GAR644C	3/8	5/8 - 3/4	#5 (5/8") - #6 (3/4")	8 Sol. - 4 Str.	2-7/8	1/2	2-1/8
GAR6426				4 Sol. - 2/0 Str.			
GAR6429				2/0 Sol. - 250			
GAR6434	1/2 - 3/4	7/8 - 1	#7 (7/8") - #8 (1")	300 - 500	3	3/8	2-3/8
GAR144C				8 Sol. - 4 Str.			
GAR1426				4 Sol. - 2/0 Str.			
GAR1429	1	1-1/8 - 1-1/4	#9 (1-1/8") - #10 (1-1/4")	2/0 Sol. - 250	2-7/8	3/8	2-5/8
GAR1434				300 - 500			
GAR154C				8 Sol. - 4 Str.			
GAR1526	1-1/4	1-3/8 - 1-1/2	#11 (1-3/8")	4 Sol. - 2/0 Str.	3-1/2	3/8	3
GAR1529				2/0 Sol. - 250			
GAR1534				300 - 500			
GAR164C	1-1/2	1-5/8 - 1-7/8	—	8 Sol. - 4 Str.	4	3/8	3-1/4
GAR1626				4 Sol. - 2/0 Str.			
GAR1629				2/0 Sol. - 250			
GAR1634	2	2 - 2-3/8	—	300 - 500	4-5/8	1/2	2-5/8
GAR174C				8 Sol. - 4 Str.			
GAR1726				4 Sol. - 2/0 Str.			
GAR1729	2-1/2	2-1/2 - 2-7/8	—	2/0 Sol. - 250	4-1/4	3/8	3-3/4
GAR1734				300 - 500			
GAR184C				8 Sol. - 4 Str.			
GAR1826	1-1/4	1-3/8 - 1-1/2	#11 (1-3/8")	4 Sol. - 2/0 Str.	3-1/2	3/8	3
GAR1829				2/0 Sol. - 250			
GAR1834				300 - 500			
GAR194C	1-1/2	1-5/8 - 1-7/8	—	8 Sol. - 4 Str.	4	3/8	3-1/4
GAR1926				4 Sol. - 2/0 Str.			
GAR1929				2/0 Sol. - 250			
GAR1934	2	2 - 2-3/8	—	300 - 500	4-1/2	1/2	4-1/8
GAR194C				8 Sol. - 4 Str.			
GAR1926				4 Sol. - 2/0 Str.			
GAR1929	2-1/2	2-1/2 - 2-7/8	—	2/0 Sol. - 250	5	3/8	4-1/4
GAR194C				8 Sol. - 4 Str.			
GAR1926				4 Sol. - 2/0 Str.			
GAR1929	1-1/4	1-3/8 - 1-1/2	#11 (1-3/8")	2/0 Sol. - 250	3-1/2	3/8	3
GAR174C				8 Sol. - 4 Str.			
GAR1726				4 Sol. - 2/0 Str.			
GAR1729	1-1/2	1-5/8 - 1-7/8	—	2/0 Sol. - 250	4	3/8	3-1/4
GAR1734				300 - 500			
GAR184C				8 Sol. - 4 Str.			
GAR1826	2	2 - 2-3/8	—	4 Sol. - 2/0 Str.	4-1/4	3/8	3-3/4
GAR1829				2/0 Sol. - 250			
GAR1834				300 - 500			
GAR194C	1-1/2	1-5/8 - 1-7/8	—	8 Sol. - 4 Str.	4	3/8	3-1/4
GAR1926				4 Sol. - 2/0 Str.			
GAR1929				2/0 Sol. - 250			
GAR1934	2-1/2	2-1/2 - 2-7/8	—	300 - 500	5-5/8	1/2	4-5/8
GAR194C				8 Sol. - 4 Str.			
GAR1926				4 Sol. - 2/0 Str.			

Blue highlighted items are industry standard and most frequently ordered.