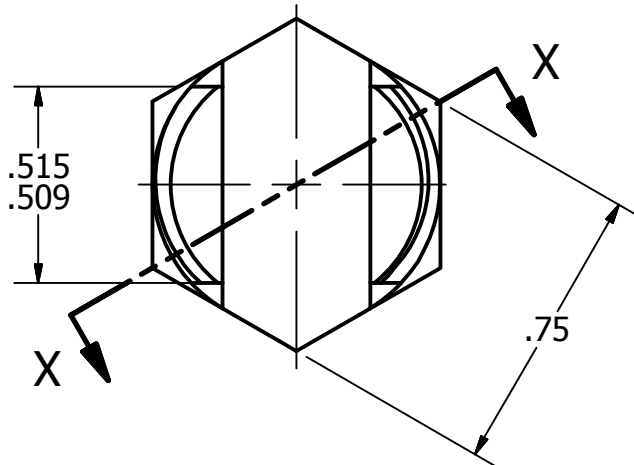
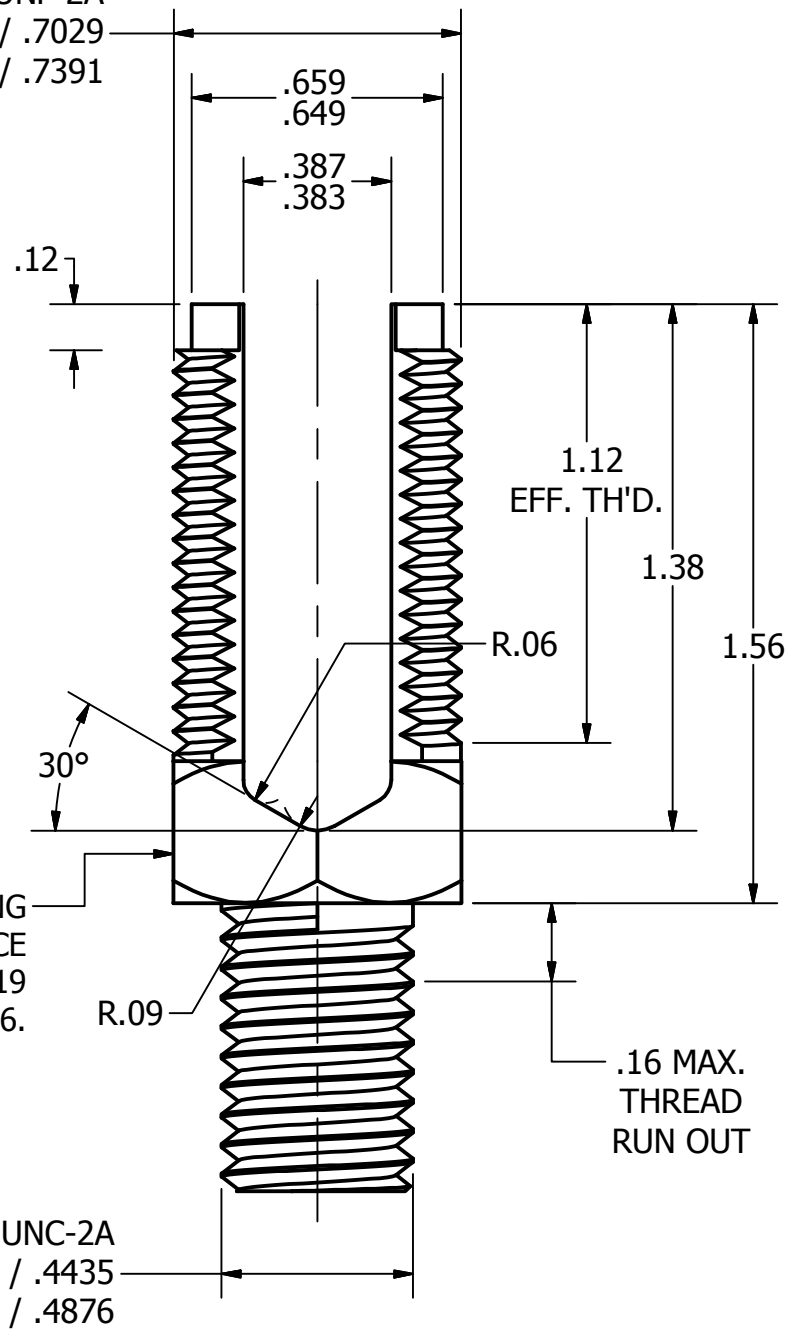


*** BILL OF MATERIAL ***									
PT. NO.	CATALOG NUMBER	QTY.	DESCRIPTION	REFERENCE					
1	K2C25-P1 & K2C25B1-P1	1	SERVIT® POST MALE	AS SHOWN					
2	KJ25WF	1	NUT & PRESSURE BAR SUB-ASS'Y	FC78316	PREFERRED DESIGN				
	KJ25-F			FA41855	ALTERNATE DESIGN				

CATALOG NO.	L
K2C25	2.31
K2C25B1	2.81

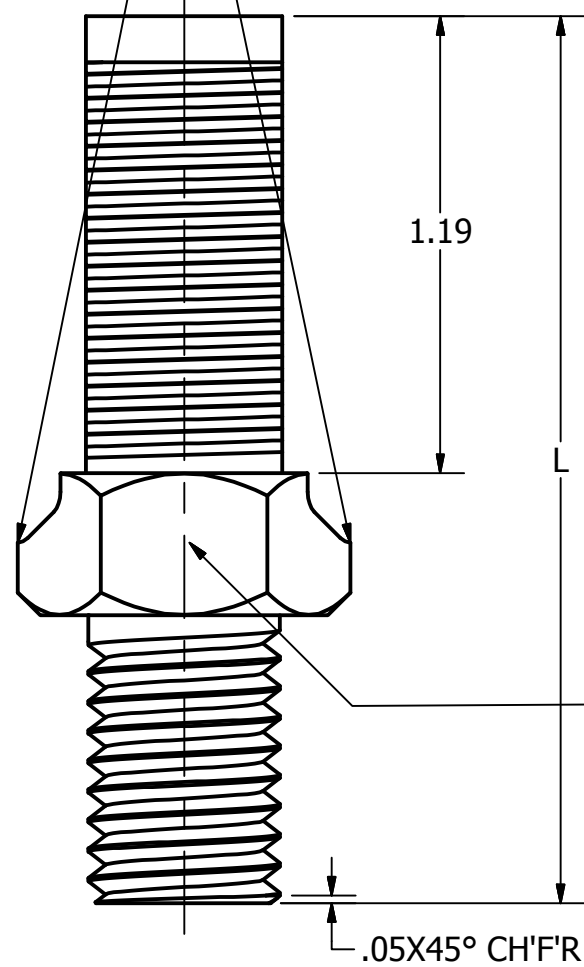


3/4-16 UNF-2A
PITCH Ø .7079 / .7029
MAJOR Ø .7485 / .7391

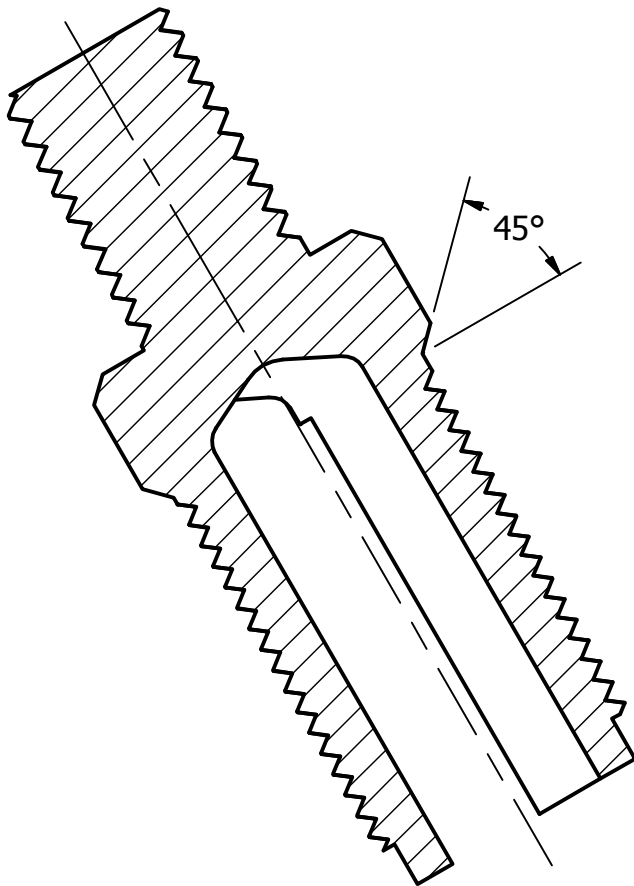


STAMP UL LISTING
MARK ON THIS SURFACE
PER BURNDY SPEC. L4219
SIZE 16.

BREAK THESE CORNERS



STAMP BURNDY SYMBOL
PER BURNDY SPEC. L4116
TYPE 1, SIZE 16.



SECTION X-X


ACCOMMODATES:
1/0 STR (.373 DIA.) MAX. CABLES

REFERENCE : SD55917, FC20532.

SUPERSEDES TYPE NO.25 PC-3412-21.

NOTES:

- THIS DRAWING TO BE INTERPRETED PER ASME Y14.5M-1994.
- BREAK ALL SHARP EDGES UNLESS OTHERWISE SPECIFIED.

GENERAL NOTES: 1. ALTHOUGH THIS DRAWING MAY ORIGINALLY HAVE BEEN DEVELOPED TO SCALE, THE USE OF ELECTRONIC DESIGN AND REPRODUCTION TECHNIQUES MAY RESULT IN THIS COPY NOT BEING TO SCALE. THEREFORE, DO NOT SCALE THIS PRINT. 2. THE DIMENSIONS, TOLERANCES AND SPECIFICATIONS OF THIS DESIGN ARE GIVEN TO PROVIDE A DEFINITION OF THE FUNCTIONAL REQUIREMENTS FOR THIS COMPONENT OR PRODUCT. ANY PART NOT MEETING THESE REQUIREMENTS SHALL BE CONSIDERED AS SCRAP.	LINEAR MEASURE: $\frac{IN}{(mm)}$, IN [mm]			-MATERIAL-		SERVIT® POST, MALE															
	THIRD ANGLE PROJECTION																				
				COMP	A.S.T.M. B140 TYPE B LEADED COMMERCIAL BRONZE	ITEM NO: 276235 & 276250															
	<div>-TOLERANCE- (UNLESS OTHERWISE SPECIFIED)</div> <table><tr><td>NO. OF DECIMAL PLACES</td><td>mm</td><td>IN</td></tr><tr><td>ONE PLACE</td><td>±.5</td><td>-----</td></tr><tr><td>TWO PLACES</td><td>±.13</td><td>±.02</td></tr><tr><td>THREE PLACES</td><td>-----</td><td>±.005</td></tr></table> <div>ANGLES ±0° 30'</div>			NO. OF DECIMAL PLACES	mm	IN	ONE PLACE	±.5	-----	TWO PLACES	±.13	±.02	THREE PLACES	-----	±.005	INIT HARD:	HALF HARD	CAT. NO: K2C25 & K2C25B1			
				NO. OF DECIMAL PLACES	mm	IN															
				ONE PLACE	±.5	-----															
				TWO PLACES	±.13	±.02															
	THREE PLACES	-----	±.005																		
	FIN HARD:	HALF HARD	DRAWN BY: AKK 02/14/1949																		
		FINISH:	--	CHECKER: RRG 03/31/1949																	
SIZE, FORM & TOL.			.750 HEX. ROD	DSN APRVL: --																	
	MFG APRVL: --																				
	QA APRVL: --																				
<div>THIS DRAWING AND/OR SPECIFICATION IS THE PROPERTY OF BURNDY, MANCHESTER NH 03109 USA. IT IS ISSUED IN STRICT CONFIDENCE AND SHALL NOT BE REPRODUCED, OR COPIED, OR DISCLOSED TO OTHERS, OR USED AS THE BASIS FOR THE MANUFACTURE OR SALE OF APPARATUS WITHOUT THE PERMISSION OF THE OWNER.</div>			MKT APRVL: --																		
			PROD FAM: --																		
			PROJECT #: --		SIZE	DRAWING NO	REV														
			DOCUMENT TYPE: PRODUCTION		C	FC020093-01	A														
			REL LEVEL: Released		SHEET 1 OF 1																

MECHANICAL GROUNDING CONNECTORS

More than 60 years of technological innovation has made BURNDY® mechanical grounding connectors one of the most widely used, highly respected lines in the industry. There is virtually no grounding application problem that this diversified line cannot help solve.

All BURNDY® mechanical grounding connectors have been designed for easy installation and for outstanding durability. Only the finest high copper alloys are used in their manufacture, ensuring top performance under the most extreme environmental conditions.

UL467 Listed for direct burial applications in earth or concrete.

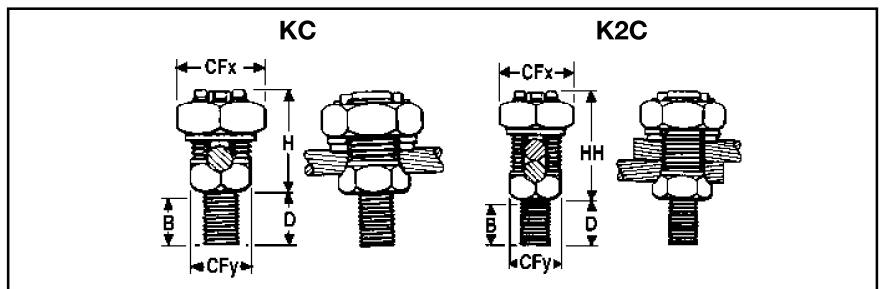
E-25

TYPES KC, K2C

SERVIT POST™

For Copper Cable to Flat

SERVIT POST™ used to ground one or two cables to steel structures, fence posts, transformers. Also used to tap one or two cables from bus bar. One-wrench installation.



Catalog Number		Conductor		Stud Diameter	B	CFx	CFy	D	H	HH
Type KC †	Type K2C ‡	Stranded	Solid							
KC15	K2C15	12 - 9	12 - 8	1/4 - 20	3/8	1/2	3/8	1/2	5/8	7/8
KC15B1	K2C15B1				7/8			1		
KC17	K2C17	10 - 7	10 - 6	1/4 - 20	3/8	5/8	7/16	1/2	7/8	1
KC17B1	K2C17B1				7/8			1		
KC20	K2C20	10 - 5	10 - 4	5/16 - 18	13/32	11/16	1/2	5/8	7/8	1-1/8
KC20B1	K2C20B1				27/32			1		
KC22	K2C22	10 - 3	10 - 2	3/8 - 16	15/32	3/4	5/8	5/8	1	1-1/4
KC22B1	K2C22B1				31/32			1-1/8		
KC23	K2C23	8 - 2	10 - 1	3/8 - 16	15/32	13/16	5/8	5/8	1	1-3/8
KC23B1	K2C23B1				31/32			1-1/8		
KC25	K2C25	2 - 1/0	2 - 2/0	1/2 - 13	9/16	15/16	3/4	3/4	1-1/8	1-5/8
KC25B1	K2C25B1				1-1/16			1-1/4		
KC26	K2C26	2 - 2/0	2 - 3/0	1/2 - 13	17/32	1	7/8	3/4	1-3/8	1-7/8
KC26B1	K2C26B1				1-1/16			1-1/4		
KC28	K2C28	1 - 4/0	1 - 4/0	5/8 - 11	3/4	1-1/2	1-3/16	1	1-3/4	2-1/4
KC28B1	K2C28B1				1-1/4			1-1/2		
KC31	K2C31	1 - 350	—	5/8 - 11	3/4	1-11/16	1-3/8	1	2-1/4	2-7/8
KC31B1	K2C31B1				1-1/4			1-1/2		
KC34	K2C34	3/0 - 500	—	3/4 - 10	1	2	1-5/8	1-1/4	2-3/8	3-1/4
KC34B1	K2C34B1				1-1/2			1-3/4		

† For 1 conductor.

‡ For 1 or 2 conductors.

Add "NSP" suffix to have connector supplied w/split lock-washer and nut.

Blue highlighted items are industry standard and most frequently ordered.