

Question:

What is the best way to branch ductwork vertically and horizontally using SMACNA type 4A and 4B divided flow branches? See image. (This is from SMACNA 2006).

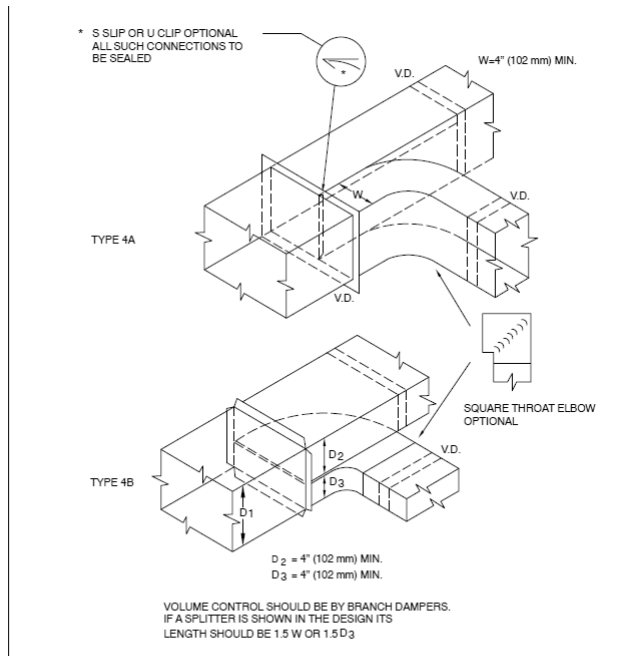


FIGURE 4-5 DIVIDED FLOW BRANCHES

Answer:

Beg/borrow/steal a multi-port fitting with very small length, one connector on one side, and two connectors on the other:

