

MATCHLINE-FOR CONTINUATION SEE DWG. M2.18

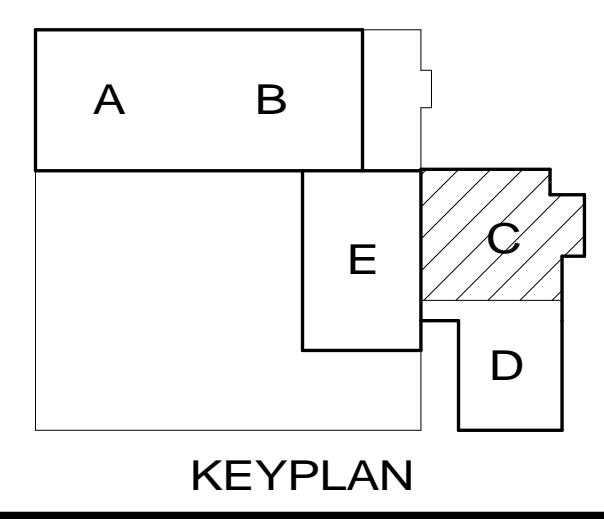
1 PARTIAL WAREHOUSE PLAN-C  
M2.17 SCALE: 1/8" = 1'-0"

**NOTES**

**GENERAL NOTES**

- SMOKE DETECTORS, POWER WIRING TO BE FURNISHED BY DIVISION 15. CONTROL WIRING TO BE FURNISHED BY BAS AND INSTALLED BY DIVISION 15
- DUCTWORK ELEVATIONS ARE SHOWN FOR REFERENCE ONLY. MECHANICAL CONTRACTOR SHALL VERIFY DUCT ROUTING AND COORDINATE WITH OTHER DISCIPLINES FOR INTERFERENCES PRIOR TO FABRICATION AND INSTALLATION.

|     |                            |         |
|-----|----------------------------|---------|
| 1   | RE-ISSUED FOR CONSTRUCTION | 11-2-12 |
| 0   | ISSUED FOR CONSTRUCTION    | 8-16-12 |
| REV | DESCRIPTION                | BY DATE |



**SNC-LAVALIN**  
PROJECT SERVICES, INC.  
436 Greenway Way, Suite 100  
Eaton, PA 15341  
USA  
Telephone: (610) 524-5920  
Facsimile: (610) 524-2443  
www.snc-lavalin.com/us/en

**Jacobswyper**  
ARCHITECTS, LLP  
1232 Chancellor St.  
Philadelphia, PA 19107  
Tel: 215.985.0400  
Fax: 215.985.0409  
www.jacobswyper.com

**WBCM**  
WHITNEY BAILEY COX & MAGNANI, LLC  
848 Fairmount Ave, Suite 100  
Baltimore, MD 21206  
PHONE 410.512.4500 FAX 410.324.4100  
www.wbcm.com

|                           |                   |
|---------------------------|-------------------|
| Prepared by<br>RES        | Checked by<br>HG  |
| Drafted by<br>RES         | Approved by<br>HG |
| Title (M-D-Y)<br>05/22/12 | Page              |
| Scale<br>1/8" = 1'-0"     |                   |

**BD**  
Helping all people live healthy lives

Client

Project  
BECTON DICKINSON DIAGNOSTICS  
39 LOVETON EXPANSION  
39 LOVETON CIRCLE  
SPARKS-GLENCOE, MARYLAND 21152

|  |            |                      |               |
|--|------------|----------------------|---------------|
| Title<br>MECHANICAL WAREHOUSE AREA C FIRST FLOOR PLAN DUCTWORK |            |                      |               |
| Project no.<br>BS12136   | Code<br>DD | Drawing no.<br>M2.17 | Revision<br>1 |

