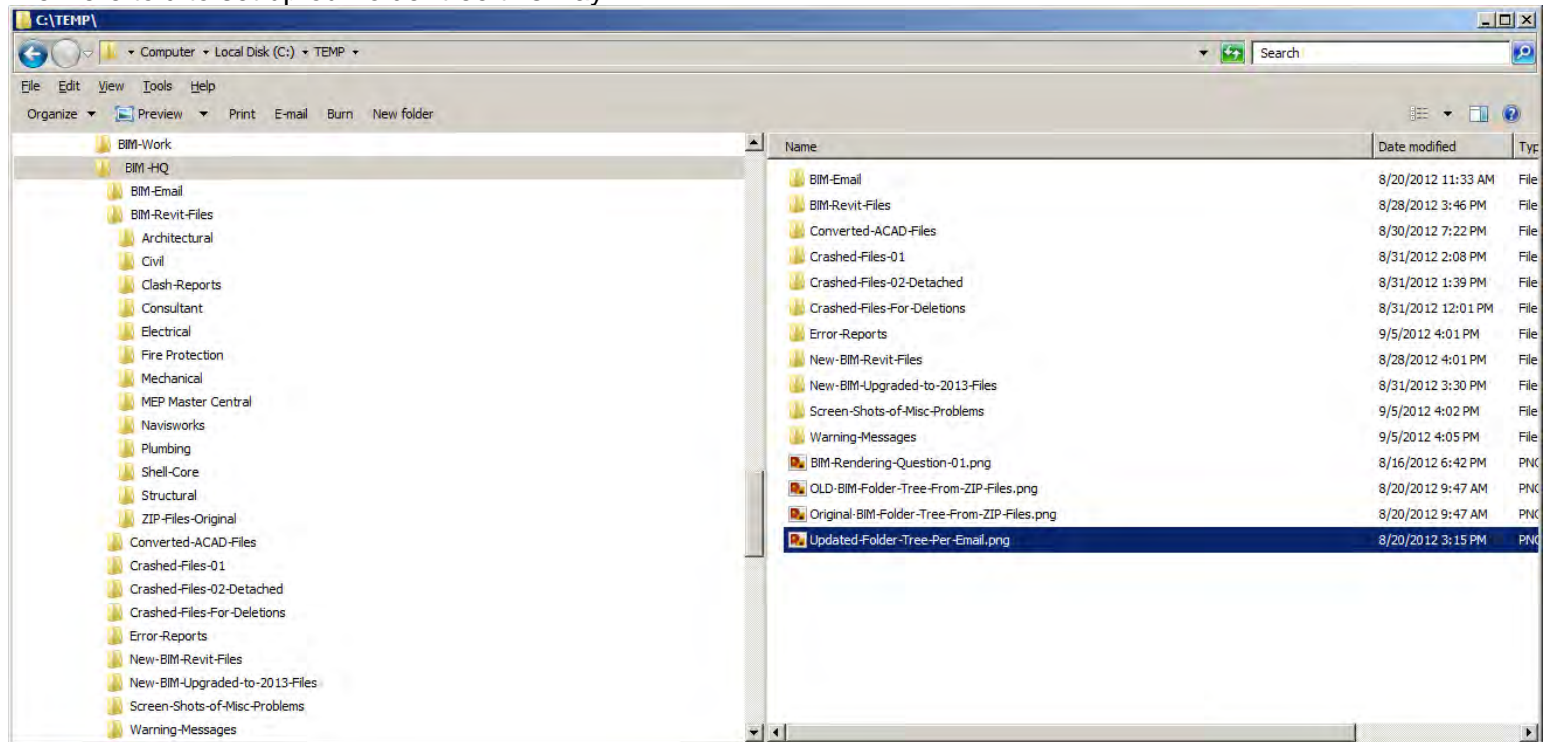


## To All Parties involved with the "Linking Revit Files"

To clarify what seems to be a problem with using, or getting Revit files, are the following screen shots of the process that we have been told to do, or use. If anyone has any questions or if anyone is able to clarify what may be wrong or clarify what may need to be "tweaked" with the following process please let us know.

We were told to set up our folder tree this way:



The only addition to the tree is the "ZIP-Files" folder. Everything else is as we were told to follow.

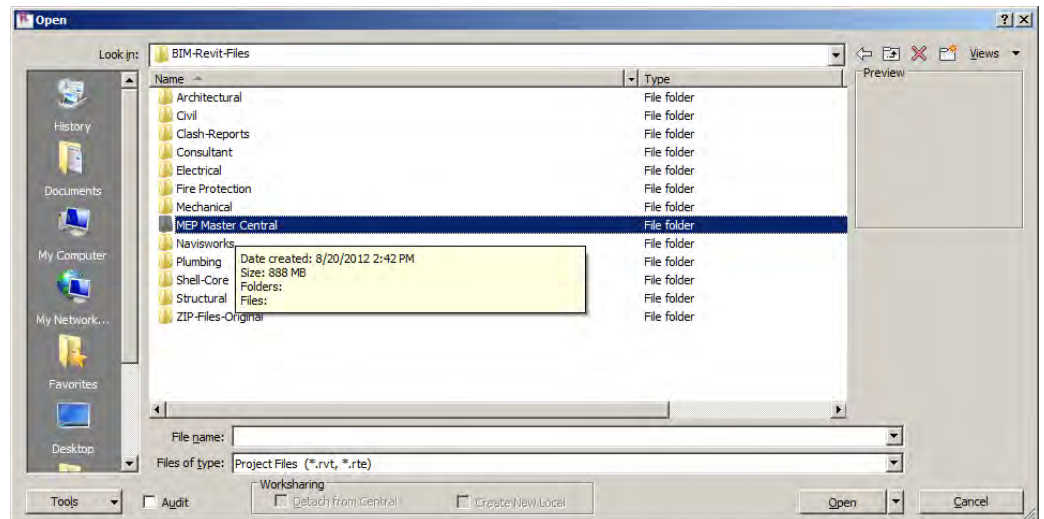
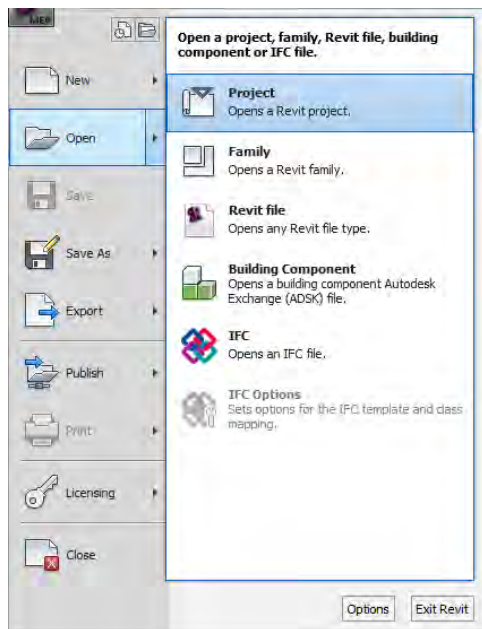
Obviously the next step is to "Select Revit":



Next will be the "Splash, or Opening Screen":

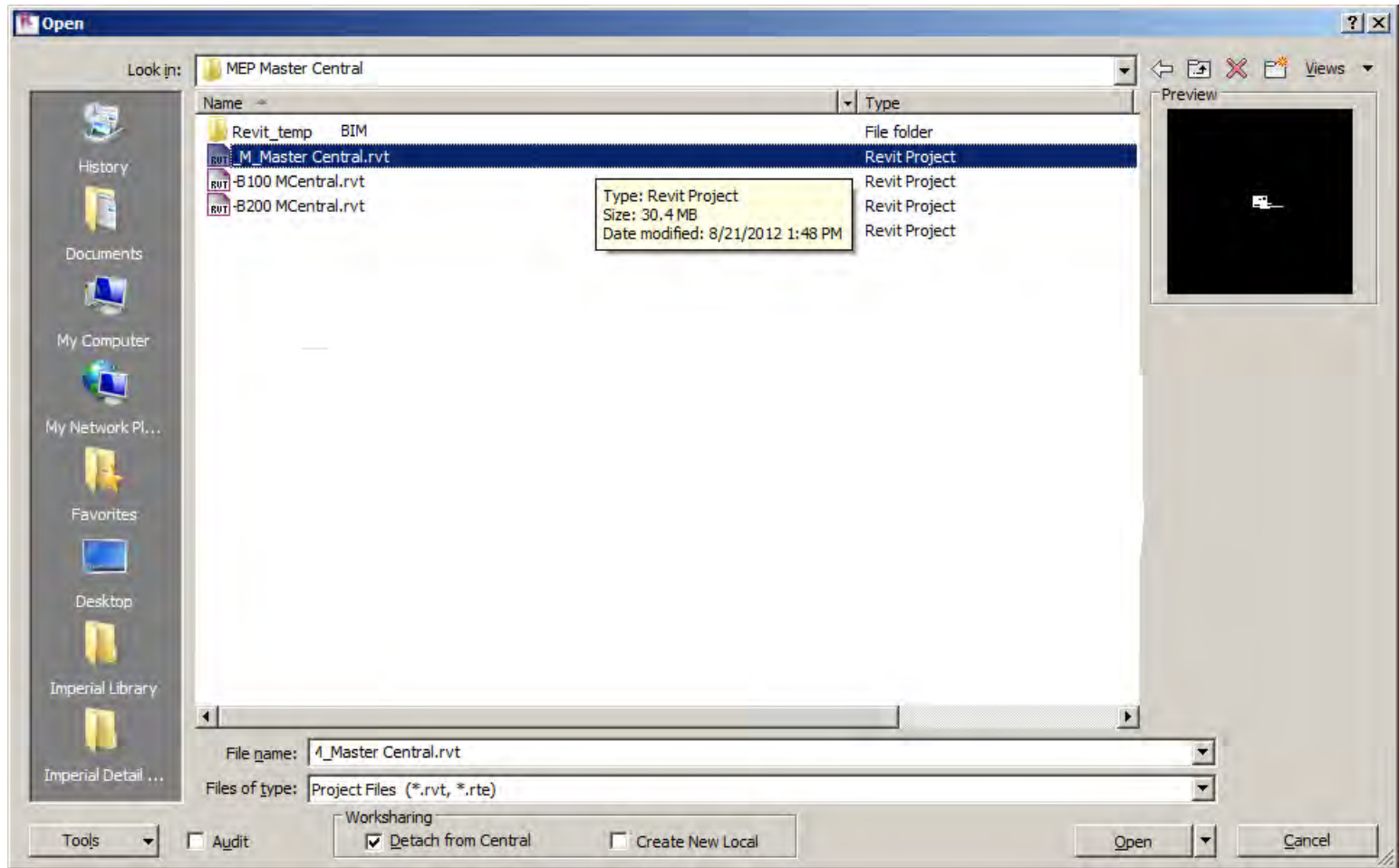


Next we will navigate to the Folder:

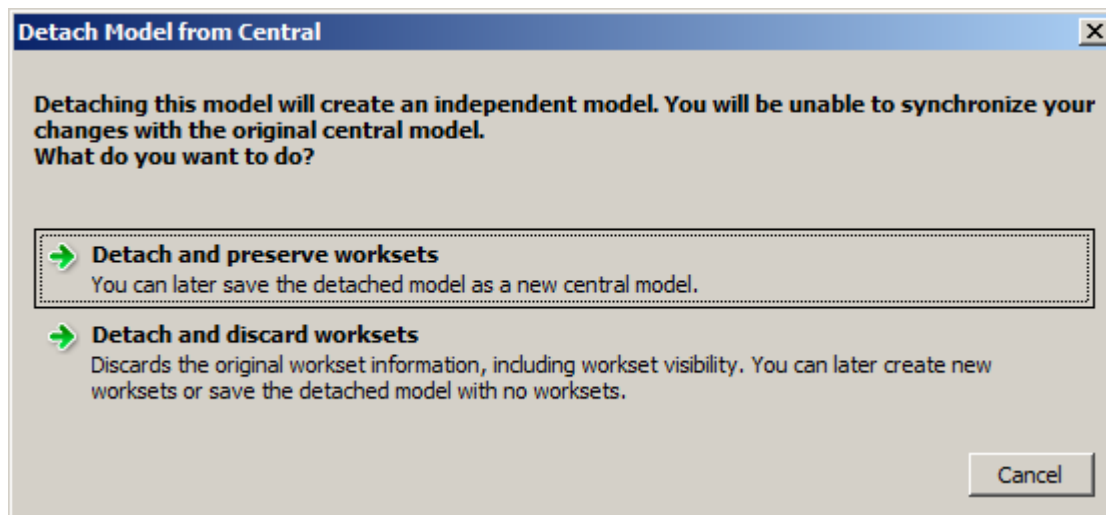




As we were told, we now go the "The Master Central Model" :



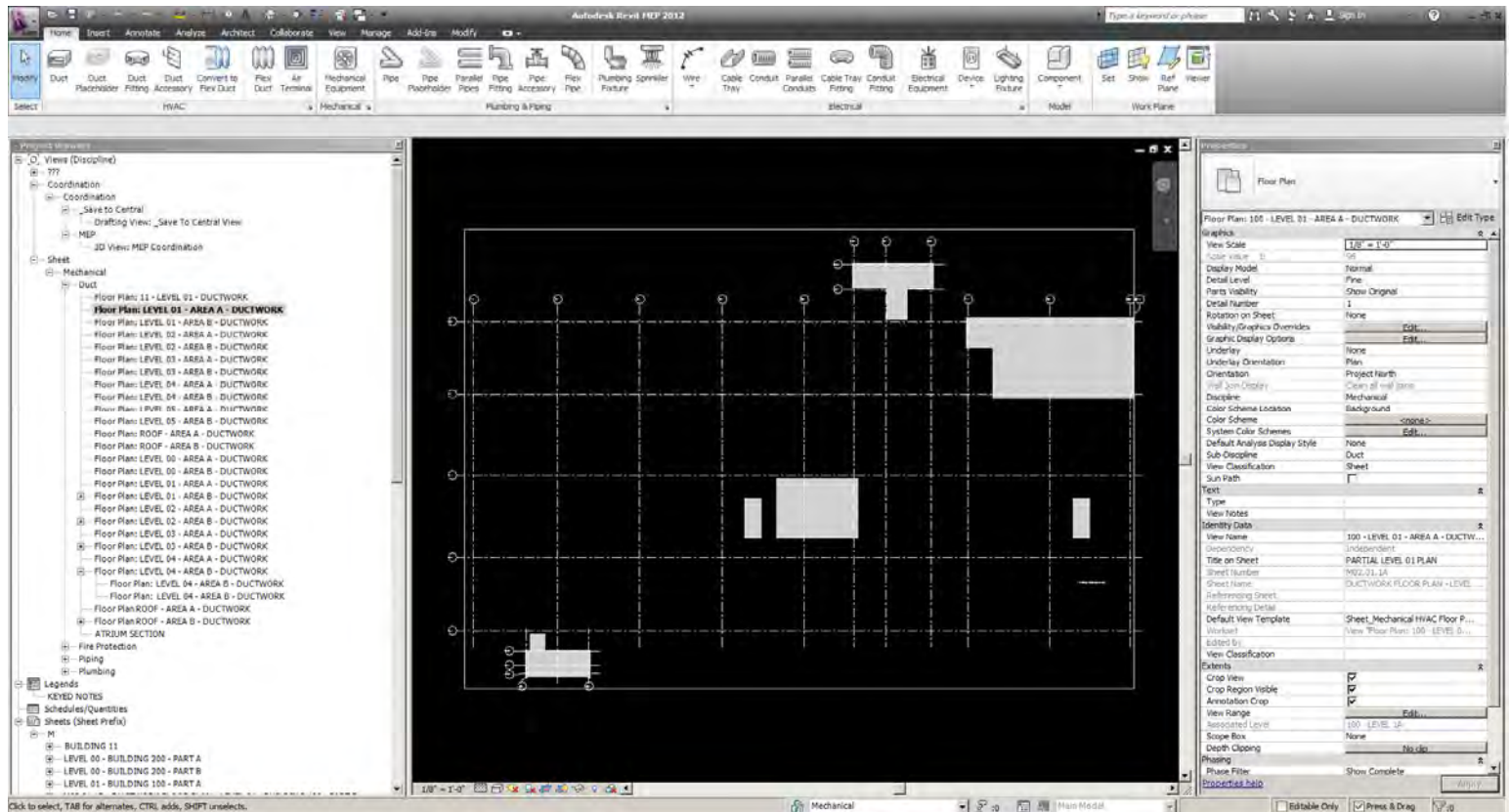
Again we are "Detaching from the Central" :



Opening the Master Central Model, "Drafting View":

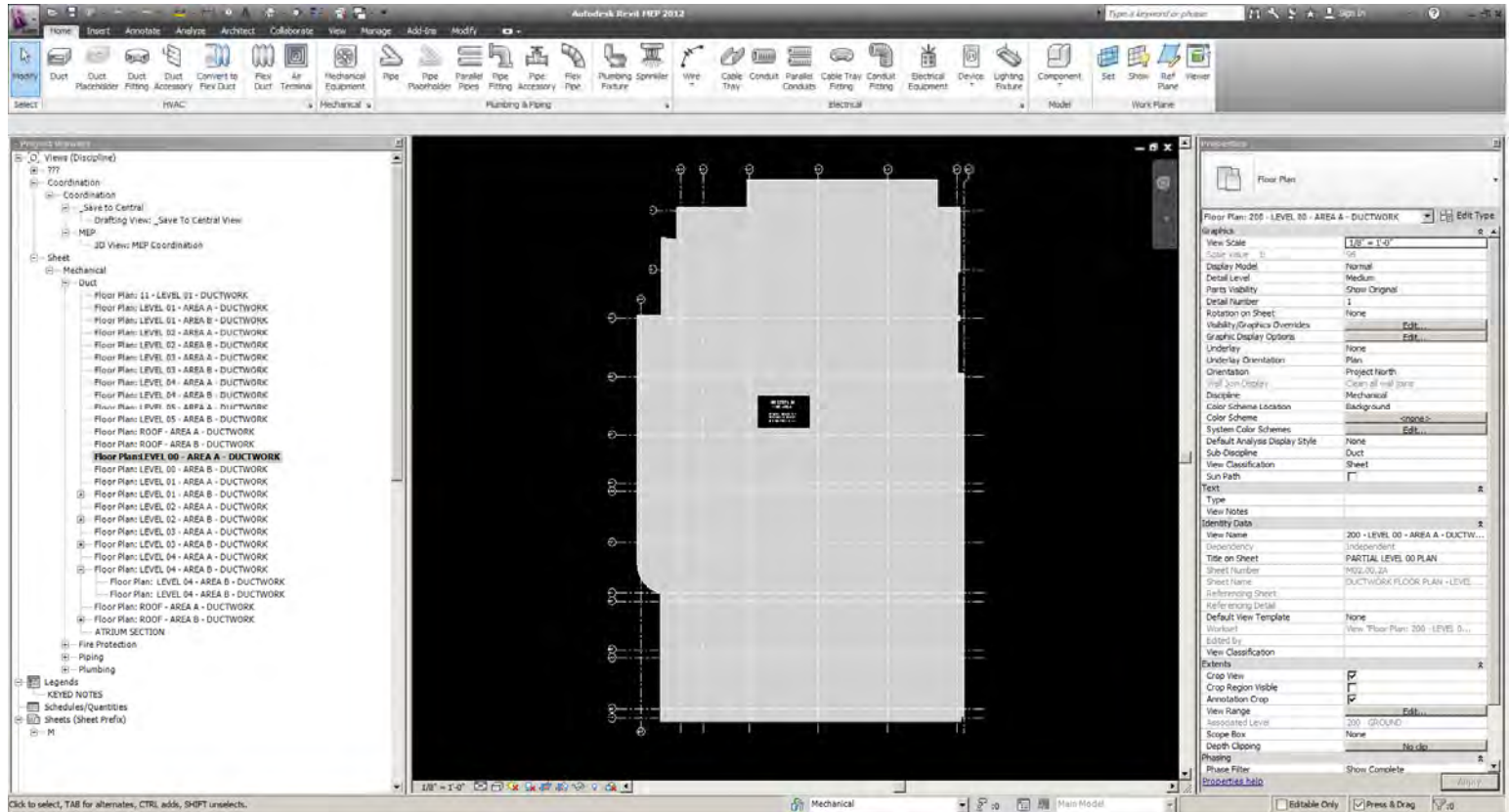


Switching Views to the "Level-01-Area-A-Ductwork View":



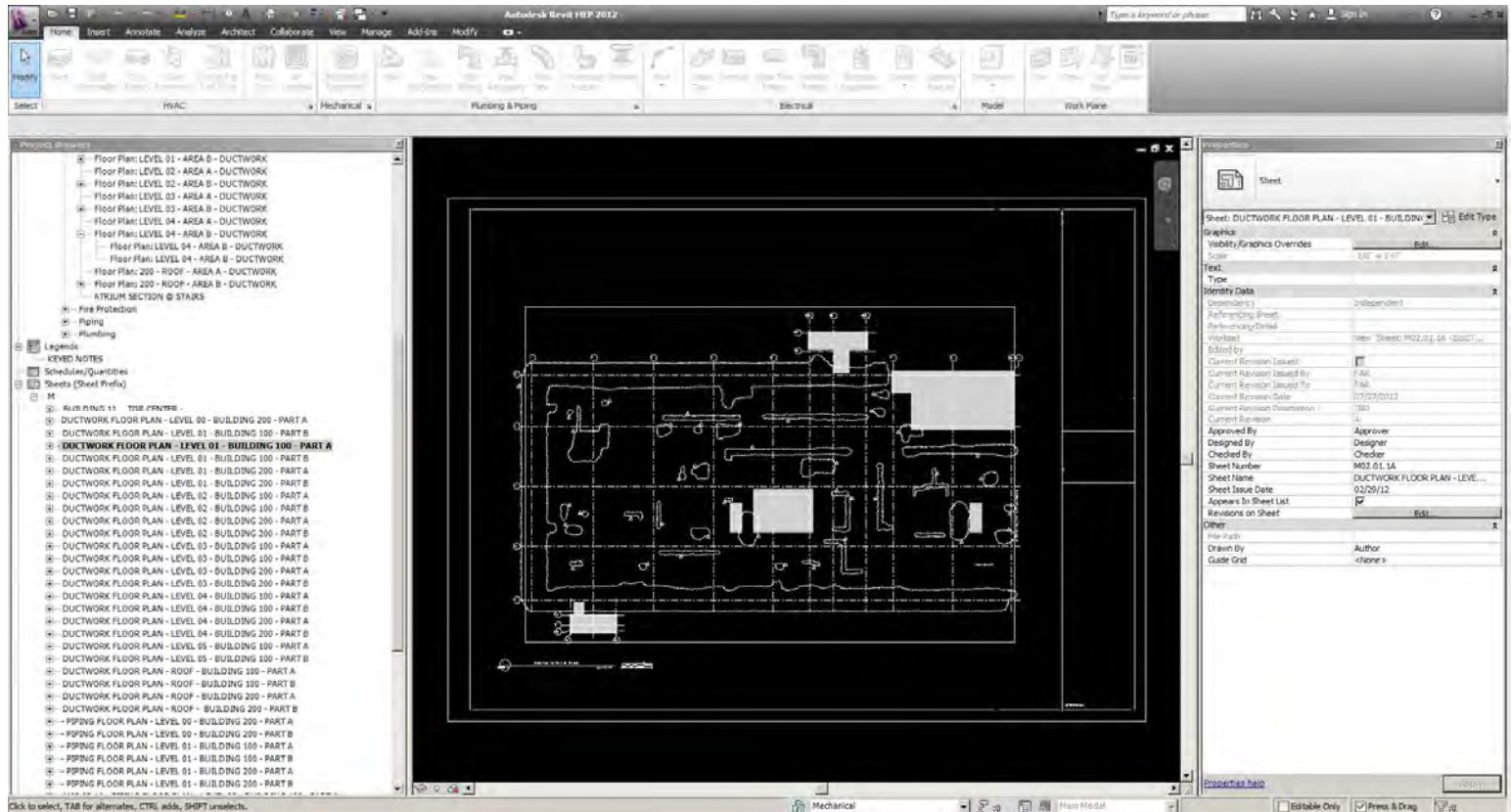
(no links have been loaded so we only see the grid)

## Switching Views to the "Level-00-Area-A-Ductwork View":



(again, no links have been loaded so we only see the grid)

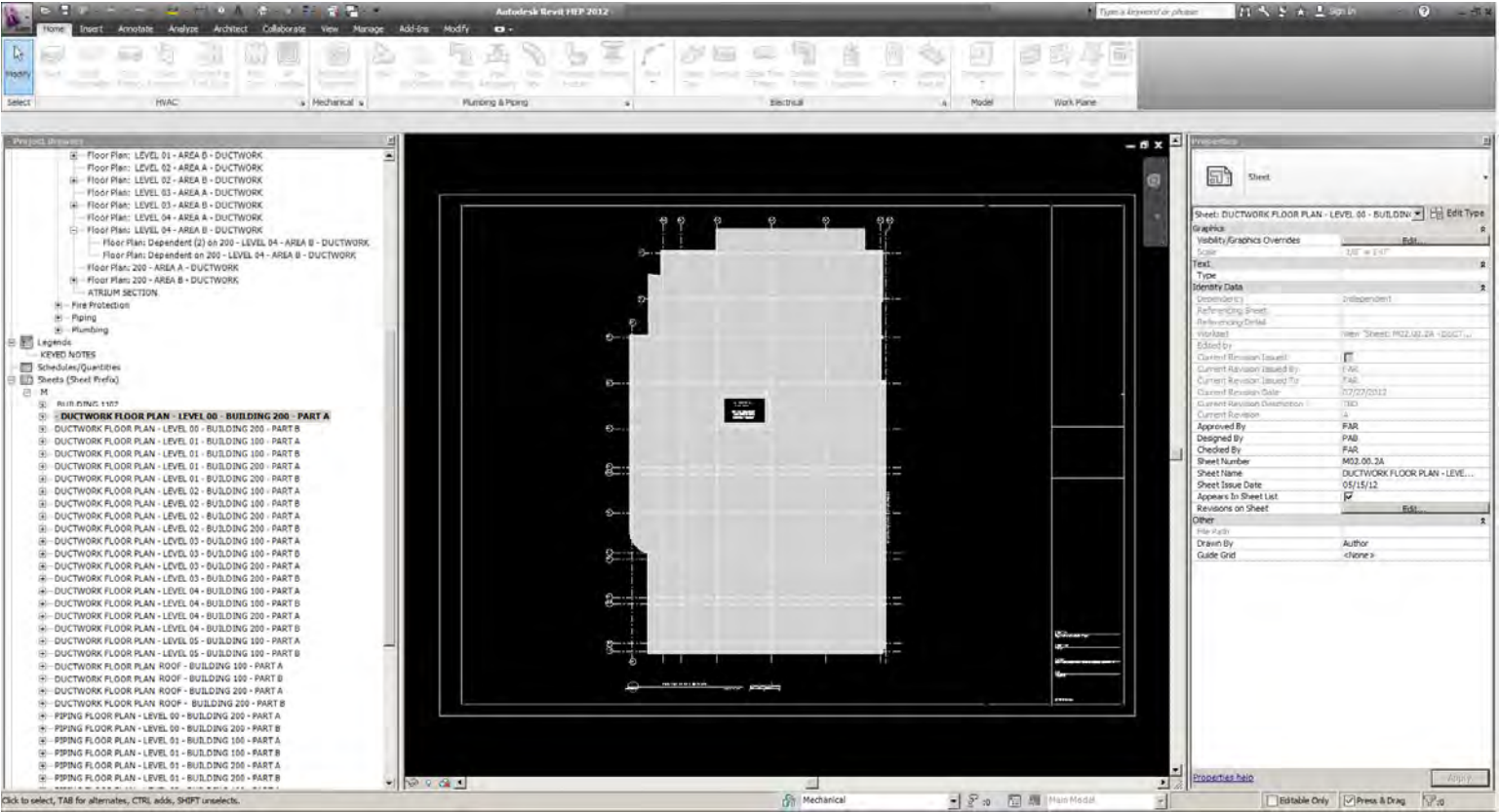
## Switching Views to the Sheet Views of "Level-01-Area-A-Ductwork View":



(again, no links have been loaded so we only see the grid)

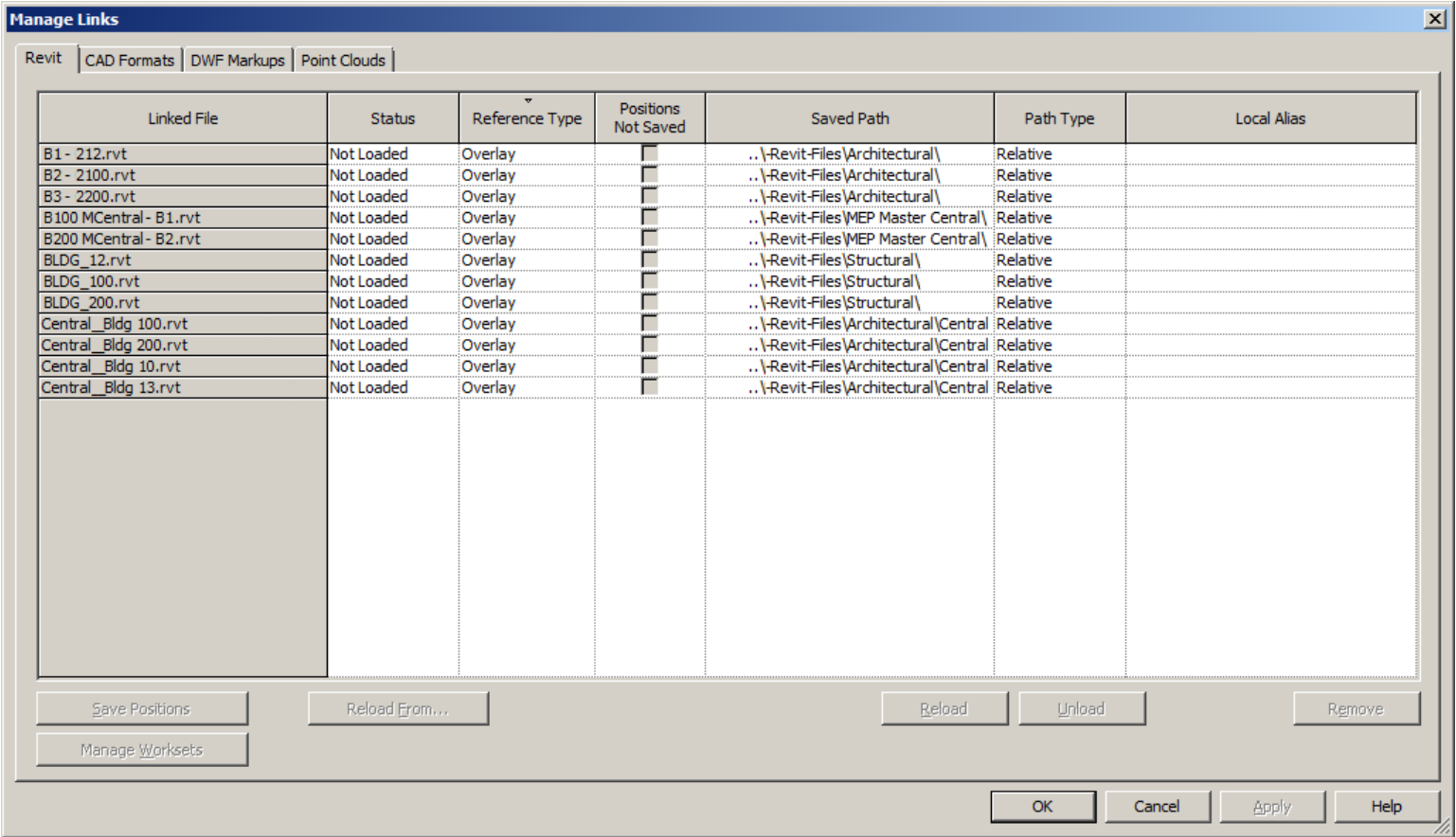


Switching Views to the Sheet Views of "Level-00-Area-A-Ductwork View":



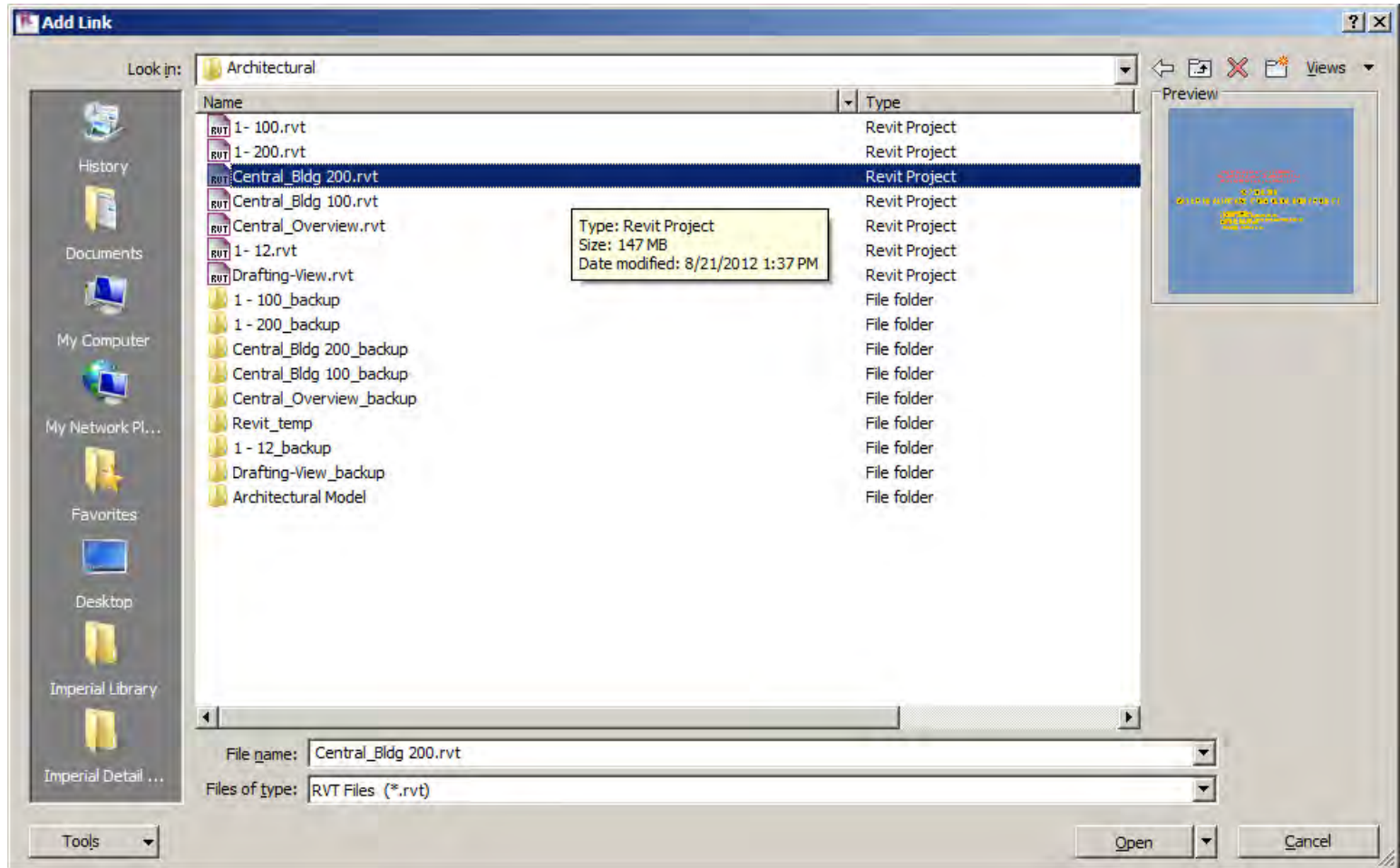
(again, no links have be loaded so we only see the grid)

We now will go to the "Manage Links Dialog Box" in order to "Add the missing Views or Files":



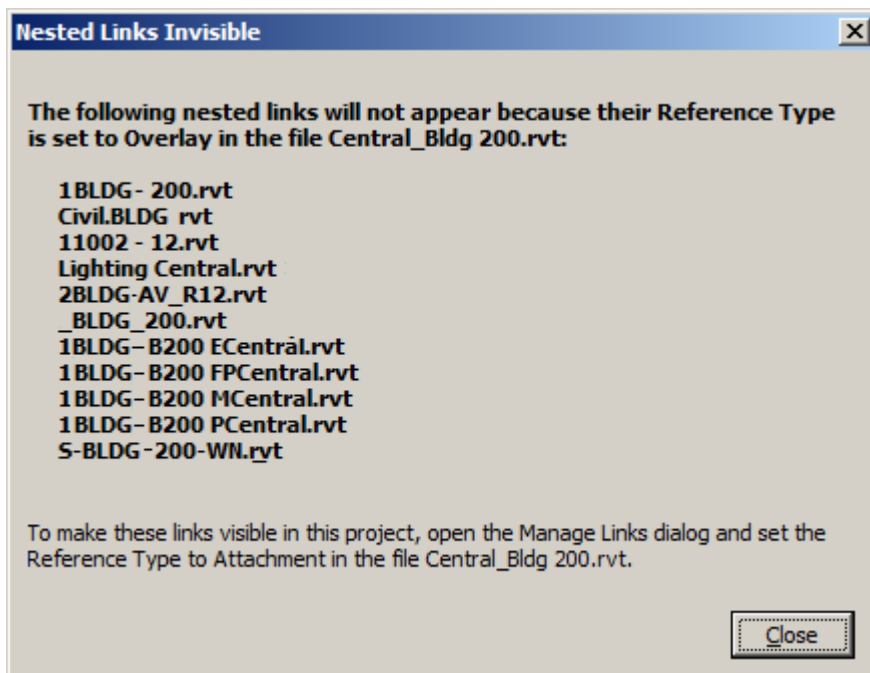
(similar to the AutoCAD "XREF Dialog Box")

We now "Link, or add the Central\_Bldg 200.rvt File":



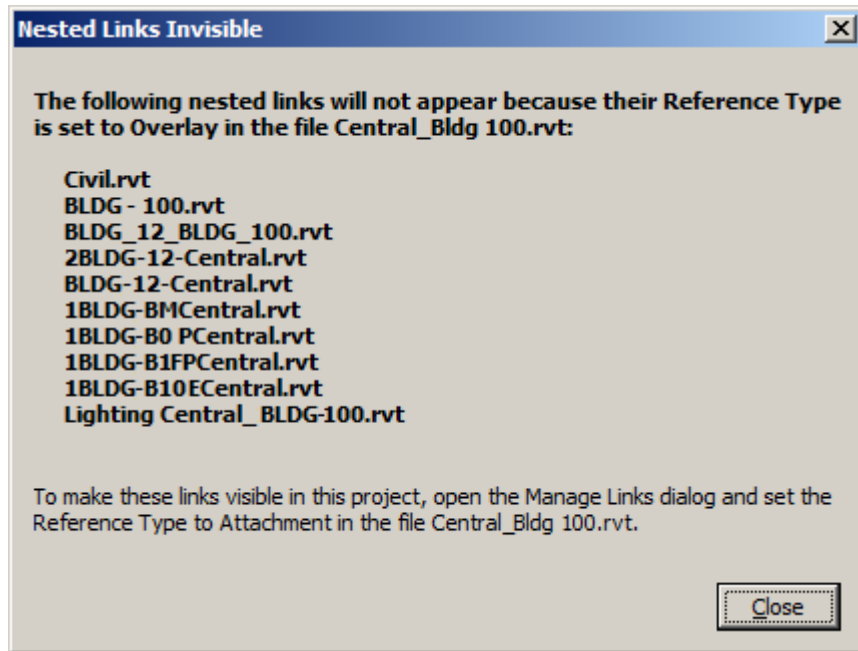
(again similar to the AutoCAD "XREF Dialog Box")

Here are the 1st set of Nested link Problems:



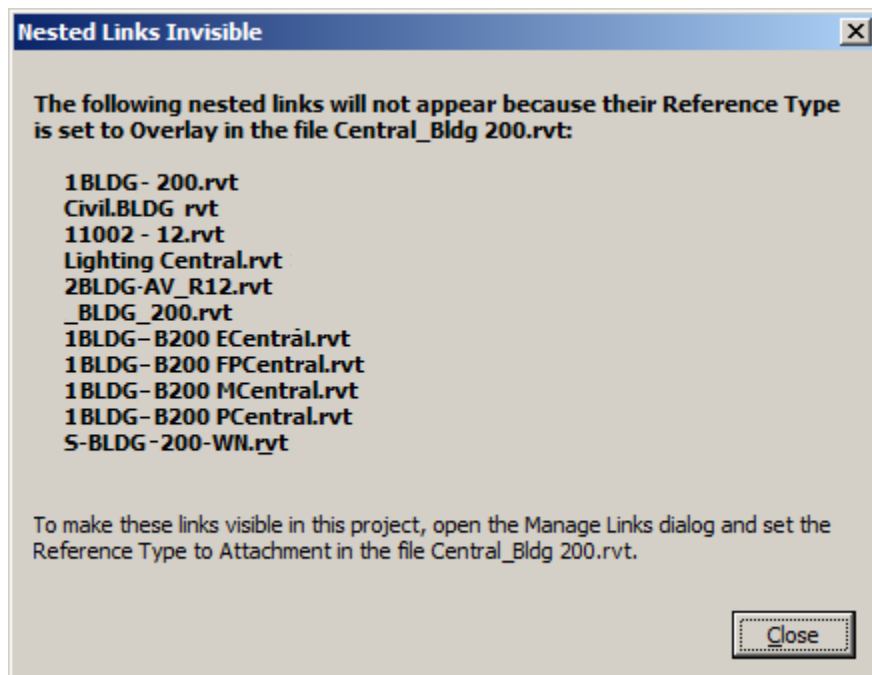
(again similar to the AutoCAD "XREF Dialog Box")

Here are the 2nd set of Nested link Problems:



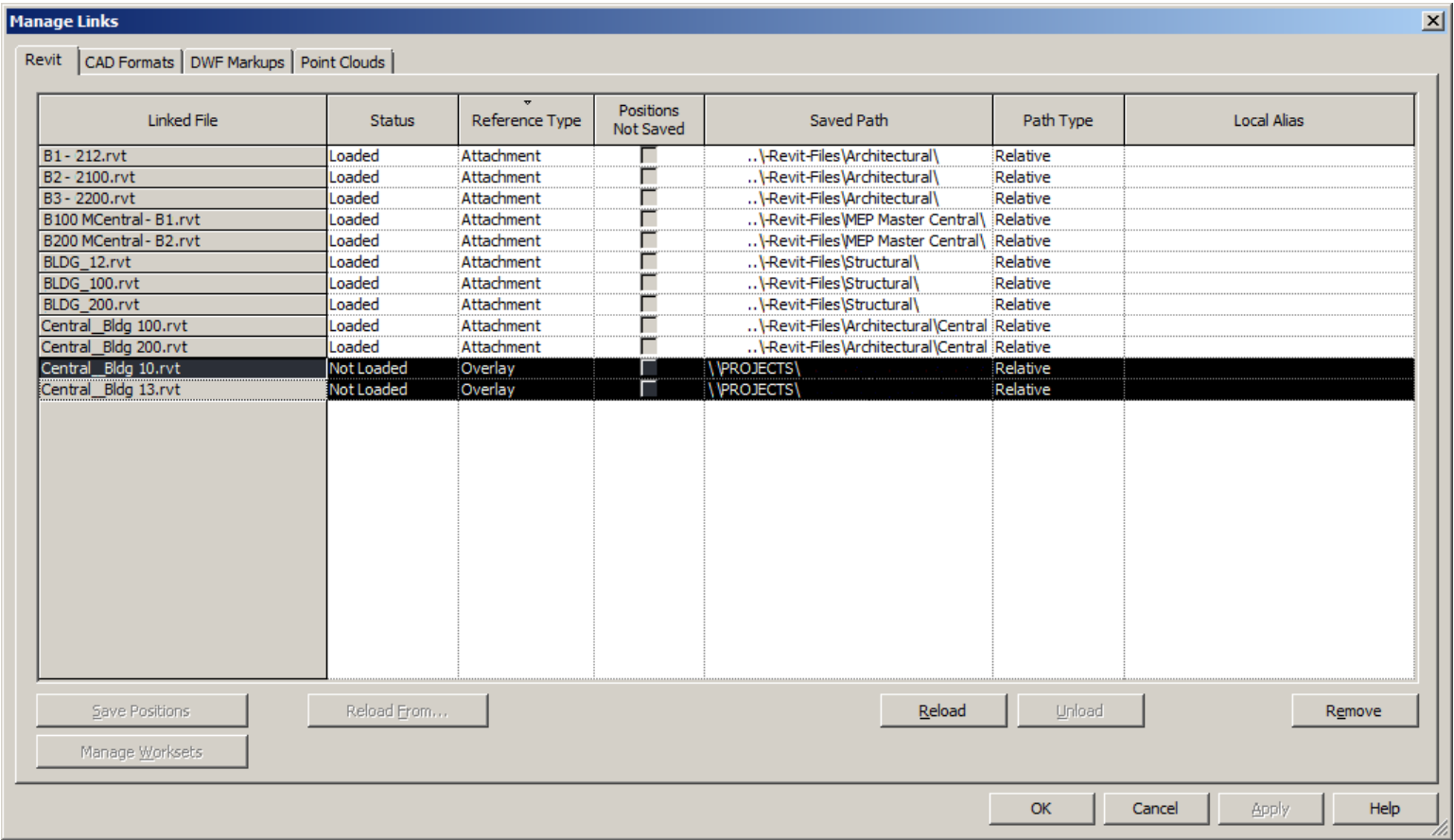
(again, still similar to the AutoCAD "XREF Dialog Box")

Yet again, here is another set of Nested link Problems:



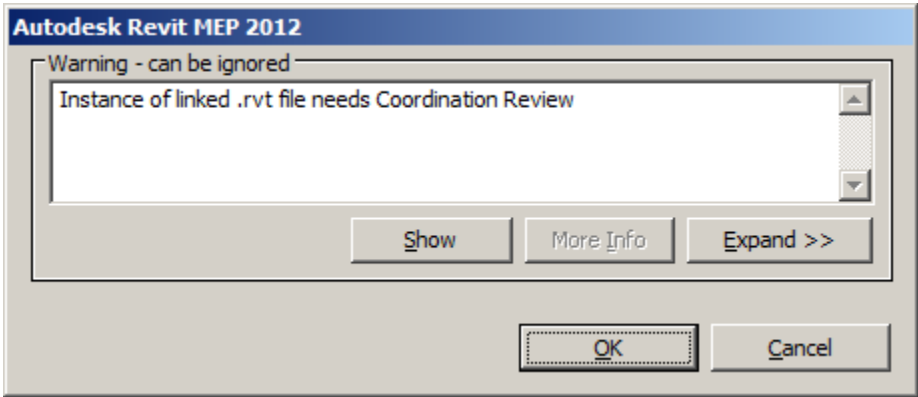


After linking all of the files provided we are still "Missing a Few Central\_Bldg.rvt Files":



(We are missing Central\_ Bldg 10, & 13)

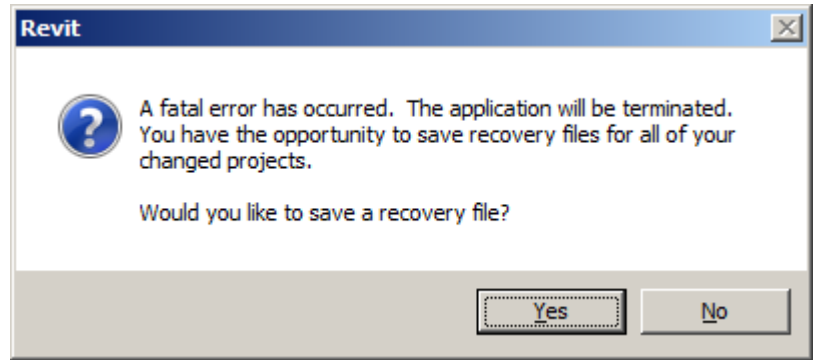
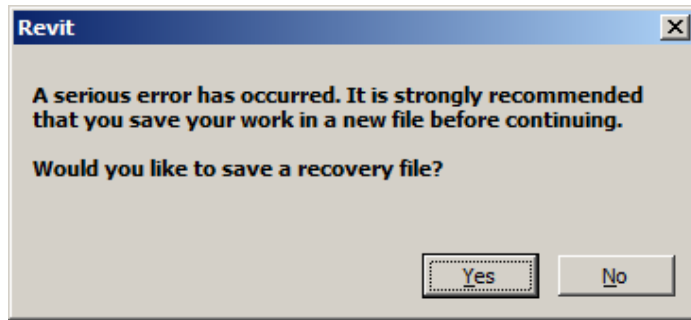
Here is yet another set of Linked.rvt file errors:



Also, just to be on the safe side, we have "Attached" off the files, per the manager links error messages in order to be able to view the project, not just the grid.

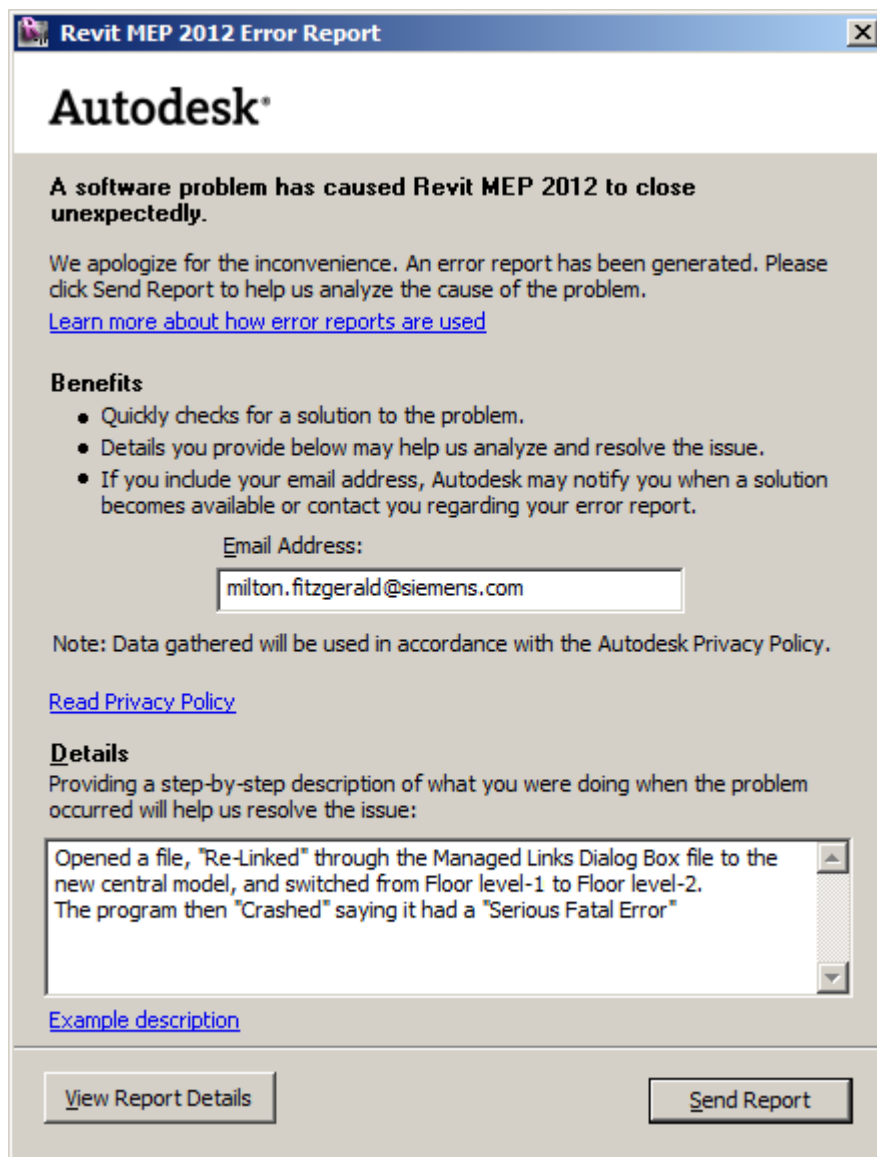
After all is said and done we start to have problem with Crashes, and the program shutting down:

And here are the "Fatal Error Notices":



(This was going to the Bldg 200 View)

Here is the Autodesk Error Notice Splash Screen:



And here are the "Final reports sent to Autodesk":

