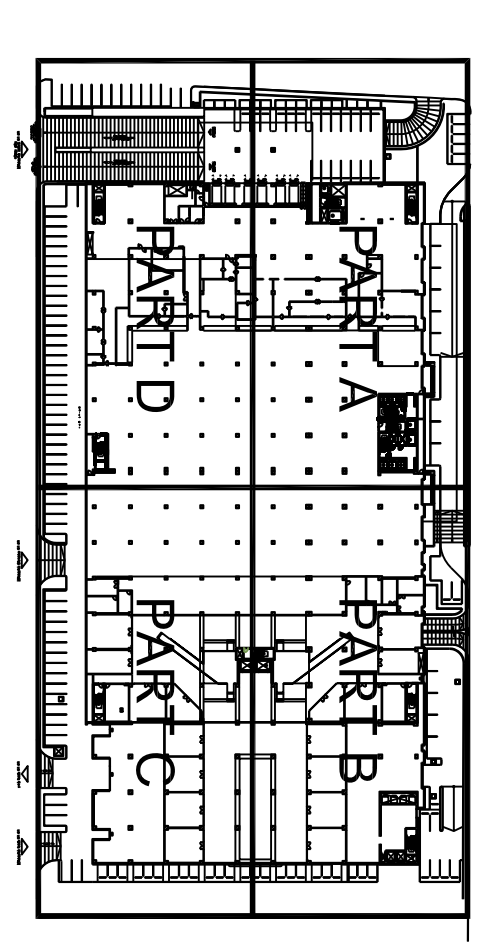


NOTE :-
COLUMNS REINFORCEMENT DETAIL FOR LEVELS ABOVE
GROUND ARE IN PROGRESS.

LEVEL	COLUMN FROM LEVEL OF B UP TO LEVEL OF G	COLUMN FROM LEVEL OF G UP TO LEVEL OF 1ST	COLUMN FROM LEVEL OF 1ST UP TO LEVEL OF 2ND	COLUMN FROM LEVEL OF 2ND UP TO LEVEL OF 3RD	COLUMN FROM LEVEL OF 3RD UP TO LEVEL OF 4TH	
TYPE	SEC. & RFT.	STIRRUPS	SEC. & RFT.	STIRRUPS	SEC. & RFT.	STIRRUPS
C1						
C2						
C3						
C4						
C5						
C6						
C7						
C8						
C5-1						



NOTES
 1.0 THE DRAWING IS THE PROPERTY OF LOCAL ENGINEERING OFFICE AND MUST NOT BE
 2.0 DO NOT SCALE FROM THE DRAWING.
 3.0 ALL DIMENSIONS ARE TO BE VERIFIED ON SITE AND APPROVED BY THE ARCHITECT.
 4.0 THE DRAWING SHOULD BE READ IN CONNECTION WITH OTHER RELEVANT
 RELEVANT SECTIONS OF THE SPECIFICATIONS.

PROJECT OWNER:
 AL SUBEAEI REAL ESTATE
 DEVELOPMENT AND INVESTMENT

MAIN CONSULTANT:
BH
 BADIH & KANTAR
 ARCHITECTS
 14B, DUBAI 1316, JUBAILAH ST. - BEIT AL GHARBI DISTRICT
 P.O. BOX 192103, DUBAI 192103, U.A.E.

PROJECT NAME:
 LULU HYPERMARKET
 STRUCTURAL DETAILS

PROJECT NO.: 276-277-278-279
DRAWING NO.: SA-51
DESIGNED BY: SAJ
CHECKED BY: M.A.S. AM
DATE: 12/2012

SCALE: 1:25

STRUCTURAL
 COLUMNS SCHEDULES AND DETAILS SHEET 1 OF 19

REV. NO. DATE DESCRIPTION APPROVED

9	AUG. 2013	CONSTRUCTION DOCUMENTS	D/M/T
8	JULY 2013	CONSTRUCTION DOCUMENTS	D/M/T
7	JULY 2013	CONSTRUCTION DOCUMENTS	D/M/T
6	MAY 2013	TENDER DOCUMENTS	D/M/T
5	MAY 2013	TENDER DOCUMENTS	D/M/T
4	MAY 2013	TENDER DOCUMENTS	D/M/T
3	MAY 2013	TENDER DOCUMENTS	D/M/T
2	DEC. 2012	TENDER DOCUMENTS	D/M/T
1	OCT. 2012	TENDER DOCUMENTS	D/M/T
0	SEP. 2012	Schedule design	D/M/T