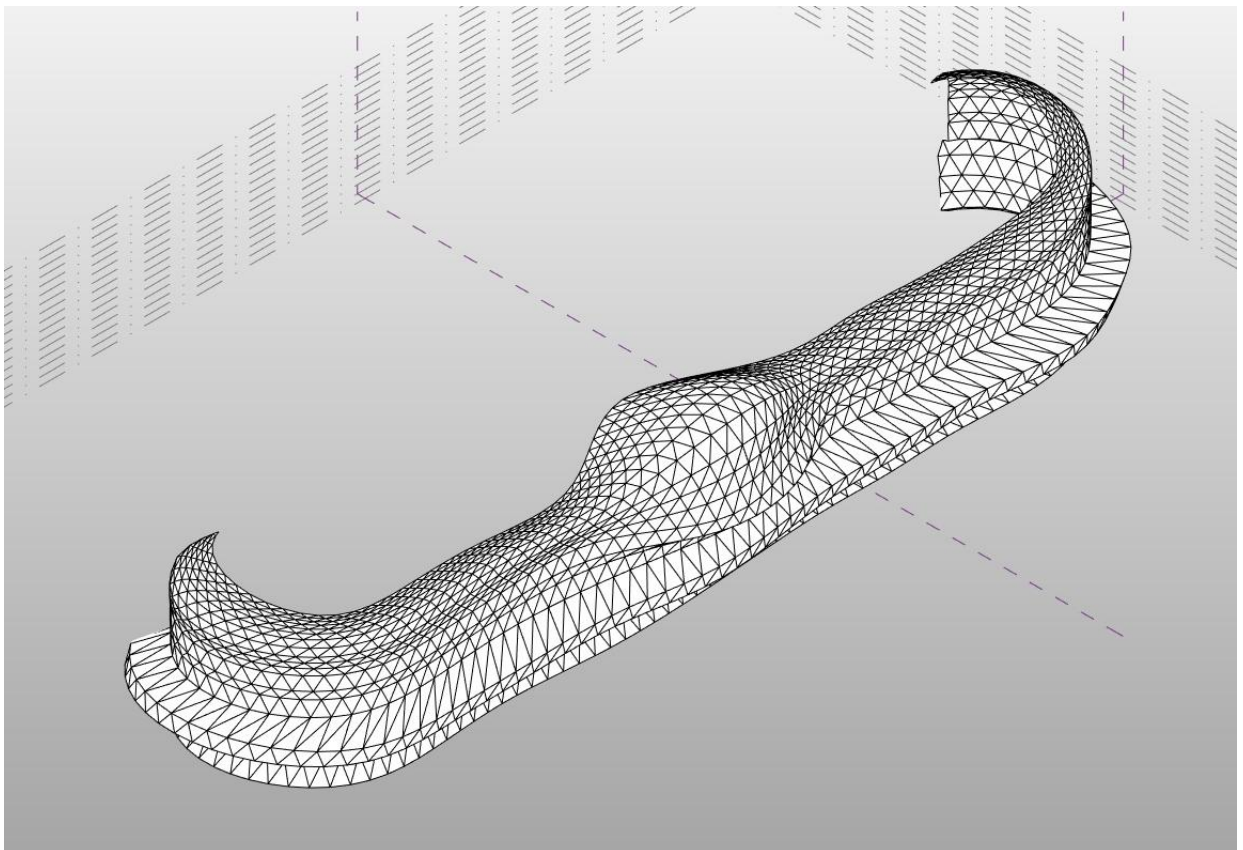


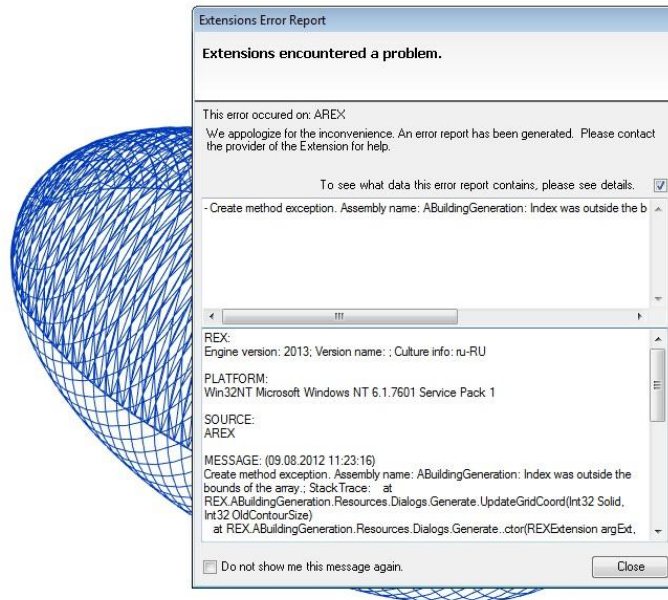
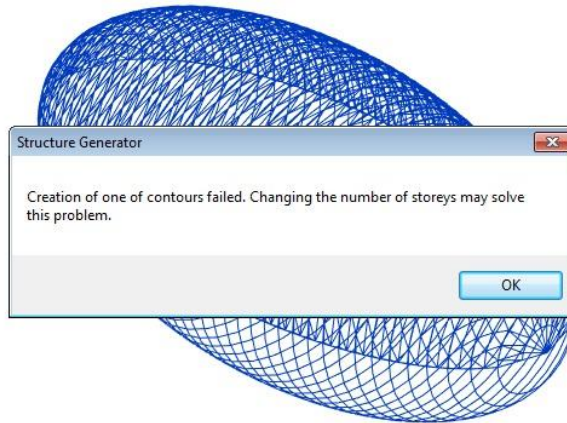
But with such forms we work



But with such forms we work

Create an ellipse of the individual lines gave an error file is attached

ERROR



- Create method exception.

Assembly name: ABuildingGeneration: Index was outside the bounds of the array.; StackTrace: at REX.ABuildingGeneratio ...

REX:

Engine version: 2013; Version name: ; Culture info: ru-RU

PLATFORM:

Win32NT Microsoft Windows NT 6.1.7601 Service Pack 1

SOURCE:

AREX

MESSAGE: (09.08.2012 11:23:16)

Create method exception.

Assembly name: ABuildingGeneration: Index was outside the bounds of the array.; StackTrace: at REX.ABuildingGeneration.Resources.Dialogs.Generate.UpdateGridCoord(Int32 Solid, Int32 OldContourSize)

at REX.ABuildingGeneration.Resources.Dialogs.Generate..ctor(REXExtension argExt, Boolean& bOK)

at REX.ABuildingGeneration.Extension.OnCreateDialogs()

at REX.Common.REXExtension.Create()

at REX.ABuildingGeneration.Extension.Create()

at REX.Common.REXApplication.Create(REXContext& AppContext)

DEPENDENCY: Autodesk.REX.Framework, Version=1.0.0.0, Culture=neutral, PublicKeyToken=51e16e3b26b42eda (file version: 2012.0.0.1709) | REX.Controls, Version=1.0.0.0, Culture=neutral, PublicKeyToken=null (file version: 2013.0.0.2251) | REX.Controls.WPF, Version=1.0.0.0, Culture=neutral, PublicKeyToken=null (file version: 2013.0.0.2251) | REX.Controls.Forms, Version=1.0.0.0, Culture=neutral, PublicKeyToken=null (file version: 2013.0.0.2251) | REX.Mathematics, Version=1.0.0.0, Culture=neutral, PublicKeyToken=null (file version: 2013.0.0.2251) | REX.Preferences, Version=2013.0.0.2251, Culture=neutral, PublicKeyToken=null (file version: 2013.0.0.2251) | REX.System, Version=2013.0.0.2251, Culture=neutral, PublicKeyToken=null (file version: 2013.0.0.2251) | REX.Service, Version=2013.0.0.2251, Culture=neutral, PublicKeyToken=null (file version: 2013.0.0.2251)

LAST ENTRIES: 4 / 1