

Excel Populated Schedules / Tables

Concept Populate Parameters in an Annotation Symbol with an Excel driven Type Catalog to quickly produce and update Schedules and Tables

Procedure

Creating the Annotation Symbol Header

1. File > New > Annotation Symbol... > Choose Generic Annotation.rft for the template.
2. Create the Header Graphic using lines and text.

DRILLED PIER SCHEDULE									
MARK	TOP ELEV	MIN DIA	SERVICE LOAD CASE	DESIGN LOADS					
				F(x)	F(y)	F(z)	M(x)	M(y)	M(z)

Creating the Annotation Symbol Body

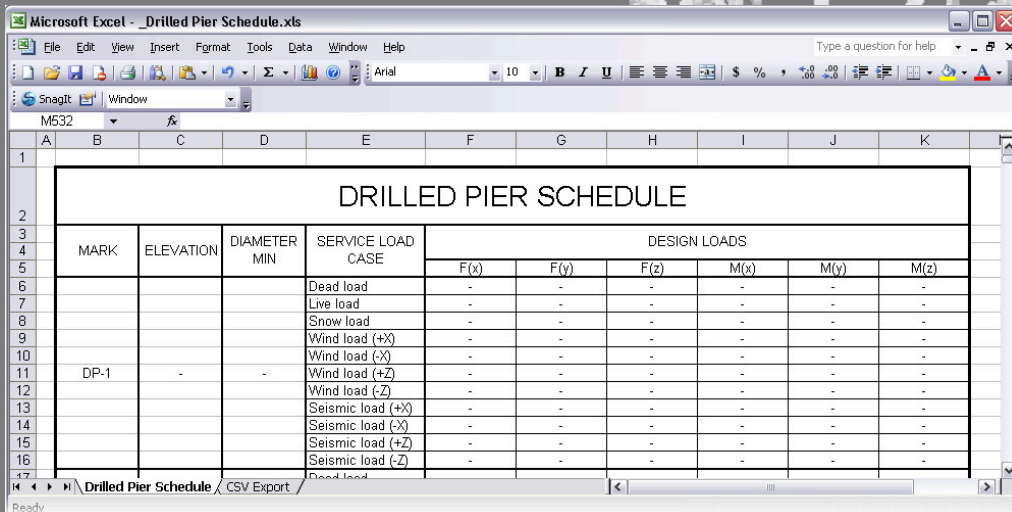
1. File > New > Annotation Symbol... > Choose Generic Annotation.rft for the template
2. Create the body of the schedule for one type using Lines, Text and Labels for the Parameters
Excel will Populate

MARK	EL	DIA	DEAD LOAD	DL Fx	DL Fy	DL Fz	DL Mx	DL My	DL Mz
			LIVE LOAD	LL Fx	LL Fy	LL Fz	LL Mx	LL My	LL Mz
			SNOW LOAD	SWL Fx	SWL Fy	SWL Fz	SWL Mx	SWL My	SWL Mz
			WIND LOAD (+X)	WL +X Fx	WL +X Fy	WL +X Fz	WL +X Mx	WL +X My	WL +X Mz
			WIND LOAD (-X)	WL -X Fx	WL -X Fy	WL -X Fz	WL -X Mx	WL -X My	WL -X Mz
			WIND LOAD (+Z)	WL +Z Fx	WL +Z Fy	WL +Z Fz	WL +Z Mx	WL +Z My	WL +Z Mz
			WIND LOAD (-Z)	WL -Z Fx	WL -Z Fy	WL -Z Fz	WL -Z Mx	WL -Z My	WL -Z Mz
			SEISMIC LOAD (+X)	SCL +X Fx	SCL +X Fy	SCL +X Fz	SCL +X Mx	SCL +X My	SCL +X Mz
			SEISMIC LOAD (-X)	SCL -X Fx	SCL -X Fy	SCL -X Fz	SCL -X Mx	SCL -X My	SCL -X Mz
			SEISMIC LOAD (+Z)	SCL +Z Fx	SCL +Z Fy	SCL +Z Fz	SCL +Z Mx	SCL +Z My	SCL +Z Mz
			SEISMIC LOAD (-Z)	SCL -Z Fx	SCL -Z Fy	SCL -Z Fz	SCL -Z Mx	SCL -Z My	SCL -Z Mz

LABEL
TEXT
LABEL

Creating the Excel Schedule / Table

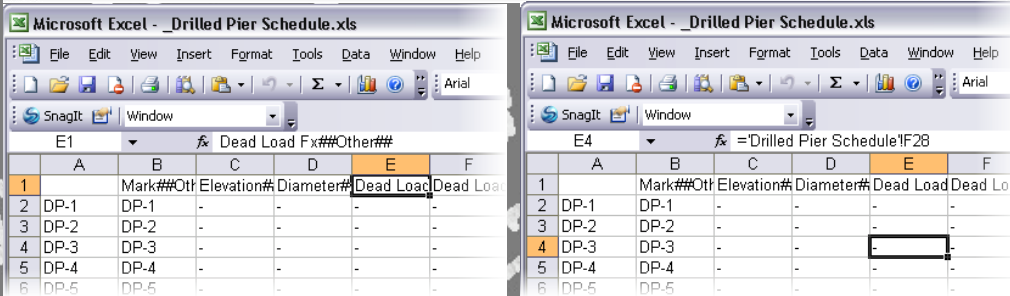
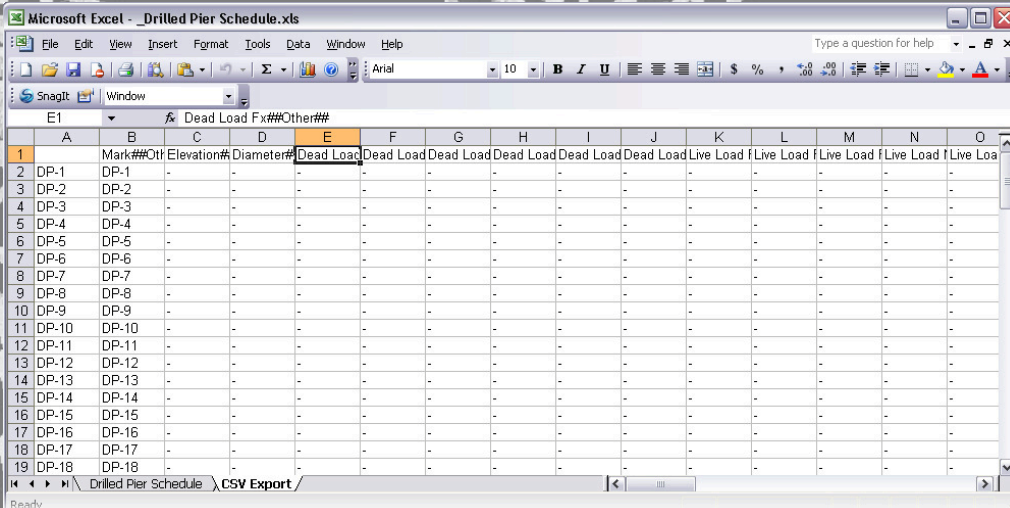
1. Create an Excel version of the Schedule / Table



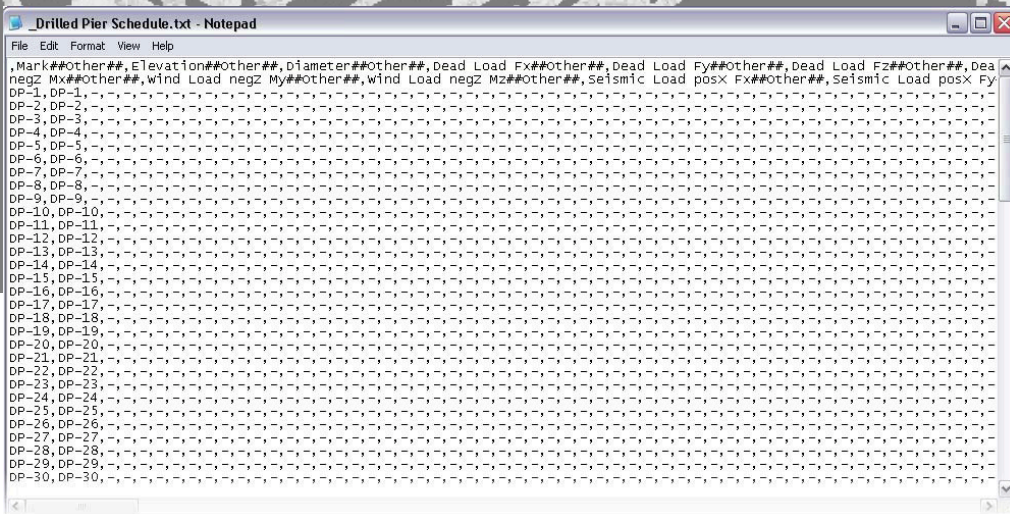
Excel Populated Schedules / Tables (Continued)

Creating the Type Catalog

1. Create a new worksheet to map the values of the previous worksheet to a Type Catalog format



2. File > Save As... > Save as type: CSV (Comma delimited)(* .csv)
3. Rename the *.csv. The name should be the same as that used for the Annotation Symbol Body Family created in the previous step with a *.txt extension. This is now a Type Catalog



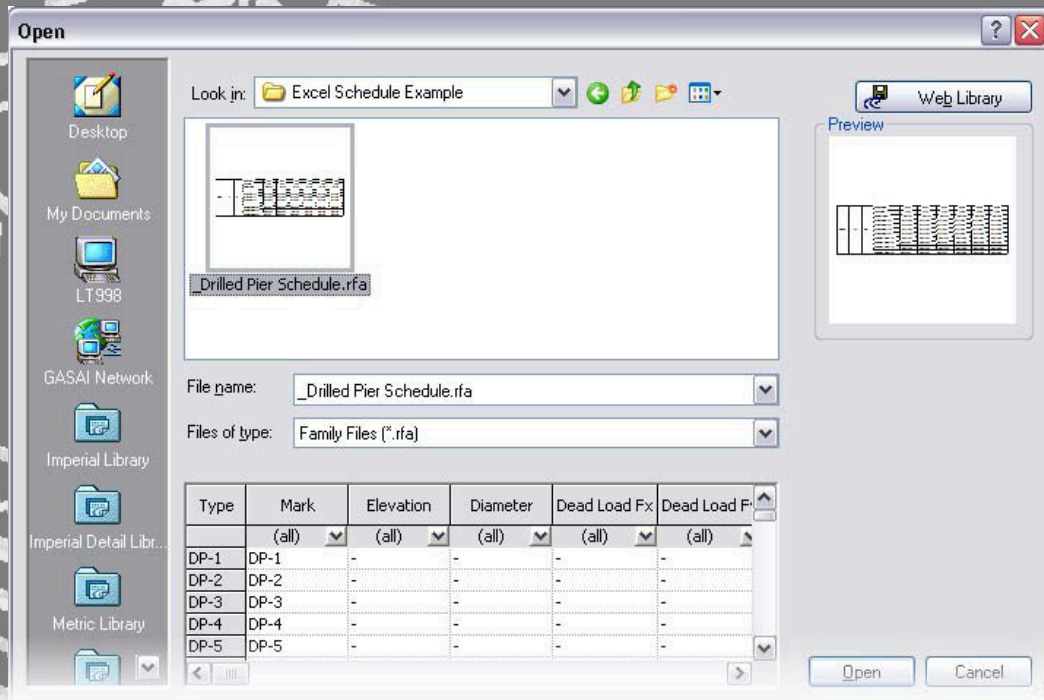


Excel Populated Schedules / Tables (Continued)

Placing the Schedule on a Sheet

1. Load the Header and Body Symbols into the project. File > Load from Library > Load Family...

NOTE: When loading the Body Symbol make sure to load all of the available types



2. Place the Header family followed by multiple placements of the Body family to create the finished schedule

Updating the Schedule after Initial Placement

1. Make all necessary changes / adjustments to the Excel Schedule
2. Re-create the Type Catalog
3. Overwrite the Previous Type Catalog with the New Type Catalog
4. Reload All Available Types of the Body Family

NOTE: Reload the family either by: File > Load from Library > Load Family... or you can find the family in the Project browser and Right Click > Reload

