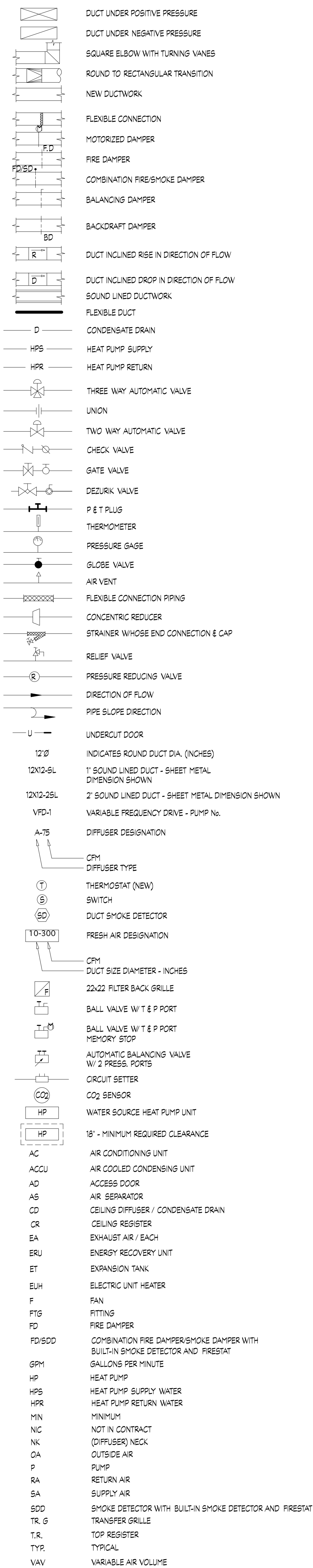


**GENERAL NOTES:**

- COORDINATE WITH ELECTRICAL CONTRACTOR TO INSURE N.E.C. REQUIRED CLEARANCES FROM DUCTWORK, PIPING, ETC. ARE MAINTAINED AROUND ELECTRICAL EQUIPMENT (PANELBOARDS, SWITCHBOARDS, DISCONNECTS, ETC.)
- DUCTWORK DIMENSION SHOWN ON DRAWINGS ARE SHEETMETAL DIMENSIONS. NET FREE AREA SHALL BE SHEETMETAL DIMENSIONS LESS THE LINEAR THICKNESS ON LINED DUCTWORK.
- CONTRACTOR SHALL REFER TO THE ELECTRICAL DRAWINGS FOR THE PROPER ELECTRICAL CHARACTERISTICS FOR ALL MOTORS, HEATERS, AND ALL OTHER ELECTRICAL DEVICES FURNISHED BY THE CONTRACTOR. IT IS THE RESPONSIBILITY OF THE MECHANICAL CONTRACTOR TO COORDINATE WITH THE ELECTRICAL CONTRACTOR FOR ALL REQUIRED ELECTRICAL CONNECTIONS AND CIRCUITS, ETC. REQUIRED FOR MECHANICAL EQUIPMENT, HEATERS, CONTROLS, ETC.
- FLEXIBLE DUCT RUNOUT SHALL NOT EXCEED 4'-0". FOR RUNOUTS LONGER THAN 4 FEET USE COMBINATION OF ROUND SHEETMETAL DUCT AND FLEXIBLE DUCT.
- MOTORS SHALL BE DESIGNED TO OPERATE ON VOLTAGE SPECIFIED. CONTRACTOR FURNISHING LARGER MOTORS THAN THOSE INDICATED SHALL BE RESPONSIBLE FOR ANY ADDITIONAL COST AND SHALL PAY ALL COSTS.
- CONTRACTOR SHALL VERIFY ALL DIMENSIONS AND LOCATIONS OF EQUIPMENT BEFORE INSTALLATION.
- IT IS THE RESPONSIBILITY OF THE CONTRACTOR TO PROVIDE ALL WORK AND MATERIALS TO ACCOMPLISH THE INTENT OF THE PLANS. PLANS INDICATE THE EXTENT, GENERAL CHARACTER AND LOCATION OF WORK DIAGRAMMATICALLY ONLY. WORK INDICATED BY HAVING MINOR DETAILS NOT SHOWN, SHALL BE FURNISHED COMPLETE, BY THIS CONTRACTOR, TO PERFORM THE FUNCTION INTENDED.
- DUCT SMOKE DETECTOR SHALL BE FURNISHED AND WIRED BY ELECTRICAL CONTRACTOR AND TO BE INSTALLED BY MECHANICAL CONTRACTOR. DUCT SMOKE DETECTORS SHALL BE POWERED BY FIRE ALARM SYSTEM.
- CONTRACTOR TO PROVIDE A NEW SET OF FILTERS IN ALL HVAC EQUIPMENTS AT THE TIME OF SUBSTANTIAL COMPLETION PLUS ONE ADDITIONAL SET FOR ALL HVAC EQUIPMENTS.
- ALL LOCAL GOVERNING CODES TO BE STRICTLY OBSERVED.
- PUMPS SHALL BE SELECTED SO THAT THE OPERATING POINT ON THE SELECTED PUMP CURVE WILL BE AT OR THE LEFT OF THE POINT OF MAXIMUM EFFICIENCY.
- PROVIDE MINIMUM 12" ACCESS DOORS IN DUCTWORK AND THRU ARCHITECTURAL FINISHES FOR FIRE DAMPERS.
- MOUNT THERMOSTATS WHERE INDICATED ON THE DRAWINGS 60" AFF.
- ALL CONTROL ELECTRICAL POWER WIRING SHALL BE FURNISHED AND INSTALLED BY THE CONTROL CONTRACTOR. POWER SOURCES SHALL BE TAKEN FROM THE NEAREST ELECTRICAL PANELS. CIRCUITS SHALL BE DEDICATED TO THE CONTROLS AND SHALL BE CLEARLY MARKED. POWER FOR CONTROLS SHALL NOT BE TAKEN FROM CIRCUITS BEING USED FOR OTHER PURPOSES.
- ALL CONCRETE PADS FOR MECHANICAL EQUIPMENT SHALL BE PROVIDED BY GENERAL CONTRACTOR. MECHANICAL CONTRACTOR TO PROVIDE SIZE AND LOCATION OF PAD TO THE GENERAL CONTRACTOR.
- PROVIDE AIR VENTS FOR HIGH POINTS AND DRAINS FOR LOW POINTS OF PIPEWORK.
- MECHANICAL EQUIPMENT TO BE EQUIPPED WITH SUB METERS. REFER TO ELECTRICAL DRAWINGS FOR LOCATION. CONNECT SUB METERS TO BAS FOR MONITORING AND TRENDS.

**SYMBOL LIST**



**IMC 2006 PHASE 2A VENTILATION SCHEDULE**

Room	Area	people	Area CFM	People CFM	Total	Final
Wn-111	577	19		285	285	290
Wn-113	572	19		285	285	290
Wn-115	1260	60		900	900	900
WN-125A	890	0	89		89	90
WN-112	380	12		180	180	180
WN-114	408	16		240	240	240
WN-116	438	16		240	240	240
				<b>TOTAL</b>	<b>2230</b>	
Wn-211	1138	17		340	340	340
Wn-215	1281	17		340	340	340
WN-225A	890	0	89		89	90
Wn-212	539	19		285	285	290
WN-214	563	19		285	285	290
				<b>TOTAL</b>	<b>1350</b>	
Wn-311	1138	17		340	340	340
Wn-315	1281	17		340	340	340
WN-325A	890	0	89		89	90
WN-312	203	4		60	60	80
Wn-314	431	19		285	285	290
WN-316	450	19		285	285	290
				<b>TOTAL</b>	<b>1430</b>	

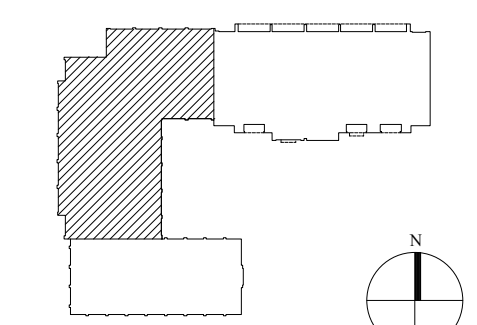
**IMC 2006 PHASE 2A VENTILATION SCHEDULE**

Room	Area	people	Area CFM	People CFM	Total	Final
WN-125B	475	0	47.5		47.5	50
WN-117	608	20		300	300	300
WN-119	490	20		300	300	300
Wn-128	616	21		315	315	320
				<b>TOTAL</b>	<b>970</b>	
WN-225B	475	0	47.5		47.5	50
WN-217	607	20		300	300	300
WN-219	493	20		300	300	300
WN-222	628	20		300	300	300
				<b>TOTAL</b>	<b>950</b>	
Wn-317	594	20		300	300	300
WN-319	496	20		300	300	300
WN-324	394	20		300	300	300
Wn-326	389	20		300	300	300
WN-325B	475	0	47.5		47.5	50
				<b>TOTAL</b>	<b>1250</b>	

**SUBMISSION**

02.14.11 PERMIT SUBMISSION

**SEAL**



LANDSCAPE ARCHITECT  
CLINTON AND ASSOCIATES  
5200 BALTIMORE AVENUE SUITE 201  
HYATTSVILLE, MD 20881  
301.699.5600

**WOODLEY NORTH**  
NATIONAL CATHEDRAL SCHOOL FOR GIRLS  
MOUNT ST. ALBAN, WASHINGTON, D.C.

M.E.P. ENGINEERS  
ALLEN & SHARIF ENGINEERING  
7061 DEEPAE DRIVE SUITE 200  
COLUMBIA, MD 21045  
410.381.7100

STRUCTURAL ENGINEERS  
THORNTON TOMASETTI GROUP  
2000 L STREET, NW, SUITE 840  
WASHINGTON, DC 20036  
202.822.8222

ARCHITECT  
HARTMAN-COX ARCHITECTS  
1074 THOMAS JEFFERSON ST, NW  
WASHINGTON, DC 20007  
202.331.6446

DRAWING TITLE  
**DATA SHEET**  
**-MECHANICAL-**

DATE  
FEBRUARY 14, 2011

SCALE  
NONE

**M0.00**  
PHASE 2

LANDSCAPE ARCHITECT  
CLINTON AND ASSOCIATES  
5200 BALTIMORE AVENUE SUITE 201  
HYATTSVILLE, MD 20781  
301.699.5600

M.E.P. ENGINEERS  
ALLEN & SHARFF ENGINEERING  
7061 DEPAUVE DRIVE SUITE 200  
COLUMBIA, MD 21045  
410.381.7100

**WOODEY NORTH**  
NATIONAL CATHEDRAL SCHOOL FOR GIRLS  
MOUNT ST. ALBAN, WASHINGTON, D.C.

STRUCTURAL ENGINEERS  
THORNTON TOMASETTI GROUP  
2000 L STREET, N.W. SUITE 840  
WASHINGTON, DC 20036  
202.822.8222

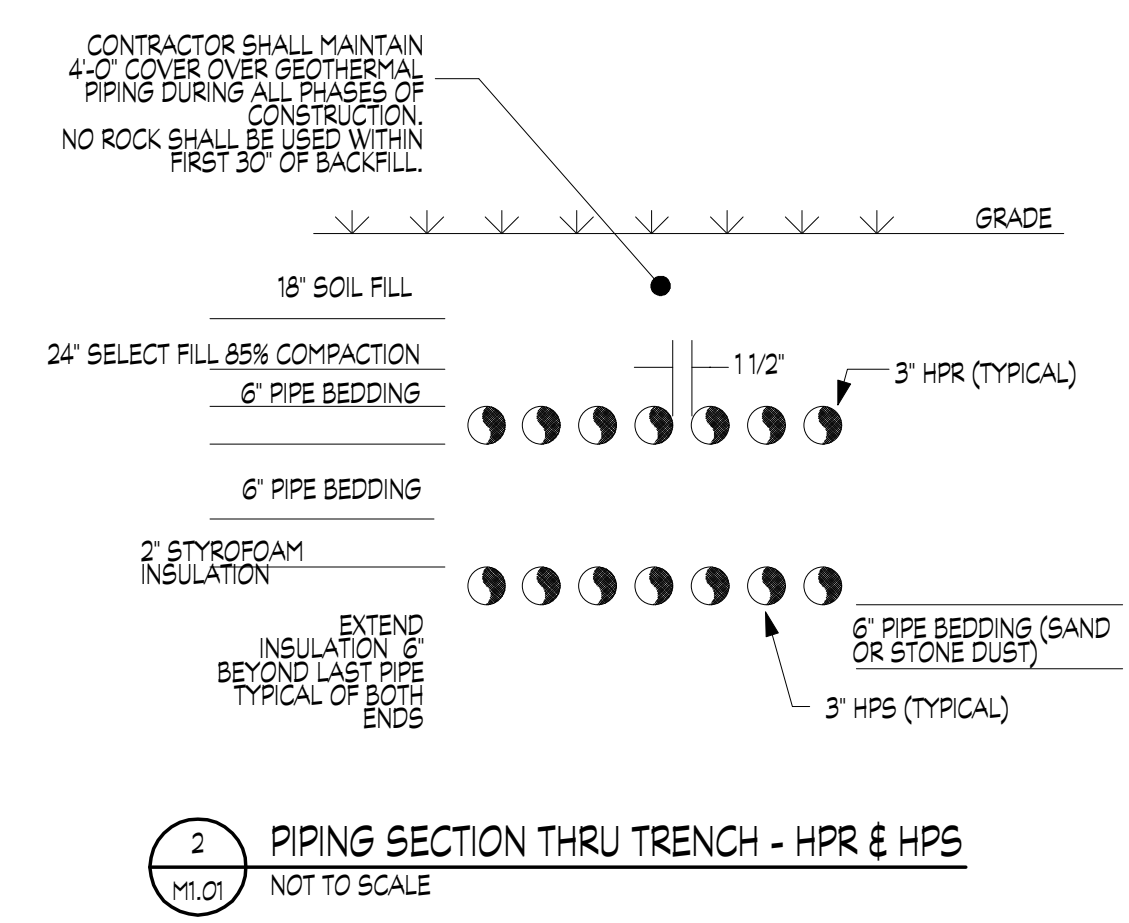
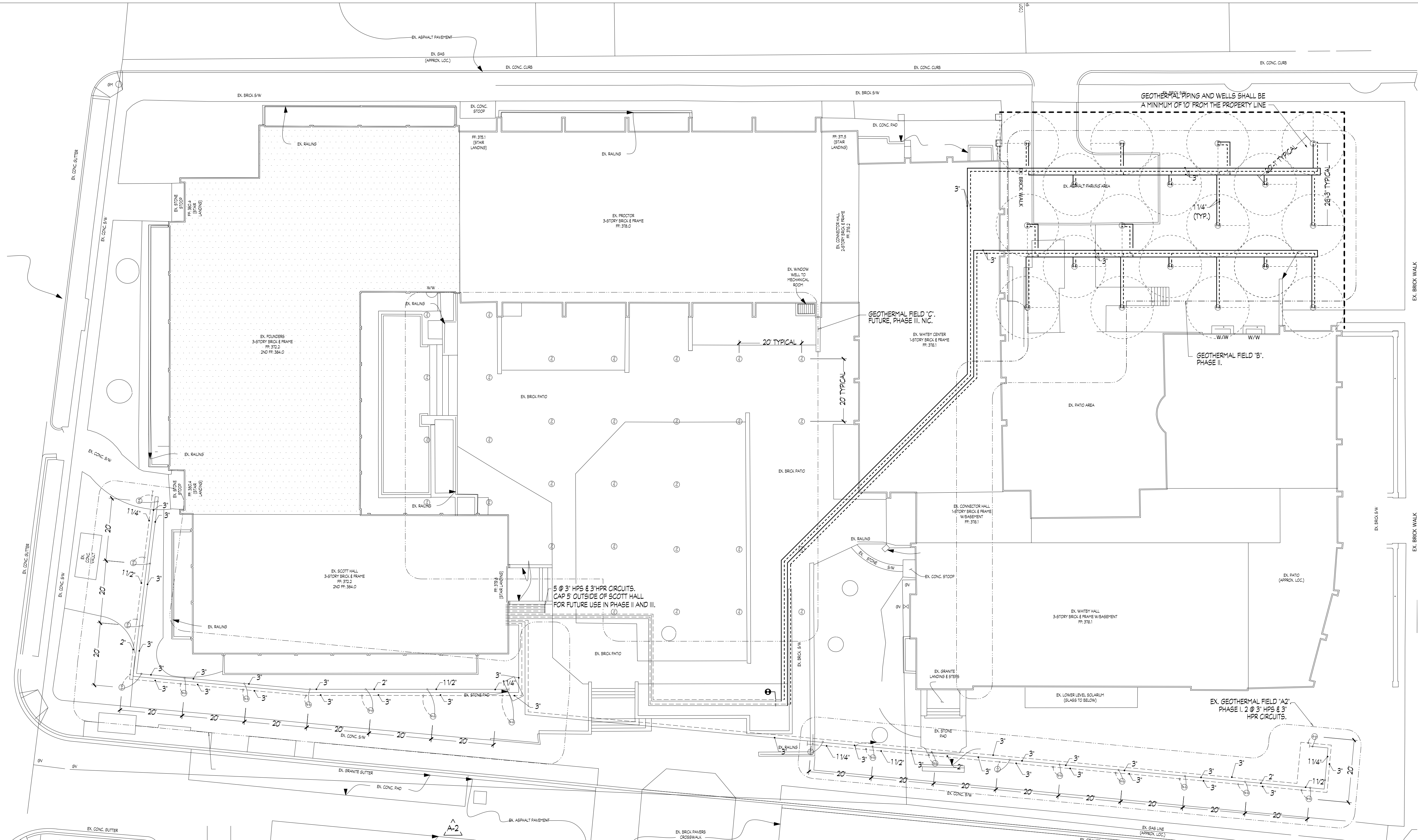
ARCHITECT  
HARTMAN-COX ARCHITECTS  
1074 THOMAS JEFFERSON ST. NW  
WASHINGTON, DC 20007  
202.333.6446

DRAWING TITLE  
**SITE PLAN  
-MECHANICAL-**

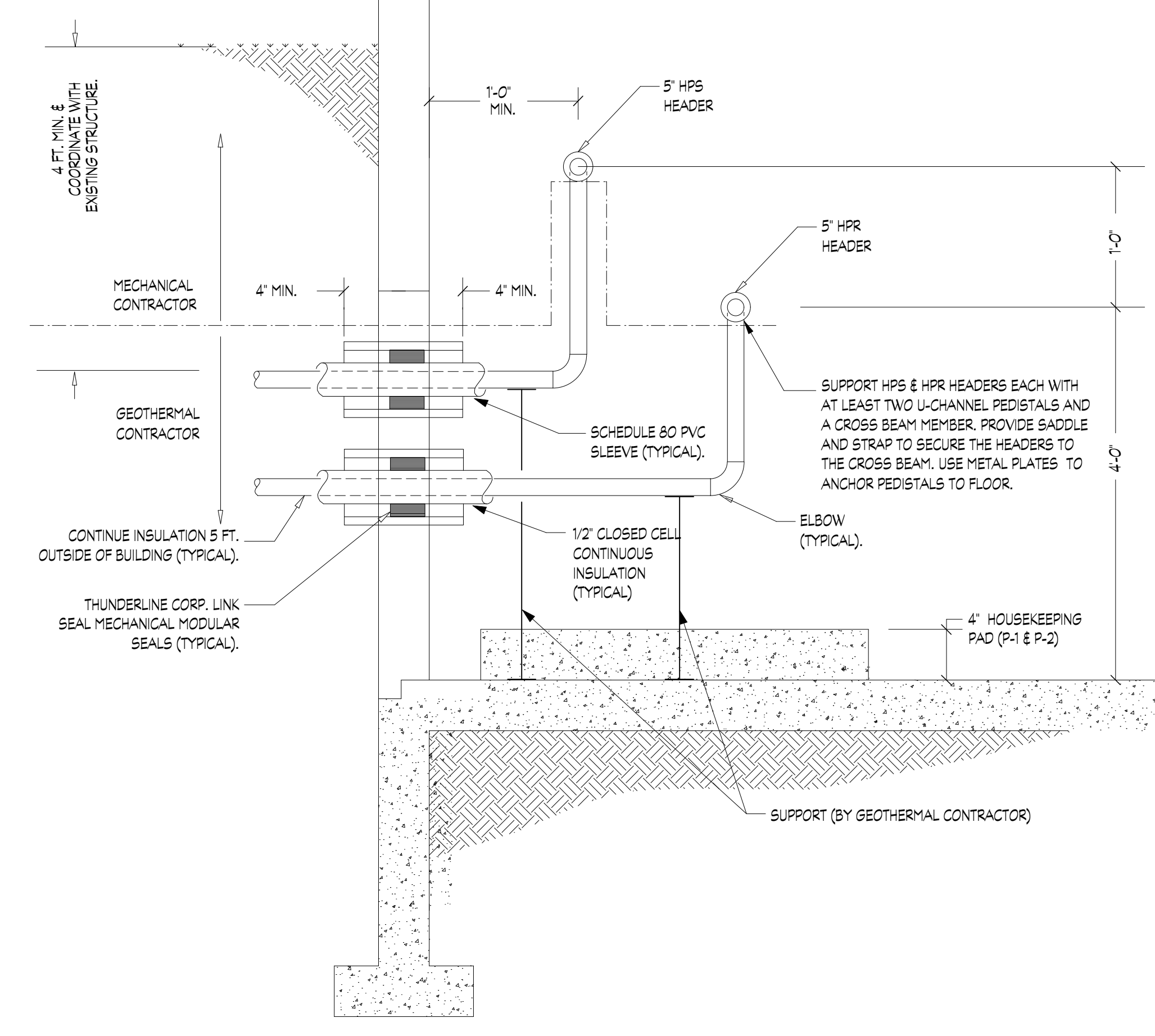
DATE  
FEBRUARY 14, 2011

SCALE  
1/8"=1'-0"

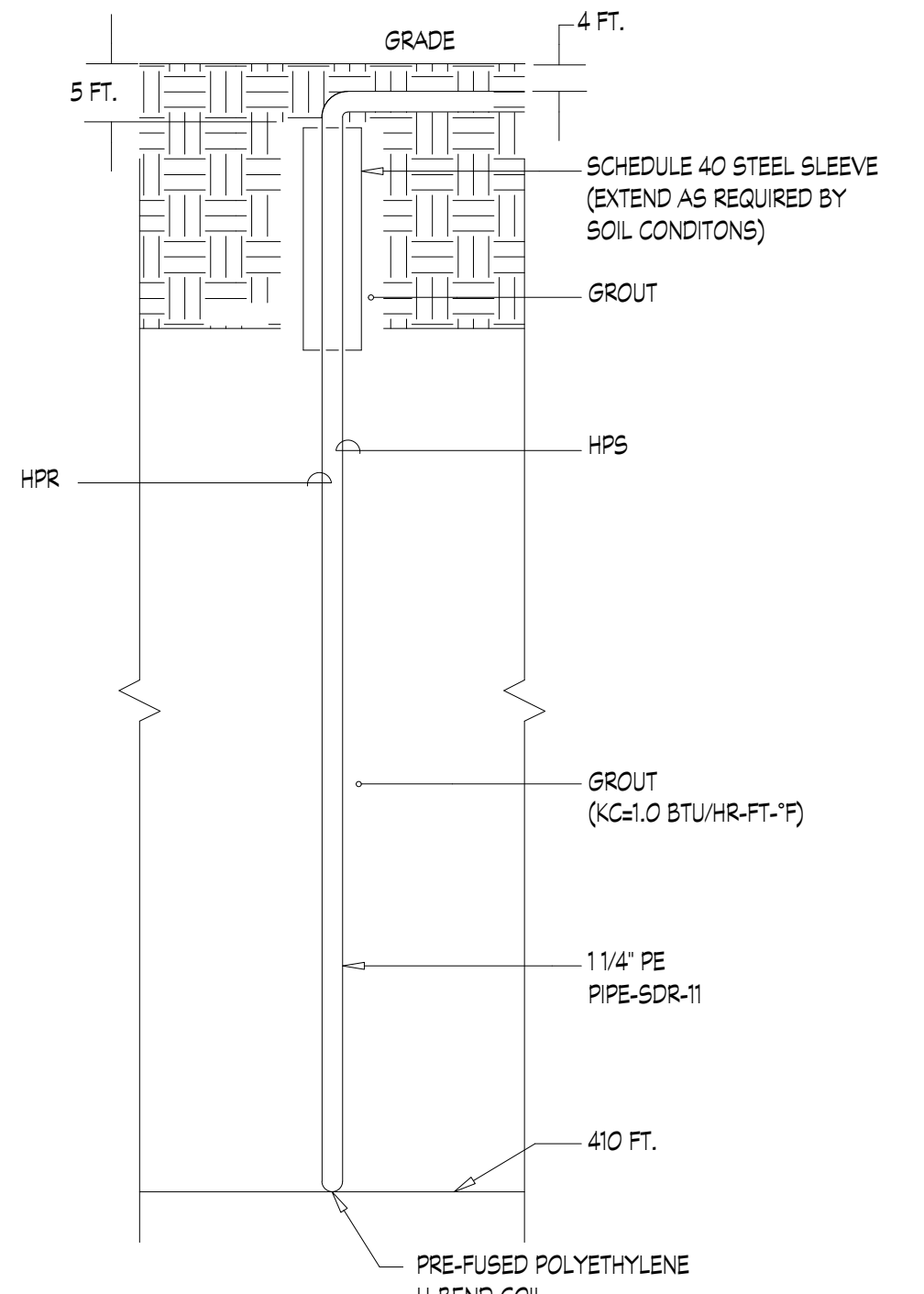
**M1.00**  
PHASE 2



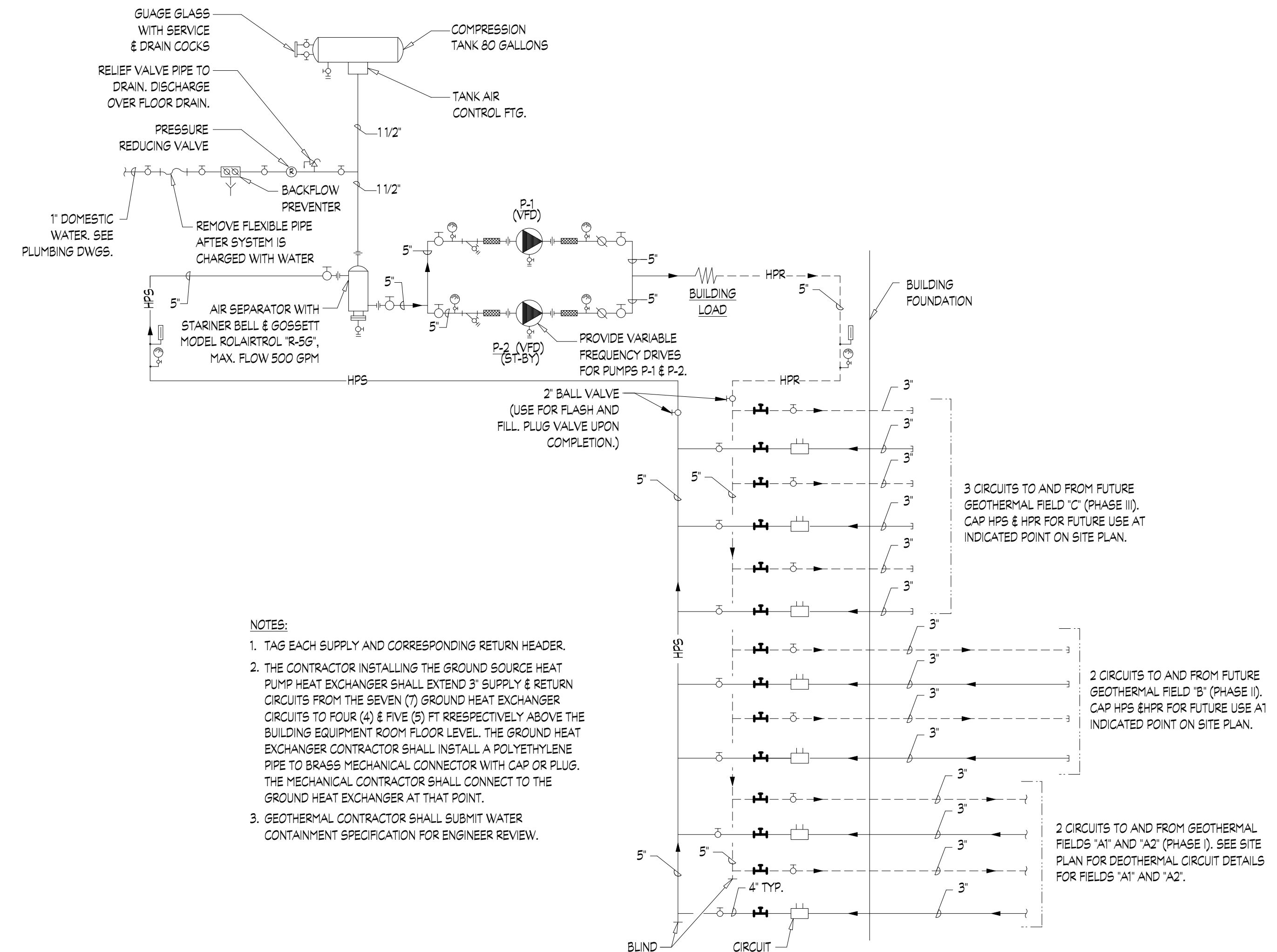
1 SITE PLAN - PHASE I  
SCALE: 1/16" = 1'-0"



3 DETAILS OF HPS & HPR BUILDING STUBOUT  
NOT TO SCALE

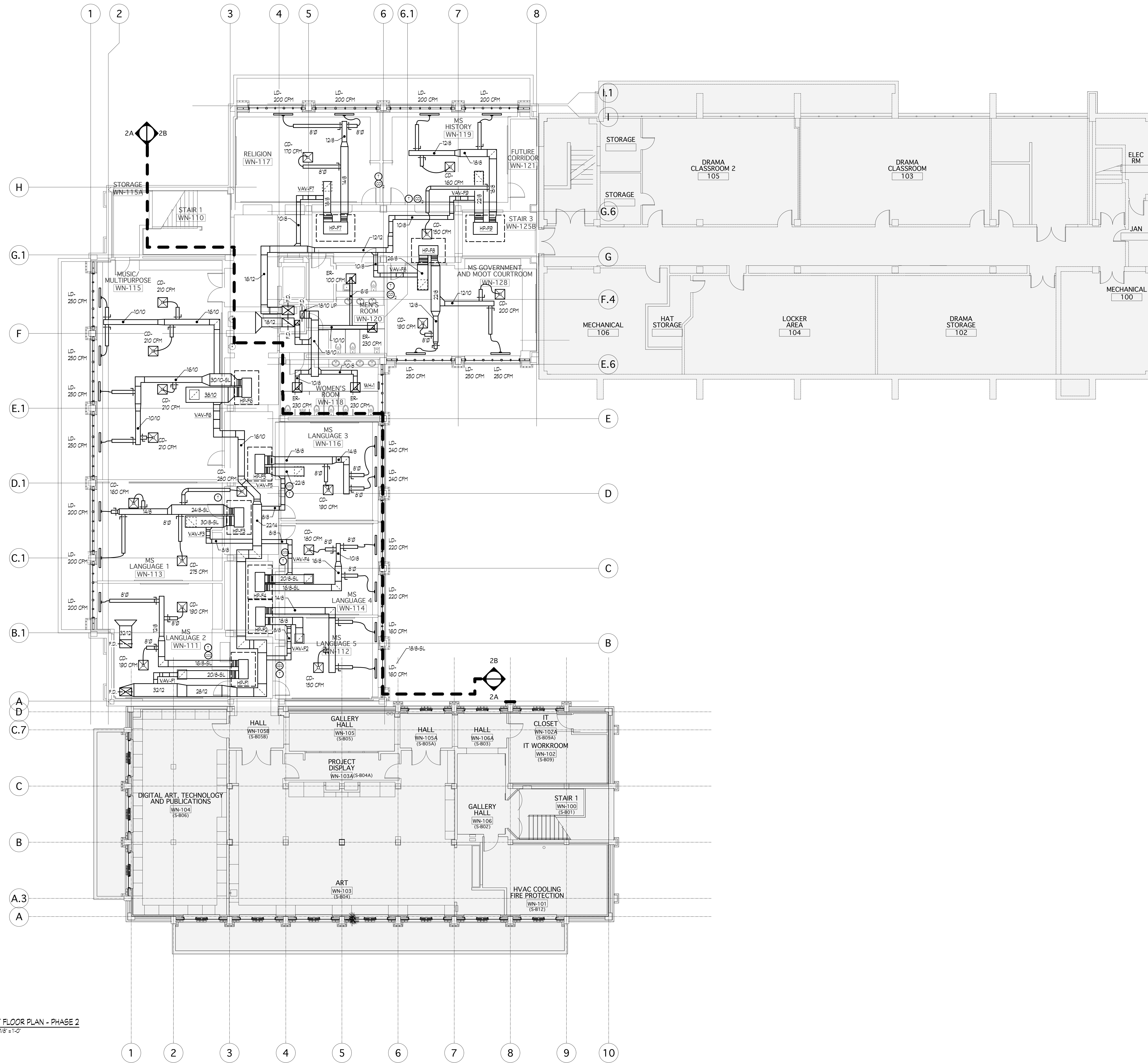


4 TYPICAL BORE HOLE DETAIL  
NOT TO SCALE



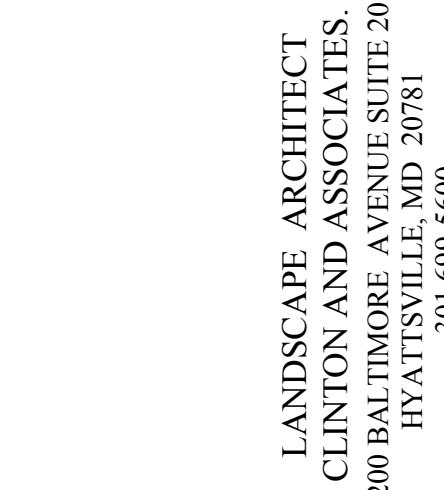
- NOTES:
1. TAG EACH SUPPLY AND CORRESPONDING RETURN HEADER.
  2. THE CONTRACTOR INSTALLING THE GROUND SOURCE HEAT PUMP HEAT EXCHANGER SHALL EXTEND 3' SUPPLY & RETURN CIRCUITS FROM THE SEVEN (7) GROUND HEAT EXCHANGER CIRCUITS TO FOUR (4) & FIVE (5) FT. RESPECTIVELY ABOVE THE BUILDING EQUIPMENT ROOM FLOOR LEVEL. THE GROUND HEAT EXCHANGER CONTRACTOR SHALL INSTALL A POLYETHYLENE PIPE TO BRASS MECHANICAL CONNECTOR WITH CAP OR PLUG. THE MECHANICAL CONTRACTOR SHALL CONNECT TO THE GROUND HEAT EXCHANGER AT THAT POINT.
  3. GEOTHERMAL CONTRACTOR SHALL SUBMIT WATER CONTAINMENT SPECIFICATION FOR ENGINEER REVIEW.

5 DIAGRAM OF EARTH COUPLED HEAT PUMP PIPING SYSTEM  
NOT TO SCALE



1 FIRST FLOOR PLAN - PHASE 2  
SCALE: 1/8" = 1'-0"

SUBMISSION	
02.14.11	PERMIT SUBMISSION



LANDSCAPE ARCHITECT  
CLINTON AND ASSOCIATES  
5200 BALTIMORE AVENUE, SUITE 201  
HYATTSVILLE, MD 20781  
301.699.5600

WOODLEY NORTH  
NATIONAL CATHEDRAL SCHOOL FOR GIRLS  
MOUNT ST. ALBAN, WASHINGTON, D.C.

M.E.P. ENGINEERS  
ALLEN & SHARFF ENGINEERING  
7061 DEEPAGE DRIVE, SUITE 200  
COLUMBIA, MD 21045  
410.381.7100

STRUCTURAL ENGINEERS  
THORNTON TOMASETTI GROUP  
2000 L STREET, N.W., SUITE 840  
WASHINGTON, DC 20036  
202.332.8222

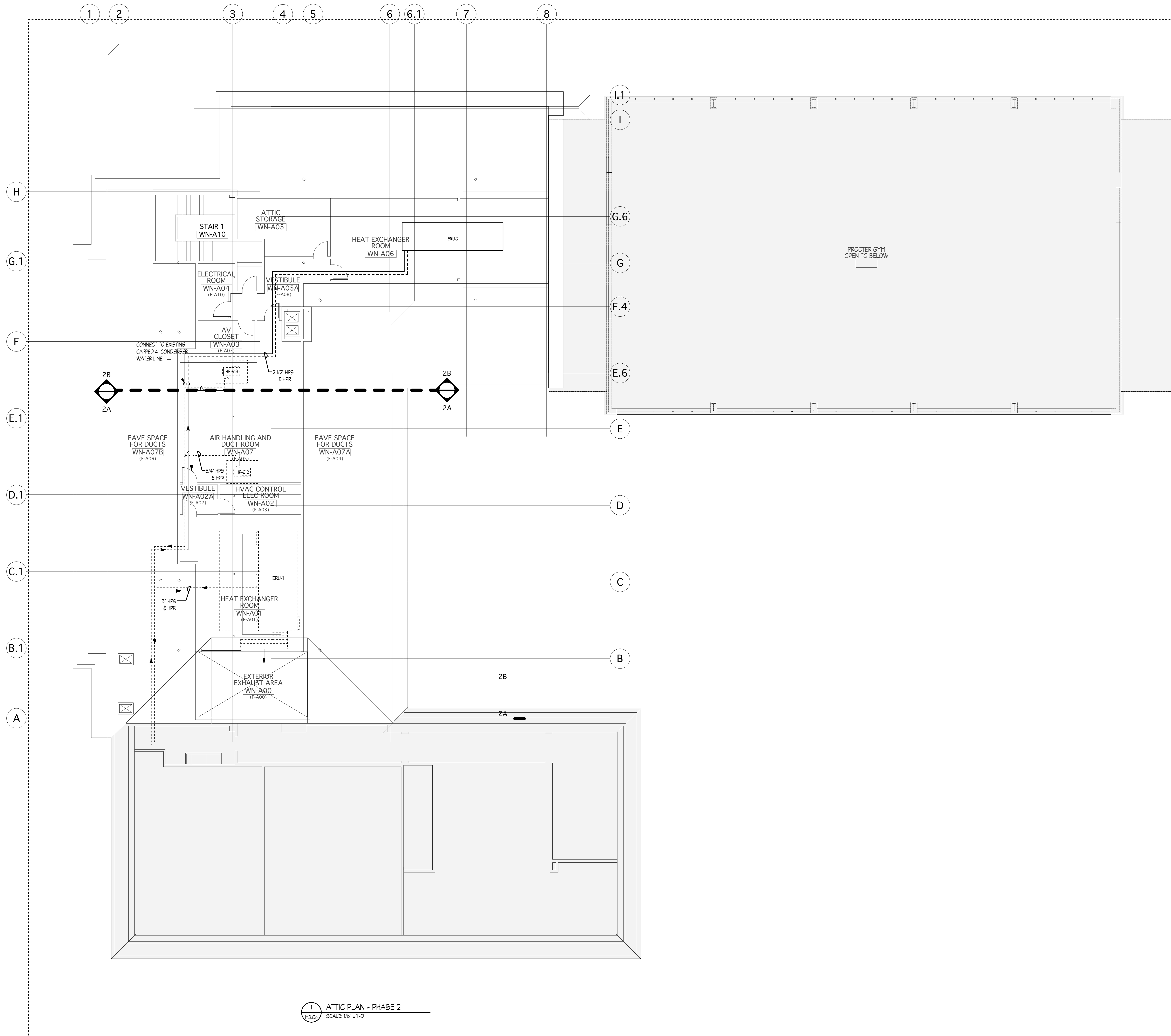
ARCHITECT  
HARTMAN-COX ARCHITECTS  
1074 THOMAS JEFFERSON ST., NW  
WASHINGTON, DC 20007  
202.333.6446

DRAWING TITLE  
FIRST FLOOR PLAN  
-MECHANICAL

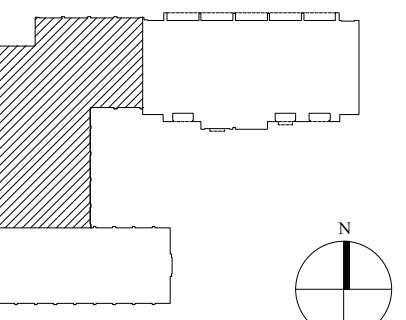
SCALE 1/8" = 1'-0"

DATE  
FEBRUARY 14, 2011

M2.01  
PHASE 2



1 ATTIC PLAN - PHASE 2  
MS-CL SCALE: 1/8" = 1'-0"



LANDSCAPE ARCHITECT  
CLINTON AND ASSOCIATES  
5200 BALTIMORE AVENUE SUITE 201  
HYATTSVILLE, MD 20781  
301.699.5600

**WOODLEY NORTH**  
NATIONAL CATHEDRAL SCHOOL FOR GIRLS  
MOUNT ST., ALBAN, WASHINGTON, D.C.

M.E.P. ENGINEERS  
ALLEN & SHARIF ENGINEERING  
7061 DEEPAE DRIVE SUITE 200  
COLUMBIA, MD 21045  
410.381.7100

STRUCTURAL ENGINEERS  
THORNTON TOMASETTI GROUP  
2000 L STREET, NW, SUITE 840  
WASHINGTON, DC 20036  
202.822.8222

ARCHITECT  
HARTMAN-COX ARCHITECTS  
1074 THOMAS JEFFERSON ST. NW  
WASHINGTON, DC 20007  
202.333.6446

DRAWING TITLE  
**ATTIC PLAN  
- MECHANICAL PIPING**

SCALE 1/8" = 1'-0"  
DATE FEBRUARY 14, 2011

**M3.04**  
PHASE 2