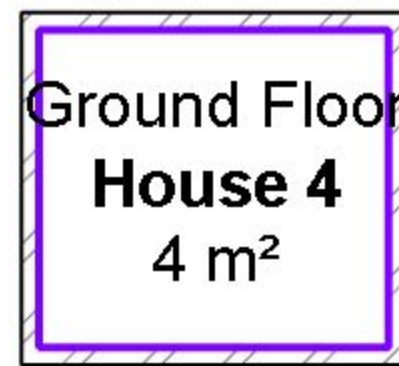
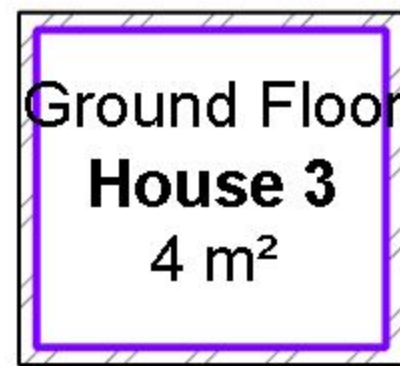
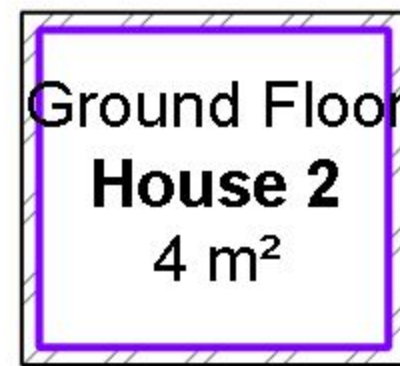
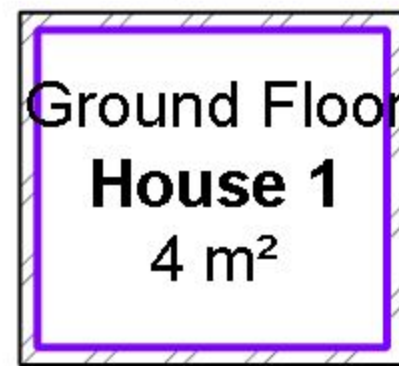


Create your 2Hrs Parameter. I've used areas, but I know some people use rooms at DA stage. It doesn't matter for this workflow. It will work for any element.



Schedule Properties

Fields | Filter | Sorting/Grouping | Formatting | Appearance

Available fields:

Area
Area Type
Comments
Count
IfcGUID
Image
Level
Perimeter

Add -->

<-- Remove

Add Parameter...

Calculated Value...

Scheduled fields (in order):

Name
Number
2Hrs

Create a schedule
and add your 2Hrs
parameter.

Edit...

Delete

Select available fields from:

Areas

Edit...

Delete

Move Up

Move Down

☐ Include elements in links

OK

Cancel

Help

Schedule Properties

Fields | Filter | Sorting/Grouping | Formatting | Appearance

Available fields:

Area
Area Type
Comments
Count
IfcGUID
Image
Level
Perimeter

Add -->

<-- Remove

Add Parameter...

Calculated Value...

Scheduled fields (in order):

Name
Number
2Hrs

New calculated value. It's a workaround to have a total number of elements

Calculated Value

Name: No1

☒ Formula

☐ Percentage

Discipline: Common

Type: Number

Formula: 1

OK

Cancel

Help

Edit...

Delete

Select available fields from:

Areas

Edit...

Delete

Move Up

Move Down

☐ Include elements in links

OK

Cancel

Help

Schedule Properties

Fields | Filter | Sorting/Grouping | Formatting | Appearance

Available fields:

Area
Area Type
Comments
Count
IfcGUID
Image
Level
Perimeter

Add -->

<-- Remove

Add Parameter...

Calculated Value

Scheduled fields (in order):

Name
Number
2Hrs
No1

This calculated
value changes the
Yes/No parameter
to a 1/0 integer

Calculated Value

Name: Int2Hrs

☒ Formula☐ Percentage

Discipline: Common

Type: Number

Formula: if(2Hrs,1,0)

OK

Cancel

Help

Edit...

Delete

Select available fields from:

Areas

☐ Include elements in links

Edit...

Delete

Move Up

Move Down

OK

Cancel

Help

Schedule Properties [X]

Fields | Filter | Sorting/Grouping | Formatting | Appearance

Available fields:

- Area
- Area Type
- Comments
- Count
- IfcGUID
- Image
- Level
- Perimeter

Scheduled fields (in order):

- Name
- Number
- 2Hrs
- No1
- Int2Hrs

Buttons: Add --> <-- Remove Add Parameter... Calculated Value...

Buttons: Edit... Delete

Select available fields from: Areas

☐ Include elements in links

Buttons: OK Cancel Help

Optionally you can have a text value driven by an if statement.

Calculated Value [X]

Name: Compliance

☒ Formula ☐ Percentage

Discipline: Common

Type: Text

Formula: if(2Hrs,"Compliant","Non-compliant")

Buttons: OK Cancel Help

Untitled - Notepad [X]

File Edit Format View Help

```
if(2Hrs,"Compliant","Non-compliant")|
```

F	G
Compliance	Percentage of 2Hrs
Non-compliant	25%
	25%
Compliant	25%
Compliant	25%
Compliant	25%
	75%
	100%

Schedule Properties

Fields | Filter | Sorting/Grouping | Formatting | Appearance

Available fields:

- Area
- Area Type
- Comments
- Count
- IfcGUID
- Image
- Level
- Perimeter

Scheduled fields (in order):

- Name
- Number
- 2Hrs
- No1
- Int2Hrs
- Compliance

Buttons: Add -->, <-- Remove, Add Parameter..., Calculated Value...

Percentage of 2Hrs is actually a percentage of the No1 value. By sorting it by 2Hrs you'll get your percentage

Buttons: Edit..., Delete, Move Up, Move Down

Select available fields from: Areas

☐ Include elements in links

Buttons: OK, Cancel, Help

Calculated Value

Name: Percentage of 2Hrs

☐ Formula ☒ Percentage

Of: No1

By: <Grand total>

Buttons: OK, Cancel, Help

Schedule Properties

Fields Filter Sorting/Grouping Formatting Appearance

Sort by: 2Hrs ☒ Ascending ☐ Descending

☐ Header ☒ Footer: Title, count, and totals ☐ Blank line

Then by: (none) ☒ Ascending ☐ Descending

☐ Header ☐ Footer: ☐ Blank line

Then by: (none) ☒ Ascending ☐ Descending

☐ Header ☐ Footer: ☐ Blank line

Then by: (none) ☒ Ascending ☐ Descending

☐ Header ☐ Footer: ☐ Blank line

☒ Grand totals: Title, count, and totals

Custom grand total title:

Grand total

☐ Itemize every instance

Sorting by 2Hrs

Totals

Totals

Optionally you can
deselect this

OK

Cancel

Help

Schedule Properties



Fields | Filter | Sorting/Grouping | **Formatting** | Appearance

Fields:

Name
Number
2Hrs
No 1
Int2Hrs
Compliance
Percentage of 2Hrs

Heading:

Heading orientation:

Horizontal

Alignment:

Left

Field formatting:

Field Format...

☐ Hidden field

Conditional Format...

☒ Show conditional format on sheets

☒ Calculate totals

Calculate totals for
the new values

OK

Cancel

Help



<Area Schedule (Rentable)>

A	B	C	D	E	F	G
Name	Number	No1	2Hrs	Int2Hrs	Compliance	Percentage of 2Hr
House 2	3	1	<input type="checkbox"/>	0	Non-compliant	25%
No: 1		1		0		25%
		3	<input checked="" type="checkbox"/>	3	Compliant	75%
Yes: 3		3		3		75%
Grand total: 4		4		3		100%

You can hide these

<SEPP65 2Hrs>

A	B
Compliance	Percentage of 2Hr
Non-compliant	25%
No: 1	25%
Compliant	75%
Yes: 3	75%
Total of 2Hrs: 4	100%

Et Voila !
DONE!