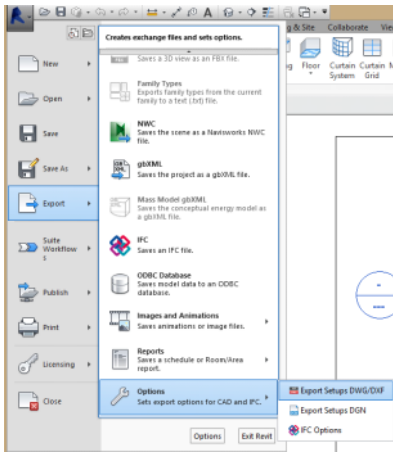


EXPORT TO .dwg SETUP

1 - Navigate to the Export Settings Menu

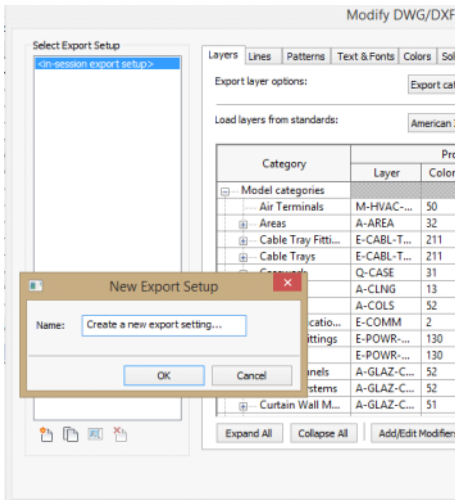


2 - Screenshot or document which category items you need to modify/ create

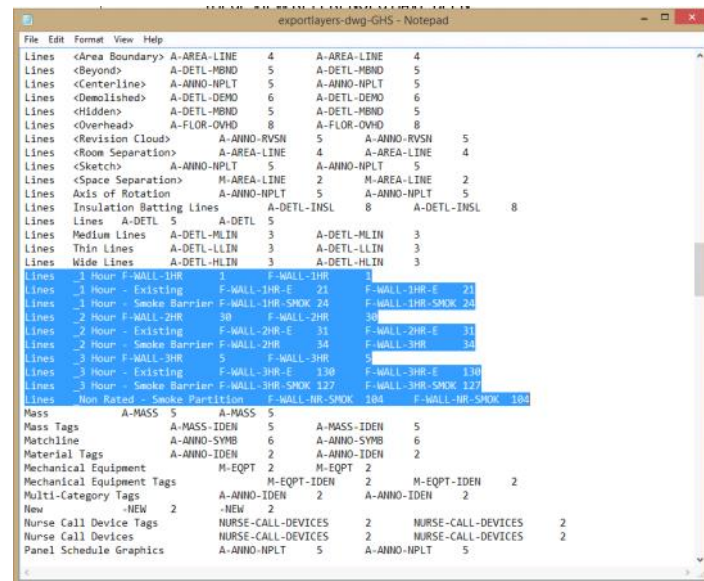
Load layers from standards: American Institute of Architects Standard (AIA)

Category	Projection		Layer modifiers	Cut	
	Layer	Color ID		Layer	Color ID
Generic Models	A-GENM	13	A-GENM	13	
1 Hour	(A-GENM)	13	Add/Edit...	(A-GENM)	Add/...
2 Hour	(A-GENM)	13		(A-GENM)	
3 Hour	(A-GENM)	13		(A-GENM)	
4 Hour	(A-GENM)	13		(A-GENM)	
Car Exterior	(A-GENM)	13		(A-GENM)	
Door Projection	(A-GENM)	13		(A-GENM)	
Egress Continuous	(A-GENM)	13		(A-GENM)	
Egress Hidden	(A-GENM)	13		(A-GENM)	
Egress Lines	(A-GENM)	13		(A-GENM)	
Glass - Mirror	(A-GENM)	13		(A-GENM)	
Hidden Lines	A-GENM...	13		A-GENM...	
Life Safety	(A-GENM)	13		(A-GENM)	

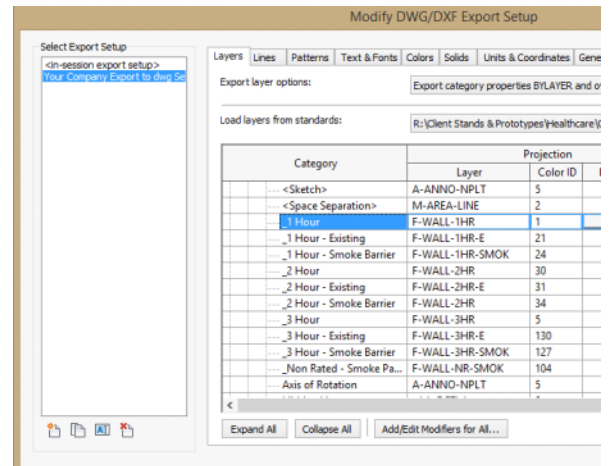
3 - Create your new .dwg export settings file and save it to your network



4 - Navigate to and open the export setting .txt file you just created. Add the required lines of text as required



5 - Save the modified .txt. In Revit reload it in the export settings dialog to verify the layers and color ID's are as desired



6 - Export a file to CAD to verify the export settings work as desired.