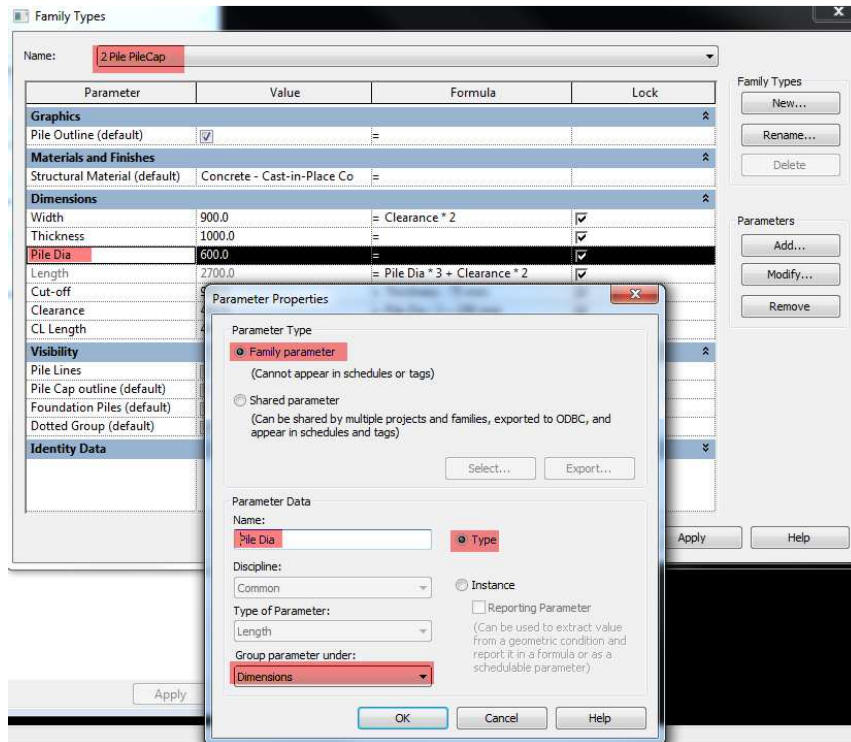


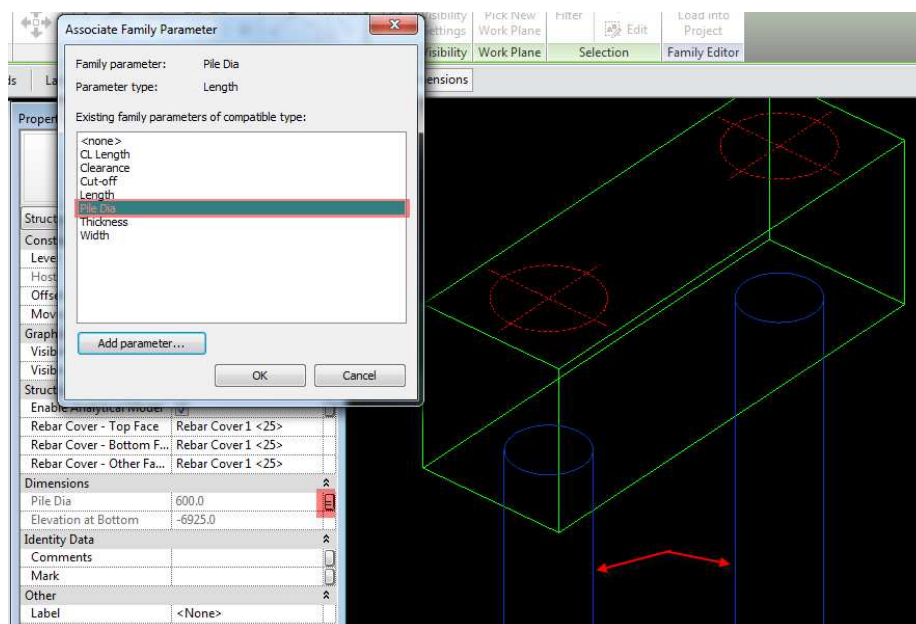
Hi Alfredo and thanx for the response, I knew I was close but I still can't get the nested pile to flex.

I have made the Pile family (1) shared and the Pile Cap family (2) is unshared.

In the Pile Cap family I have removed the shared parameter Pile Dia and replaced it with a Family Parameter (unshared)



If I now select the Piles (1) and associate these with the Pile Dia from above that's fine but then when I change/flex the pile diameter in the Pile Cap family (2) all the other parameters alter to suit but the pile diameter does not change. Not quit sure what I've done wrong or not done. Any thoughts.



I have loaded both the families into a project and changing the Pile Dia does not work for either.
Before I could change the pile diameter independently. Not sure 😊