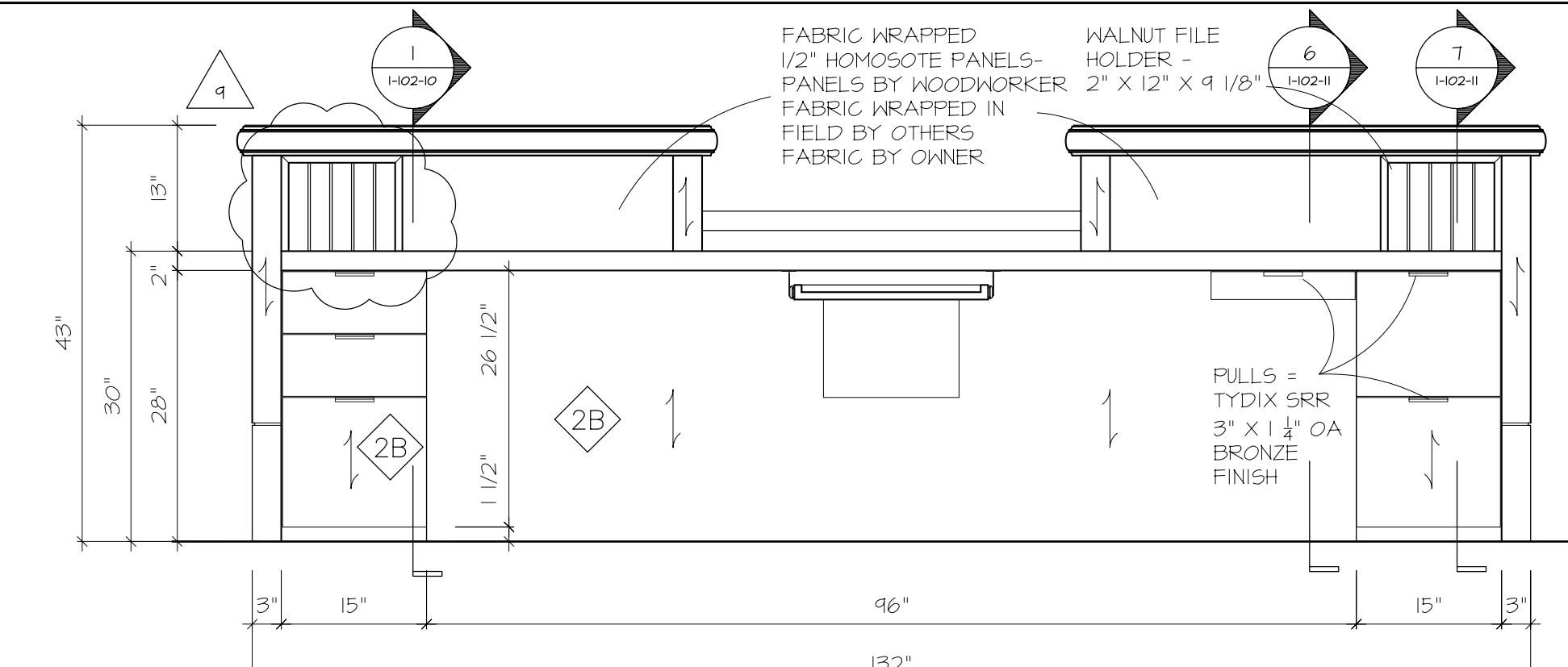


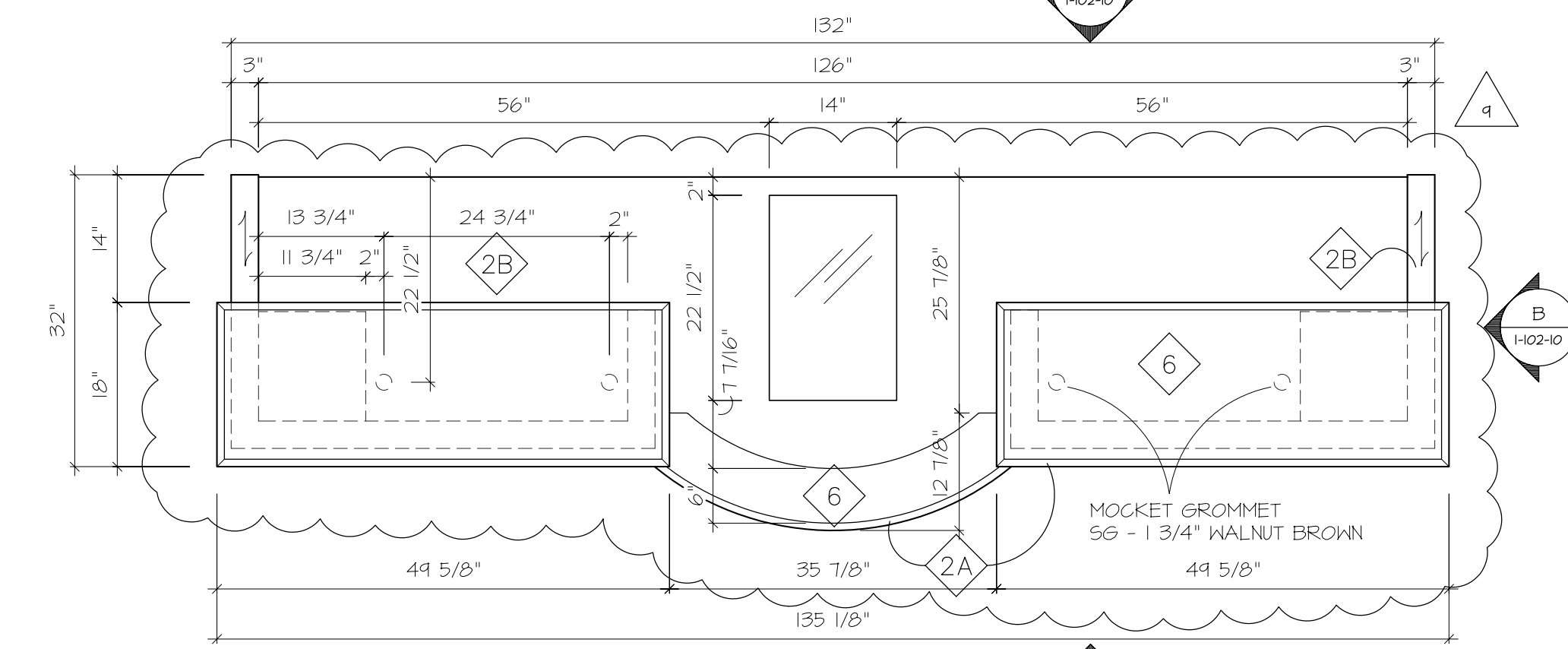
**A FRONT ELEVATION RECEPTION DESK**  
 H-102-10 3/4" = 12"  
 ref. 6/A-51.15

**B SIDE ELEVATION**  
 H-102-10 3/4" = 12"  
 ref. 6/A-51.15

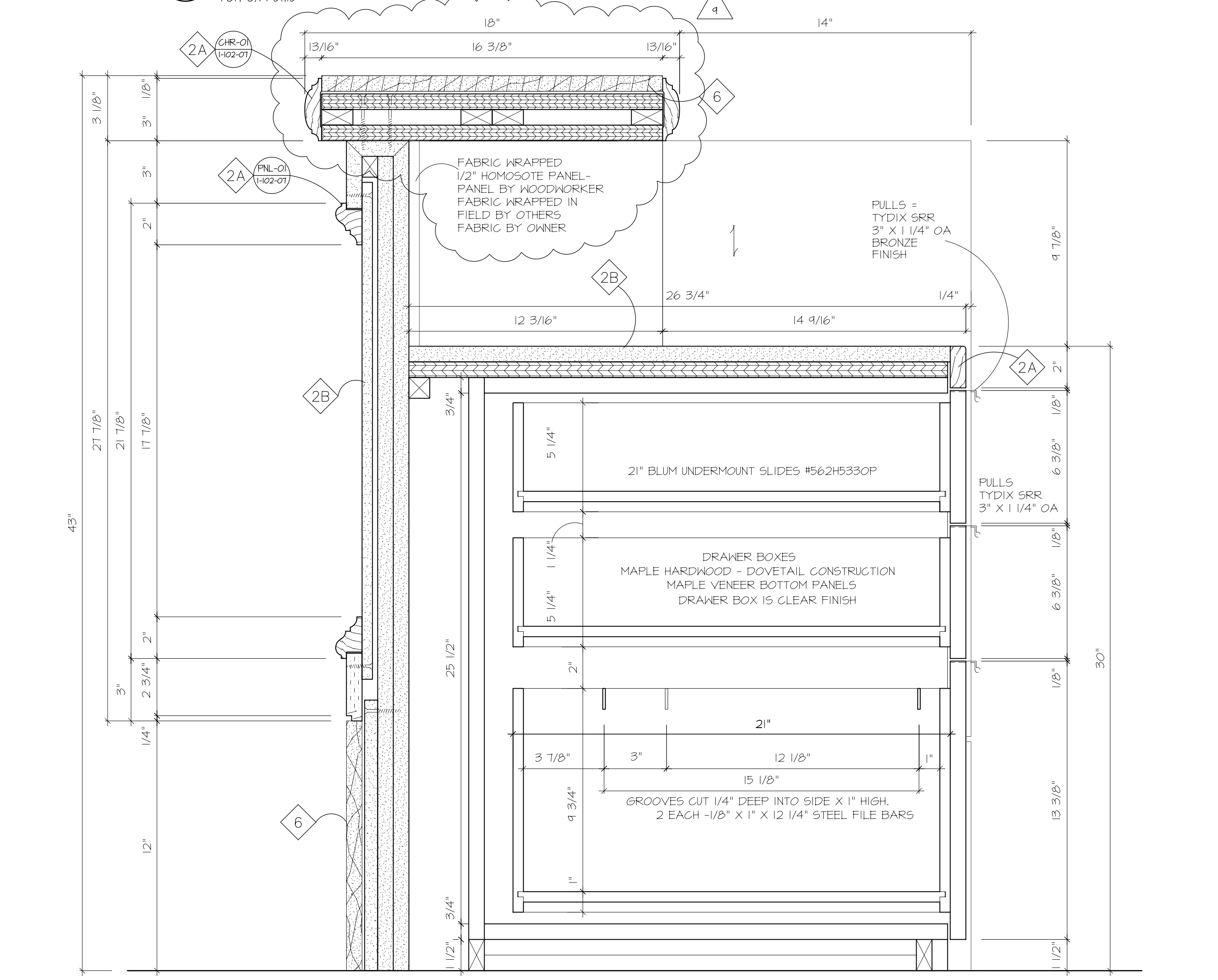


**C WORK AREA ELEVATION RECEPTION DESK**  
 H-102-10 3/4" = 12"  
 ref. 6/A-51.15

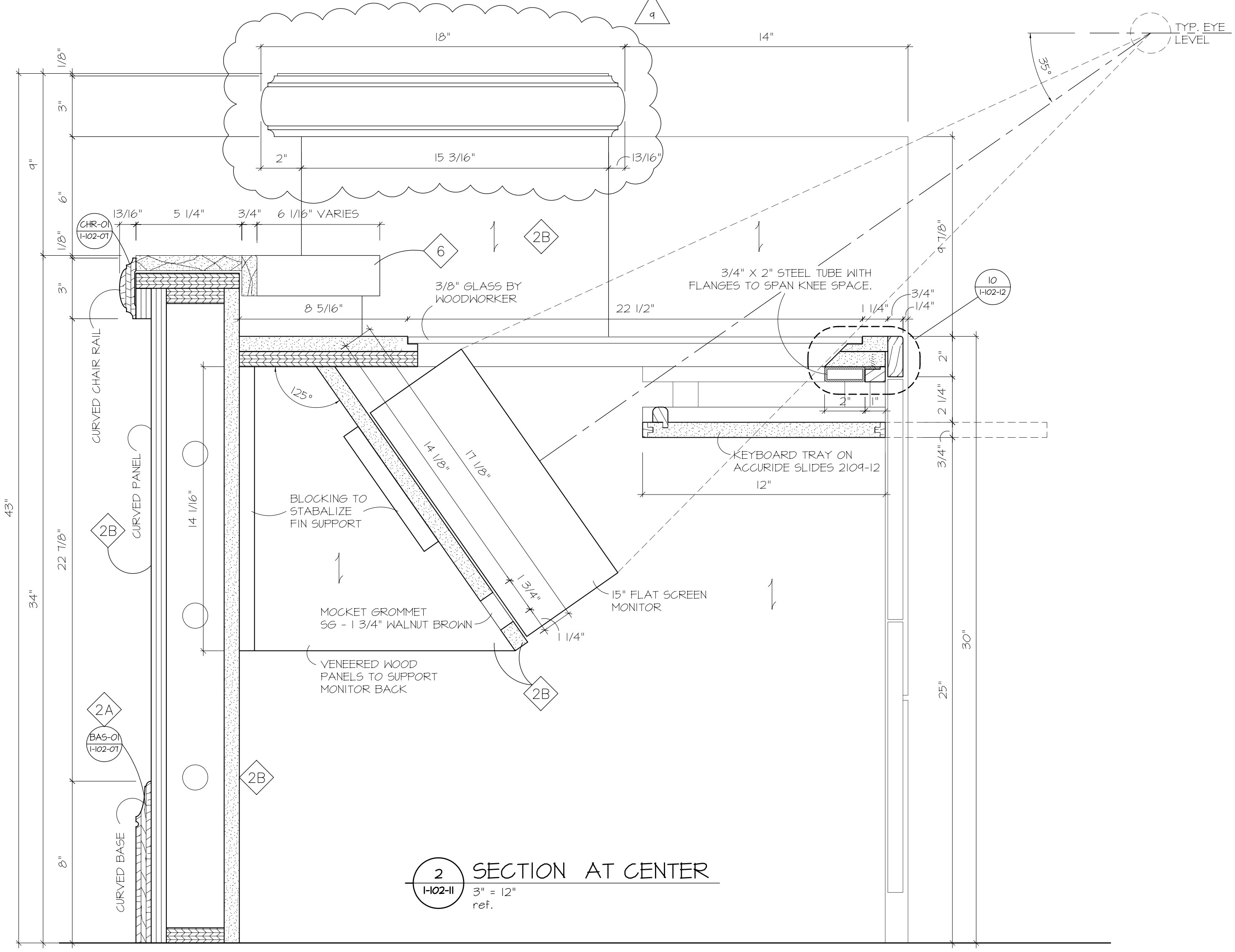
MATERIAL/FINISH NOTES	
SOLIDS:	<ul style="list-style-type: none"> <li>MAPLE - PRIME SAND PRIME</li> <li>WALNUT - STAINED</li> </ul>
PANELS:	<ul style="list-style-type: none"> <li>WALNUT VENEERED PARTICLE BOARD PANELS</li> <li>PAINTED GYPSUM BOARD</li> <li>ACOUSTIC FABRIC WRAPPED PANEL</li> <li>FABRIC WALL COVERING</li> <li>STONE</li> <li>STAMPED LEATHER PANEL</li> </ul>
MISC:	<ul style="list-style-type: none"> <li>MIRROR</li> <li>GLASS</li> <li>FRG BY OTHERS</li> </ul>



**D PLAN VIEW RECEPTION DESK**  
 H-102-10 3/4" = 12"  
 ref. 6/A-51.15



**1 SECTION BOX/ BOX/ FILE**  
 H-102-10 3/4" = 12"  
 ref. 6/A-51.15



**2 SECTION AT CENTER**  
 H-102-11 3/4" = 12"  
 ref.

**Project Solutions, LLC**

PROJECT SOLUTIONS LLC.  
 926 ELKTON DRIVE  
 COLORADO SPRINGS, CO 80907  
 Phone 719-955-1600  
 Fax 719-955-1606

**THE PACIFIC CLUB**  
 JOB # 0525

ARCHITECT:  
**MVE & PARTNERS, INC**  
 1900 MAIN STREET, 8TH FLOOR  
 IRVINE, CA 92614  
 Phone 949-809-3388  
 Fax 949-809-3399  
 CONTRACTOR:  
**SNYDER LANGSTON**  
 17963 COWAN  
 IRVINE, CA 92614  
 Phone 949-225-3251  
 Fax 949-863-1087

**RELEASED FOR CONSTRUCTION**  
 MAR 08 2006

ORIGINAL DATE	12/21/05
REVISIONS	
REMARKS BY TB H-102-2006 EASTLAKE	
1 PER ARCHITECTURAL REDLINES JAN 31 2006 TURNER	
2 PER ARCH REDLINES MAR 08 2006 JASON	
3 PER ARCH REDLINES MAR 21 2006 TURNER	
5 PER WAREHOUSE / FRAME CLARIFICATION APR 26 2006 TURNER	
4 RECEPTION DESK CORRECTIONS MAY 23 2006 TURNER	

DRAWN BY  
 EASTLAKE

TITLE  
 ELEVATIONS  
 I-102  
 RECEPTION DESK

AREA  
 1ST FLOOR

SHEET NO.  
 I-102-10