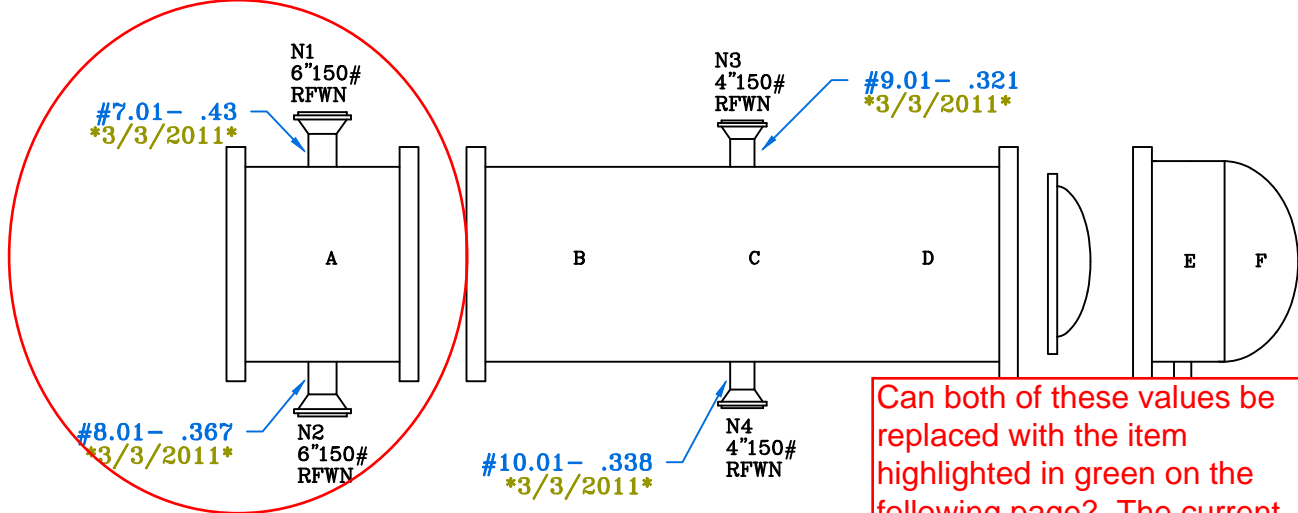


A  
 T #1.01- .297  
 \*3/3/2011\*  
 N #1.02- .323  
 \*3/3/2011\*  
 B #1.03- .341  
 \*3/3/2011\*  
 S #1.04- .271  
 \*3/3/2011\*

B  
 T #2.01- .369  
 \*3/3/2011\*  
 N #2.02- .368  
 \*3/3/2011\*  
 B #2.03- .368  
 \*3/3/2011\*  
 S #2.04- .366  
 \*3/3/2011\*

C  
 T #3.01- .377  
 \*3/3/2011\*  
 N #3.02- .378  
 \*3/3/2011\*  
 B #3.03- .382  
 \*3/3/2011\*  
 S #3.04- .382  
 \*3/3/2011\*



D  
 T #4.01- .422  
 \*3/3/2011\*  
 N #4.02- .38  
 \*3/3/2011\*  
 B #4.03- .409  
 \*3/3/2011\*  
 S #4.04- .418  
 \*3/3/2011\*

E  
 T #5.01- .459  
 \*3/3/2011\*  
 N #5.02- .464  
 \*3/3/2011\*  
 B #5.03- .46  
 \*3/3/2011\*  
 S #5.04- .469  
 \*3/3/2011\*

F  
 T #6.01- .492  
 \*3/3/2011\*  
 N #6.02- .488  
 \*3/3/2011\*  
 B #6.03- .498  
 \*3/3/2011\*  
 S #6.04- .484  
 \*3/3/2011\*  
 C #6.05- .49  
 \*3/3/2011\*

Can both of these values be replaced with the item highlighted in green on the following page? The current setup is misleading.

Circuit ID

TML Range

NOTE: CHANNEL REPLACED  
 IN 2011

DWG#: 92-E-1-SHELL-2.01-11.01  
 DESC: LEAN DEA TRIM COOLER

**Display/Update Drawing** [?] [X]

Unit: 92\_SRU-1    Eq/Circ ID: 92-E-1\_SHELL    Type: EXCH

Drawing ID: SRU1\_92-E-1    [List...]

Prototype: ATI HORIZ BLANK EXCH

From TML	From Location	To TML	To Location
2.01	B-SH-T	11.01	N5-.75"

Use Tenths As:  
 TML Inserts    [View TMLs...]  
 Multiple Readings / Loc.

Description: LEAN DEA TRIM COOLER

Drawing Markers:  
 CR Monitoring TML Marker: Short Markers  
 Local CR Marker: Short Markers  
 Valves Marker: Short Markers  
 [Edit Markers...]

[Display]    [Cancel]

## **PROCEDURE FOR CHANGING AUTOCAD LAYERS COLORS**

AutoCAD layer colors from UltraPIPE are specified in the "kbupdate.lsp" file located in the UltraPIPE Support folder.

UltraPIPE layers are created with the following color scheme by default:  
(Datapoint is the data layer, highlight is high, dpinfo is info, etc.)

HIGHLIGHT - 1  
TEXT - 3  
EXT - 6  
EXTINFO - 6  
PIPING - 7  
DATAPOINT - 4  
DPINFO - 4  
LDAR - 4  
LDINFO - 4  
VALVE - 4  
VAINFO - 4  
EQMRK - 6  
STRUCTURE - 1

The color numbers are AutoCADs color numbers. 1 is red, 3 is green, 4 is Cyan, etc. You can find all the color numbers under the layer settings of AutoCAD.

UltraPIPE assigns these colors in the makelayers function in the lsp file specified above.

### **To change the default color scheme:**

- 1) rename kbupdate.lsp and kbupdate.r2k to kbupdate.lsp.old and kbupdate.r2k.old
- 2) Copy kbupdate.lsp.old to kbupdate.lsp
- 3) Open kbupdate.lsp with Notepad and search for "defun makelayers".
- 4) If you scroll down, in quotes, you will see numbers followed by a layer name.
- 5) Change the numbers to the desired color for the UltraPIPE layer.
- 6) Replace all occurrences of "equipment""c""white" including quotes with "equipment""c""magenta" including quotes.
- 6) Save

7) Make a copy of kbupdate.lsp and name it kbupdate.r2k

Note, this will not change existing drawings, only new ones. There are other methods to change layer colors on existing drawings.